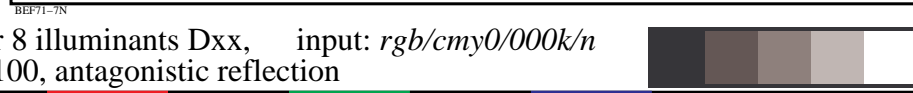
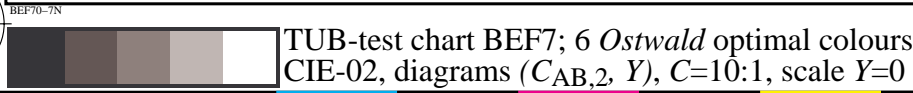
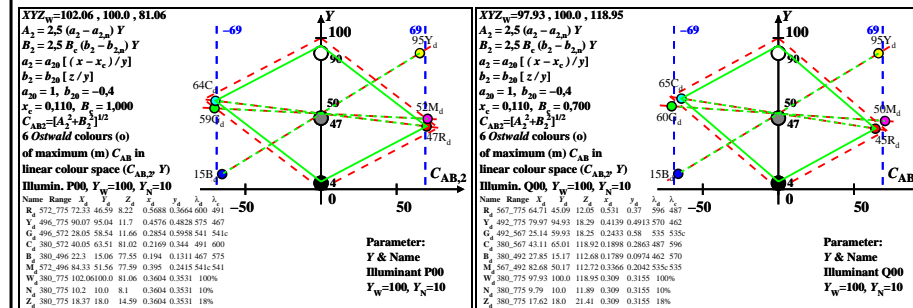
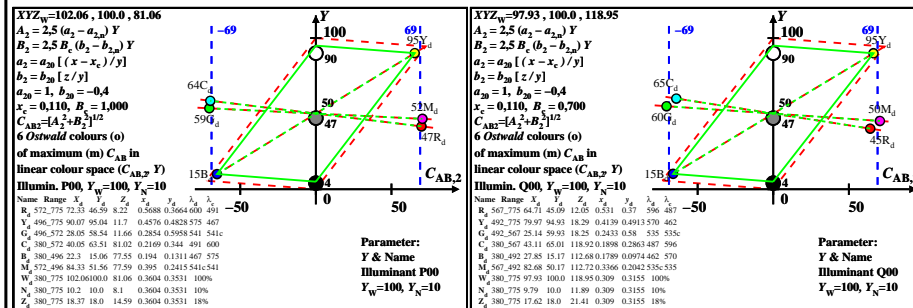
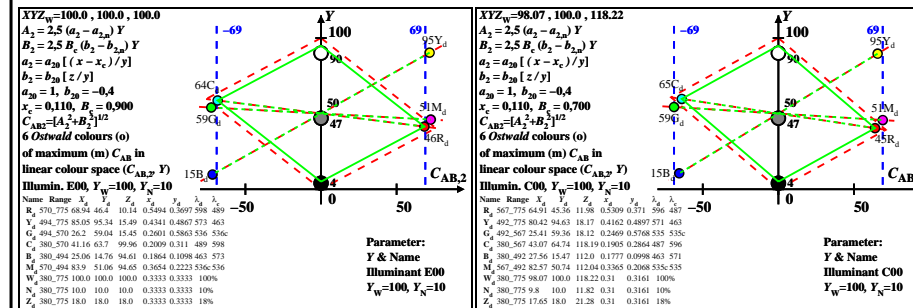
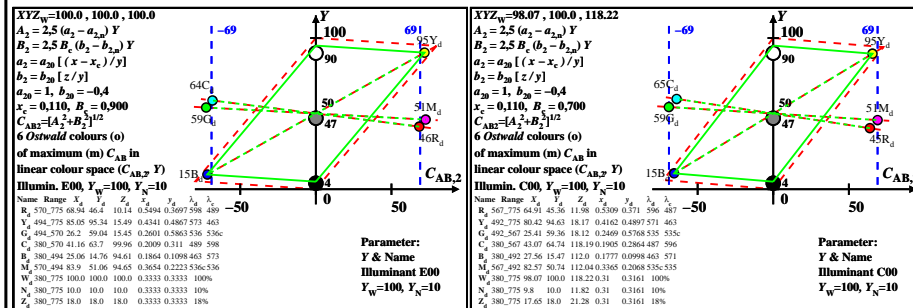
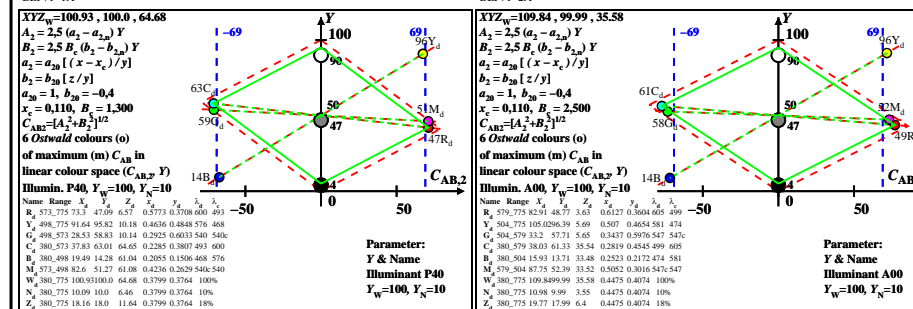
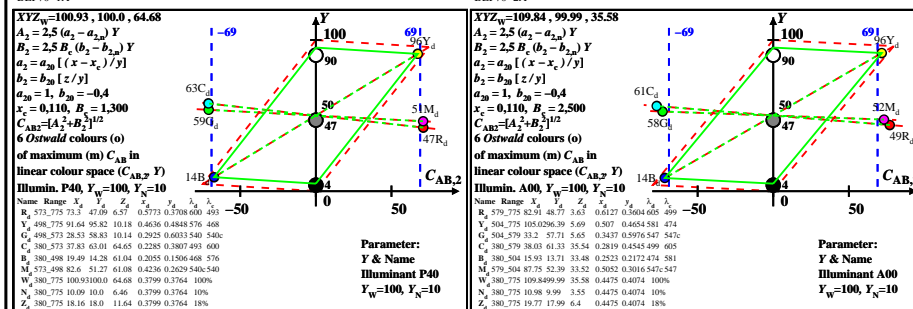
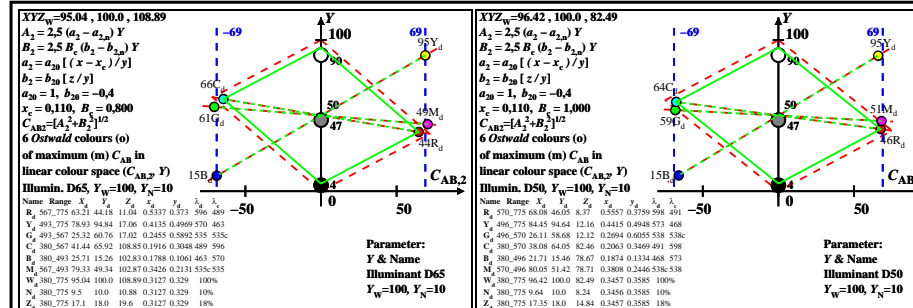
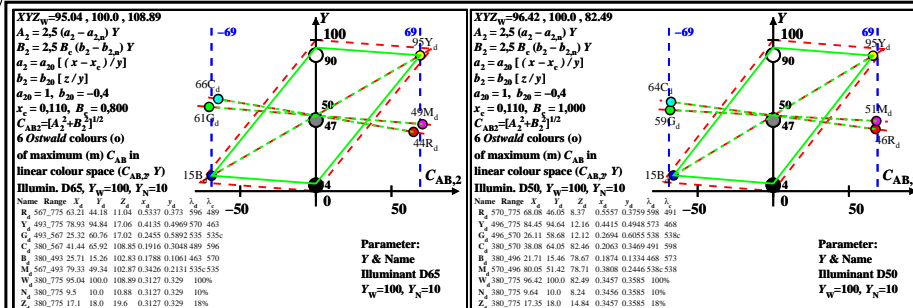


see similar files: http://farbe.li.tu-berlin.de/BEF7/BEF7.HTM technical information: http://farbe.li.tu-berlin.de or http://farbe.li.tu-berlin.de/

TUB registration: 20220301-BEF7/BEF7LONA.TXT /PS application for evaluation and measurement of display or print output TUB material: code=rha4ta



TUB-test chart BEF7; 6 Ostwald optimal colours for 8 illuminants Dxx, input: rgb/cmy0/000k/n CIE-02, diagrams ($C_{AB,2}, Y$), $C=10:1$, scale $Y=0$ to 100, antagonistic reflection