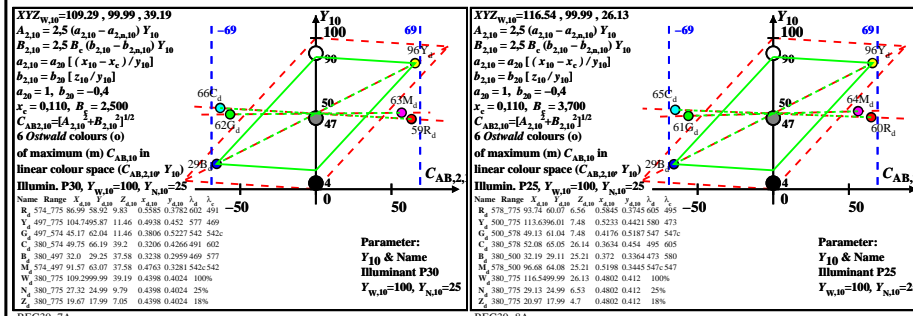
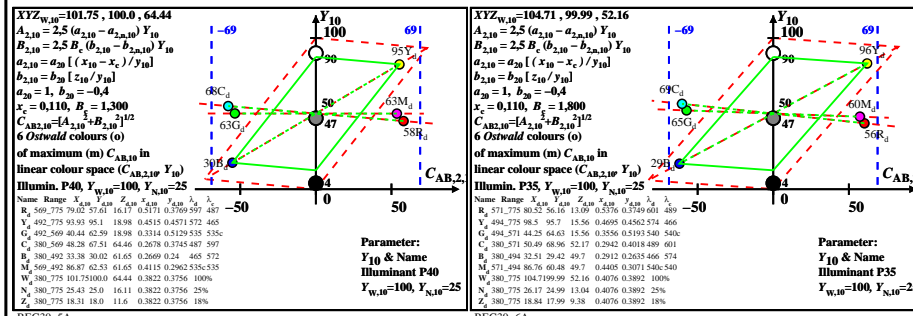
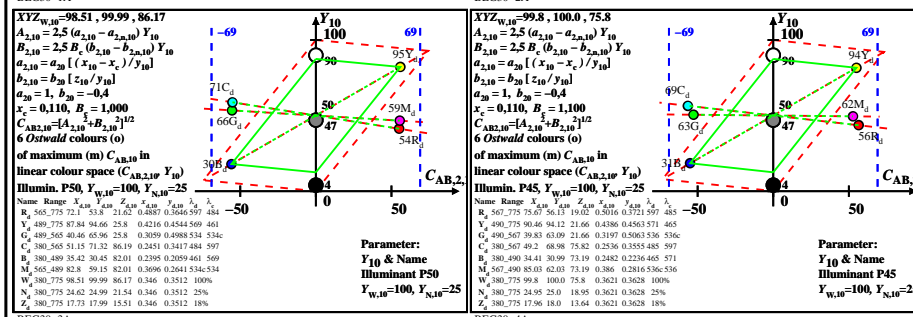
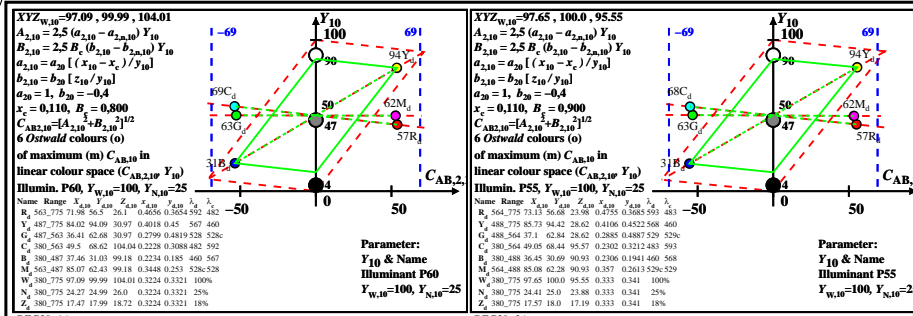
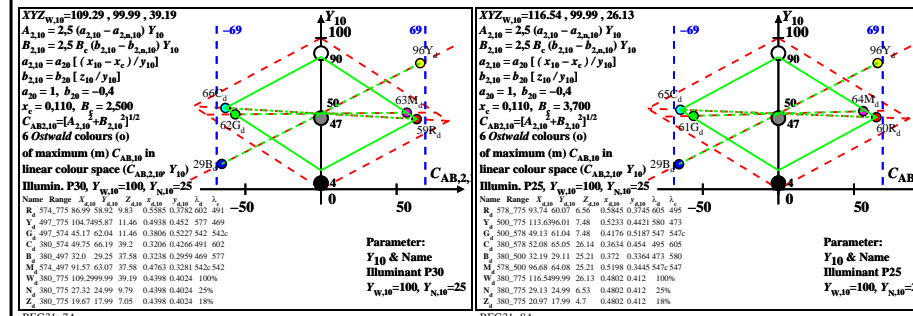
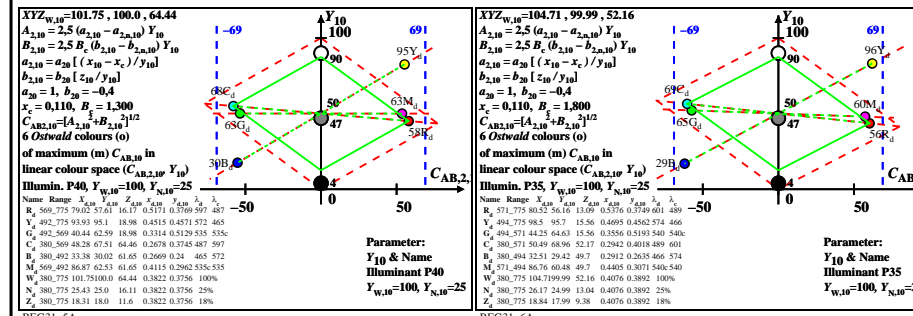
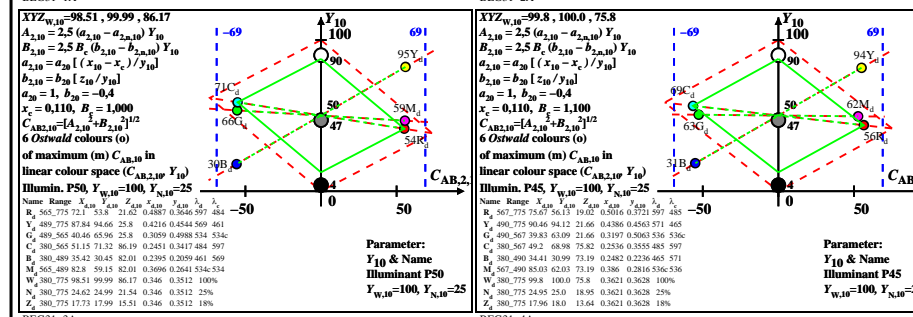
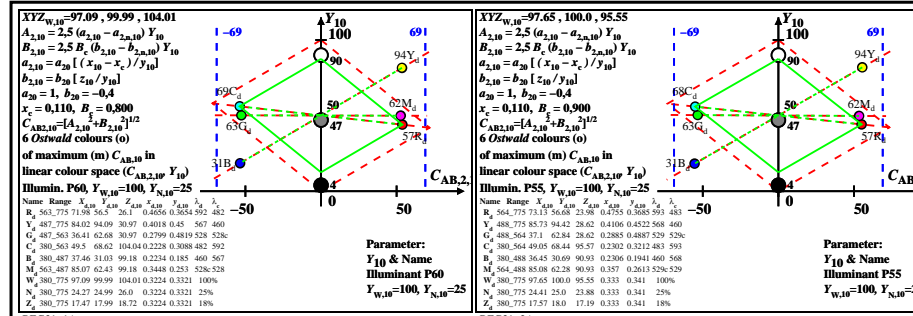


see similar files: http://farbe.li.tu-berlin.de/BEG3/BEG3.HTM
 technical information: http://farbe.li.tu-berlin.de/

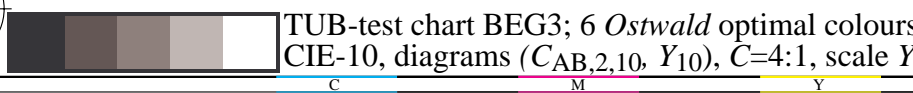
TUB registration: 20220301-BEG3/BEG3LONA.TXT /.PS
 application for evaluation and measurement of display or print output
 TUB material: code=rha4ta



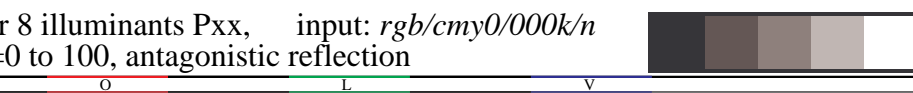
BEG30-1A, BEG30-2A, BEG30-3A, BEG30-4A



BEG31-1A, BEG31-2A, BEG31-3A, BEG31-4A



BEG30-5A



BEG31-5A

TUB-test chart BEG3; 6 Ostwald optimal colours for 8 illuminants Pxx, input: rgb/cmy0/000k/n CIE-10, diagrams (C_AB,2,10, Y10), C=4:1, scale Y10=0 to 100, antagonistic reflection