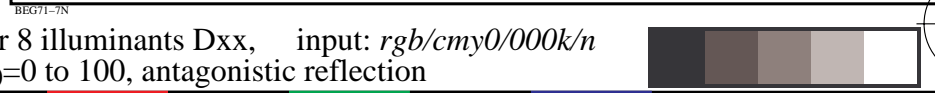
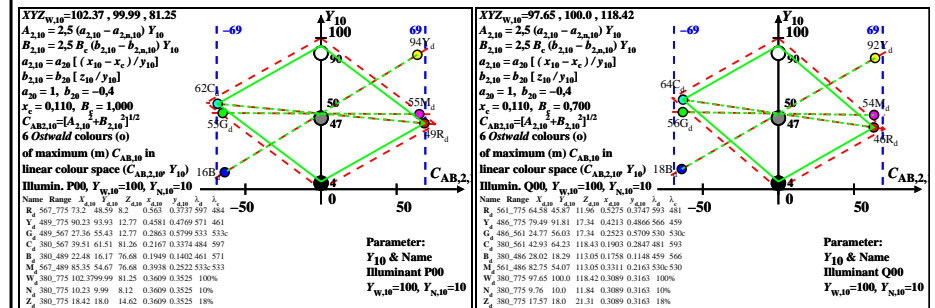
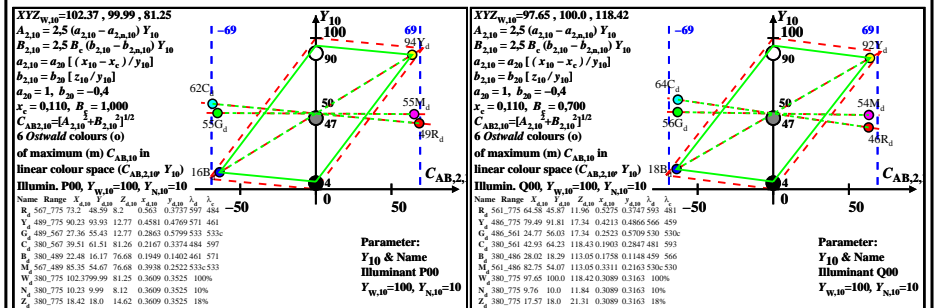
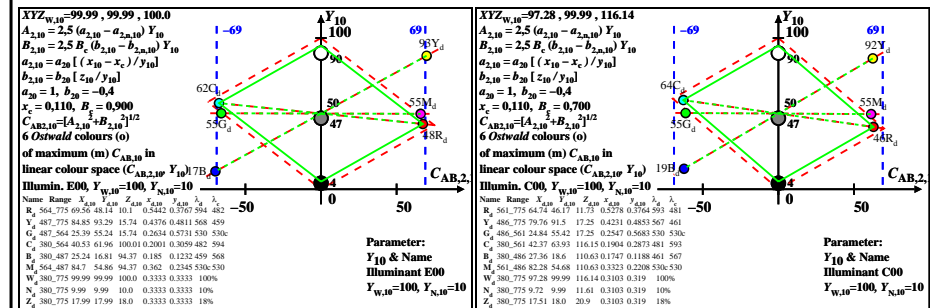
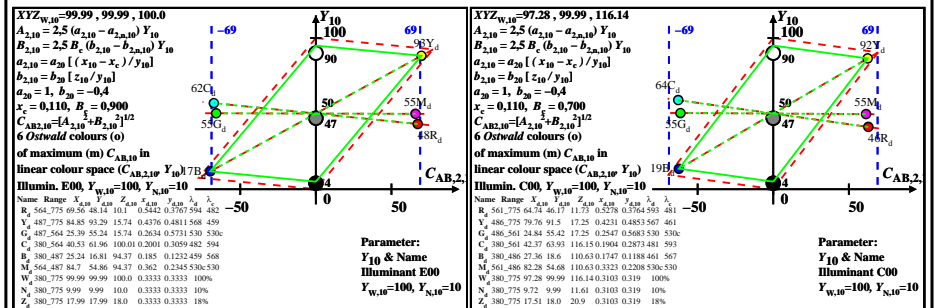
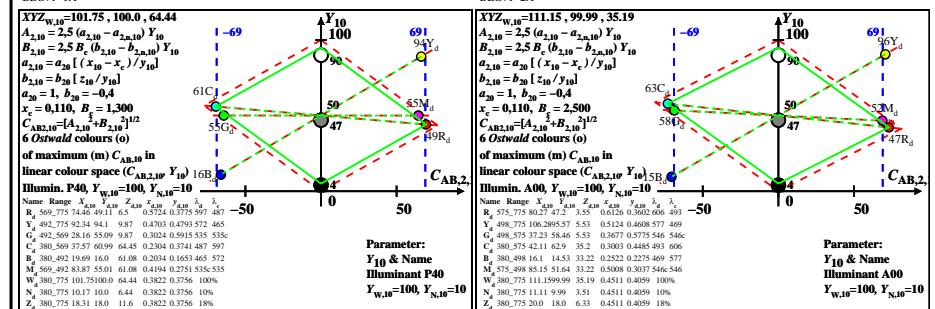
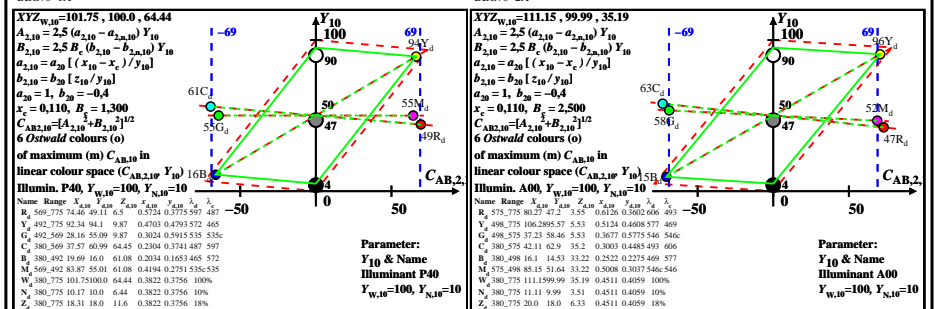
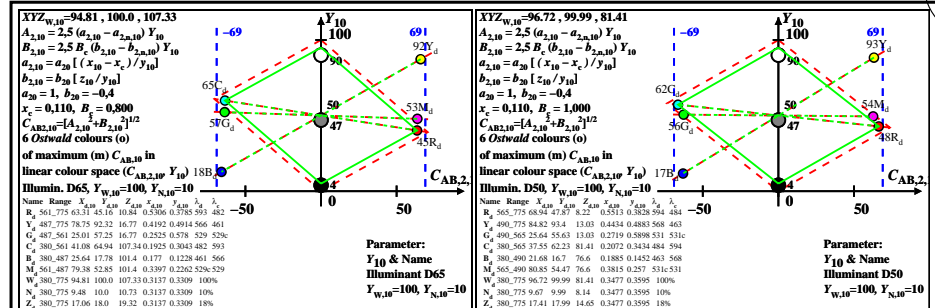
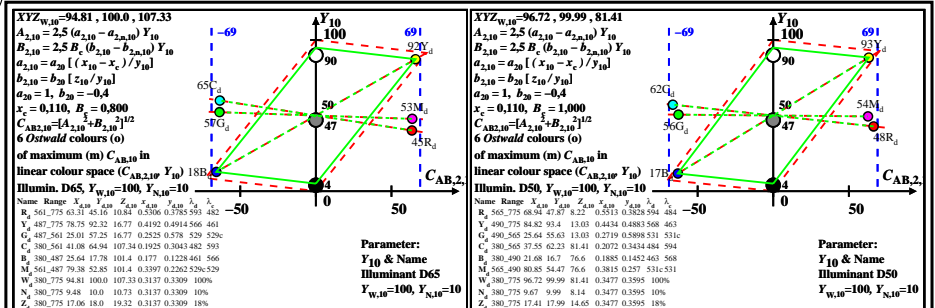


see similar files: <http://farbe.li.tu-berlin.de/BEG7/BEG7LONA.TXT>  
 technical information: <http://farbe.li.tu-berlin.de> or <http://farbe.li.tu-berlin.de/>

TUB registration: 20220301-BEG7/BEG7LONA.TXT /.PS TUB material: code=rha4ta  
 application for evaluation and measurement of display or print output



TUB-test chart BEG7; 6 Ostwald optimal colours for 8 illuminants Dxx, input: *rgb/cmy0/000k/n*  
 CIE-10, diagrams ( $C_{AB,2,10}, Y_{10}$ ),  $C=10:1$ , scale  $Y_{10}=0$  to 100, antagonistic reflection