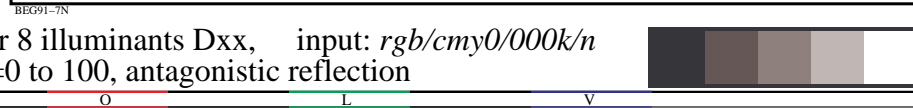
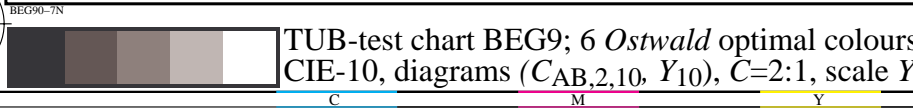
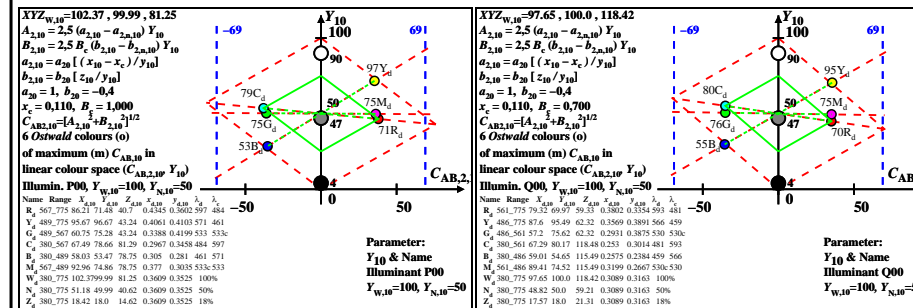
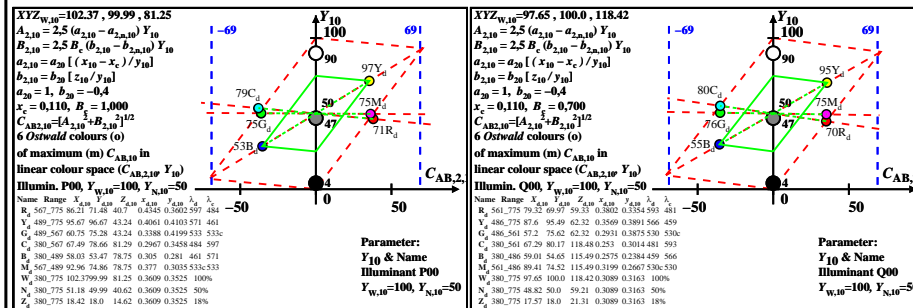
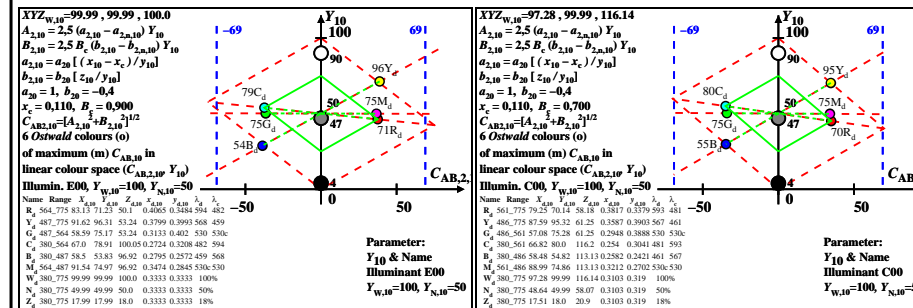
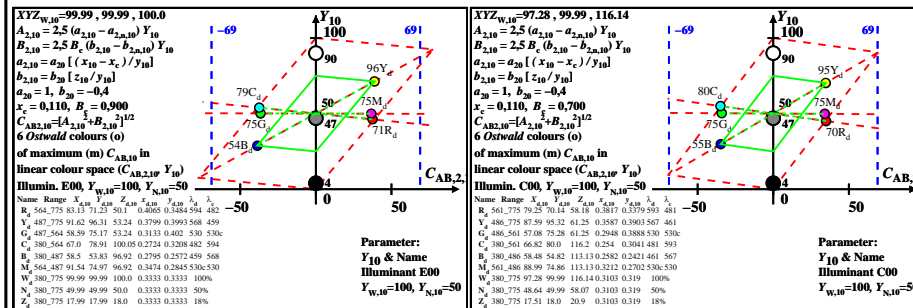
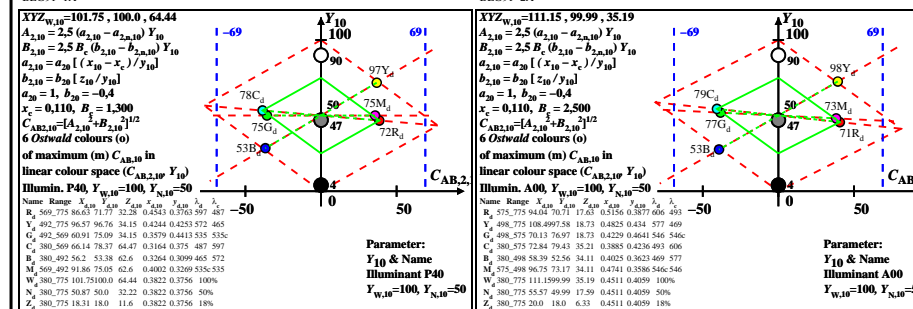
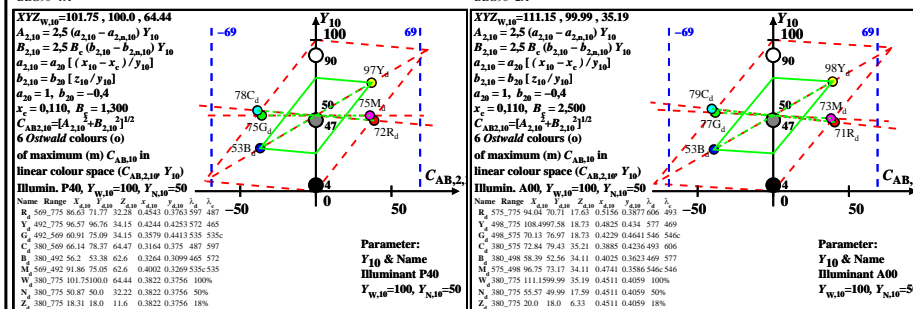
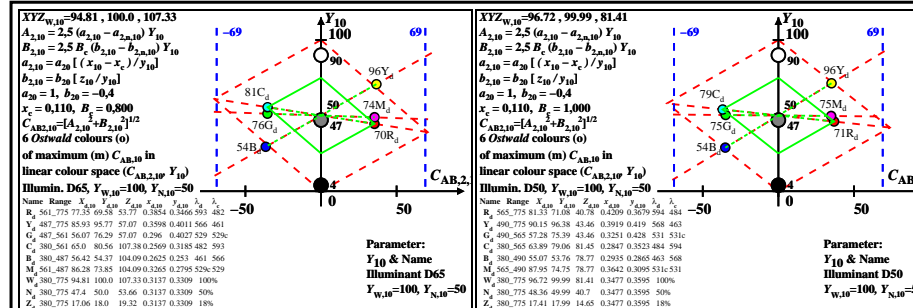
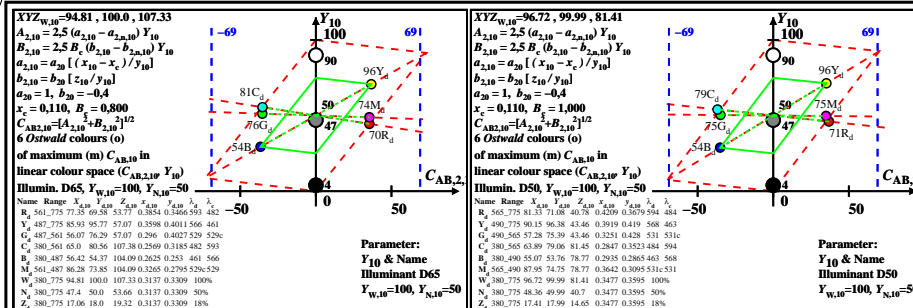


see similar files: http://farbe.li.tu-berlin.de/BEG9/BEG9.HTM  
 technical information: http://farbe.li.tu-berlin.de or http://farbe.li.tu-berlin.de/

TUB registration: 20220301-BEG9/BEG9L0NP.PDF /.PS TUB material: code=rh4ta  
 application for evaluation and measurement of display or print output



TUB-test chart BEG9; 6 Ostwald optimal colours for 8 illuminants Dxx, input: rgb/cmy0/000k/n  
 CIE-10, diagrams ( $C_{AB,210}, Y_{10}$ ),  $C=2:1$ , scale  $Y_{10}=0$  to 100, antagonistic reflection