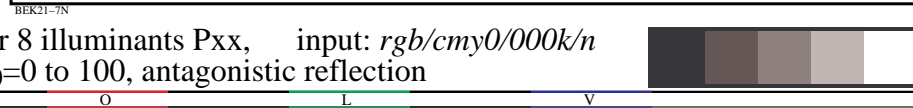
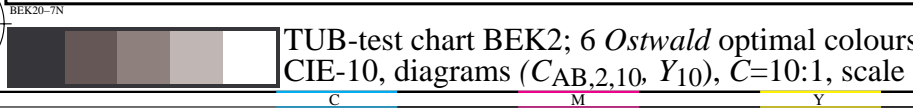
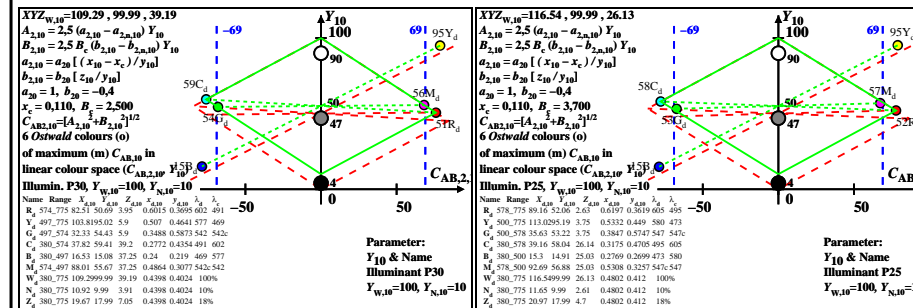
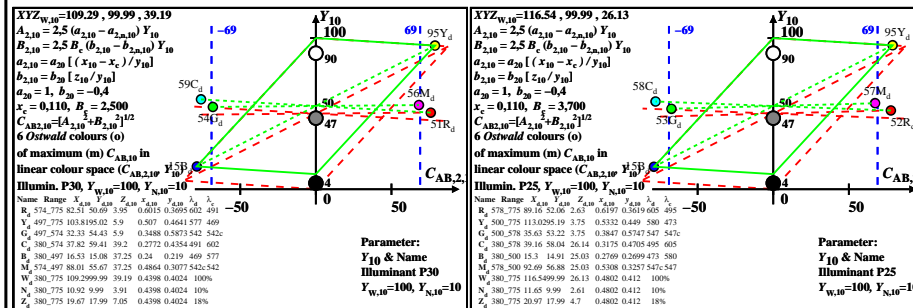
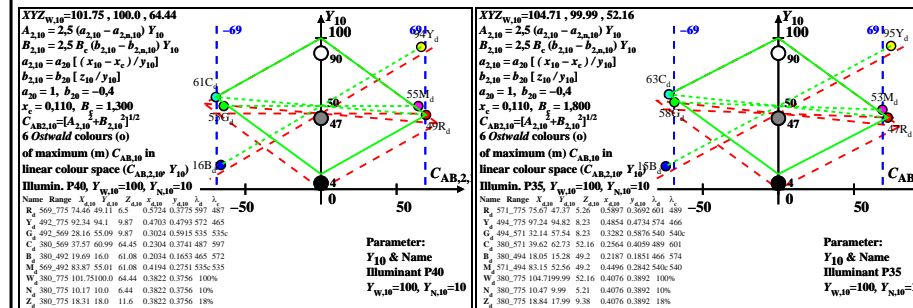
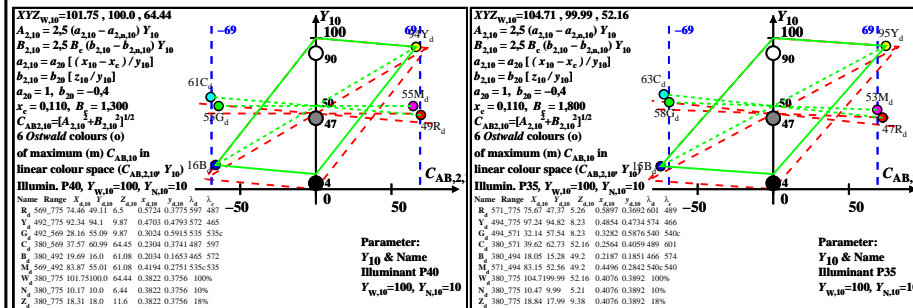
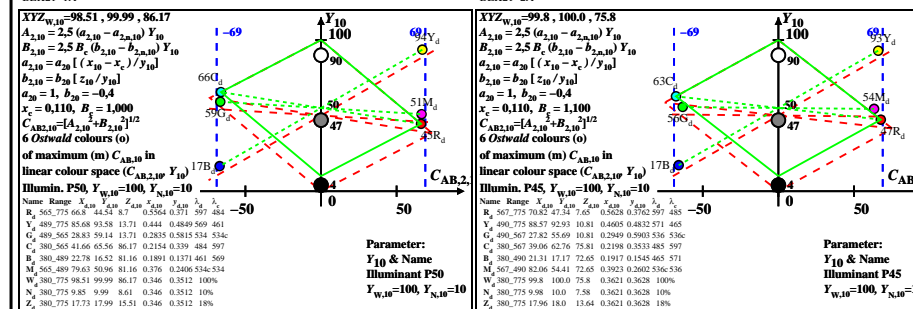
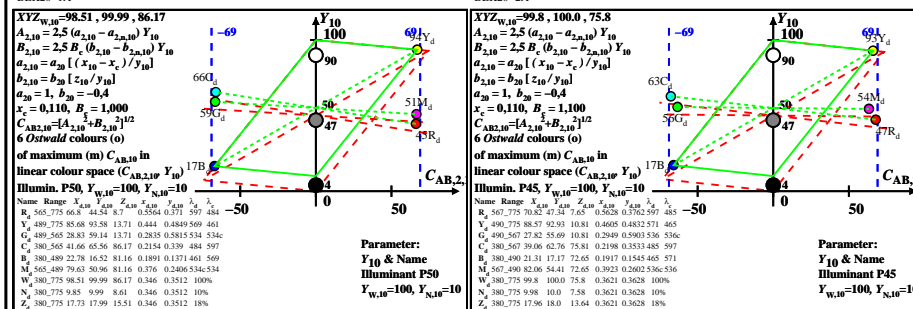
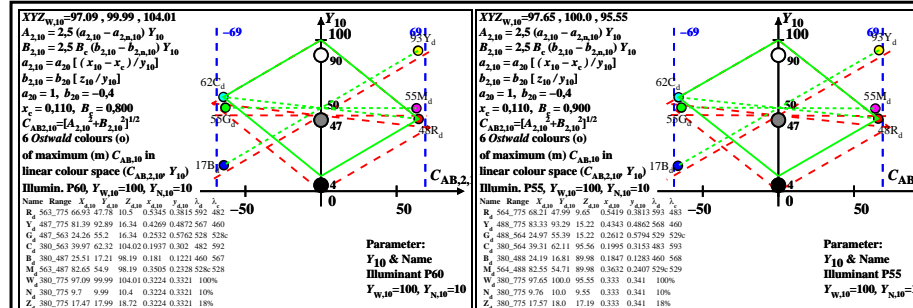
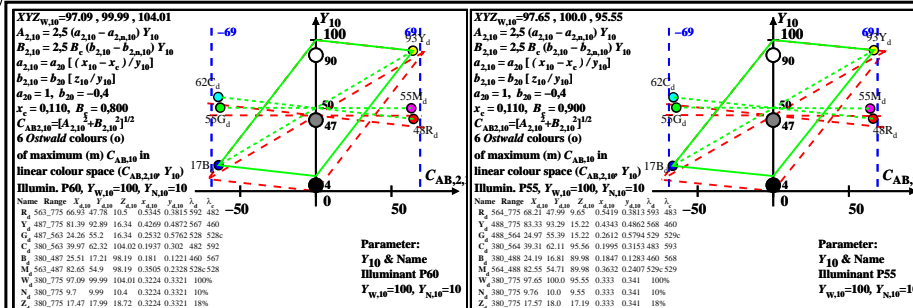


see similar files: <http://farbe.li.tu-berlin.de/BEK2/BEK2.HTM>
 technical information: <http://farbe.li.tu-berlin.de/> or <http://farbe.li.tu-berlin.de/>

TUB registration: 20220301-BEK2/BEK2LONA.TXT /.PS TUB material: code=rha4ta
 application for evaluation and measurement of display or print output



TUB-test chart BEK2; 6 Ostwald optimal colours for 8 illuminants Pxx, input: *rgb/cmy0/000k/n* CIE-10, diagrams $(C_{AB,2,10}, Y_{10})$, $C=10:1$, scale $Y_{10}=0$ to 100 , antagonistic reflection