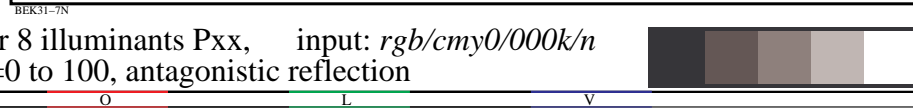
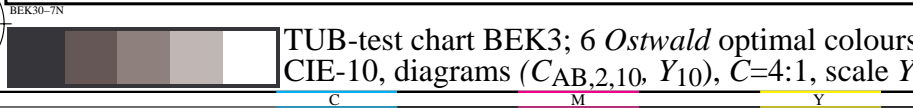
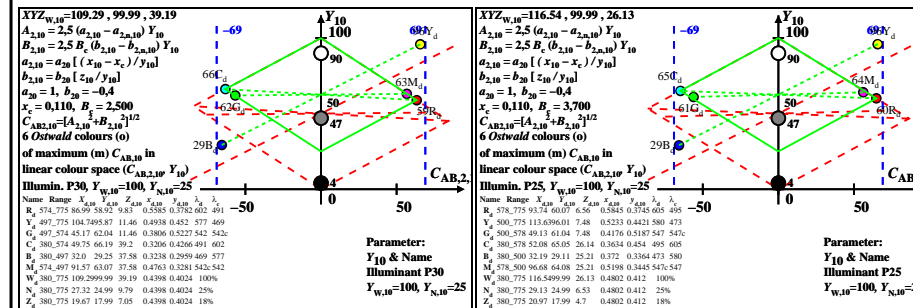
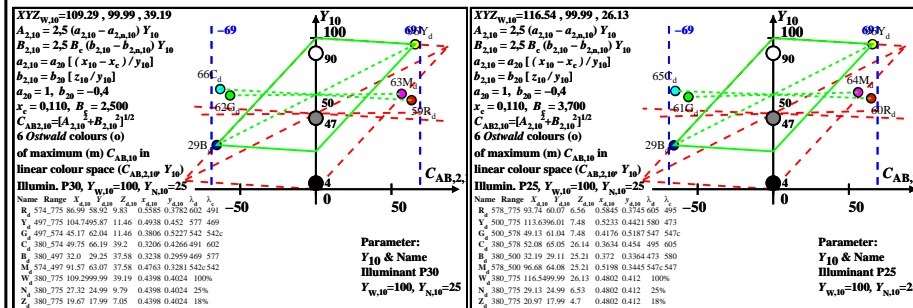
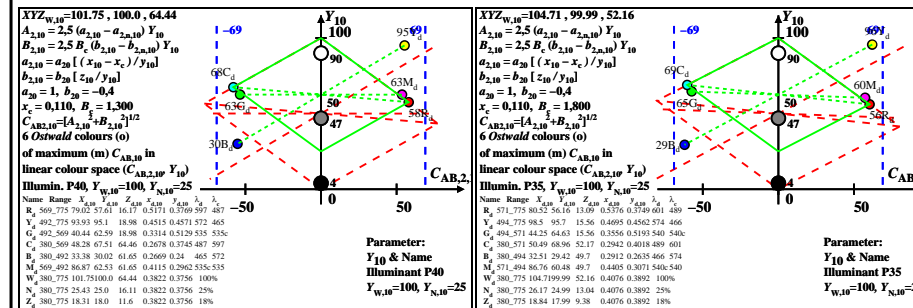
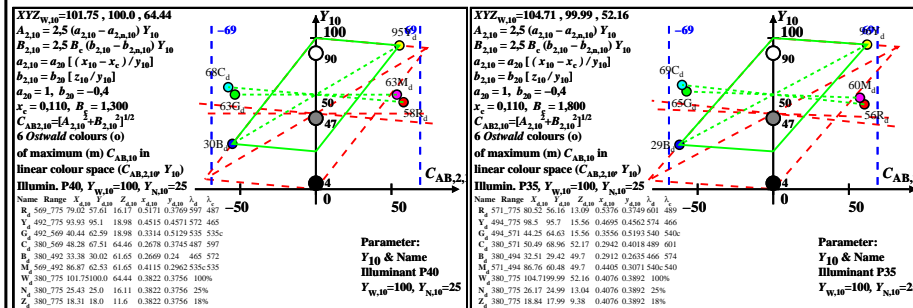
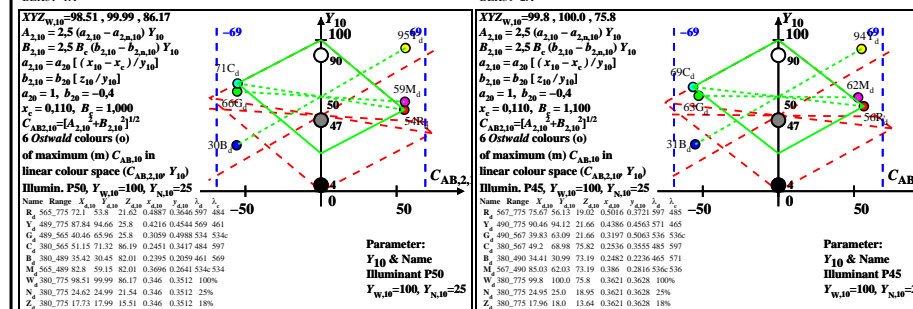
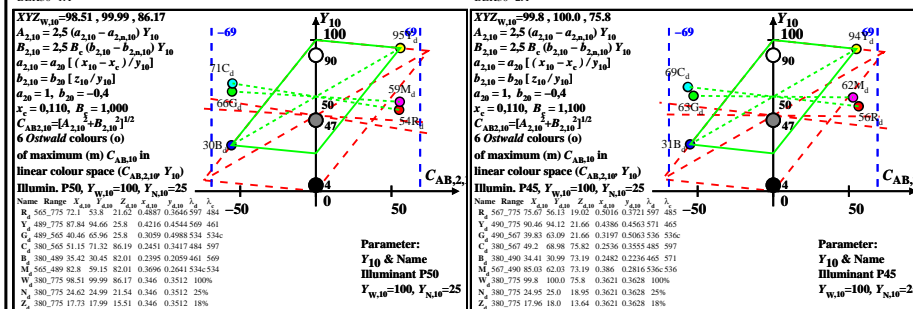
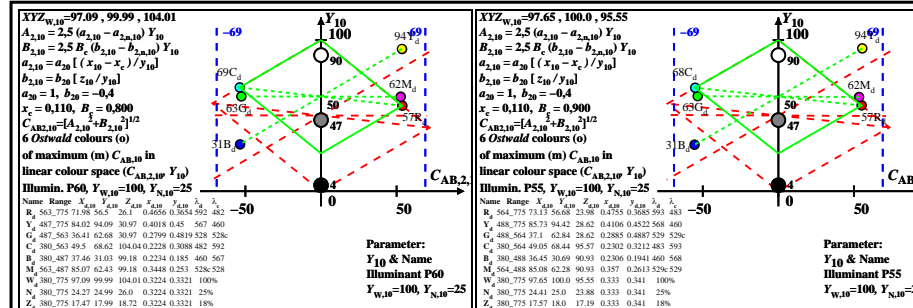
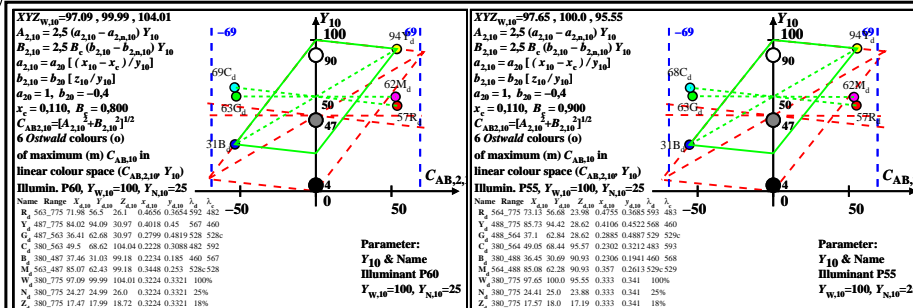


see similar files: http://farbe.li.tu-berlin.de/BEK3/BEK3.HTM
 technical information: http://farbe.li.tu-berlin.de or http://farbe.li.tu-berlin.de/

TUB registration: 20220301-BEK3/BEK3L0NP.PDF /.PS TUB material: code=rha4ta
 application for evaluation and measurement of display or print output



TUB-test chart BEK3; 6 Ostwald optimal colours for 8 illuminants Pxx, input: rgb/cmy0/000k/n CIE-10, diagrams (C_{AB,2,10}, Y₁₀), C=4:1, scale Y₁₀=0 to 100, antagonistic reflection