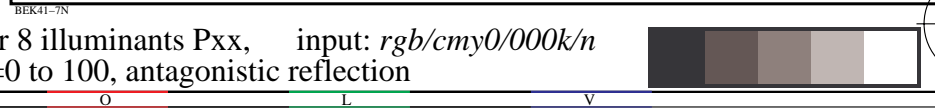
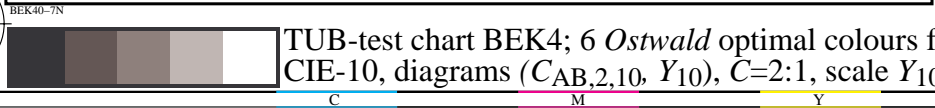
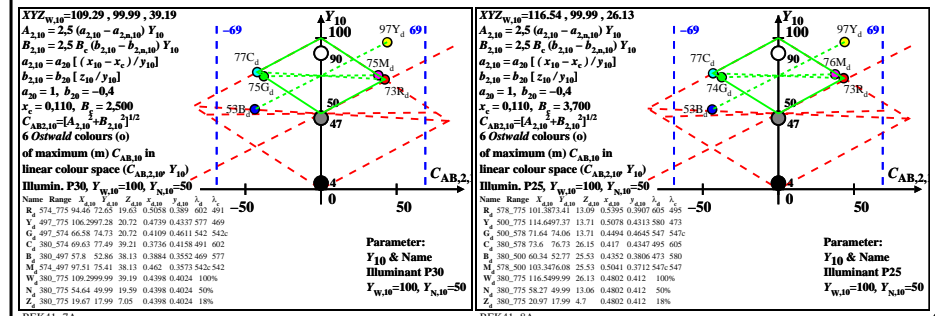
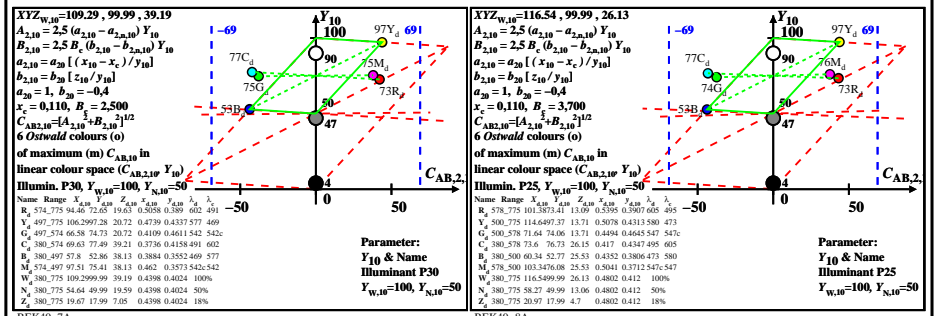
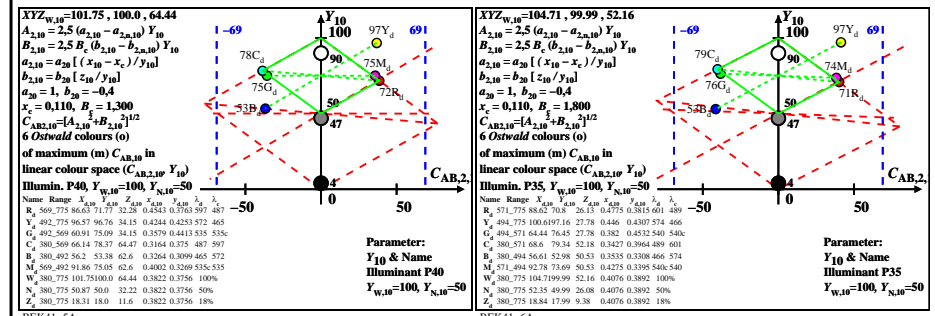
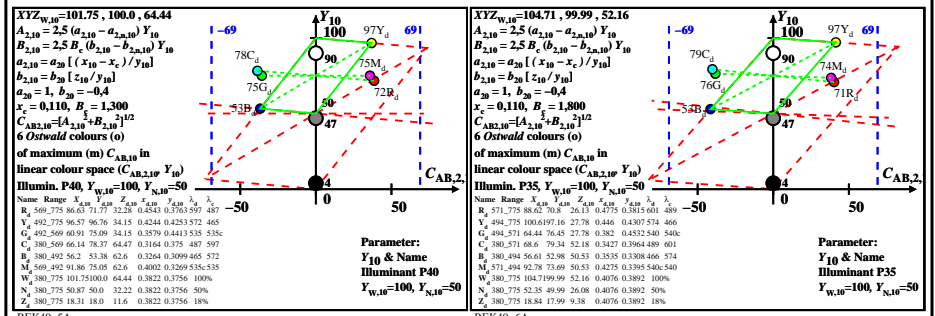
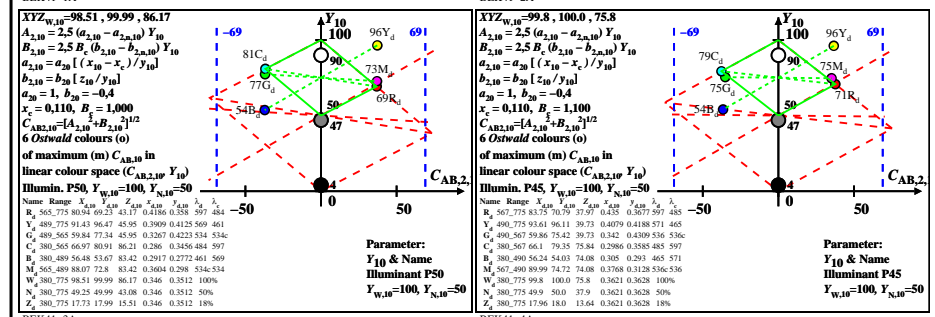
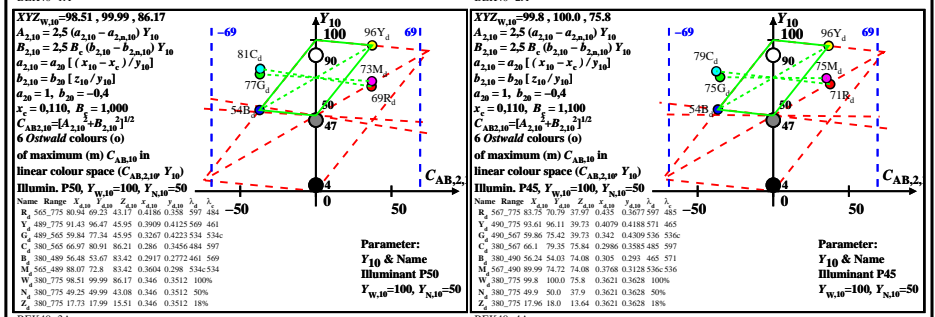
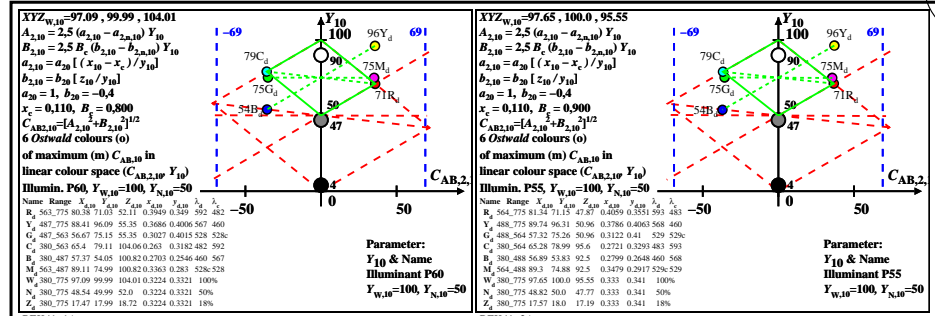
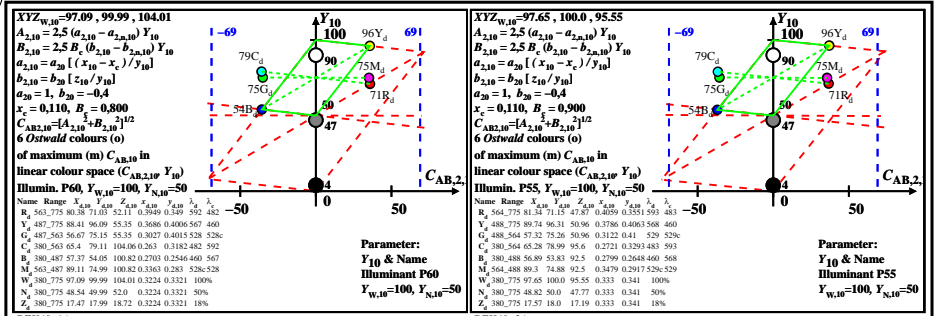


see similar files: <http://farbe.li.tu-berlin.de/BEK4/BEK4.HTM>  
 technical information: <http://farbe.li.tu-berlin.de/>

TUB registration: 20220301-BEK4/BEK4LONA.TXT /.PS TUB material: code=rh4t4  
 application for evaluation and measurement of display or print output



TUB-test chart BEK4; 6 Ostwald optimal colours for 8 illuminants Pxx, input: rgb/cmy0/000k/n CIE-10, diagrams ( $C_{AB,210}, Y_{10}$ ),  $C=2:1$ , scale  $Y_{10}=0$  to 100, antagonistic reflection