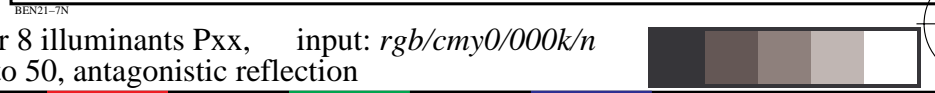
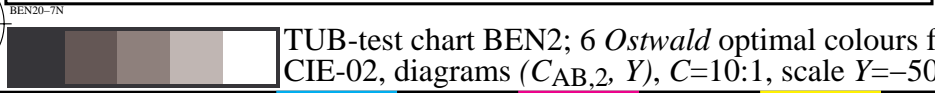
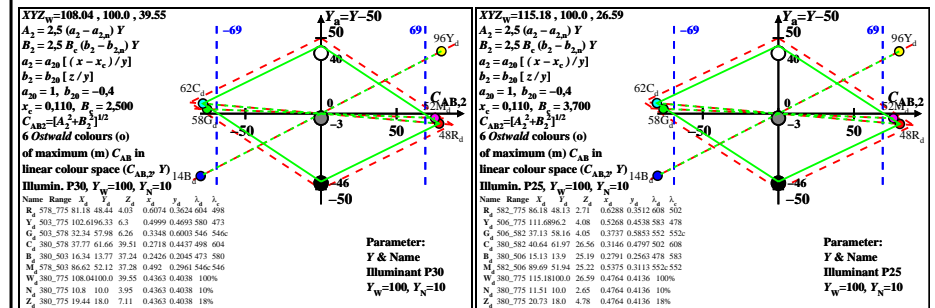
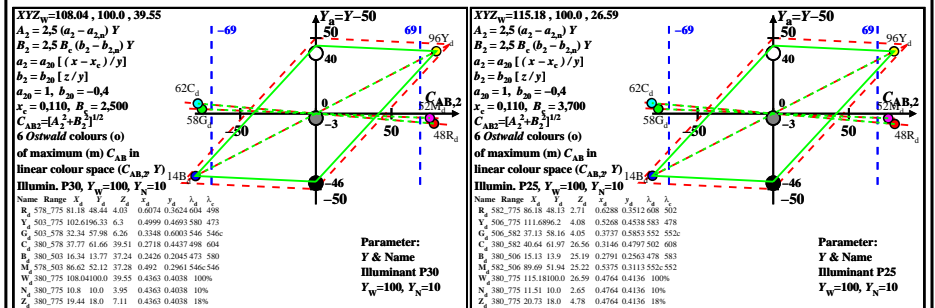
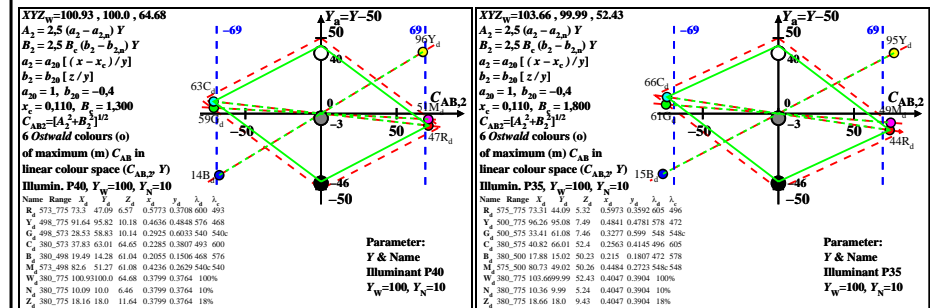
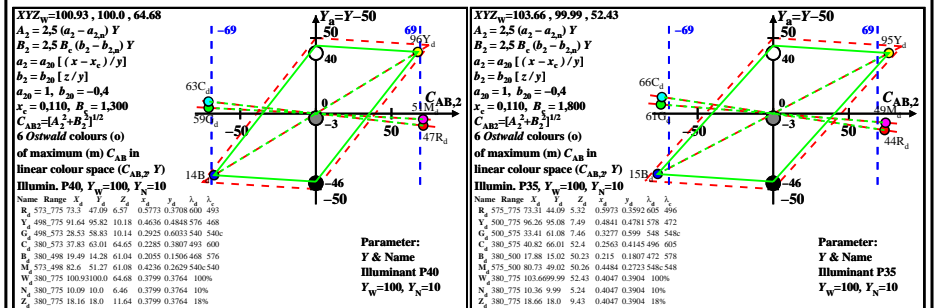
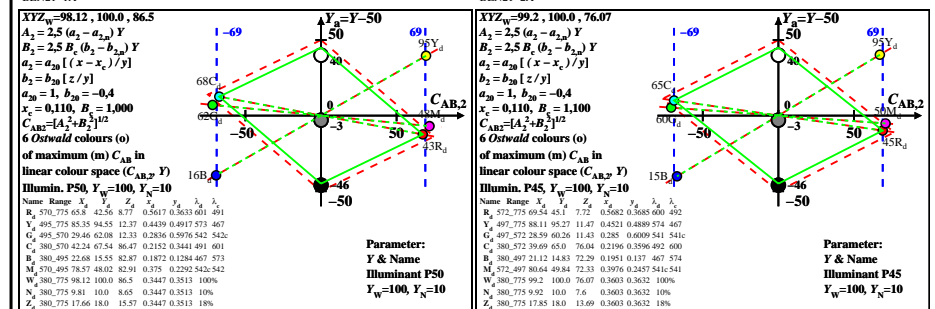
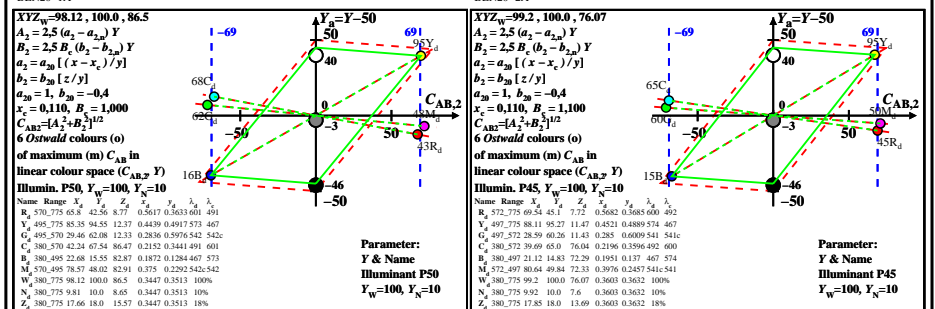
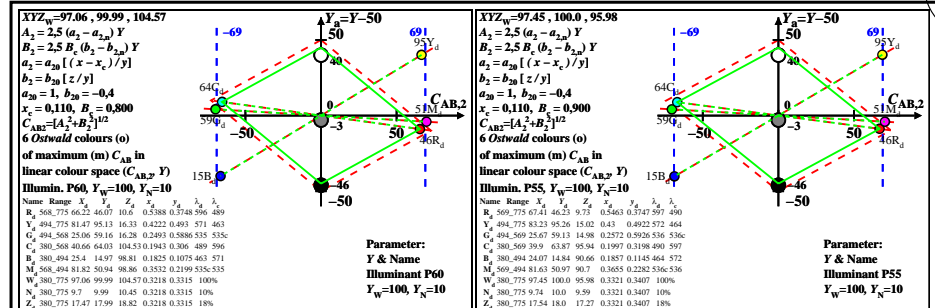
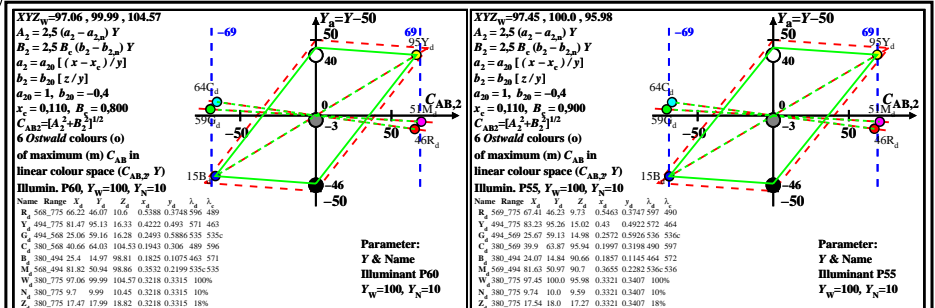


<http://farbe.li.tu-berlin.de/BEN2/BEN2LONA.TXT> /PS; only vector graphic VG; start output N: no 3D-linearization (OL) in file (F) or PS-startup (S), page 1/1

see similar files: <http://farbe.li.tu-berlin.de/BEN2/BEN2LONA.TXT>
 technical information: <http://farbe.li.tu-berlin.de> or <http://farbe.li.tu-berlin.de/>

TUB registration: 20220301-BEN2/BEN2LONA.TXT /PS
 application for evaluation and measurement of display or print output
 TUB material: code=rha4ta



TUB-test chart BEN2; 6 Ostwald optimal colours for 8 illuminants Pxx, input: rgb/cmy0/000k/n
 CIE-02, diagrams ($C_{AB,2}, Y$), C=10:1, scale $Y=-50$ to 50, antagonistic reflection