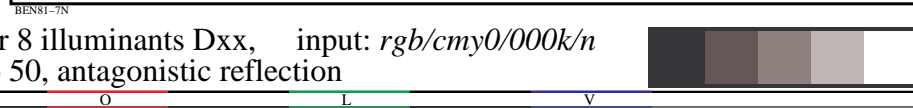
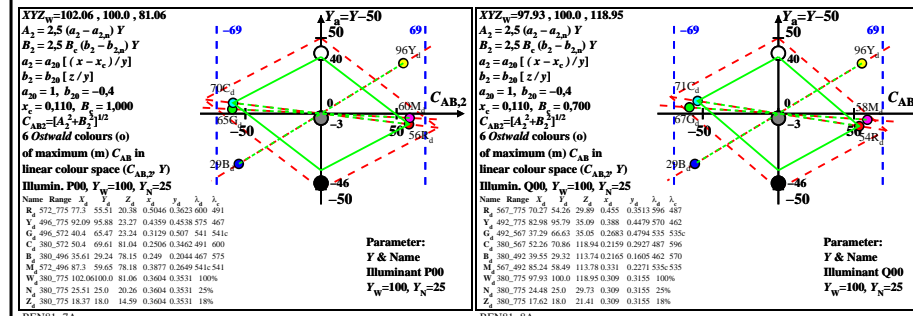
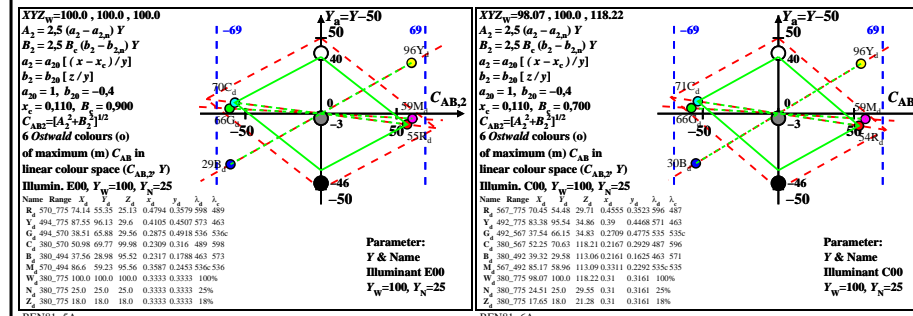
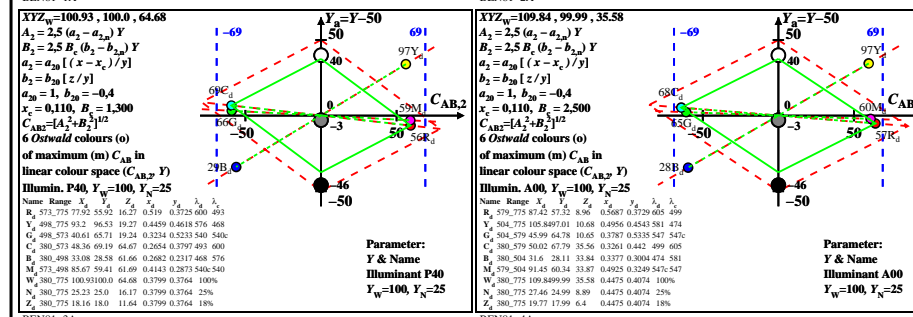
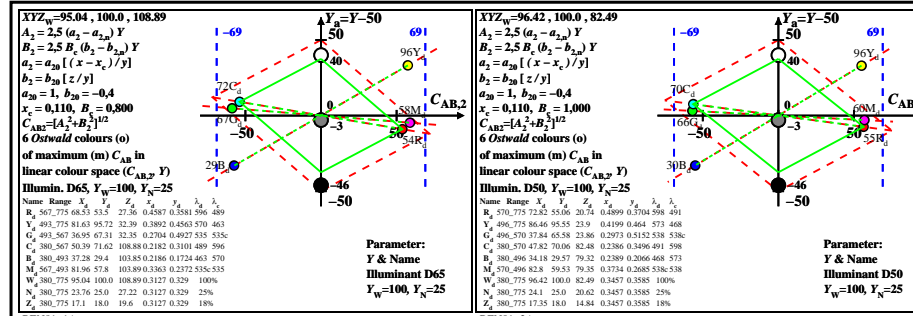
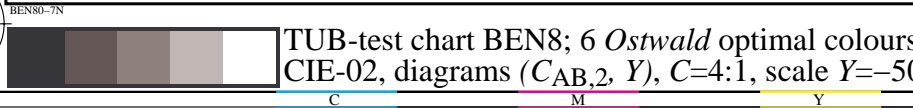
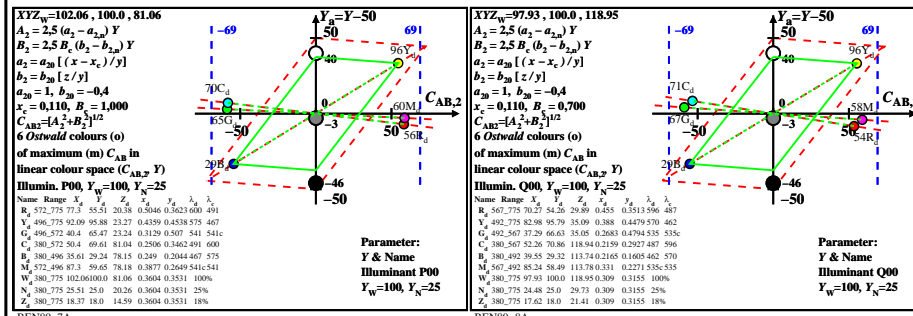
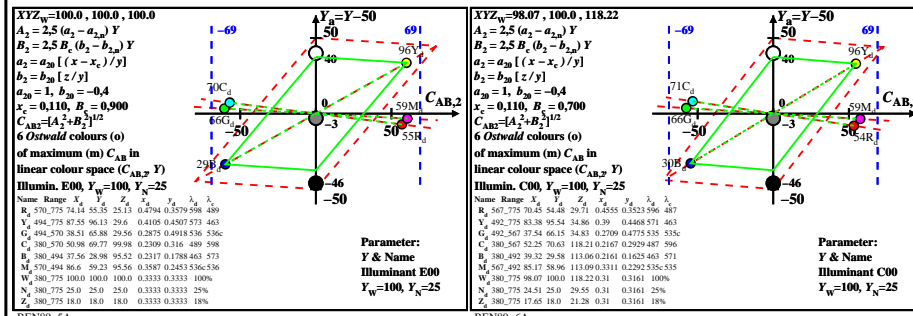
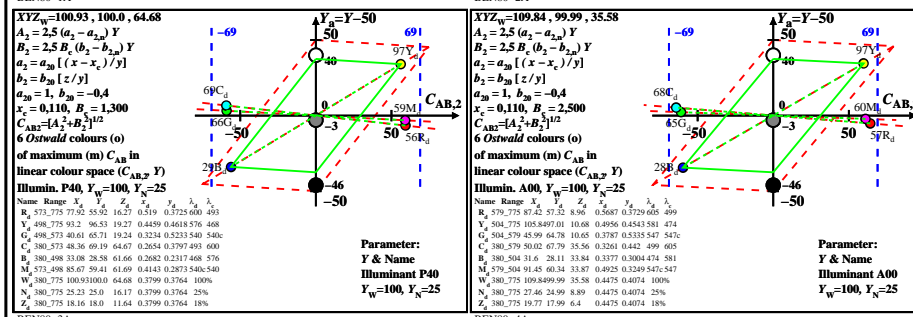
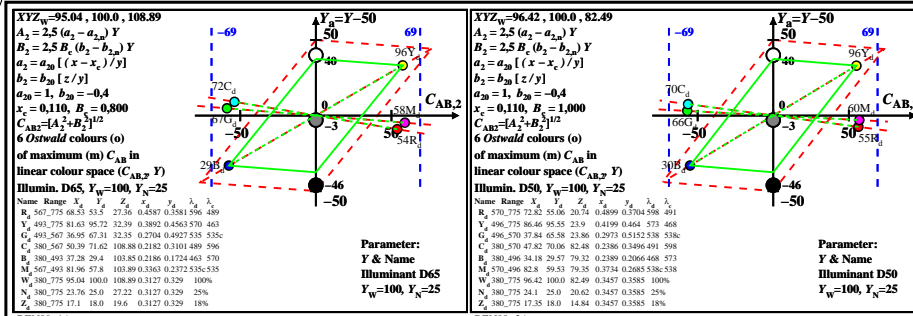


see similar files: http://farbe.li.tu-berlin.de/BEN8/BEN8LONP.PDF /.PS
 technical information: http://farbe.li.tu-berlin.de or http://farbe.li.tu-berlin.de/

TUB registration: 20220301-BEN8/BEN8LONP.PDF /.PS
 application for evaluation and measurement of display or print output
 TUB material: code=rha4ta



TUB-test chart BEN8; 6 Ostwald optimal colours for 8 illuminants Dxx, input: rgb/cmy0/000k/n
 CIE-02, diagrams ($C_{AB,2}, Y$), C=4:1, scale $Y=-50$ to 50, antagonistic reflection