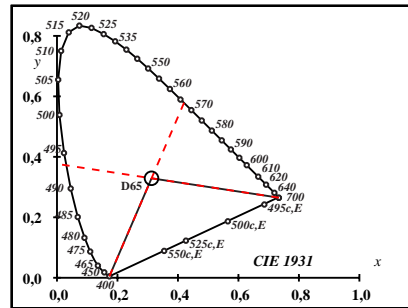
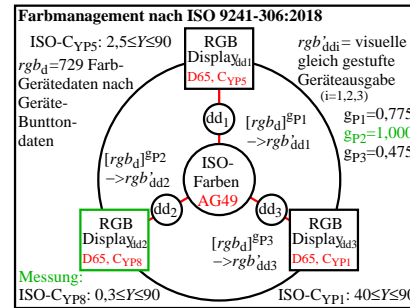


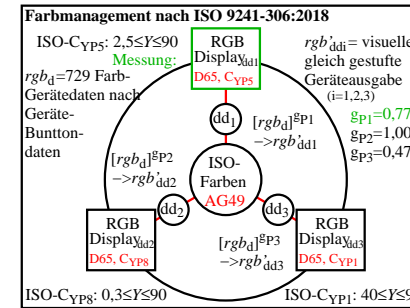
BGA20-1N



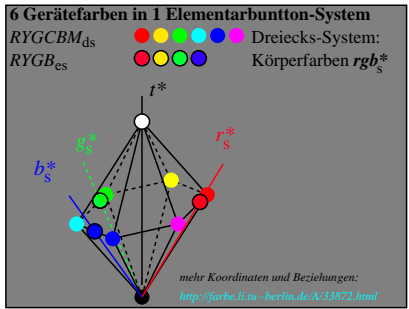
BGA20-2N



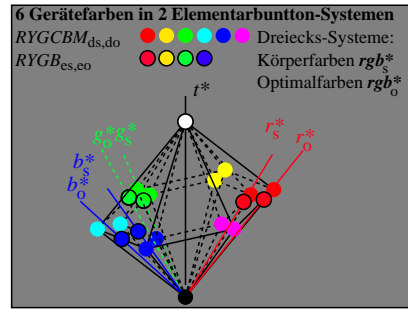
BGA21-1N



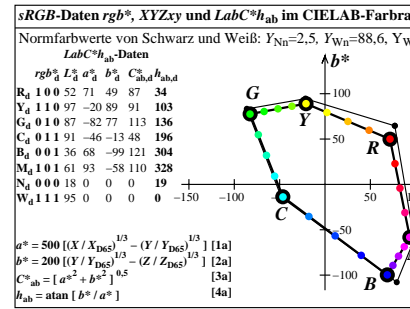
BGA21-2N



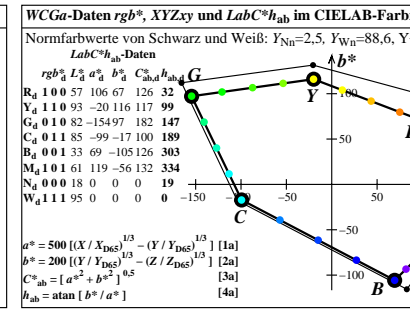
BGA20-3N



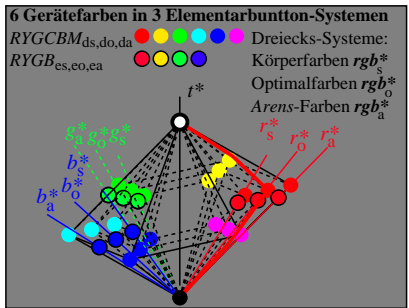
BGA20-4N



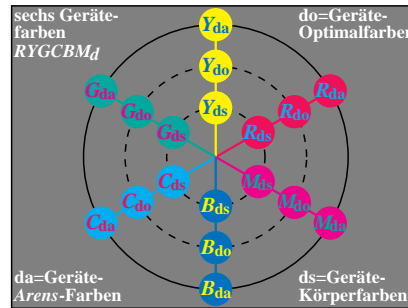
BGA21-3N



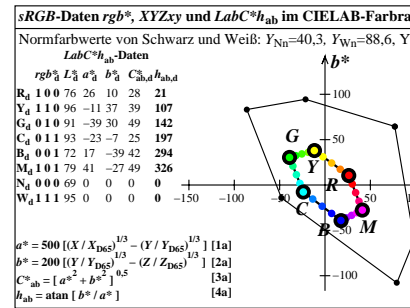
BGA21-4N



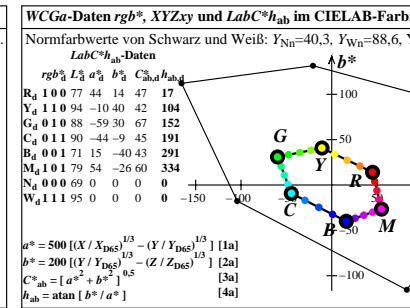
BGA21-6N



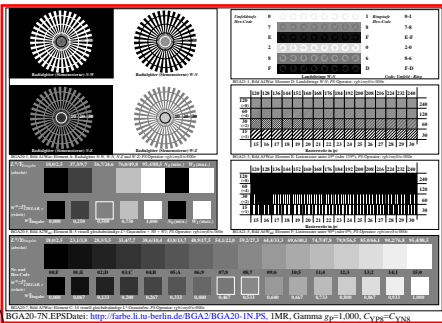
BGA21-6N



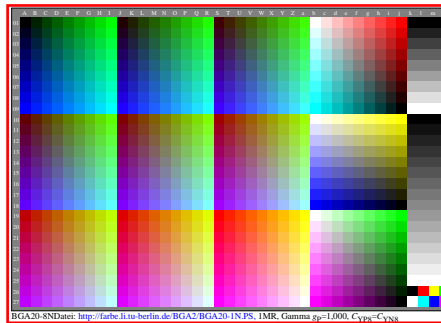
BGA21-5N



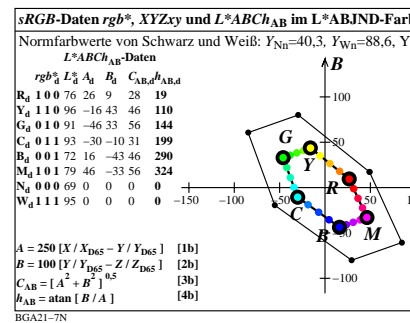
BGA21-6N



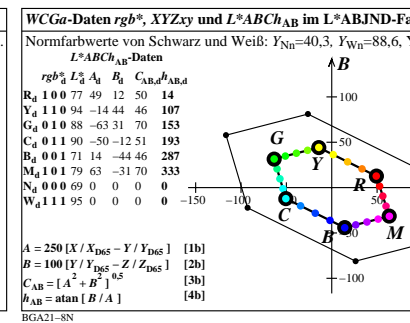
BGA20-7N.EPS>Datei: http://farbe.li.tu-berlin.de/BGA2/BGA20-7N.PS, IMR, Gamma gp=1.000, Cypgs=Cypgs



BGA20-8N.Datei: http://farbe.li.tu-berlin.de/BGA2/BGA20-8N.PS, IMR, Gamma gp=1.000, Cypgs=Cypgs



BGA21-7N



BGA21-8N