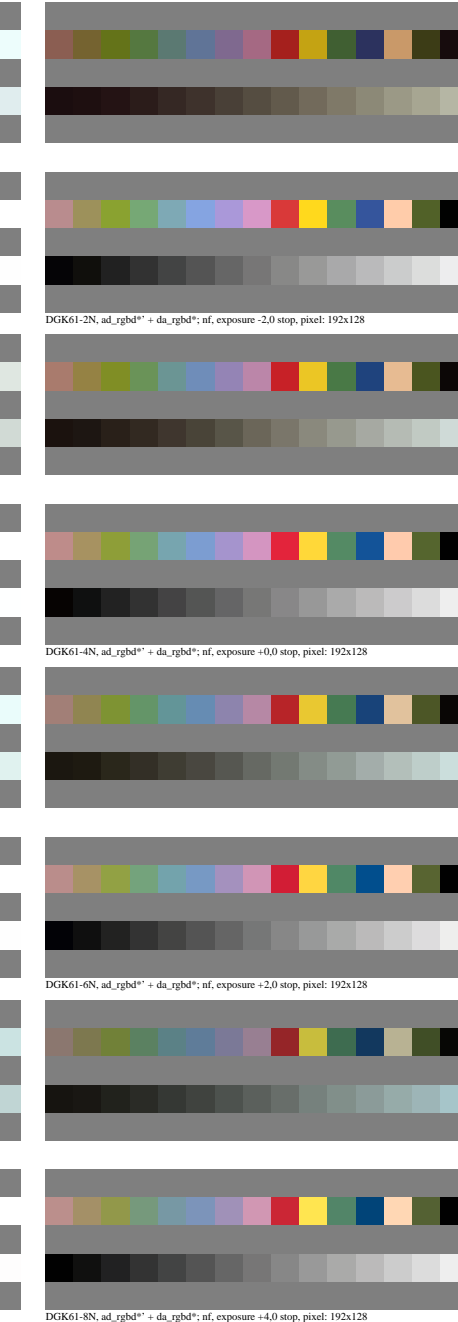
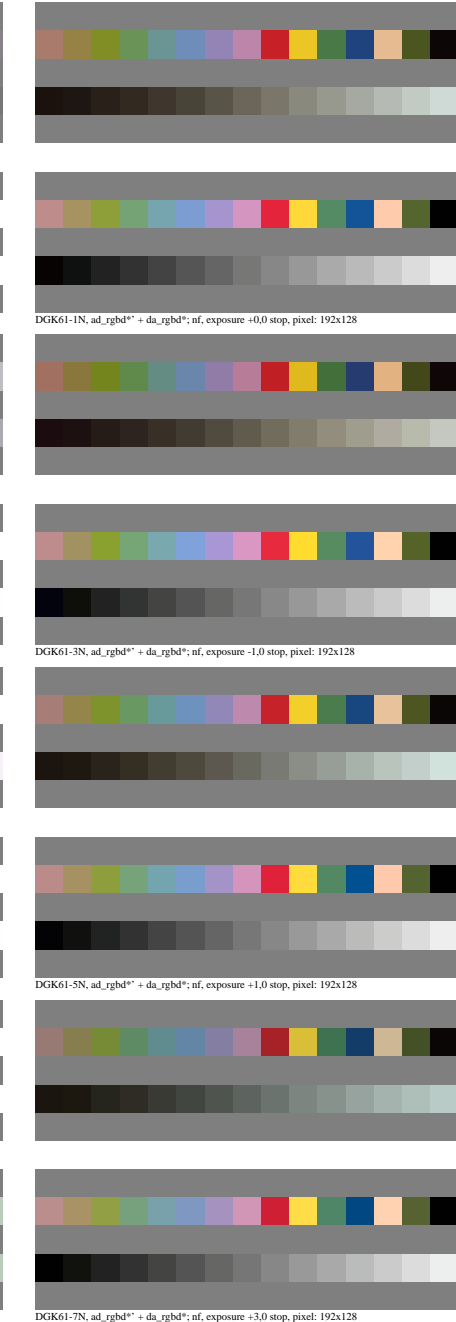
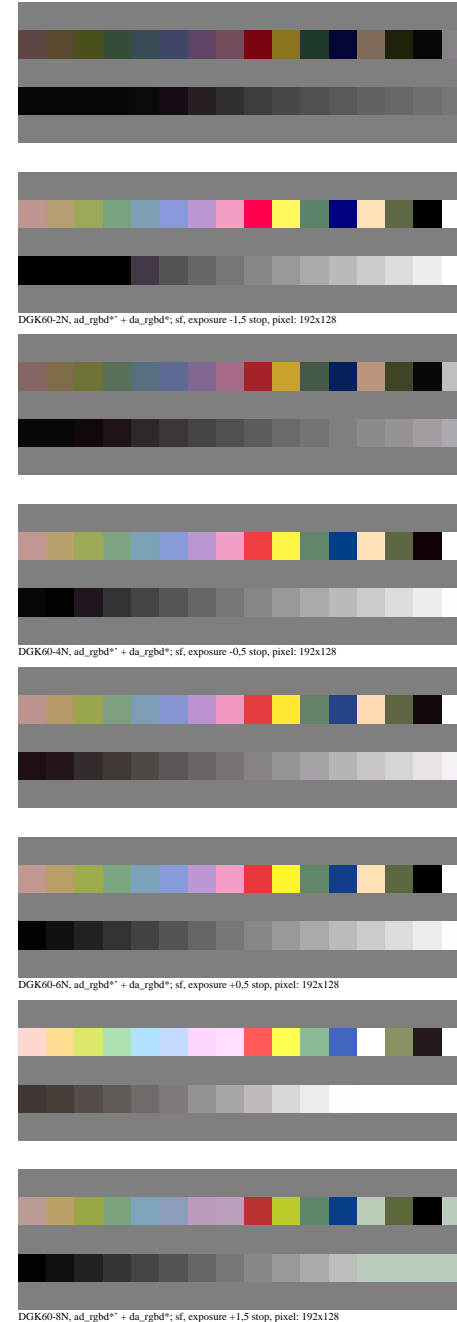
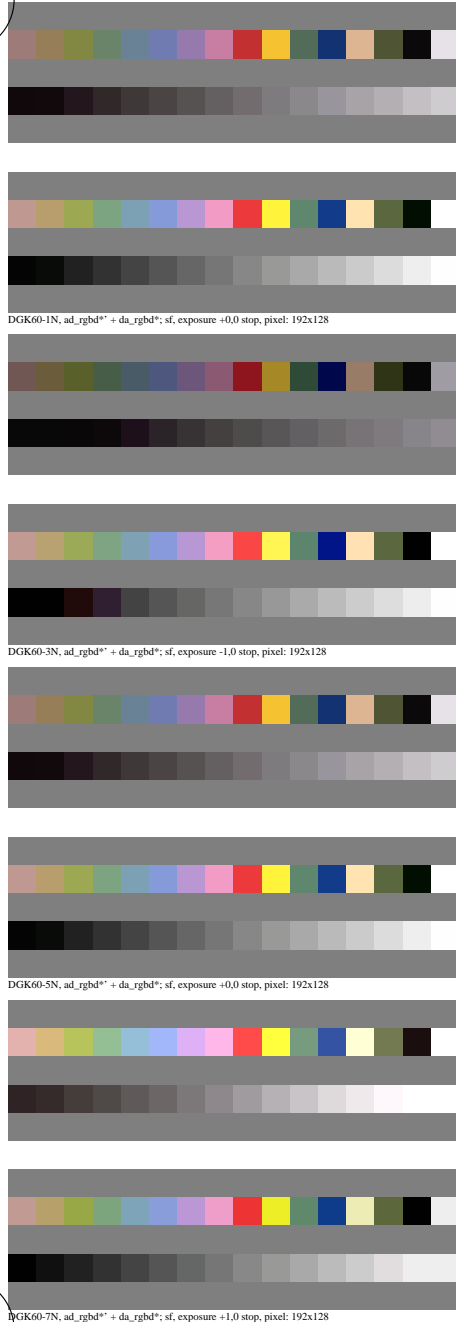


Siehe ähnliche Dateien: <http://farbe.li.tu-berlin.de/DGK6/DGK6.HTM>
Technische Information: <http://farbe.li.tu-berlin.de/> oder <http://color.li.tu-berlin.de/>

TUB-Registrierung: 20220901-DGK6/DGK6L0NP.PDF /.PS
Anwendung für Messung von Display- oder Druck-Ausgabe

TUB-Material: Code=rh4ta



DGK60-1N, ad_rgbd** + da_rgbd**, sf, exposure +0,0 stop, pixel: 192x128

DGK60-2N, ad_rgbd** + da_rgbd**, sf, exposure -1,5 stop, pixel: 192x128

DGK61-1N, ad_rgbd** + da_rgbd**, nf, exposure +0,0 stop, pixel: 192x128

DGK61-2N, ad_rgbd** + da_rgbd**, nf, exposure -2,0 stop, pixel: 192x128

DGK60-3N, ad_rgbd** + da_rgbd**, sf, exposure -1,0 stop, pixel: 192x128

DGK60-4N, ad_rgbd** + da_rgbd**, sf, exposure -0,5 stop, pixel: 192x128

DGK61-3N, ad_rgbd** + da_rgbd**, nf, exposure -1,0 stop, pixel: 192x128

DGK61-4N, ad_rgbd** + da_rgbd**, nf, exposure +0,0 stop, pixel: 192x128

DGK60-5N, ad_rgbd** + da_rgbd**, sf, exposure +0,0 stop, pixel: 192x128

DGK60-6N, ad_rgbd** + da_rgbd**, sf, exposure +0,5 stop, pixel: 192x128

DGK61-5N, ad_rgbd** + da_rgbd**, nf, exposure +1,0 stop, pixel: 192x128

DGK61-6N, ad_rgbd** + da_rgbd**, nf, exposure +2,0 stop, pixel: 192x128

DGK60-7N, ad_rgbd** + da_rgbd**, sf, exposure +1,0 stop, pixel: 192x128

DGK60-8N, ad_rgbd** + da_rgbd**, sf, exposure +1,5 stop, pixel: 192x128

DGK61-7N, ad_rgbd** + da_rgbd**, nf, exposure +3,0 stop, pixel: 192x128

DGK61-8N, ad_rgbd** + da_rgbd**, nf, exposure +4,0 stop, pixel: 192x128