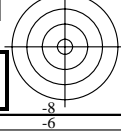
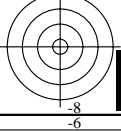
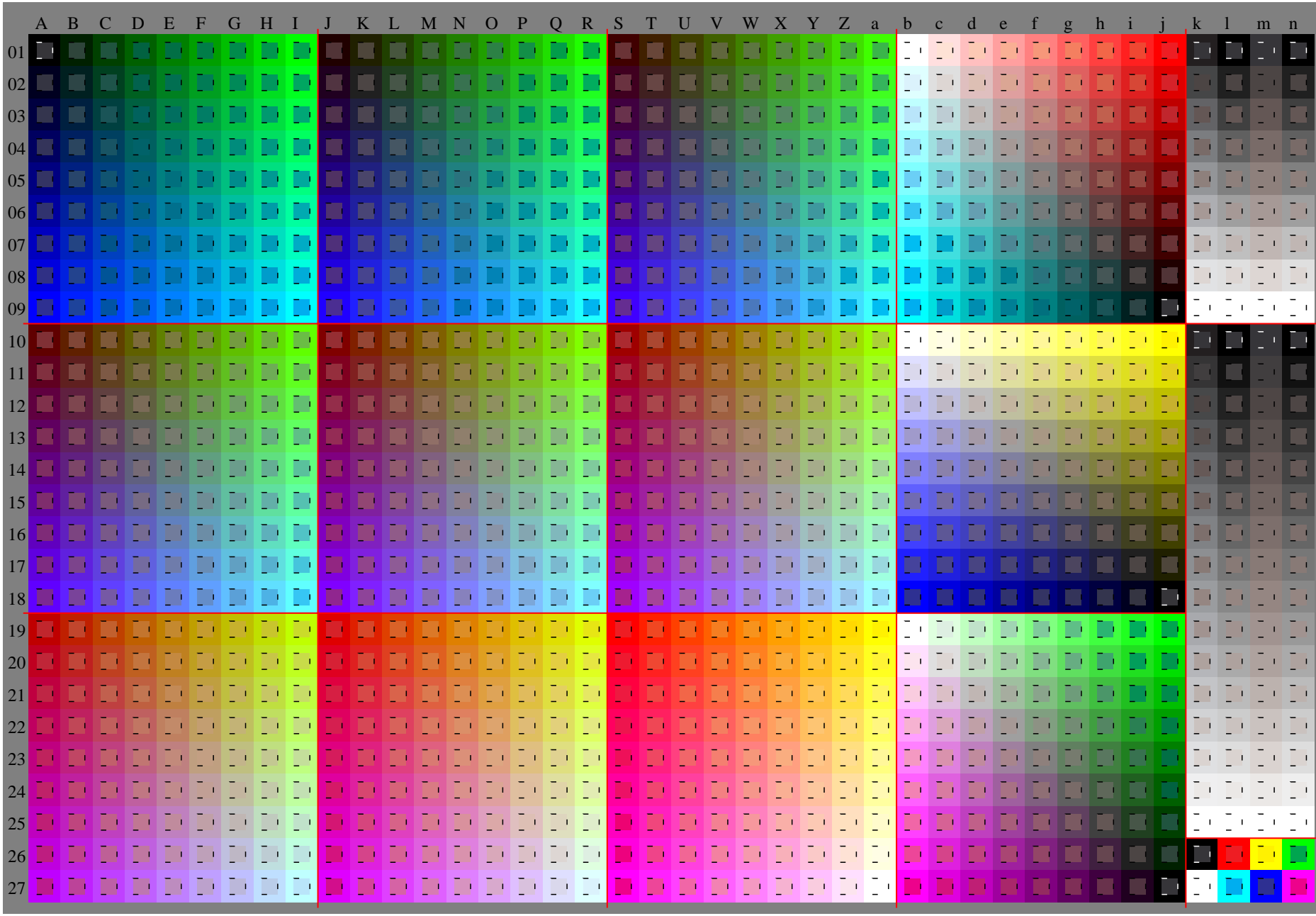
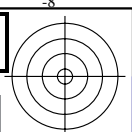
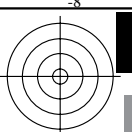


See original or copy: <http://web.me.com/klaus.richter/GE23/GE23L0NA.TXT> /.PS
Technical information: <http://www.ps.bam.de> V 2.1, io=1,1, Cx=2; cfl=1.00; nt=0,18; nx=1.0

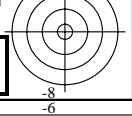
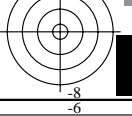
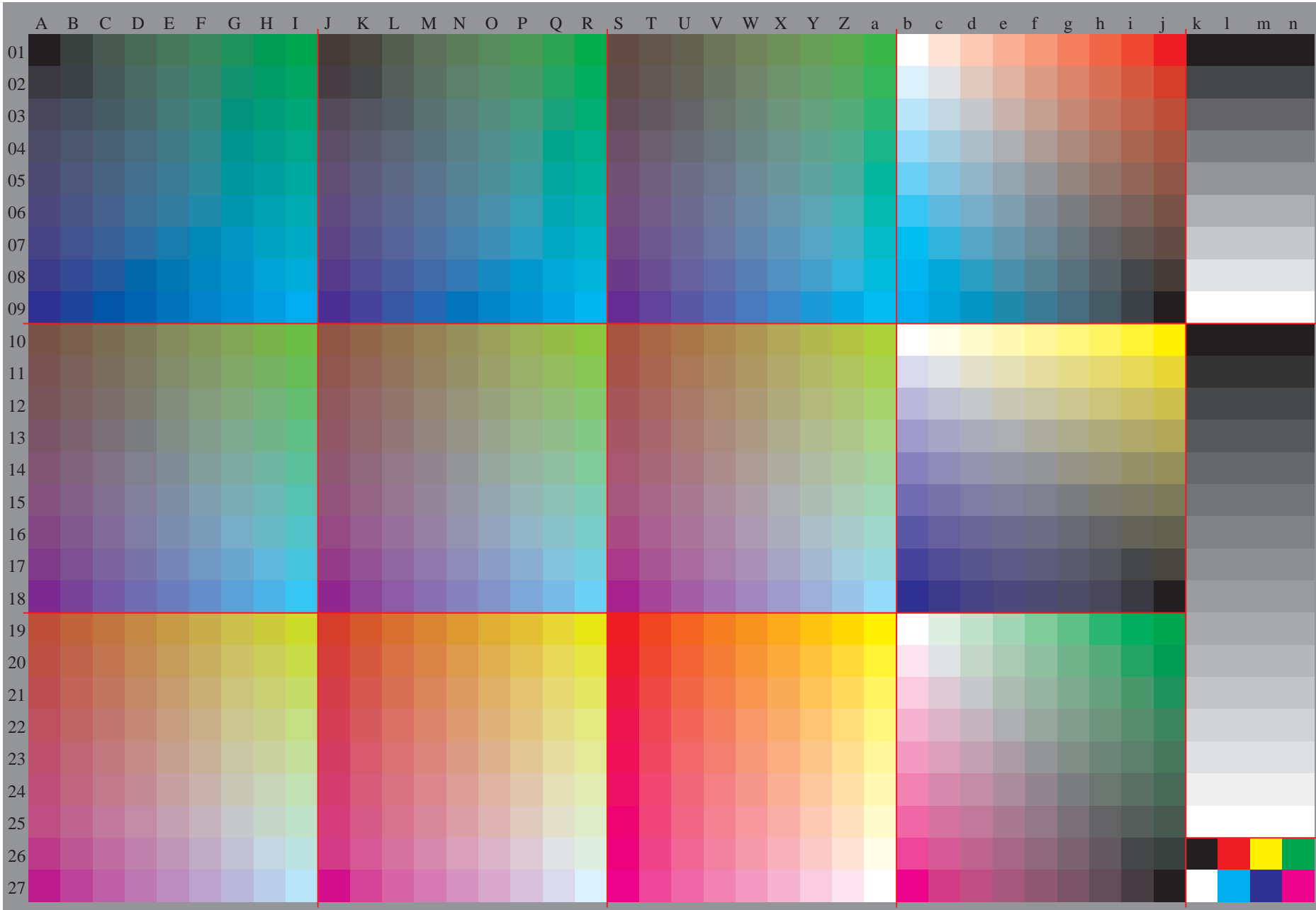
TUB registration: 20091101-GE23/GE23L0NA.TXT /.PS TUB material: code=rh4ta
application for evaluation and measurement of printer or monitor systems

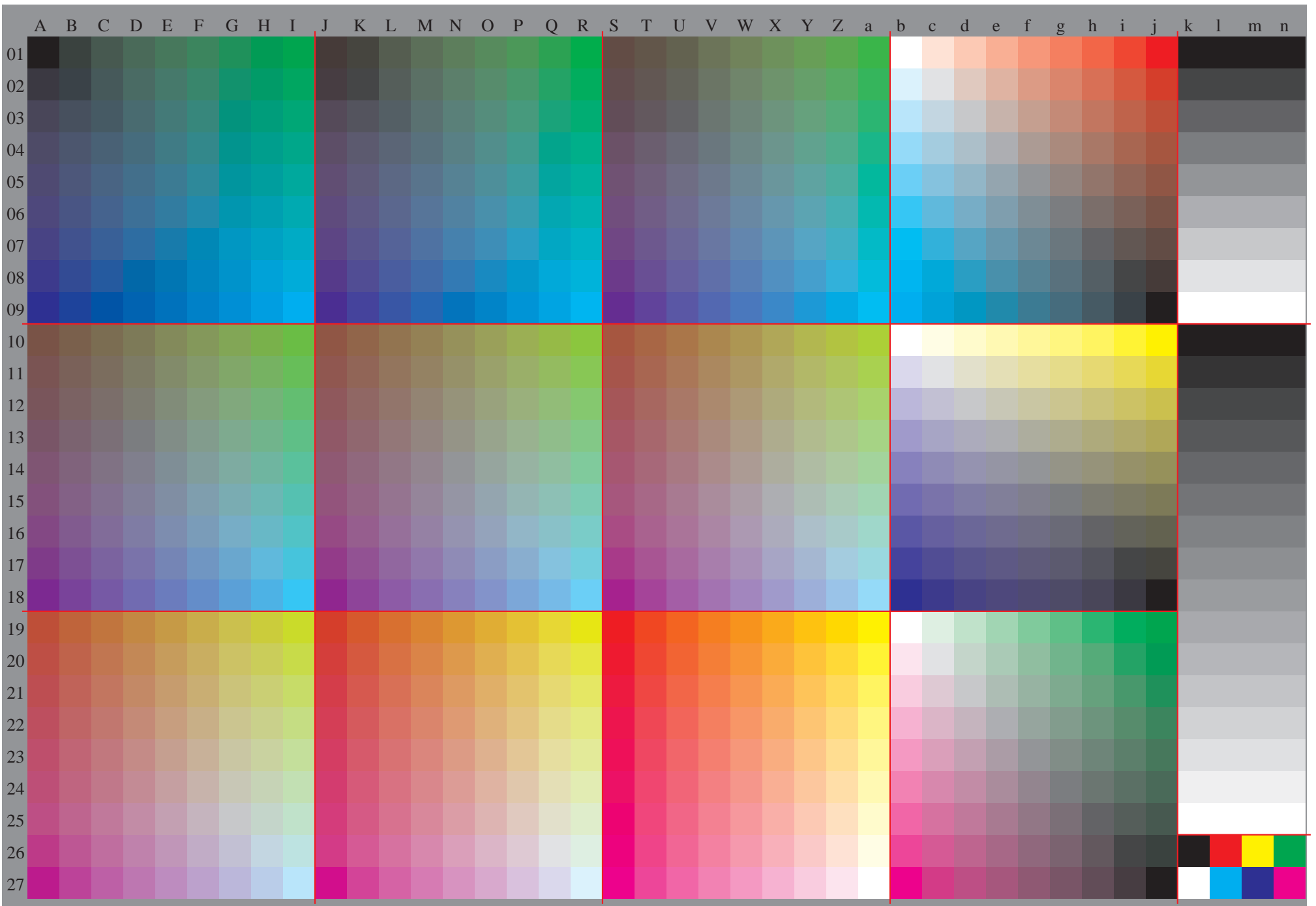


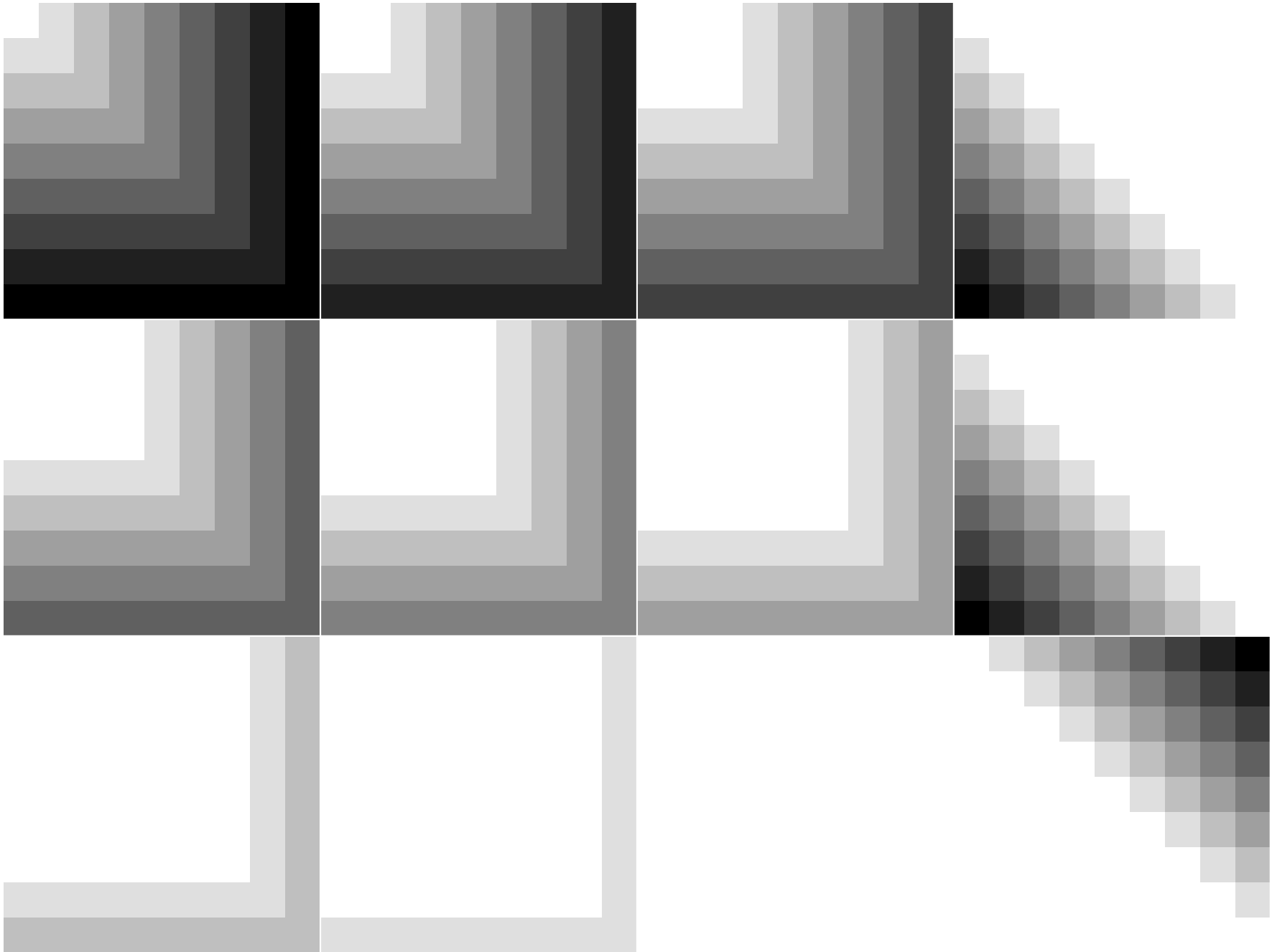


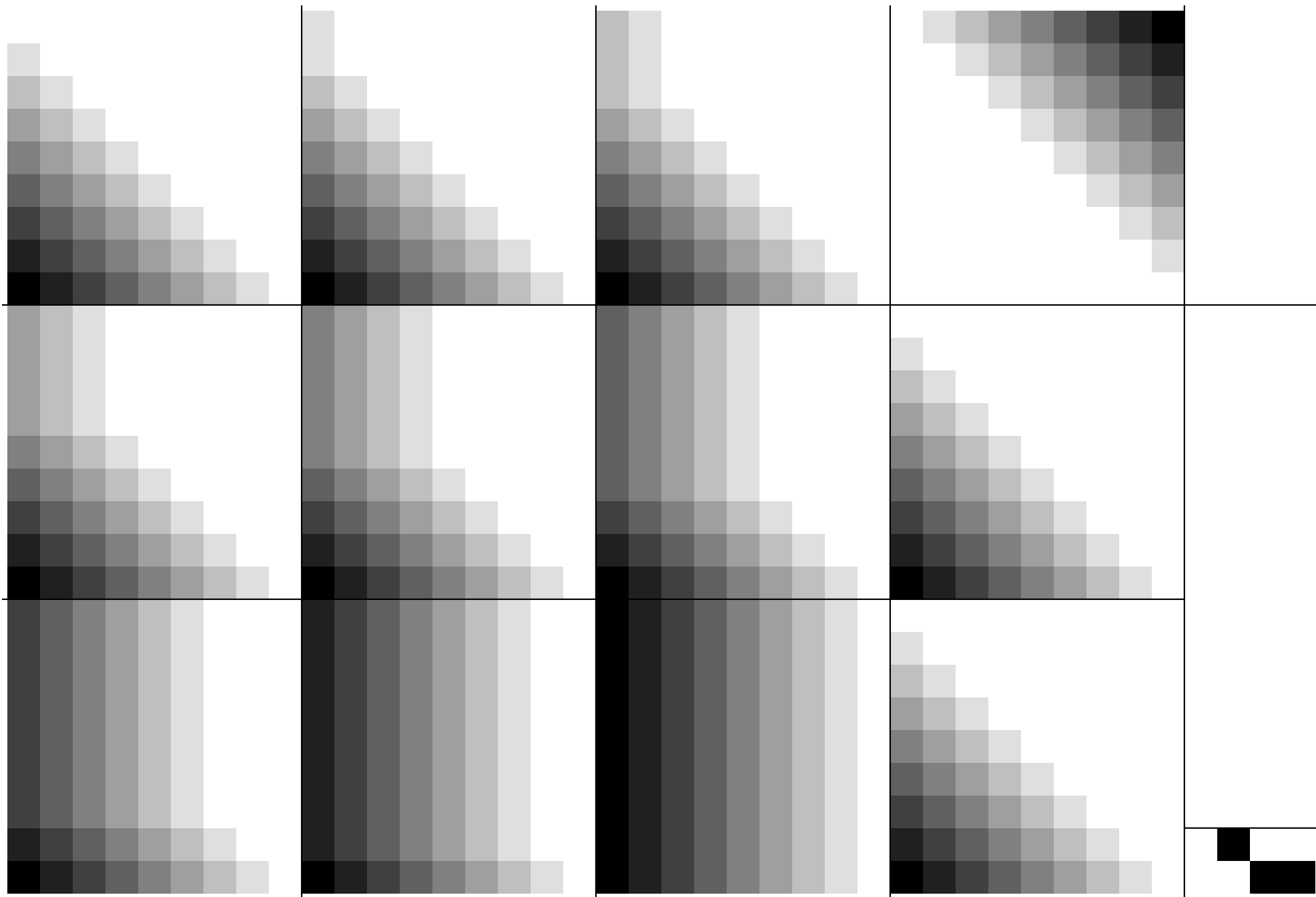
See original or copy: <http://web.me.com/klaus.richter/GE23/GE23L0NA.TXT> /PS
Technical information: <http://www.ps.bam.de> V 2.1, io=1,1, Cx=2; cfl=1.00; nt=0,18; nx=1.0

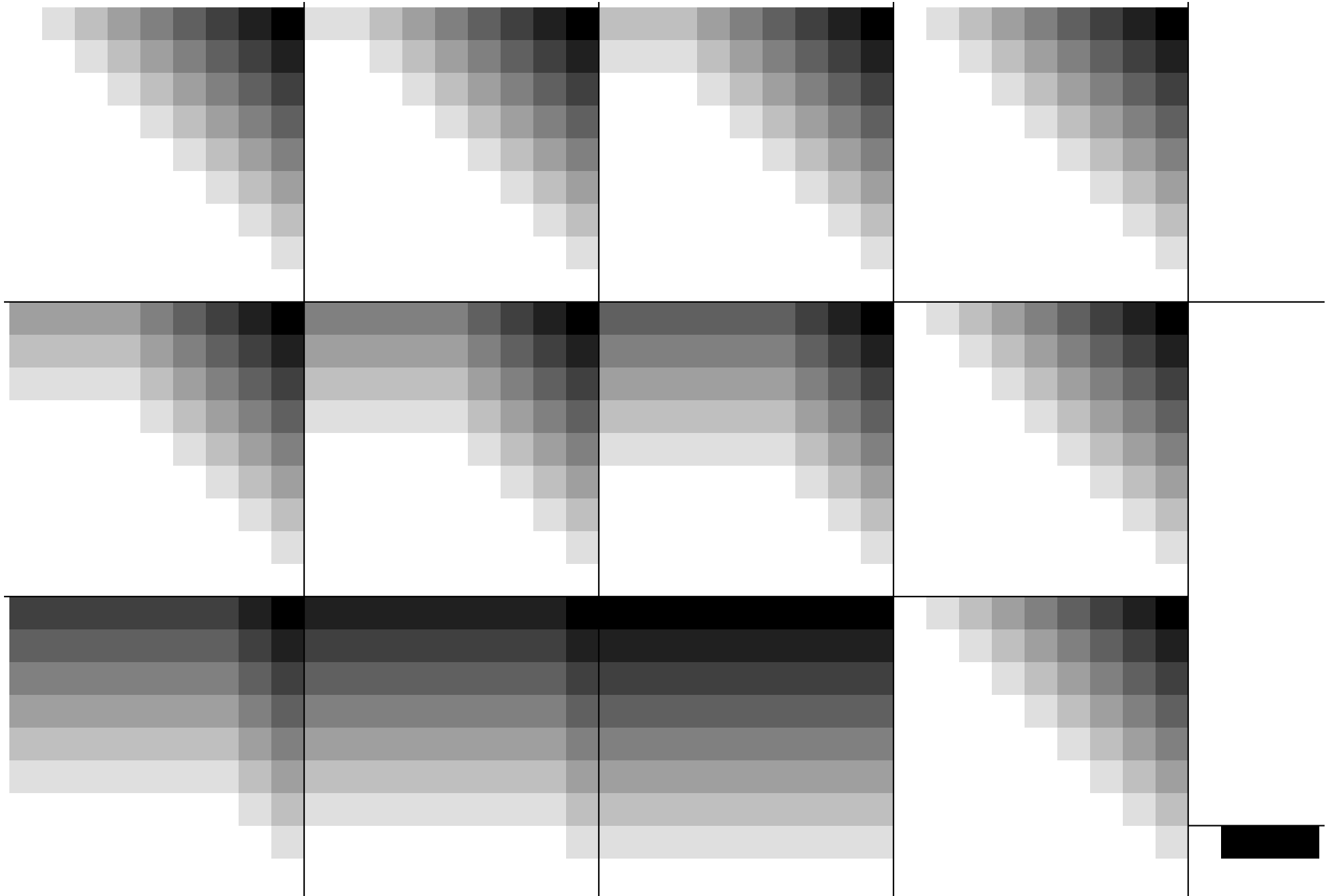
TUB registration: 20091101-GE23/GE23L0NA.TXT /PS application for evaluation and measurement of printer or monitor systems
TUB material: code=rh4ta











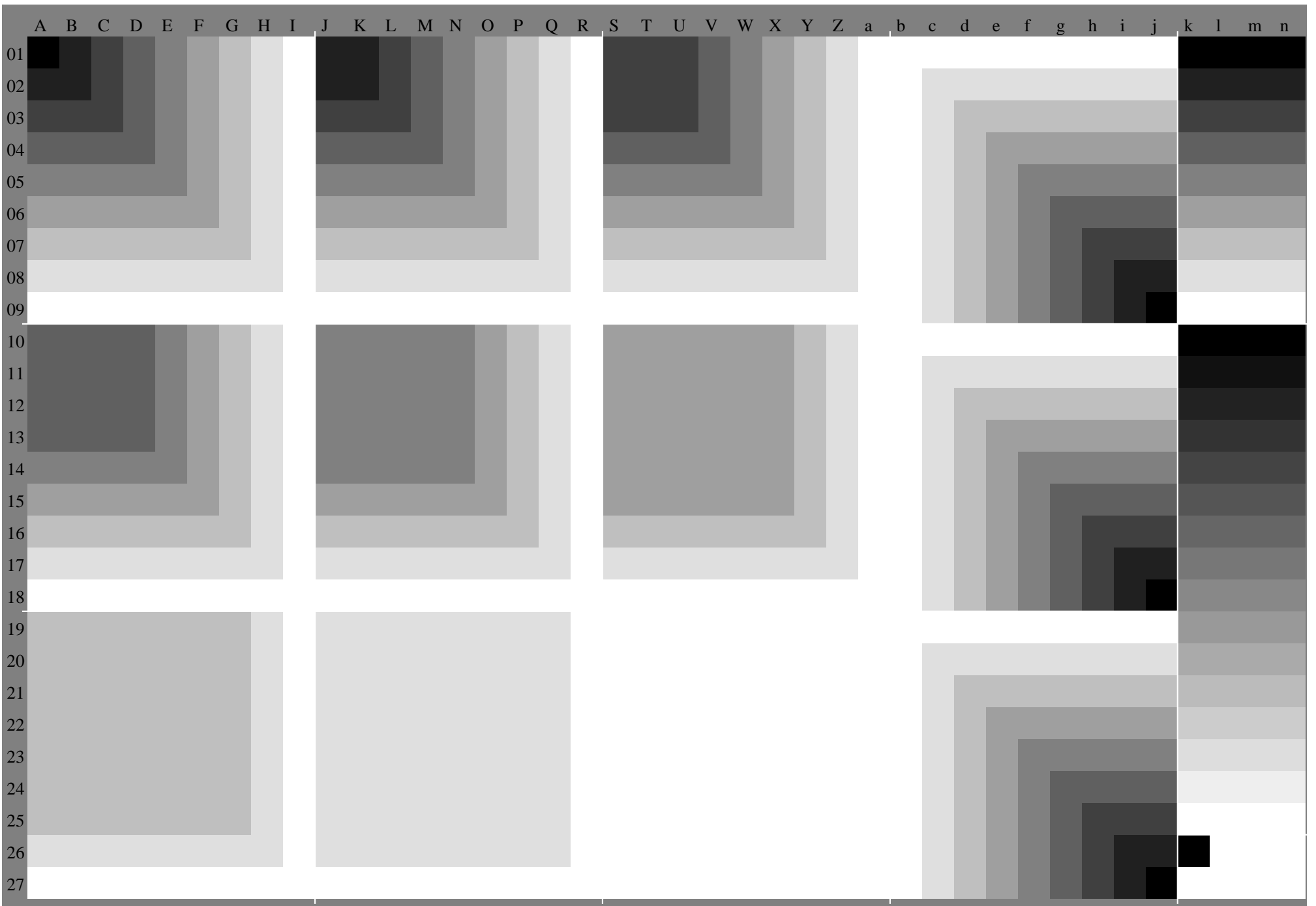


Table with columns labeled A-Z, a-j, lab*olv* and rows numbered 01-27. The data consists of numerical values across 33 columns.

	A	B	C	D	E	F	G	H	I	J	K	L	M	N	O	P	Q	R	S	T	U	V	W	X	Y	Z	a	b	c	d	e	f	g	h	i	j	k	LAB*LAB*a			
01	18.0	22.1	12.6	23.0	33.4	5.38	64.2	74.6	85.0	92.1	82.7	13.0	63.4	6.38	84.2	94.7	0.51	25.5	3.25	5.30	5.36	1.39	2.43	3.147	2.51	1.355	4.59	5.95	4.89	5.83	5.57	7.67	1.765	7.59	8.53	9.47	9.18	0.18	0.18	0.18	
27	40.7	46.8	52.4	58.3	64.2	70.1	76.0	81.9	87.8	93.7	99.6	105.5	111.4	117.3	123.2	129.1	135.0	140.9	146.8	152.7	158.6	164.5	170.4	176.3	182.2	188.1	194.0	200.0	205.9	211.8	217.7	223.6	229.5	235.4	241.3	247.2	253.1	259.0	265.0	271.0	277.0

Table with columns labeled A through lab*olv* and rows numbered 01 through 27. Each cell contains numerical values ranging from 0.0 to 1.0, representing data for various parameters across 27 trials.

Table with 28 columns and 1000 rows of numerical data. Headers include %LAB*a_8bit,CIE, O:122, 212, 193, Y:230, 115, 245, L:130, 48, 173, C:149, 89, 70, V:66, 168, 71, M:123, 224, 117, N:46, 128, 128, W:243, 128, 128. Row headers include %XYZa_8bit,CIE, O:77, 43, Y:175, 197, L:22, 49, C:48, 68, V:18, 12, M:84, 43, N:6, 6, W:215, 226, 246.

Table with 48 columns and 1000 rows of numerical data, representing a 9x9x9 grid with various values ranging from 0 to 255.

% cmyrn'* 8bit, 9x9x9 grid									
0	0	0	0	0	0	0	0	0	0
32	0	0	0	32	32	0	0	0	0
64	0	0	0	64	64	0	0	0	0
96	0	0	0	96	96	0	0	0	0
128	0	0	0	128	128	0	0	0	0
159	0	0	0	159	159	0	0	0	0
191	0	0	0	191	191	0	0	0	0
223	0	0	0	223	223	0	0	0	0
255	0	0	0	255	255	0	0	0	0
0	32	32	0	0	0	32	32	0	0
0	0	0	32	0	0	0	0	32	32
32	0	0	0	32	32	0	0	0	0
64	0	0	0	64	64	0	0	0	0
96	0	0	0	96	96	0	0	0	0
128	0	0	0	128	128	0	0	0	0
159	0	0	0	159	159	0	0	0	0
191	0	0	0	191	191	0	0	0	0
223	0	0	0	223	223	0	0	0	0
0	64	64	0	0	0	64	64	0	0
0	0	32	32	0	0	0	0	32	32
0	0	0	0	64	64	0	0	0	0
32	0	0	0	32	32	0	0	0	0
64	0	0	0	64	64	0	0	0	0
96	0	0	0	96	96	0	0	0	0
128	0	0	0	128	128	0	0	0	0
159	0	0	0	159	159	0	0	0	0
191	0	0	0	191	191	0	0	0	0
0	96	96	0	0	0	96	96	0	0
0	64	64	32	0	0	64	64	32	32
0	32	32	64	0	0	32	32	64	64
0	0	0	0	96	96	0	0	0	0
32	0	0	0	32	32	0	0	0	0
64	0	0	0	64	64	0	0	0	0
96	0	0	0	96	96	0	0	0	0
128	0	0	0	128	128	0	0	0	0
159	0	0	0	159	159	0	0	0	0
0	128	128	0	0	0	128	128	0	0
0	96	96	32	0	0	96	96	32	32
0	64	64	64	0	0	64	64	64	64
0	32	32	96	0	0	32	32	96	96
0	0	0	0	128	128	0	0	0	0
32	0	0	0	32	32	0	0	0	0
64	0	0	0	64	64	0	0	0	0
96	0	0	0	96	96	0	0	0	0
128	0	0	0	128	128	0	0	0	0
0	159	159	0	0	0	159	159	0	0
0	128	128	32	0	0	128	128	32	32
0	96	96	64	0	0	96	96	64	64
0	64	64	96	0	0	64	64	96	96
0	32	32	128	0	0	32	32	128	128
0	0	0	0	159	159	0	0	0	0
32	0	0	0	32	32	0	0	0	0
64	0	0	0	64	64	0	0	0	0
96	0	0	0	96	96	0	0	0	0
0	191	191	0	0	0	191	191	0	0
0	159	159	32	0	0	159	159	32	32
0	128	128	64	0	0	128	128	64	64
0	96	96	96	0	0	96	96	96	96
0	64	64	128	0	0	64	64	128	128
0	32	32	159	0	0	32	32	159	159
0	0	0	0	191	191	0	0	0	0
32	0	0	0	32	32	0	0	0	0
64	0	0	0	64	64	0	0	0	0
0	223	223	0	0	0	223	223	0	0
0	191	191	32	0	0	191	191	32	32
0	159	159	64	0	0	159	159	64	64
0	128	128	96	0	0	128	128	96	96
0	96	96	128	0	0	96	96	128	128
0	64	64	159	0	0	64	64	159	159
0	32	32	191	0	0	32	32	191	191
0	0	0	223	0	0	0	0	223	223
32	0	0	223	32	32	0	32	0	223
0	255	255	0	0	0	255	255	0	0
0	223	223	32	0	0	223	223	32	32
0	191	191	64	0	0	191	191	64	64
0	159	159	96	0	0	159	159	96	96
0	128	128	128	0	0	128	128	128	128
0	96	96	159	0	0	96	96	159	159
0	64	64	191	0	0	64	64	191	191
0	32	32	223	0	0	32	32	223	223
0	0	0	255	0	0	0	0	255	255