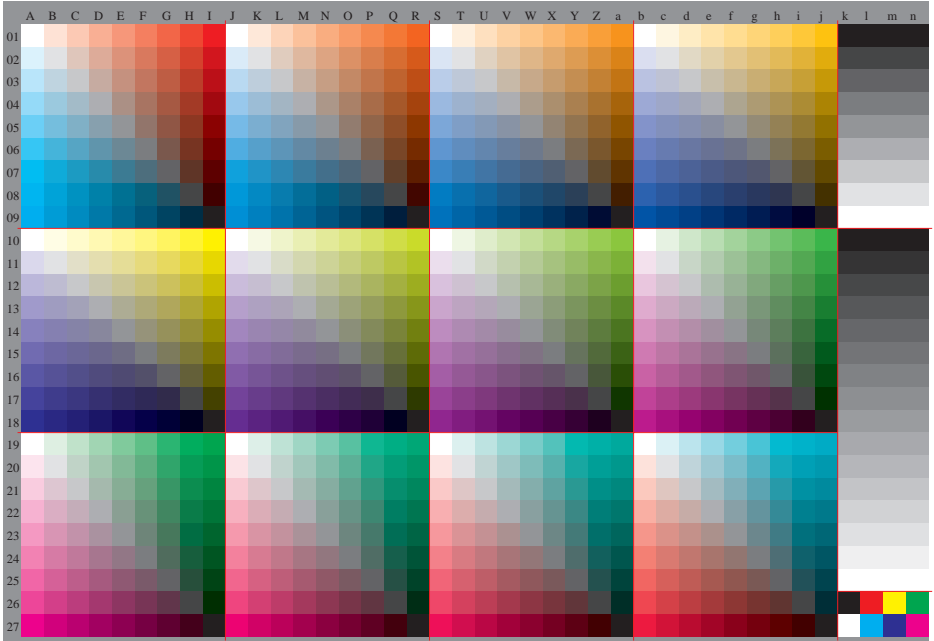


See original or copy: [http://web.me.com/Klaus\\_richter/GE44/GE44LON2.TXT](http://web.me.com/Klaus_richter/GE44/GE44LON2.TXT) /PS  
Technical information: <http://www.ps.bam.de> V 2.1, to=1.1, Cx=3, cFl=0.90; nt=0.18; nx=1.0



TUB registration: 20091101-GE44/GE44LON2.TXT /PS  
application for evaluation and measurement of printer or monitor systems  
TUB material: code=rhata