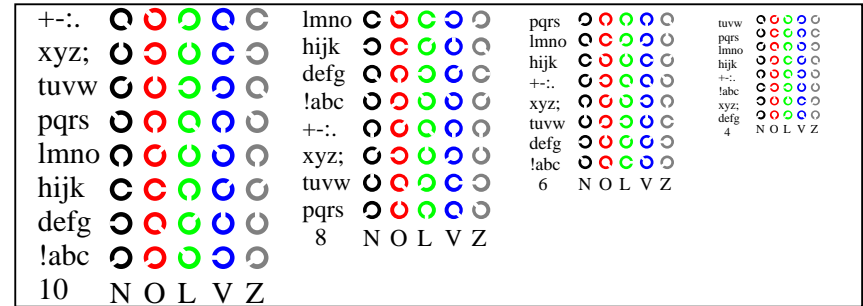
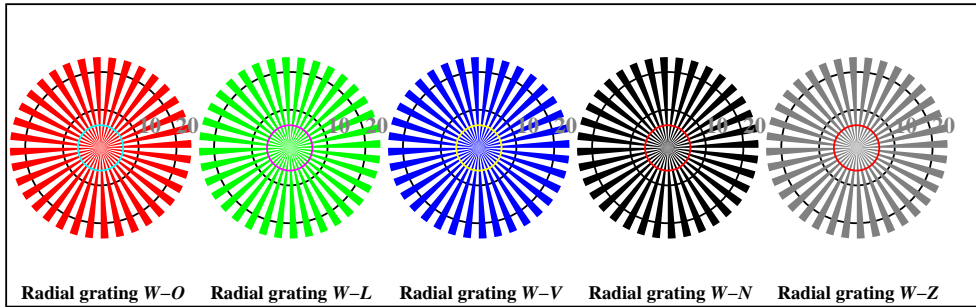


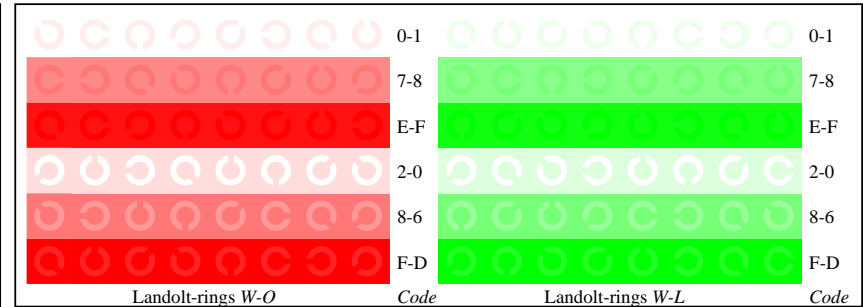
IE861-1, Picture D4: 16 equidistant steps $W-O$, $W-L$, $W-V$, $W-N$; PS operator $olv^* setrgbcolor$



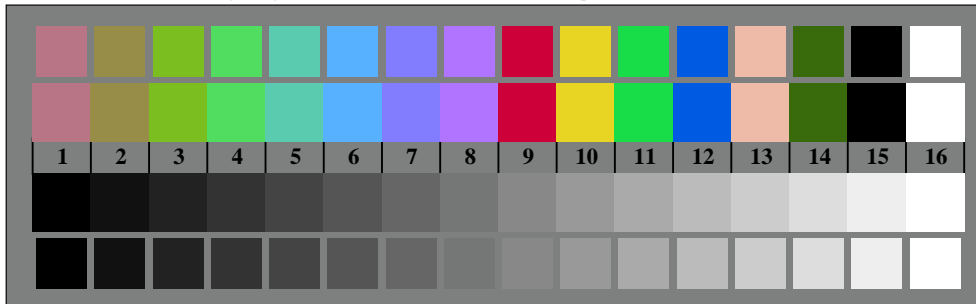
IE861-3, Picture D5: Script and Landolt-rings N , O , L , V , Z ; PS operator $olv^* setrgbcolor$



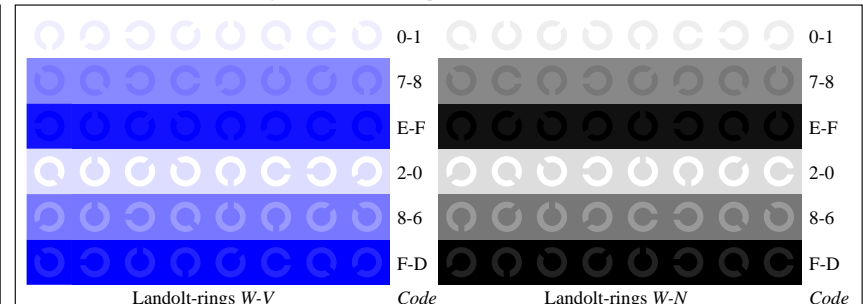
IE861-5, Picture D2: Radial gratings $W-O$, $W-L$, $W-V$, $W-N$, $W-Z$; PS operator $olv^* setrgbcolor$



IE861-5, Picture D6: Landolt-rings $W-O$, $W-L$; PS operator $olv^* setrgbcolor$



IE860-7, Picture D3: 14 CIE-test colours and 2 + 16 grey steps; Use of PS operator $olv^* setrgbcolor$



IE861-7, Picture D7: Landolt-rings $W-V$, $W-N$; PS operator $olv^* setrgbcolor$