



IE860-3, Picture B1: Flower motif, 14 CIE-test colours, 16 grey steps (nf); PS operators *settransfer*, 4 *colorimage*



Radial grating W-R Radial grating W-G Radial grating W-B Radial grating W-N Radial grating W-Z

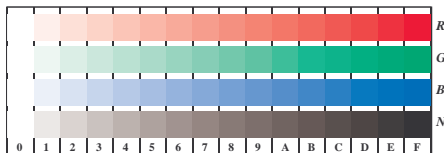
IE861-5, Picture D2: Radial gratings W-R, W-G, W-B, W-N, W-Z; PS operator *rgb* setrgbcolor*



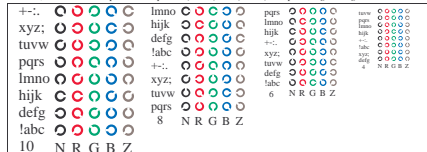
IE860-7, Picture D3: 14 CIE-test colours and 2 + 16 grey steps; Use of PS operator *ohv* setrgbcolor*

IE86; Test chart of ISO/IEC 15775 and ISO/IEC TR 24705

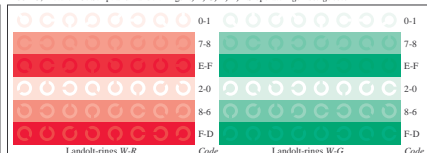
Fig. D1 to D7 similar ISO/IEC-test chart 4, *rgb** interpretation



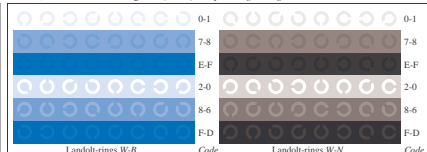
IE861-1, Picture D4: 16 equidistant steps W-R, W-G, W-B, W-N; PS operator *rgb* setrgbcolor*



IE861-3, Picture D5: Script and Landolt-rings N, R, G, B, Z; PS operator *rgb* setrgbcolor*



IE861-5, Picture D6: Landolt-rings W-R, W-G; PS operator *rgb* setrgbcolor*



IE861-7, Picture D7: Landolt-rings W-B, W-N; PS operator *rgb* setrgbcolor*

input: *rgb*->*rgb* setrgbcolor*

output: *rgb**->*cmy0* setcmyk*

See original or copy: http://web.me.com/klaus_richter/IE86/IE86L0N1.PS /TXT
 Technical information: <http://www.ps.bam.de> or <http://130.149.60.45/~farbmetrik>

TUB registration: 20090901-IE86/IE86L0N1.PS /TXT
 application for measurement of printer or monitor systems

TUB material: code=rhata