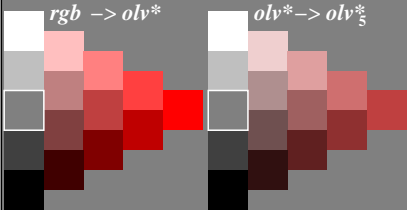


Farbmetrische Transformation $i = 5$

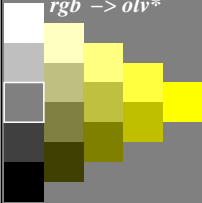
$$c_i^* = c_5^* = a c^{*b} \text{ mit } a = 0,50; b = 1,00$$



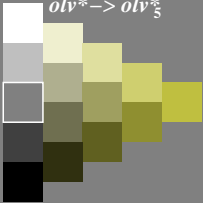
Farbmetrische Transformation $i = 5$

$$c_i^* = c_5^* = a c^{*b} \text{ mit } a = 0,50; b = 1,00$$

rgb \rightarrow *olv**

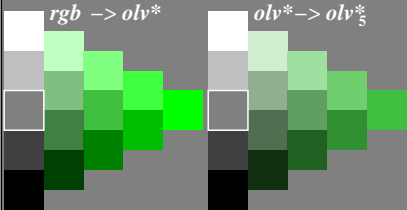


*olv** \rightarrow *olv*_5*



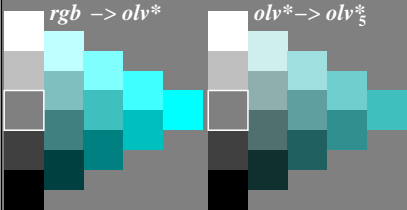
Farbmetrische Transformation $i = 5$

$$c_i^* = c_5^* = a c^{*b} \text{ mit } a = 0,50; b = 1,00$$



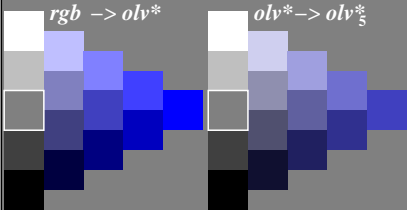
Farbmetrische Transformation $i = 5$

$$c_i^* = c_5^* = a c^{*b} \text{ mit } a = 0,50; b = 1,00$$



Farbmetrische Transformation $i = 5$

$$c_i^* = c_5^* = a c^{*b} \text{ mit } a = 0,50; b = 1,00$$



Farbmetrische Transformation $i = 5$

$$c_i^* = c_5^* = a c^{*b} \text{ mit } a = 0,50; b = 1,00$$

