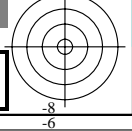
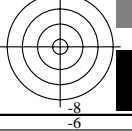
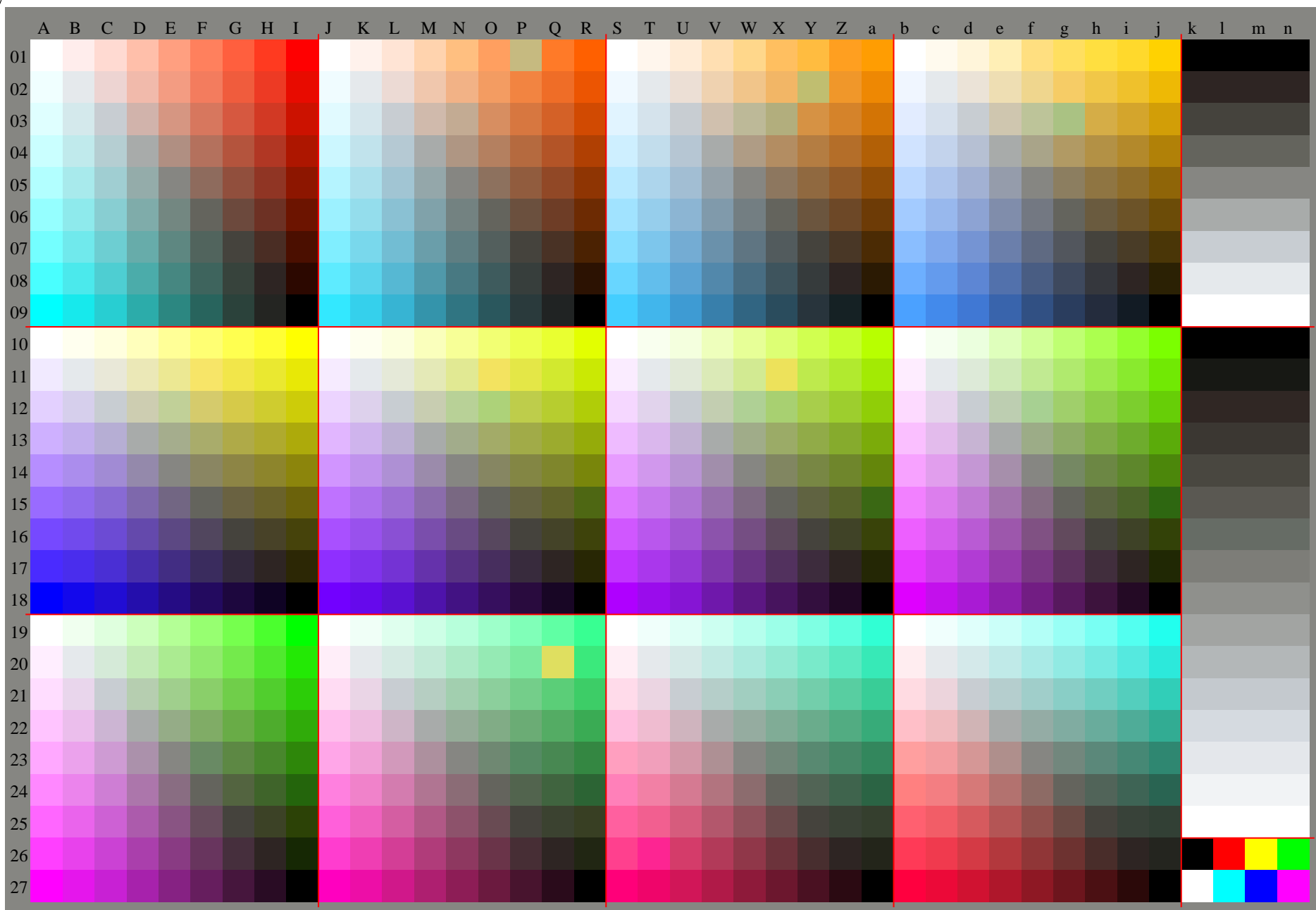


See original or copy: <http://web.me.com/klaus.richter/JE17/JE17L0FP.PDF> /.PS
Technical information: <http://www.ps.bam.de> V 2.1, io=1,, Cx=0; cfl=1.00; nt=0.18; nx=1.0

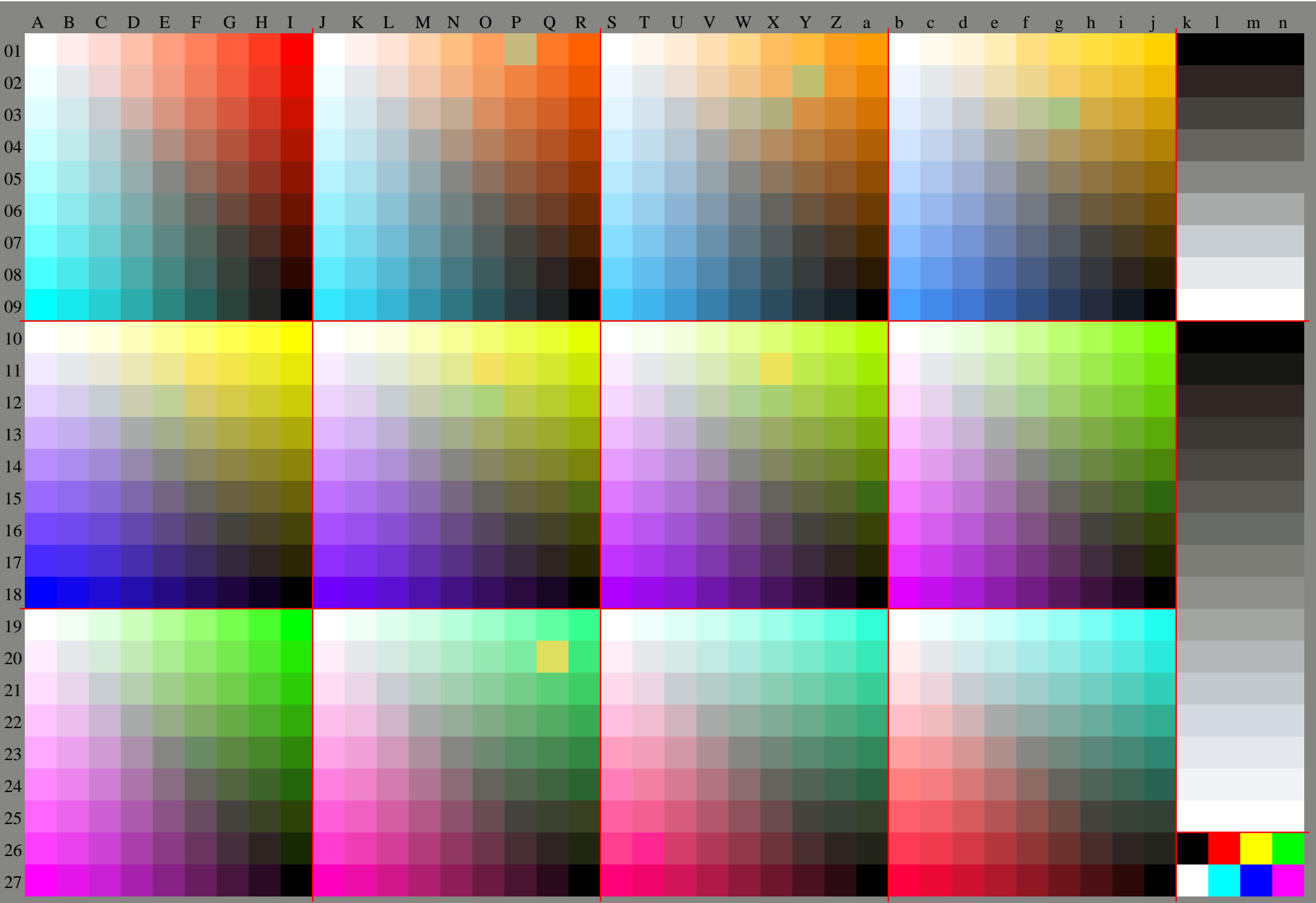
TUB registration: 20100101-JE17/JE17L0FP.PDF /.PS
application for evaluation and measurement of printer or monitor systems, Yr=2.5, XYZ
TUB material: code=rh4ta

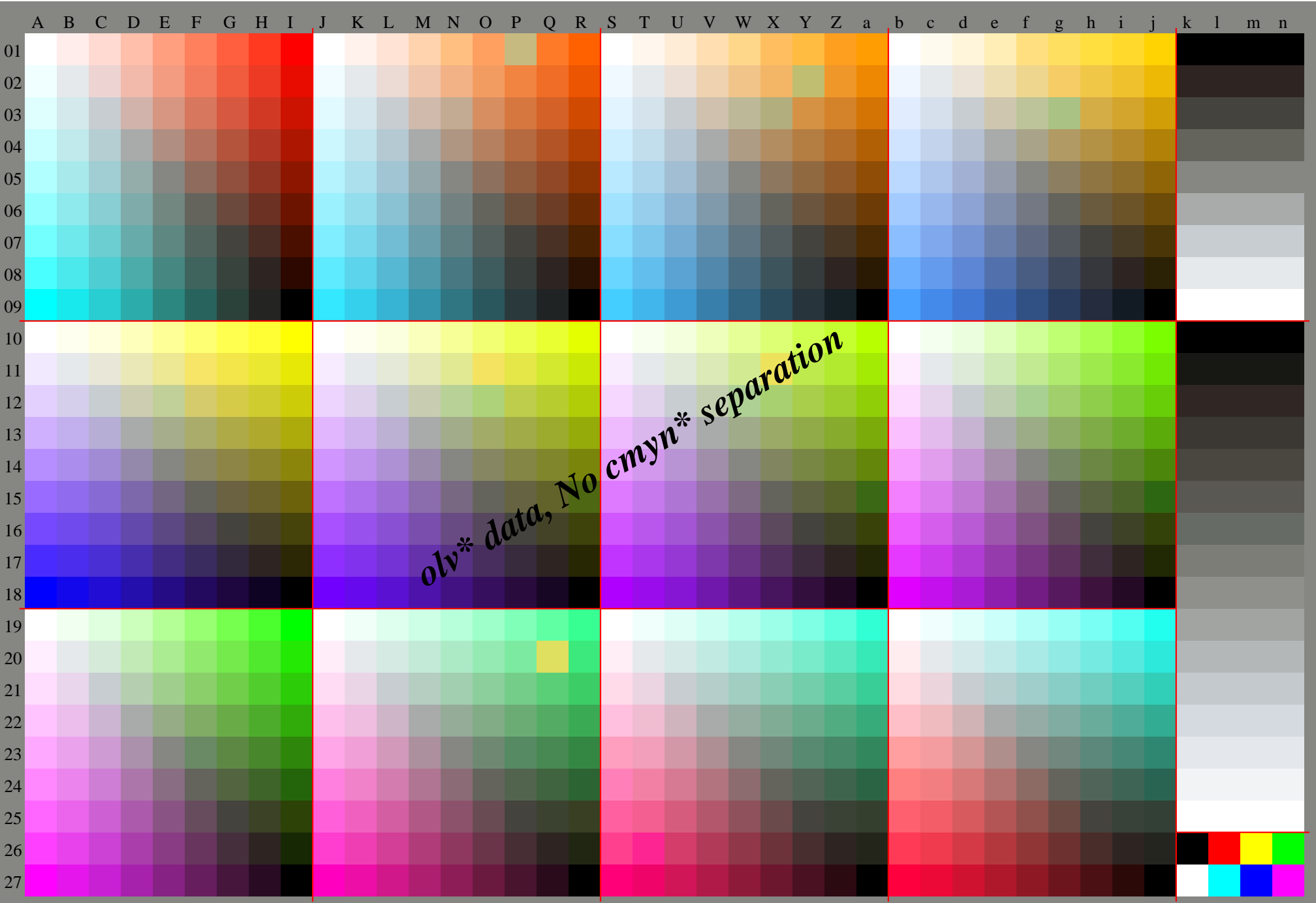


See original or copy: <http://web.me.com/klaus.richter/IE17/IE17L0FP.PDF> /.PS
Technical information: <http://www.ps.bam.de> V 2.1, io=1, Cx=0; cfl=1.00; nt=0.18; nx=1.0



TUB registration: 20100101-JE17/IE17L0FP.PDF /.PS
application for evaluation and measurement of printer or monitor systems, Yr=2.5, XYZ
TUB material: code=rh4ta





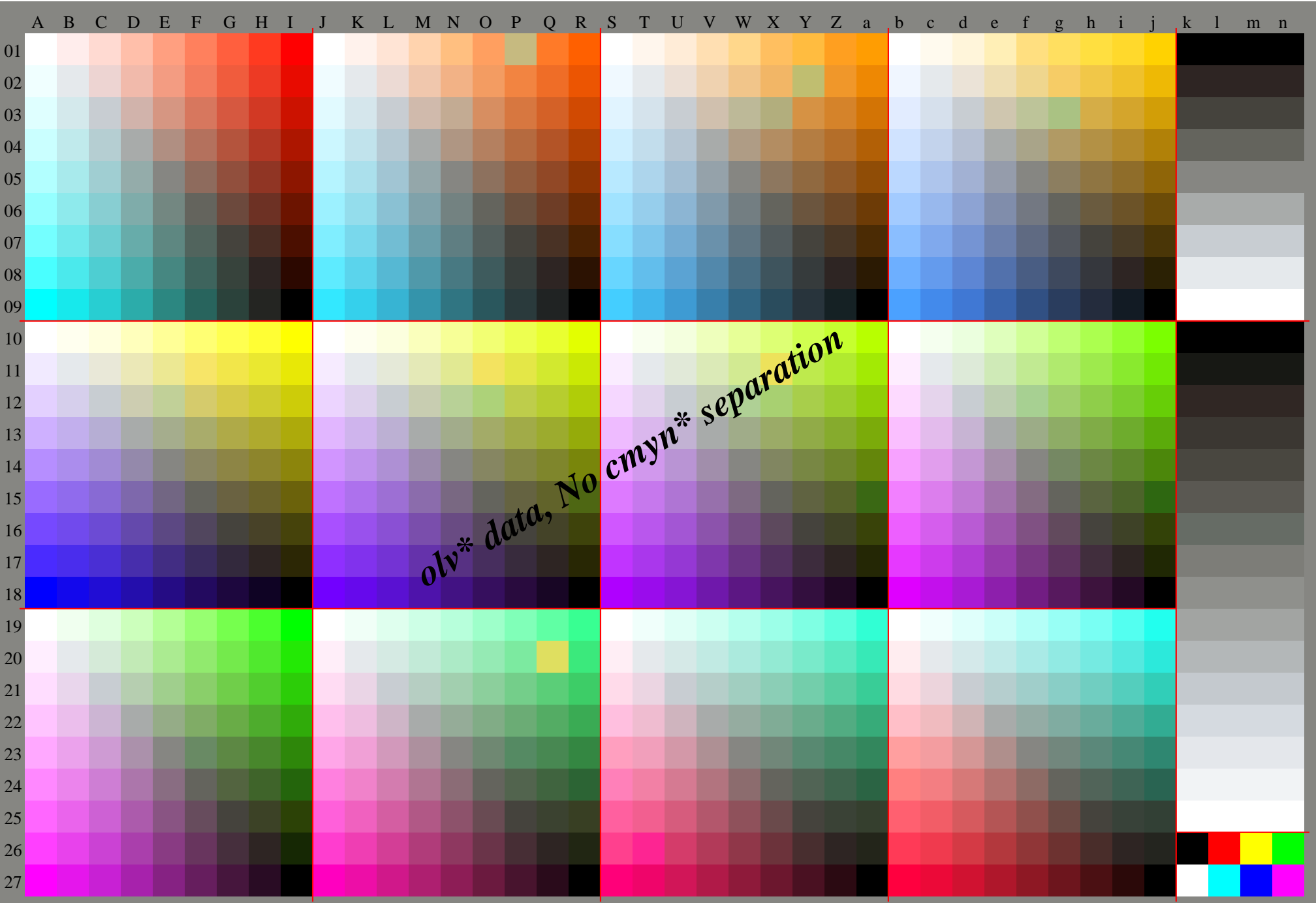






Table with columns A through a and rows 01 through 27. Each cell contains numerical data. The columns are labeled 'LAB*LCH*a' and the rows are labeled with numbers 01-27.

A B C D E F G H I J K L M N O P Q R S T U V W X Y Z a b c d e f g h i j k lab*olv**

Table with 27 rows and 28 columns. Each cell contains a numerical value, likely representing a measurement or data point for a specific row and column combination. The values are generally small, ranging from 0.0 to 1.0, with some variations in the decimal places.

Table with 27 columns and 100 rows of numerical data, organized in a 9x9x9 grid format. The values range from 0 to 255, with many cells containing the value 0.

% cmyk '* 8bit, 9x9x9 grid									
0	0	0	0	0	0	0	0	0	0
15	0	0	0	14	21	0	0	0	0
32	0	0	0	28	47	0	0	0	0
53	0	0	0	49	79	0	0	0	0
77	0	0	0	73	114	0	0	0	0
105	0	0	0	102	148	0	0	0	0
139	0	0	0	137	182	0	0	0	0
182	0	0	0	181	212	0	0	0	0
255	0	0	0	255	255	0	0	0	0
0	18	19	0	0	0	16	0	15	0
26	22	19	0	26	22	19	0	26	22
43	22	19	0	41	48	19	0	42	25
63	22	19	0	61	80	18	0	62	28
87	21	19	0	84	114	18	0	84	31
113	21	19	0	111	149	18	0	107	34
143	22	19	0	142	181	18	0	134	39
180	22	19	0	181	210	18	0	165	43
232	22	19	0	236	247	19	0	202	47
0	37	45	0	0	0	33	0	3	0
18	43	45	0	22	23	39	0	19	37
55	50	45	0	55	50	45	0	55	50
74	49	45	0	73	81	43	0	51	74
95	49	45	0	94	115	43	0	49	100
119	49	45	0	119	149	43	0	49	129
146	49	45	0	147	180	43	0	50	158
177	49	45	0	181	208	43	0	52	189
215	49	45	0	222	242	43	0	55	222
0	64	85	0	0	0	67	0	5	0
14	69	85	0	20	23	72	0	62	21
46	76	84	0	50	50	78	0	73	49
87	84	85	0	87	84	85	0	87	84
107	83	85	0	107	118	84	0	84	110
128	83	85	0	129	151	83	0	83	137
152	83	85	0	154	182	83	0	83	164
180	83	85	0	184	209	83	0	85	192
211	83	85	0	219	241	83	0	88	221
0	96	128	0	0	0	104	0	76	0
12	99	125	0	19	23	108	0	84	20
41	105	125	0	62	47	103	0	95	48
79	112	125	0	90	82	114	0	106	83
121	121	126	0	121	121	126	0	121	121
140	120	126	0	141	153	125	0	118	146
161	120	126	0	163	183	124	0	118	171
185	120	126	0	189	210	124	0	118	196
211	120	126	0	218	243	123	0	121	221
0	127	162	0	0	0	140	0	104	0
12	131	162	0	8	26	151	0	110	21
40	136	162	0	42	52	147	0	117	48
75	142	162	0	86	83	148	0	127	83
113	149	162	0	117	121	157	0	150	117
155	155	162	0	155	155	162	0	155	155
174	155	162	0	174	185	161	0	152	179
193	155	162	0	197	211	161	0	152	202
215	155	162	0	220	245	161	0	153	225
0	160	193	0	0	0	175	0	137	0
15	163	194	0	13	25	181	0	139	21
41	167	191	0	40	53	182	0	143	49
75	171	194	0	80	85	182	0	150	83
110	176	194	0	114	122	186	0	162	119
147	182	194	0	149	157	190	0	172	155
186	188	194	0	186	188	194	0	186	188
200	188	195	0	204	214	194	0	185	208
212	189	196	0	226	248	193	0	185	233
0	197	223	0	0	1	203	0	180	0
18	197	219	0	21	23	207	0	175	22
45	198	219	0	48	51	208	0	174	49
78	200	219	0	80	85	209	0	177	83
111	202	219	0	114	122	211	0	183	120
146	206	219	0	149	157	213	0	192	155
181	210	219	0	183	189	215	0	195	189
209	218	220	0	209	218	220	0	209	218
219	218	221	0	240	252	218	0	214	243
0	255	255	0	0	0	255	0	255	0
23	244	255	0	23	23	249	0	220	22
51	237	255	0	50	51	246	0	211	50
82	233	255	0	82	85	244	0	207	84
114	233	255	0	115	122	243	0	209	120
147	235	255	0	149	157	244	0	219	154
180	240	255	0	185	188	244	0	211	189
211	247	255	0	212	216	250	0	233	215
255	255	255	0	255	255	255	0	255	255

