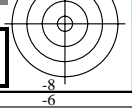
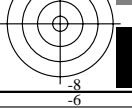
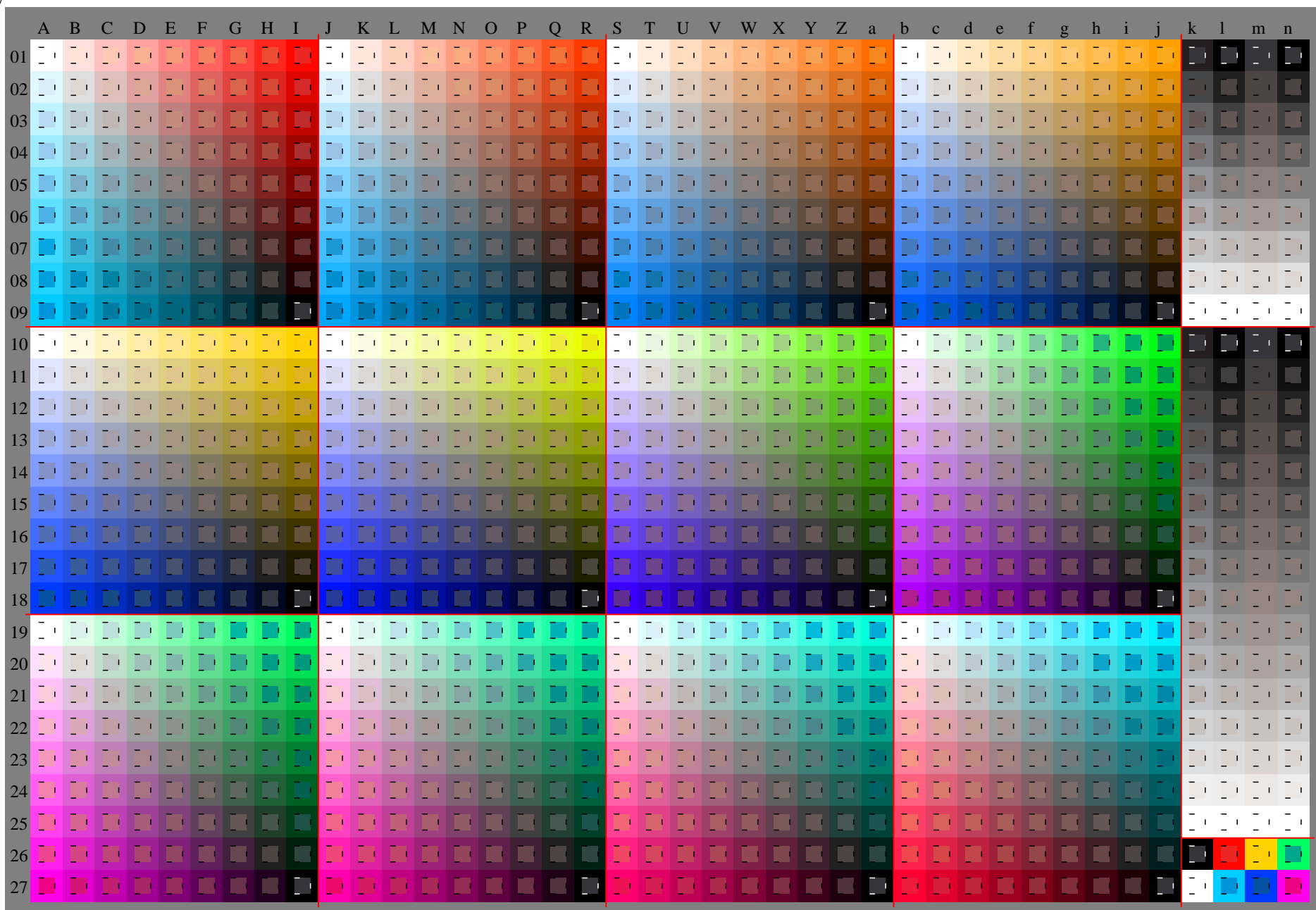
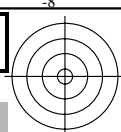
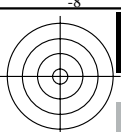


Siehe Original/Kopie: <http://web.me.com/Klaus.richter/JG23/JG23L0FP.PDF> /PS  
Technische Information: [http://www.ps.bam.de/V\\_2.1,io=1,,Cx=0;cfI=1.00;nt=0.18;nx=1.0](http://www.ps.bam.de/V_2.1,io=1,,Cx=0;cfI=1.00;nt=0.18;nx=1.0)

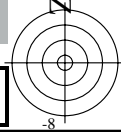
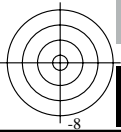
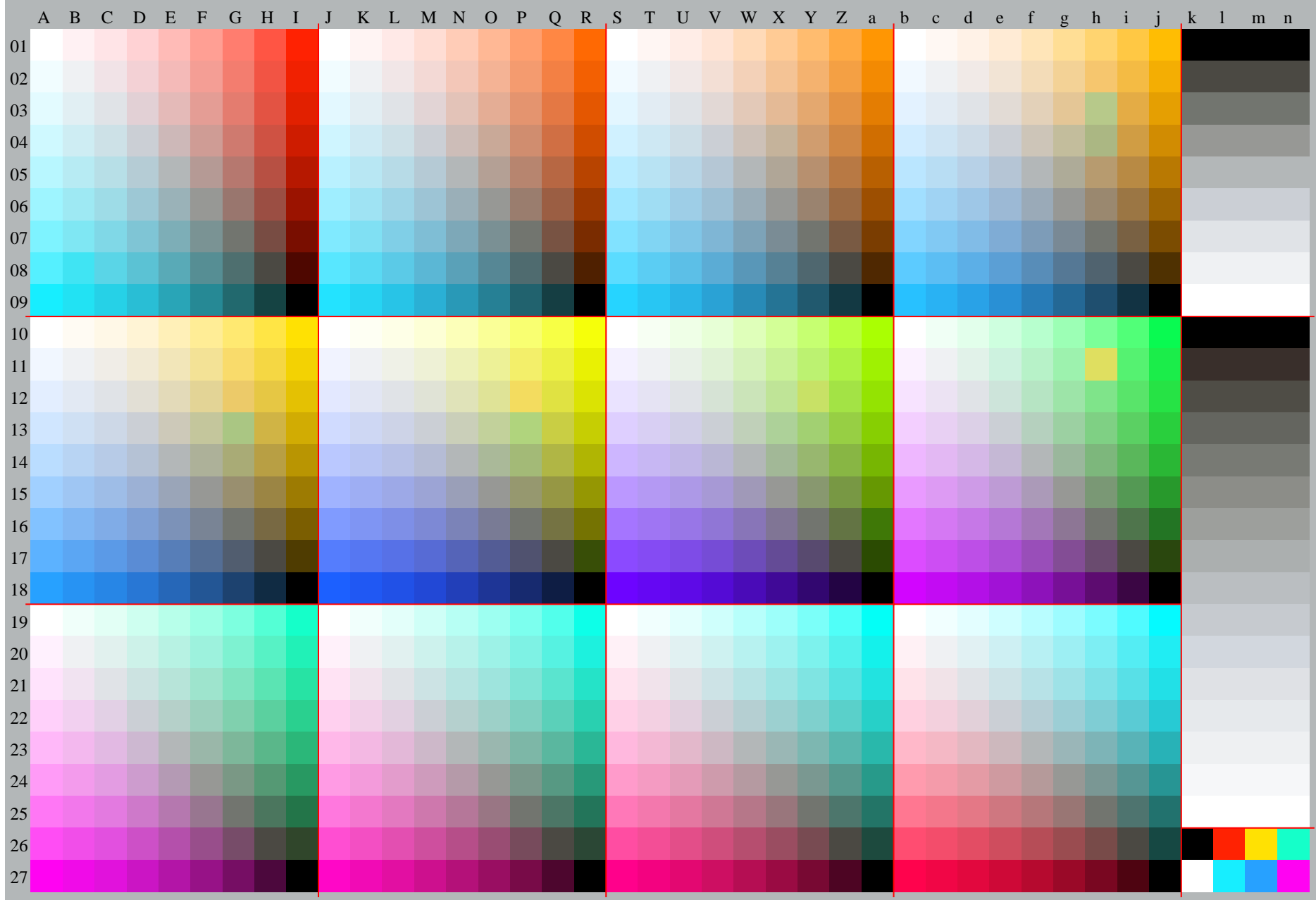
TUB-Registrierung: 201100101-JG23/JG23L0FP.PDF /.PS TUB-Material: Code=rh4ta  
Anwendung für Beurteilung und Messung von Drucker- oder Monitorsystemen, Yr=2.5, XYZ

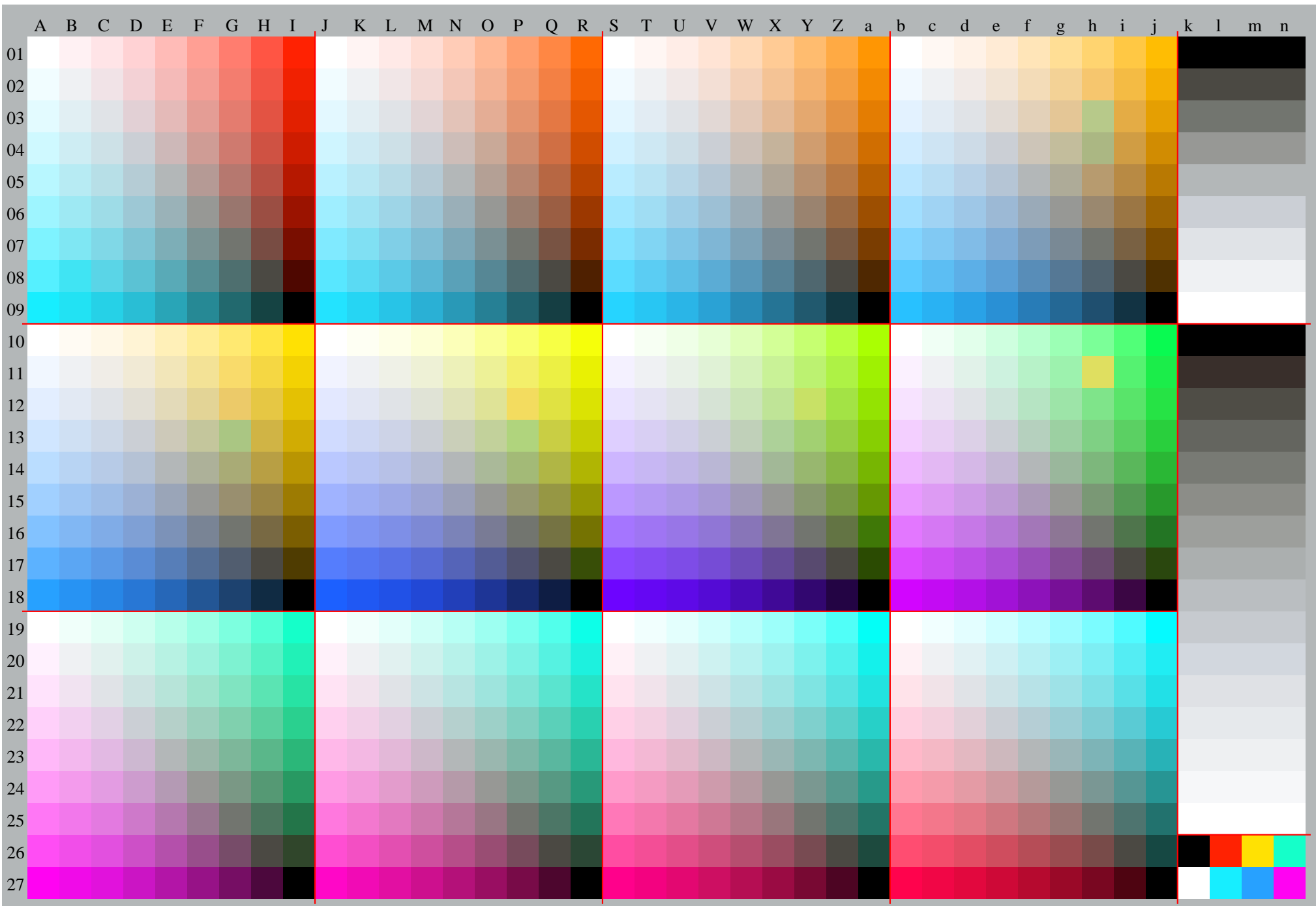




Siehe Original/Kopie: <http://web.me.com/Klaus.richter/JG23/JG23L0FP.PDF> /.PS  
Technische Information: [http://www.ps.bam.de/V\\_2.1,io=1,,Cx=0;cfI=1.00;nt=0,18;nx=1.0](http://www.ps.bam.de/V_2.1,io=1,,Cx=0;cfI=1.00;nt=0,18;nx=1.0)

TUB-Registrierung: 20100101-JG23/JG23L0FP.PDF /.PS TUB-Material: Code=rh4ta  
Anwendung für Beurteilung und Messung von Drucker- oder Monitorsystemen, Yr=2.5, XYZ









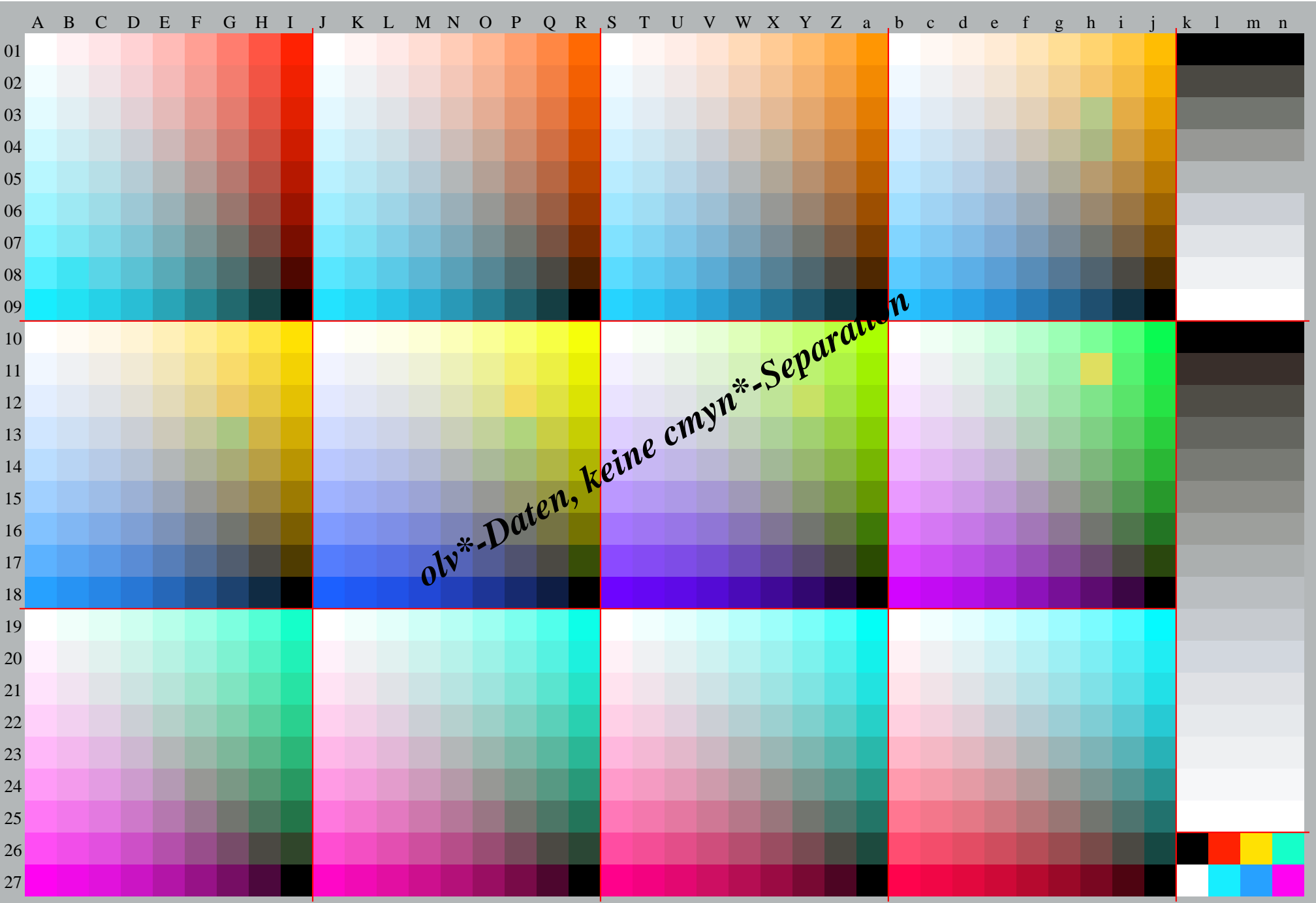




Table with 27 rows (01-27) and 26 columns (A-lab\*olv\*). Each cell contains numerical data, likely representing measurements or coordinates. The table is divided into sections by horizontal red lines.









A B C D E F G H I J K L M N O P Q R S T U V W X Y Z a b c d e f g h i j k lab\*tch\*

Table with 28 rows and 28 columns. Each cell contains numerical data. Row and column indices are labeled on the left and top respectively. The table contains a large grid of numerical values, likely representing a dataset or matrix.

Table with 27 rows and 27 columns. Row and column headers are labeled with letters A-Z and a-e. The cells contain numerical data, likely representing a matrix or a grid of values. The table is divided into four horizontal sections by red lines, each containing 7 rows.









Table with 25 columns and 100 rows of numerical data. Each row contains a sequence of 25 integers, with values ranging from 0 to 255. The data is organized in a grid-like structure with vertical and horizontal lines separating the columns.







%LAB*a,ICC	O:80.1	27.0	11.5	Y:98.5	-11.7	39.4	L:93.8	-37.8	31.6	C:95.4	-23.0	-7.6	V:75.5	16.9	-39.5	M:82.1	39.3	-28.3	N:73.1	0.0	0.0	W:100.0	0.0	0.0
%XYZa,ICC	O:65.2	56.8	49.8	Y:85.1	96.3	53.8	L:62.8	84.8	53.3	C:72.6	88.5	108.3	V:53.0	49.1	104.6	M:75.1	60.5	104.9	N:43.1	45.4	49.4	W:95.1	100.0	108.9













Table with 25 columns and 25 rows of numerical data, representing a 9x9x9 grid. Each row and column contains 25 values ranging from 0 to 255.





