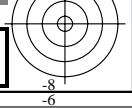
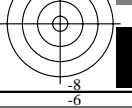
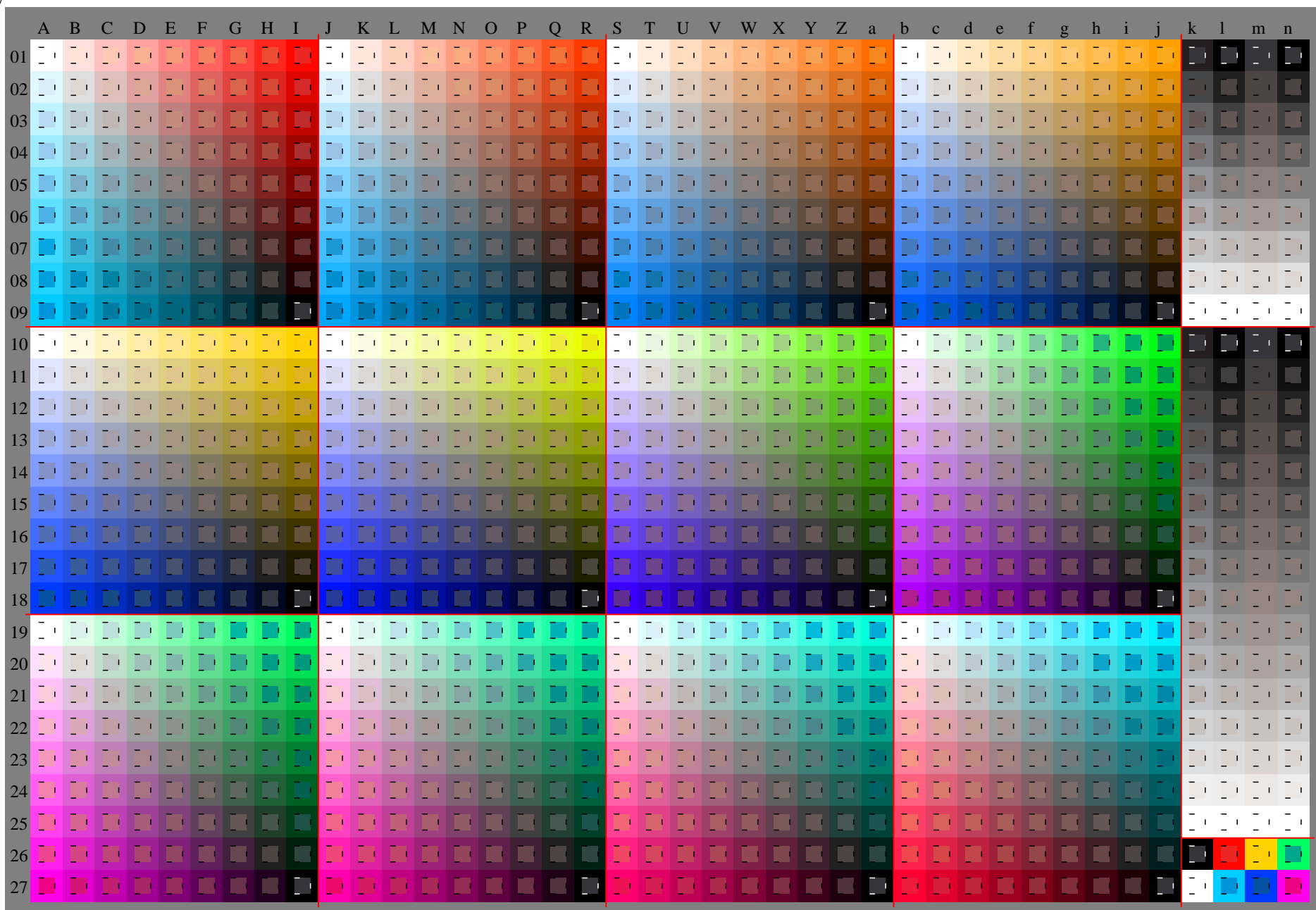
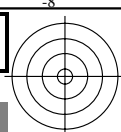
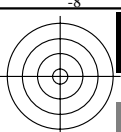


Siehe Original/Kopie: <http://web.me.com/klaus.richter/JG23/JG23L0NA.TXT> /.PS
Technische Information: http://www.ps.bam.de/V_2.1,io=1.1,Cx=0; cfl=1.00; nt=0.18; nx=1.0

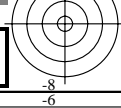
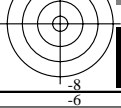
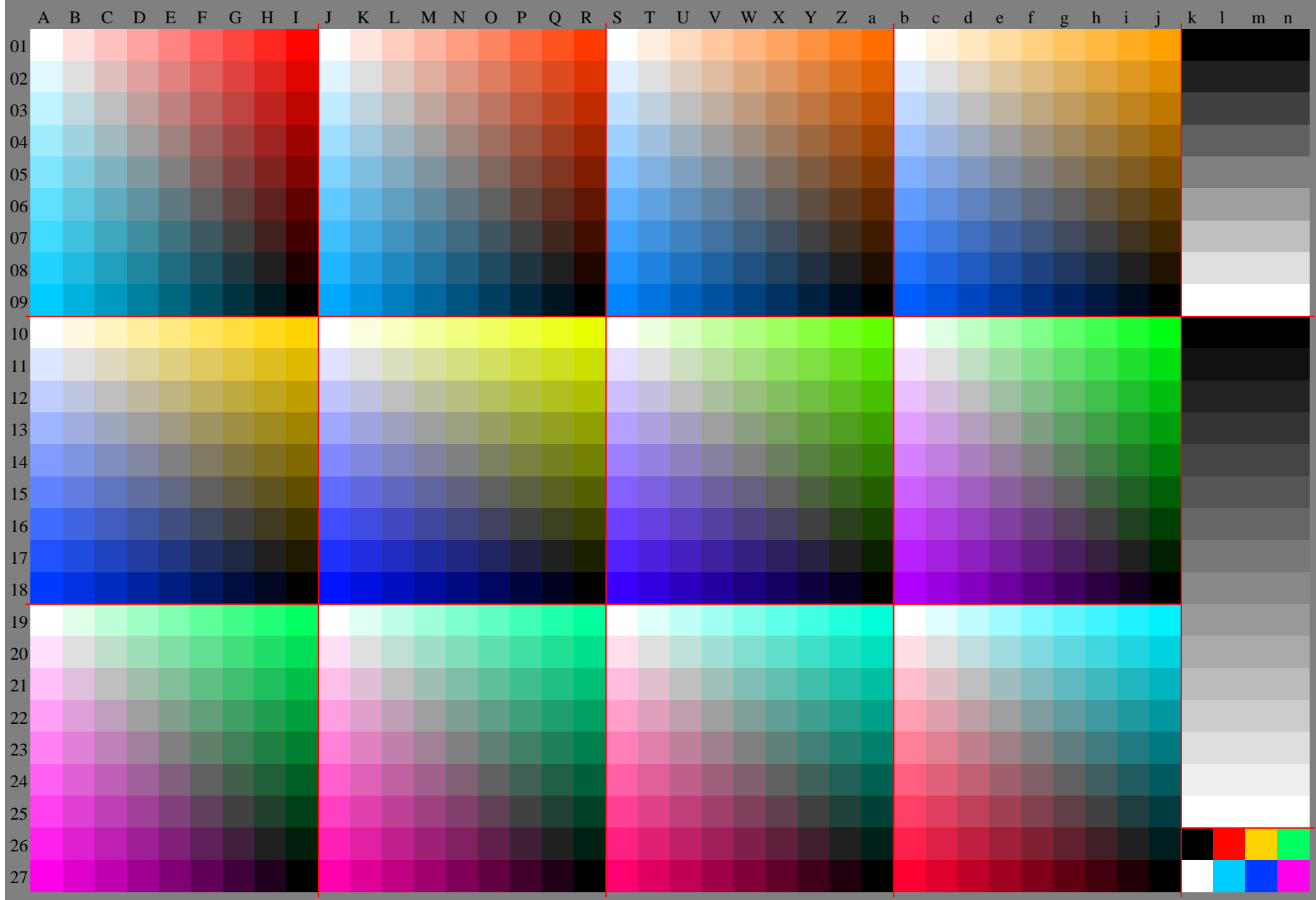
TUB-Registrierung: 201100101-JG23/JG23L0NA.TXT /.PS TUB-Material: Code=rh4ta
Anwendung für Beurteilung und Messung von Drucker- oder Monitorsystemen

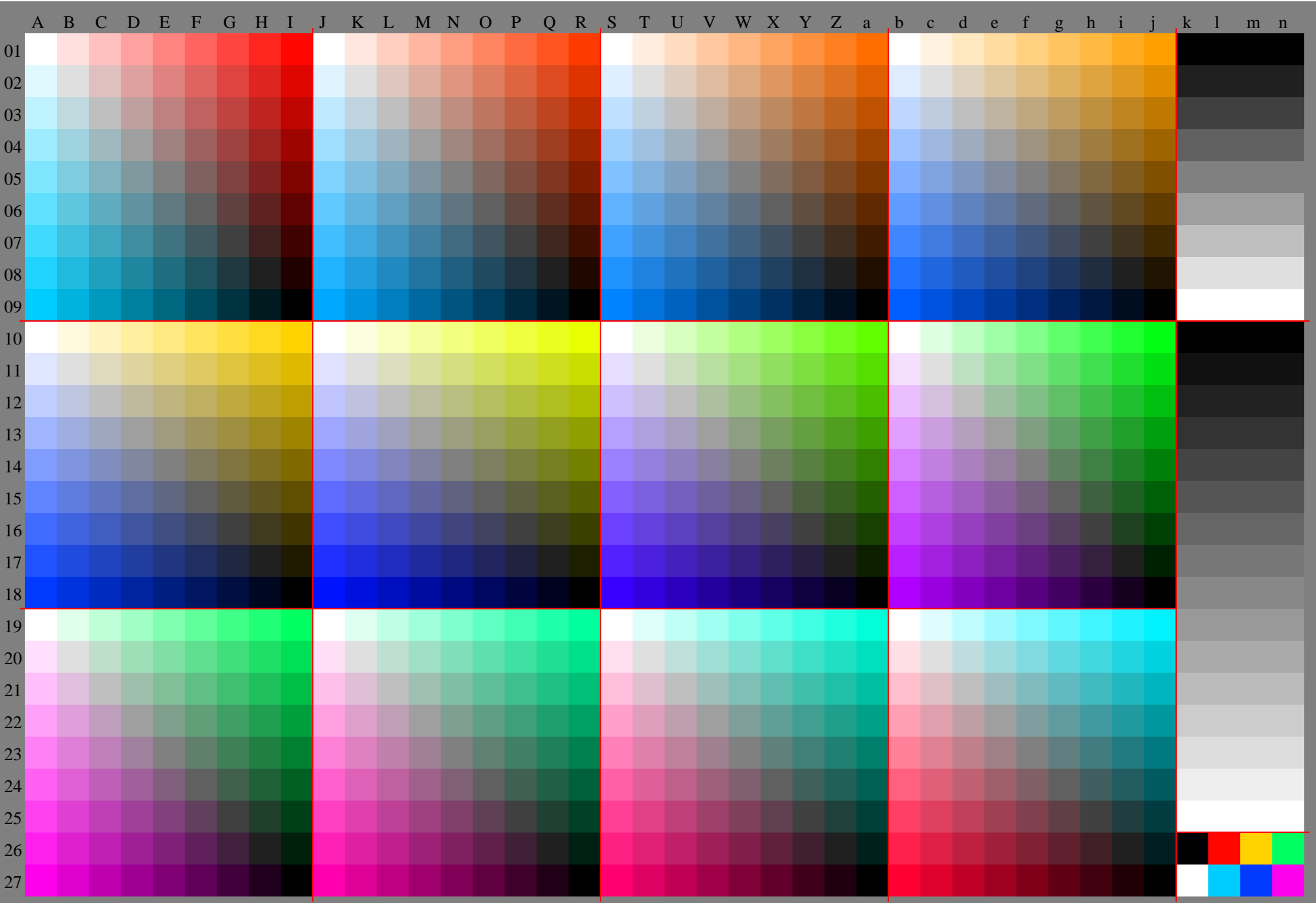


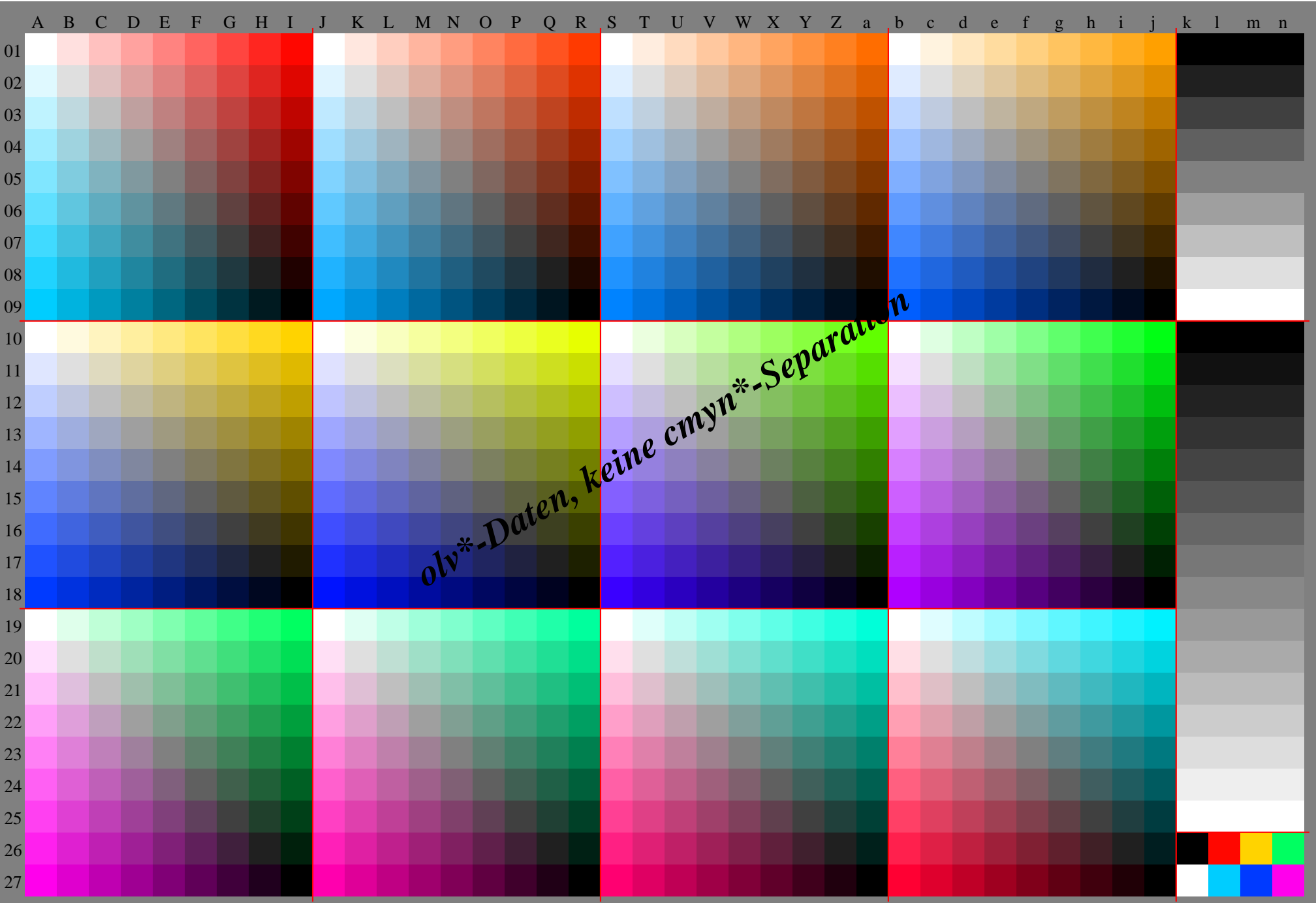


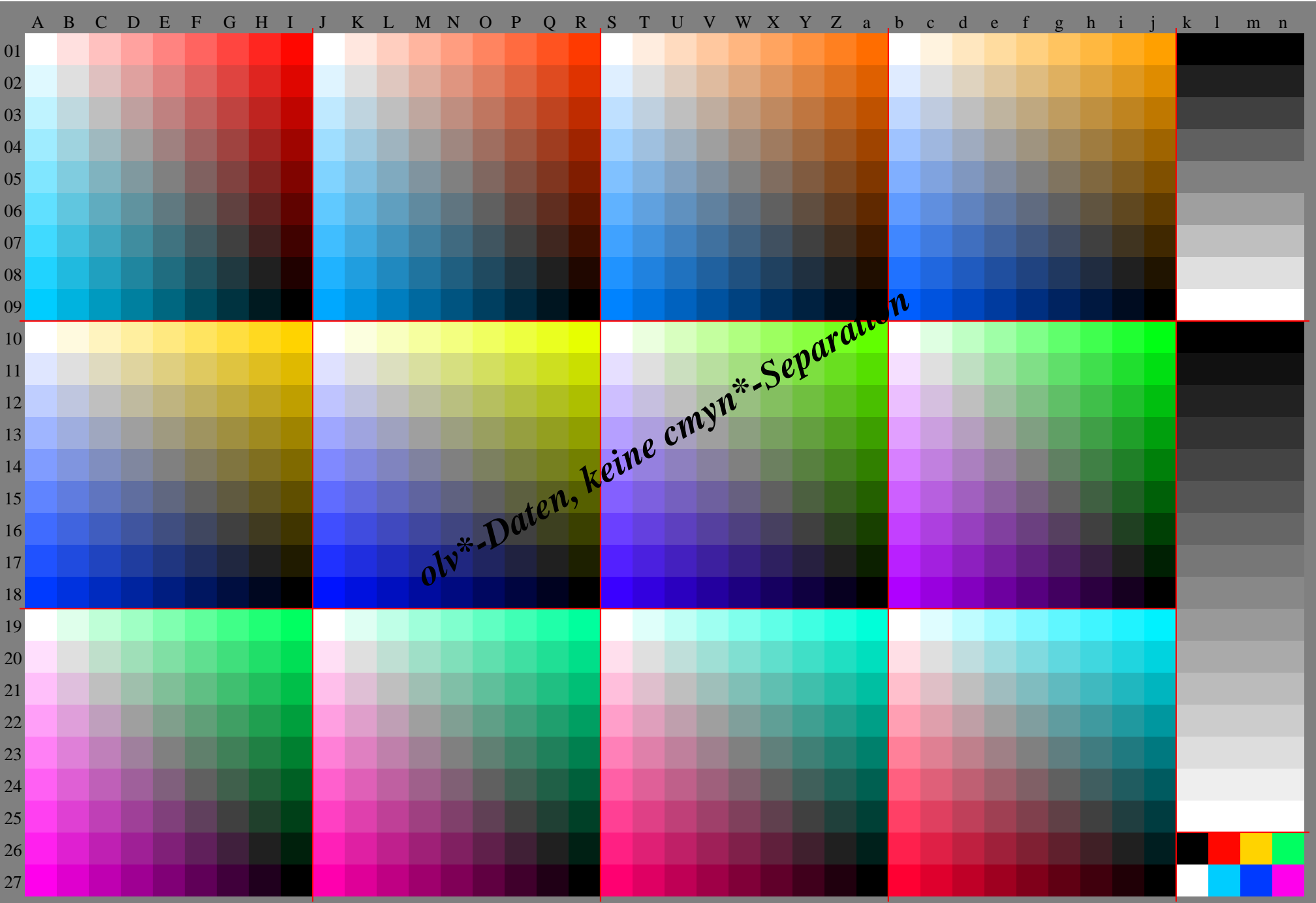
Siehe Original/Kopie: <http://web.me.com/Klaus.richter/JG23/JG23L0NA.TXT> /.PS
Technische Information: http://www.ps.bam.de/V_2.1, io=1,1, Cx=0; cfl=1.00; nt=0,18; nx=1.0

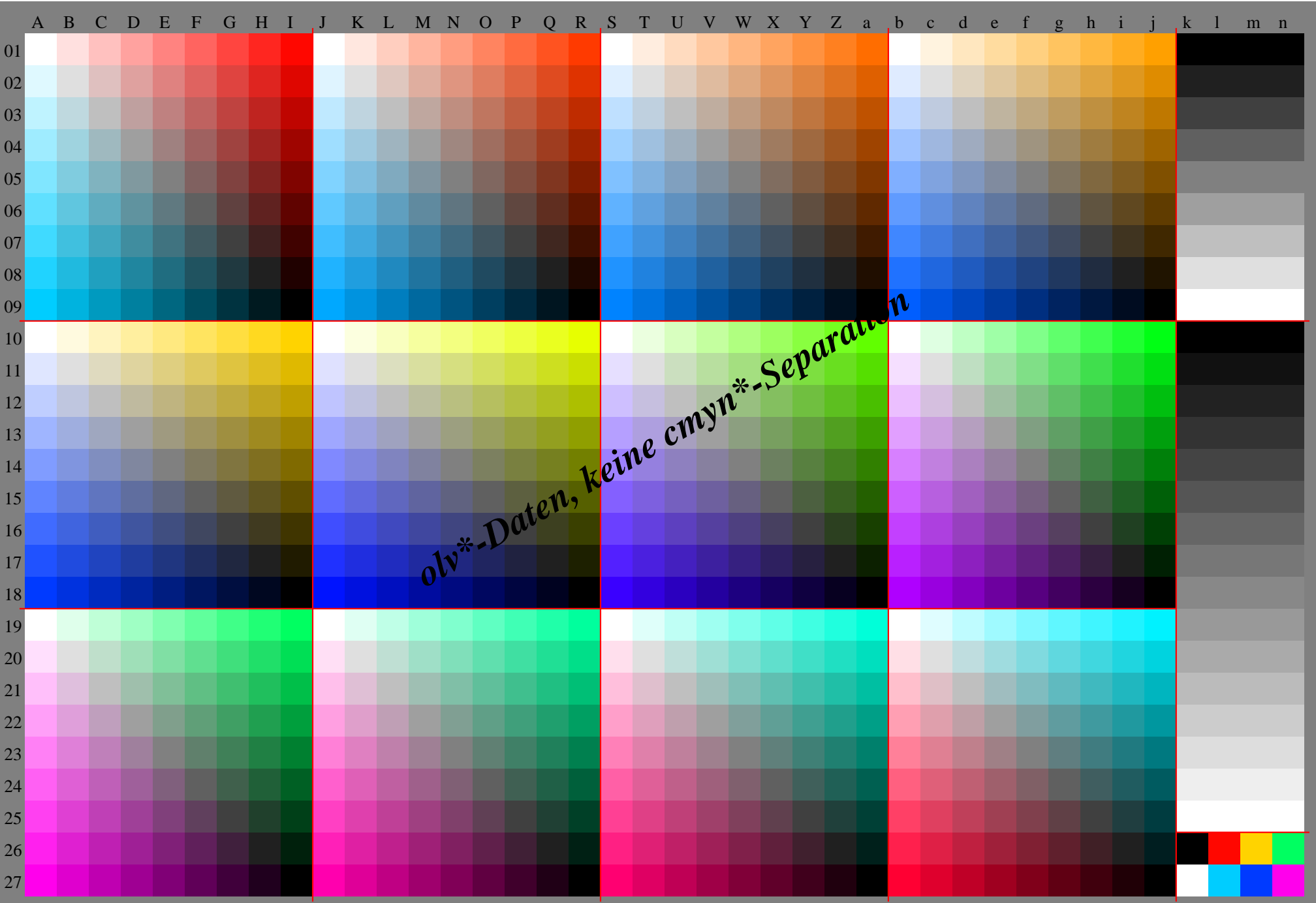
TUB-Registrierung: 20100101-JG23/JG23L0NA.TXT /.PS TUB-Material: Code=rh4ta
Anwendung für Beurteilung und Messung von Drucker- oder Monitorsystemen











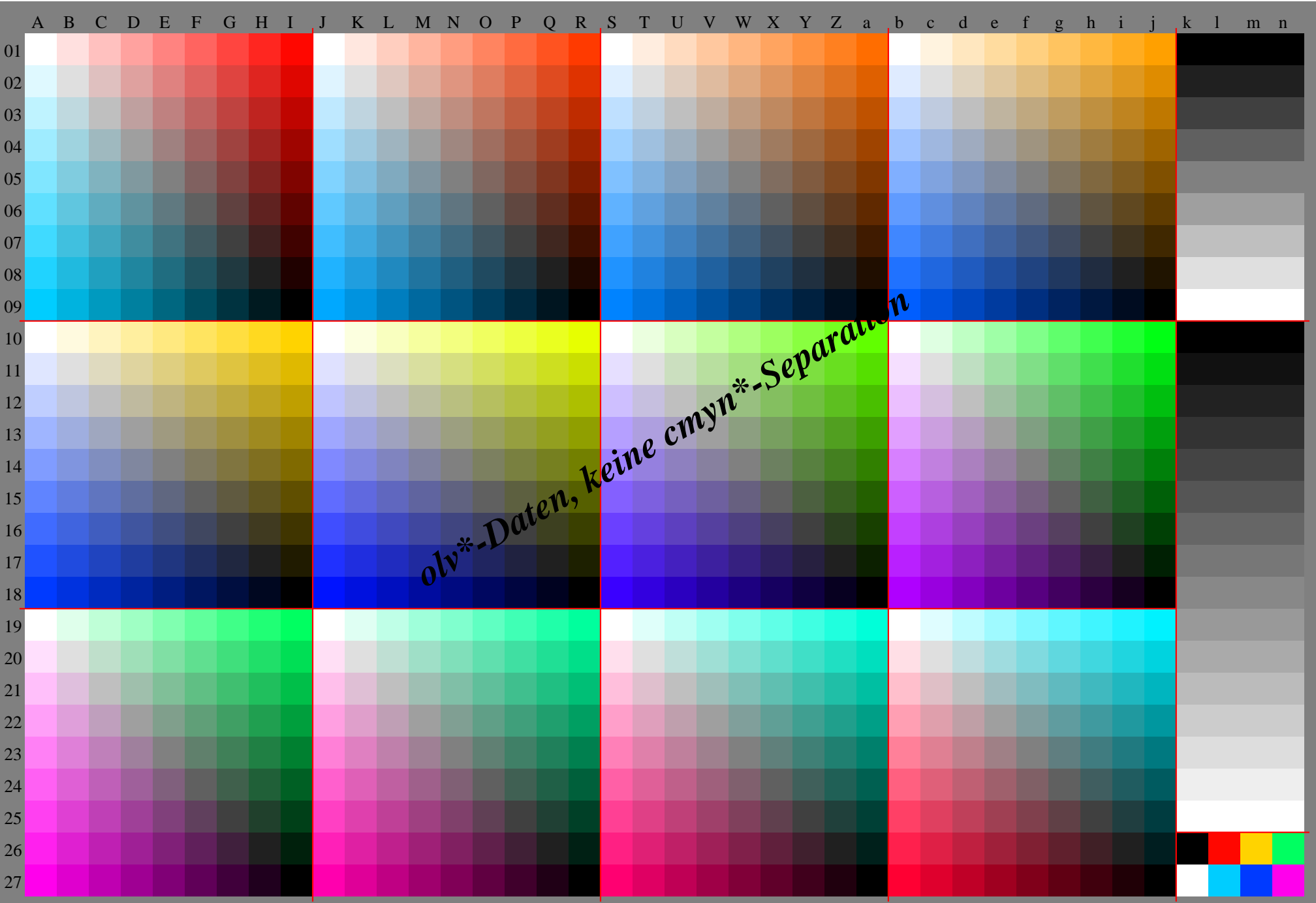


Table with columns labeled A through *e and rows labeled 01 through 27. Each cell contains numerical data or alphanumeric strings. The table is marked with red horizontal lines separating rows 10, 13, 14, 16, 17, 18, and 19.

Table with columns labeled A through e and rows numbered 01 through 27. The data consists of numerical values in a grid format. The last column is labeled 'LAB*LAB*e'.

Table with 27 columns and 100 rows of numerical data. Each row contains 27 values, with some values being 0 and others ranging from 255. The data appears to be a grid of values for a specific process or simulation.

Table with 25 columns and 100 rows of numerical data. Each row contains 25 values, with some values being 0 and others ranging from 1 to 255. The data appears to be a grid-based representation of a signal or image.

Table with 10 columns and 255 rows of numerical data. Each row contains 10 numbers, likely representing a grid of values for a specific row and column index.

