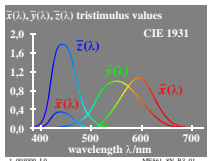
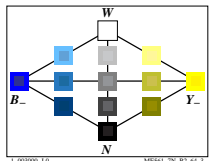
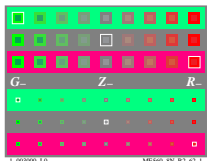
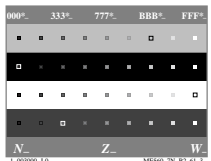
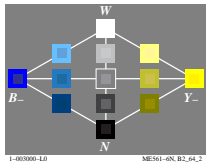
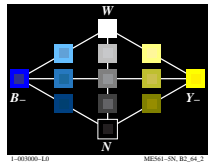
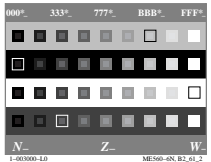
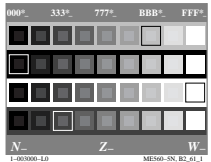
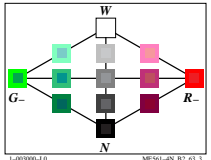
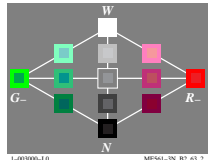
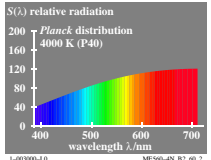
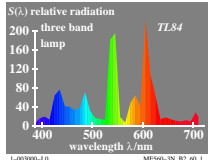
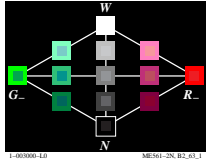
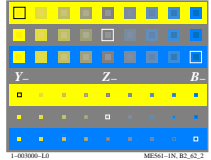
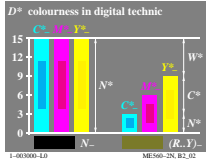
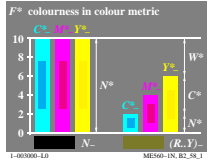


http://farbe.li.tu-berlin.de/ME56/ME56L0N0.TXT /PS; start output
N: no 3D-linearization (OL) in file (F) or PS-startup (S), page 1/1

see similar files: http://farbe.li.tu-berlin.de/ME56/ME56.HTM
http://130.149.60.45/~farbnetrik or http://farbe.li.tu-berlin.de



TUB-test chart ME56; Computer graphics and colorimetry
Image series ME56, 3D=0, de=0

input: *rgb/myk* → *rgb/myk*
output: no change

TUB registration: 20190801-ME56/ME56L0N0.TXT /PS
application for measurement of display output

TUB material: code=rhata