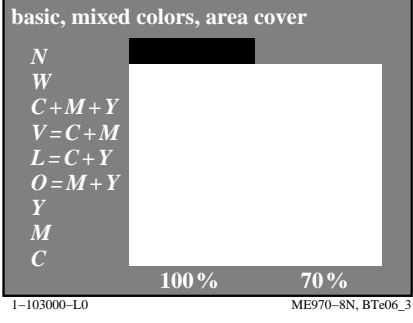
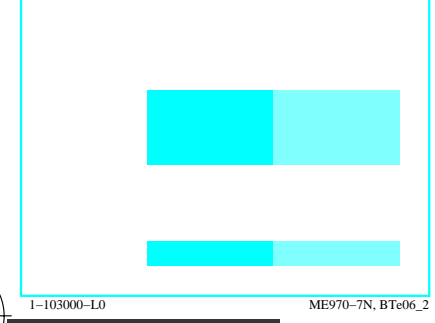
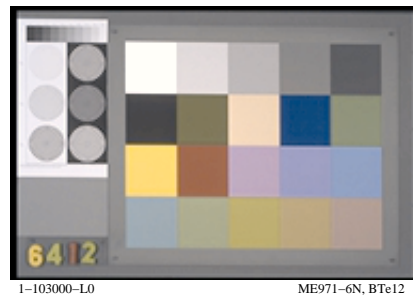
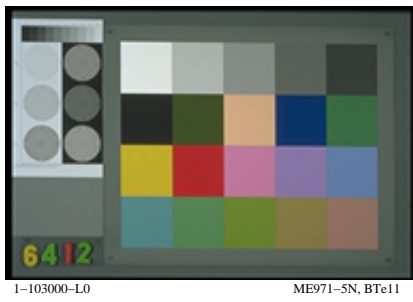
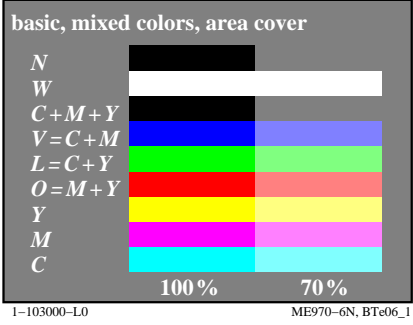
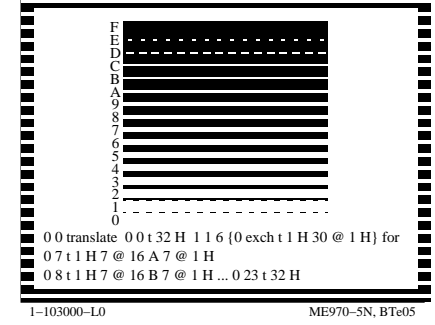
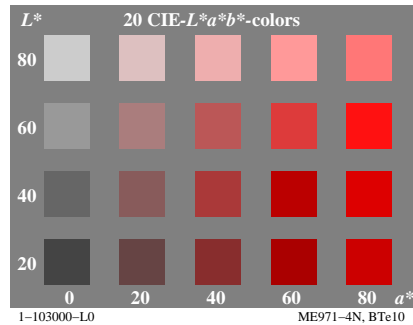
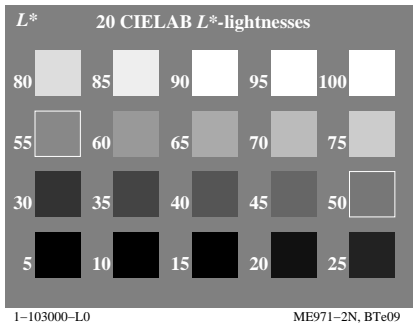
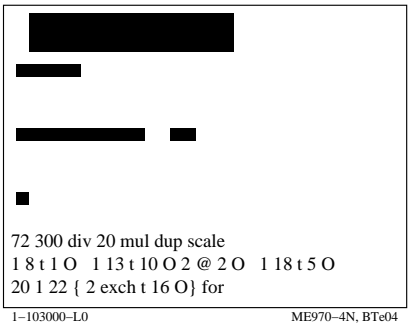
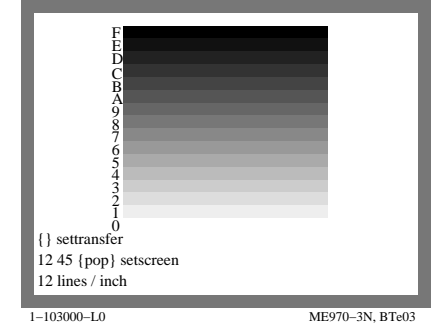
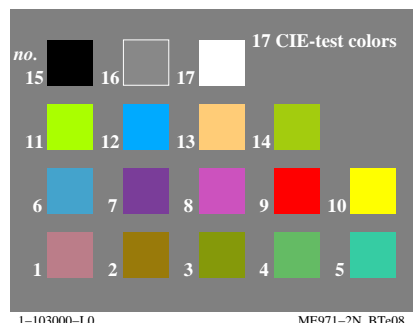
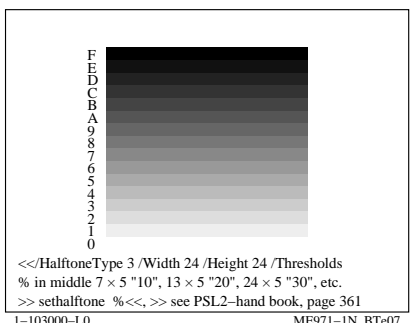
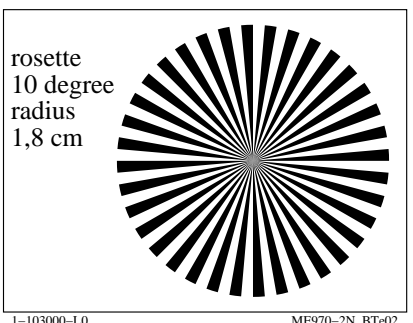
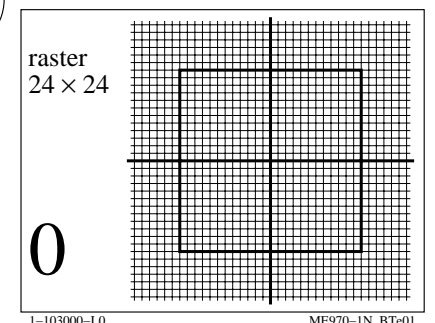
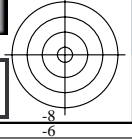
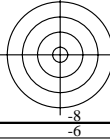
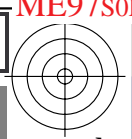
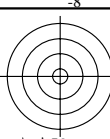


http://farbe.li.tu-berlin.de/ME97/ME97L0FA.TXT /.PS; start output
F: 3D-linearization ME97/ME97LE30FA.DAT in file (F), page 1/1

see similar files: <http://farbe.li.tu-berlin.de/ME97/ME97.HTM>
<http://130.149.60.45/~farbmetrik> or <http://farbe.li.tu-berlin.de>

TUB registration: 20190801-ME97/ME97L0FA.TXT /.PS
application for measurement of display output

TUB material: code=rh4ta



TUB-test chart ME97; Computer graphics and colorimetry
Image series ME97, 3D=1, de=0

input: rgb/cmyk -> rgb/cmyk
output: no change