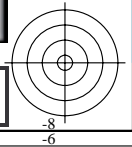
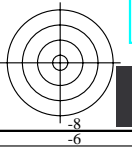
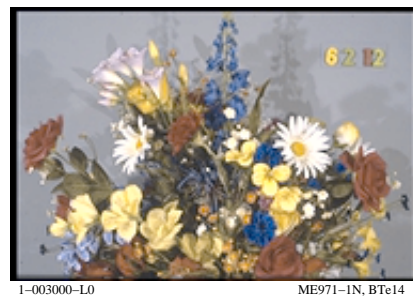
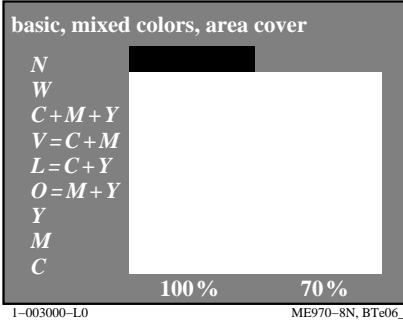
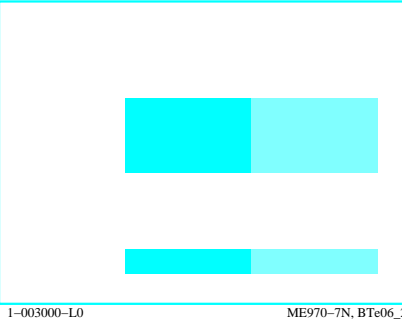
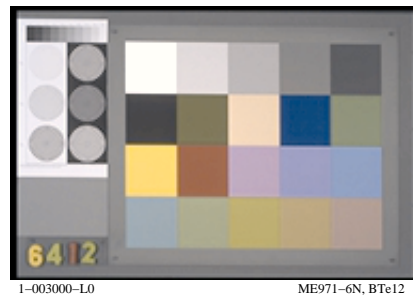
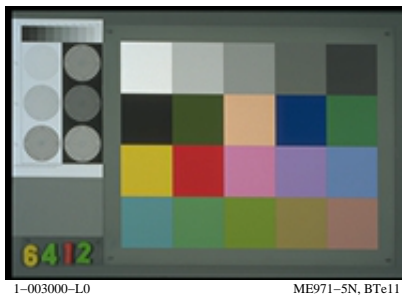
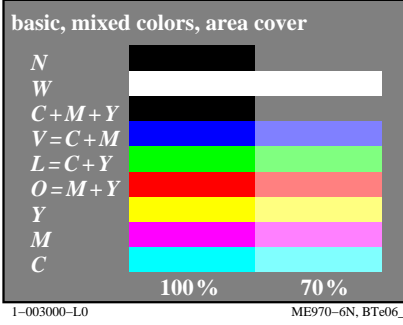
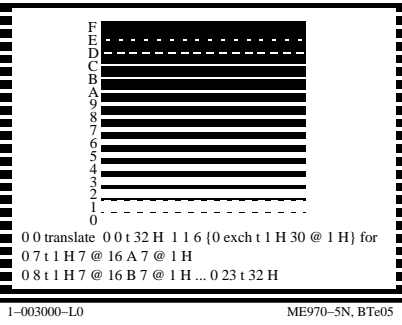
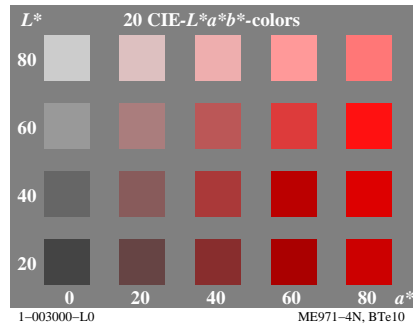
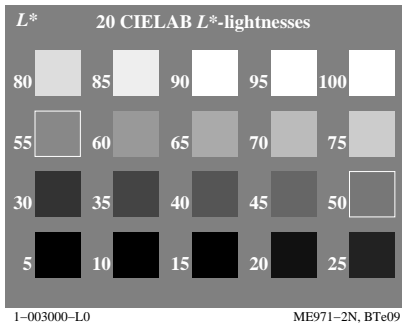
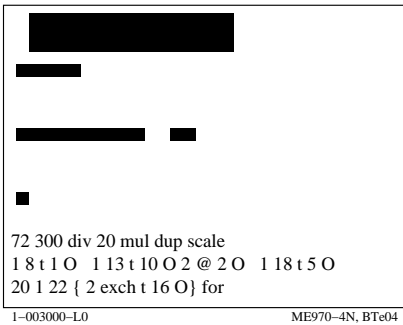
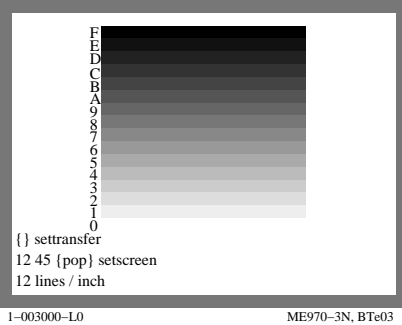
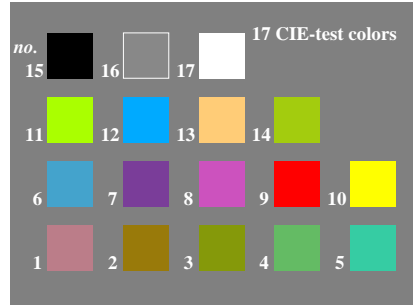
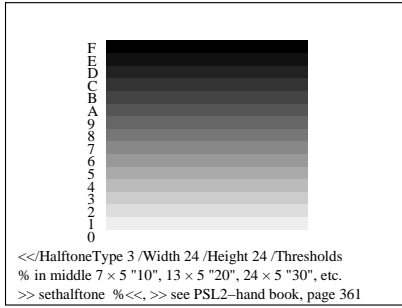
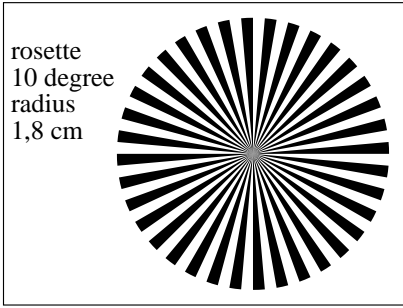
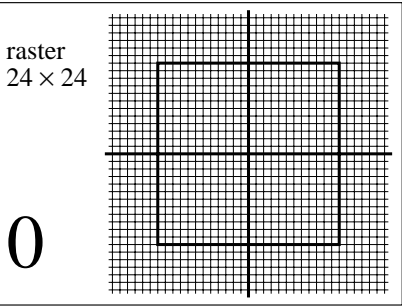
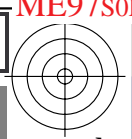
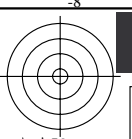


http://farbe.li.tu-berlin.de/ME97/ME97LONA.TXT /.PS; start output  
N: no 3D-linearization (OL) in file (F) or PS-startup (S), page 1/1

see similar files: http://farbe.li.tu-berlin.de/ME97/ME97.HTM  
http://130.149.60.45/~farbmetrik or http://farbe.li.tu-berlin.de



TUB-test chart ME97; Computer graphics and colorimetry  
Image series ME97, 3D=0, de=0

input: rgb/cmyk -> rgb/cmyk  
output: no change