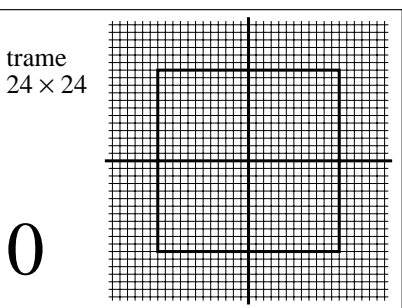
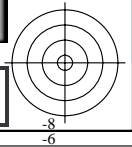
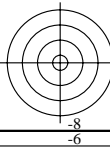
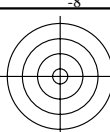


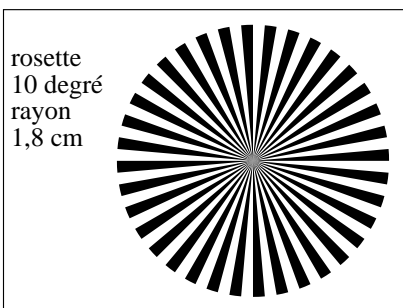
voir fichiers similaires: <http://130.149.60.45/~farbmetrik/MF47/MF47L0FA.TXT> / .PS
informations techniques: <http://www.ps.bam.de> ou <http://130.149.60.45/~farbmetrik>

TUB enregistrement: 20130201-MF47/MF47L0FA.TXT /.PS
application pour la mesure de sortie sur écran

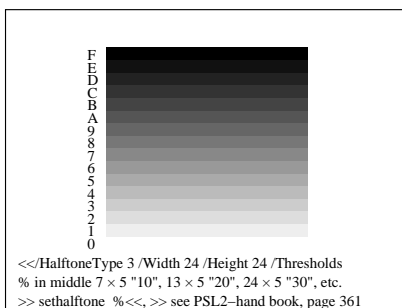
TUB matériel: code=rh4ta



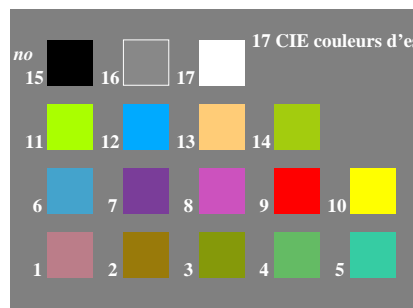
3-103030-L0 MF470-1N, BTe01



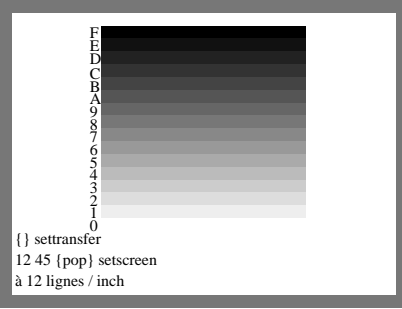
3-103030-L0 MF470-2N, BTe02



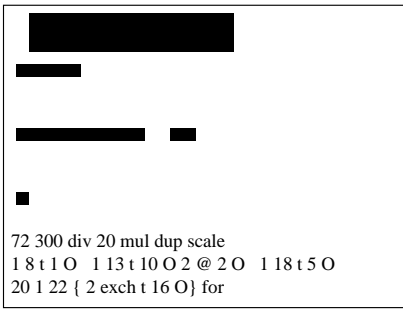
3-103030-L0 MF471-1N, BTe07



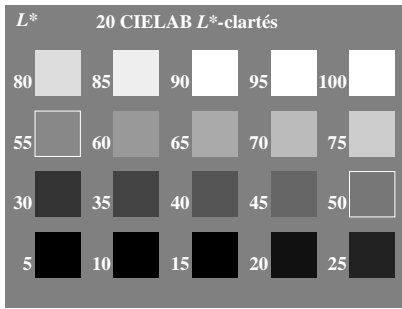
3-103030-L0 MF471-2N, BTe08



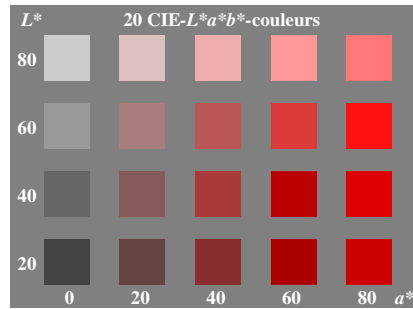
3-103030-L0 MF470-3N, BTe03



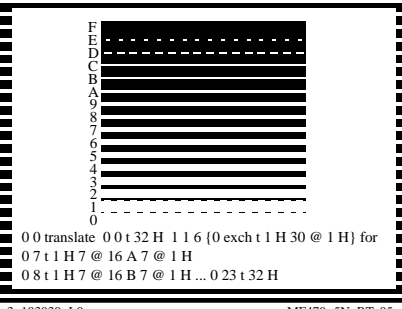
3-103030-L0 MF470-4N, BTe04



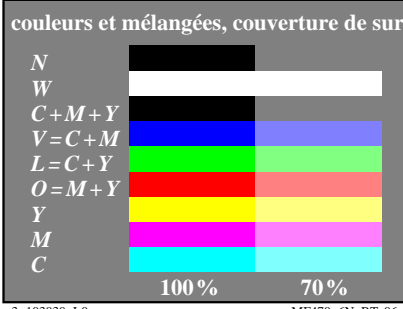
3-103030-L0 MF471-2N, BTe09



3-103030-L0 MF471-4N, BTe10



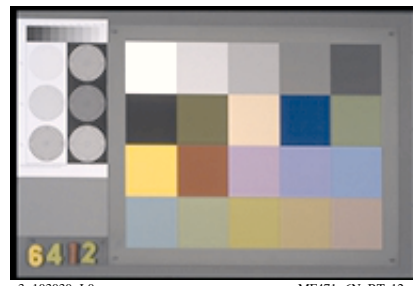
3-103030-L0 MF470-5N, BTe05



3-103030-L0 MF470-6N, BTe06_1



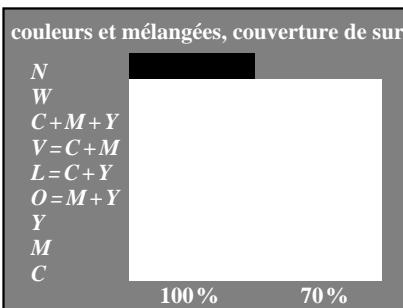
3-103030-L0 MF471-5N, BTe11



3-103030-L0 MF471-6N, BTe12



3-103030-L0 MF470-7N, BTe06_2



3-103030-L0 MF470-8N, BTe06_3



3-103030-L0 MF471-7N, BTe13



3-103030-L0 MF471-1N, BTe14

