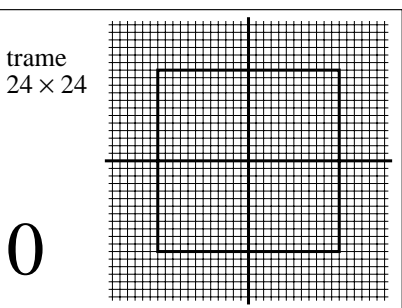
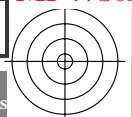
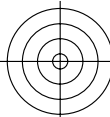
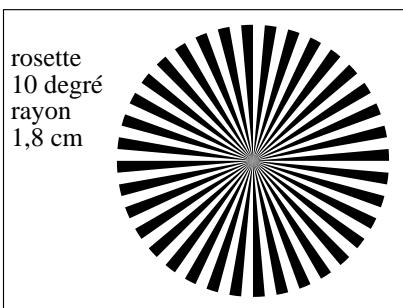


voir fichiers similaires: <http://130.149.60.45/~farbmetrik/MF47/MF47.HTM>  
informations techniques: <http://www.ps.bam.de> ou <http://130.149.60.45/~farbmetrik>

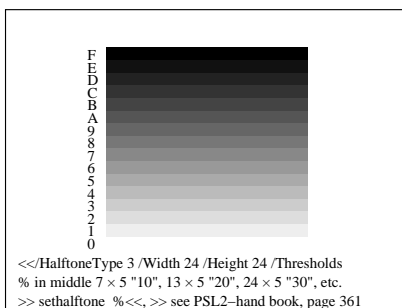
TUB enregistrement: 20130201-MF47/MF47LON0.TXT /PS  
application pour la mesure de sortie sur écran  
TUB matériel: code=rh4ta



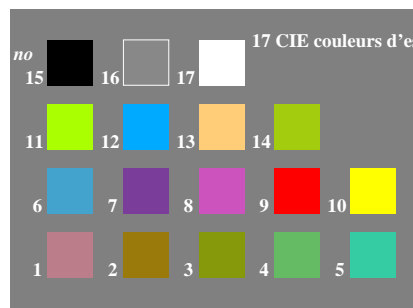
3-003030-L0 MF470-1N, BTe01



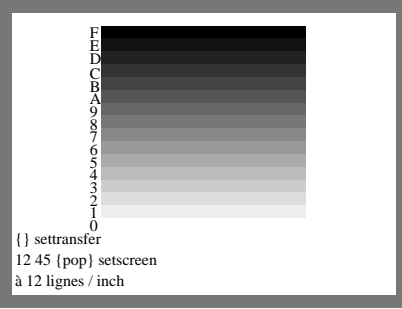
3-003030-L0 MF470-2N, BTe02



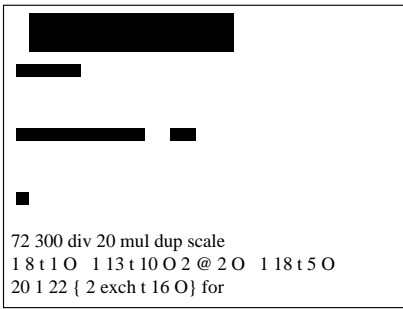
3-003030-L0 MF471-1N, BTe07



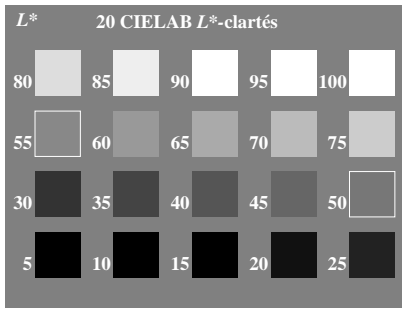
3-003030-L0 MF471-2N, BTe08



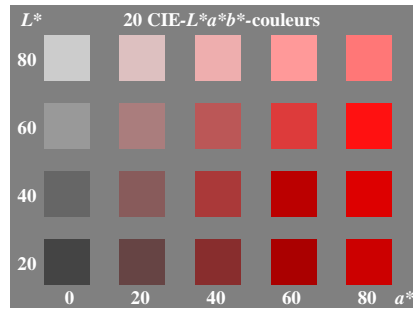
3-003030-L0 MF470-3N, BTe03



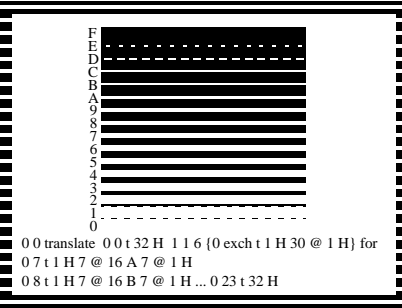
3-003030-L0 MF470-4N, BTe04



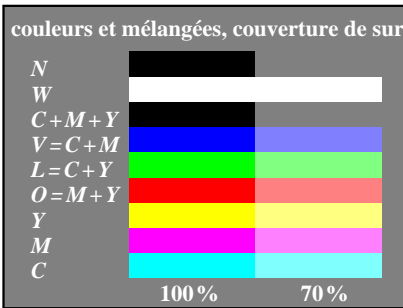
3-003030-L0 MF471-2N, BTe09



3-003030-L0 MF471-4N, BTe10



3-003030-L0 MF470-5N, BTe05



3-003030-L0 MF470-6N, BTe06\_1



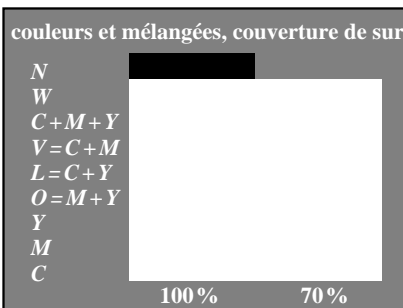
3-003030-L0 MF471-5N, BTe11



3-003030-L0 MF471-6N, BTe12



3-003030-L0 MF470-7N, BTe06\_2



3-003030-L0 MF470-8N, BTe06\_3



3-003030-L0 MF471-7N, BTe13



3-003030-L0 MF471-1N, BTe14

