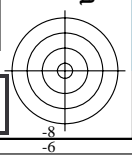
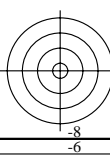
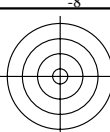


Siehe ähnliche Dateien: <http://130.149.60.45/~farbmetrik/MG02/MG02.HTM>  
Technische Information: <http://www.ps.bam.de> oder <http://130.149.60.45/~farbmetrik>

TUB-Registrierung: 20130201-MG02/MG02L0FP.PDF /.PS  
Anwendung für Messung von Display-Ausgabe

TUB-Material: Code=rh4ta



**Farbenvielfalt: ungeordnet**

0-103030-L0 MG020-1N, B2\_02

**unbunte Farben: ungeordnet**

0-103030-L0 MG020-2N, B2\_03

**Gerätefarbe: Blau B\_**  
Kriterium: weder ... noch ...

grünlich ... Blau B\_ ... rötlich

Hex-code für *rgb\_* und *cm\_*  
0BF\_ 07F\_ 03F\_ 00F\_ 30F\_ 70F\_ B0F\_ F40\_ F80\_ FC0\_ FF0\_ CF0\_ 8F0\_ 4F0\_

0-103030-L0 MG021-1N, B2\_10

**Gerätefarbe: Grün G\_**  
Kriterium: weder ... noch ...

bläulich ... Grün G\_ ... gelblich

Hex-code für *rgb\_* und *cm\_*  
0FB\_ 0F7\_ 0F3\_ 0F0\_ 3F0\_ 7F0\_ BF0\_ F04\_ F08\_ F0C\_ F0F\_ C0F\_ 80F\_ 40F\_

0-103030-L0 MG021-2N, B2\_11

**bunte Farben: ungeordnet**

0-103030-L0 MG020-3N, B2\_04

**Farbenvielfalt: *rgb\_*, *cm\_*-Code**

BBB\_ 0FF\_ 00F\_ F0F\_ 777\_ 070\_ 707\_ F77\_ 444\_ F00\_ FF0\_ 0F0\_ 888\_ F8F\_ 8F8\_ 088\_

07F\_ 770\_ 70F\_ 333\_ 0F7\_ F70\_ F07\_ 077\_ F80\_ 88F\_ 8F0\_ CCC\_ F08\_ 08F\_ 0F8\_ F88\_

000\_ F00\_ 7FF\_ FF7\_ FF0\_ 007\_ 700\_ FFF\_ FFF\_ 0FF\_ 800\_ 008\_ 00F\_ FF8\_ 8FF\_ 000\_

0-103030-L0 MG020-4N, B2\_05

**Gerätefarbe: Rot R\_**  
Kriterium: weder ... noch ...

bläulich ... Rot R\_ ... gelblich

Hex-code für *rgb\_* und *cm\_*  
F0B\_ F07\_ F03\_ F00\_ F30\_ F70\_ FB0\_ 0F4\_ 0F8\_ 0FC\_ 0FF\_ 0C0\_ 08F\_ 04F\_

0-103030-L0 MG021-3N, B2\_12

**Buntonkreis achteitlig**

0-103030-L0 MG021-4N, B2\_13

**W**

0-103030-L0 MG020-5N, B2\_06

**W**

0-103030-L0 MG020-6N, B2\_07

**Buntonkreis sechzehnteilig**

0-103030-L0 MG021-5N, B2\_14

**W**

$C^* = 25$

0-103030-L0 MG021-6N, B2\_16

**W**

0-103030-L0 MG020-7N, B2\_08

**Gerätefarbe: Gelb Y\_**  
Kriterium: weder ... noch ...

grünlich ... Gelb Y\_ ... rötlich

Hex-code für *rgb\_* und *cm\_*  
9F0\_ BF0\_ DF0\_ FF0\_ FD0\_ FB0\_ F90\_ 60F\_ 40F\_ 20F\_ 00F\_ 02F\_ 04F\_ 06F\_

0-103030-L0 MG020-8N, B2\_09

**W**

$L^* = 50$

0-103030-L0 MG021-7N, B2\_15

**W**

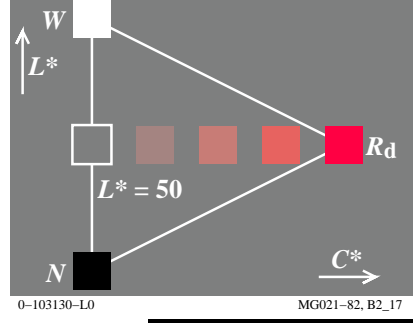
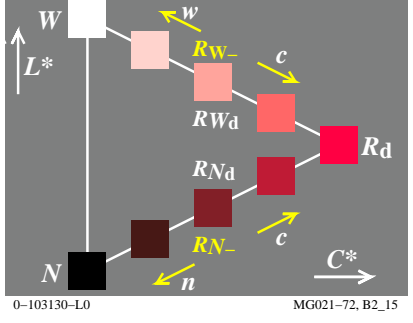
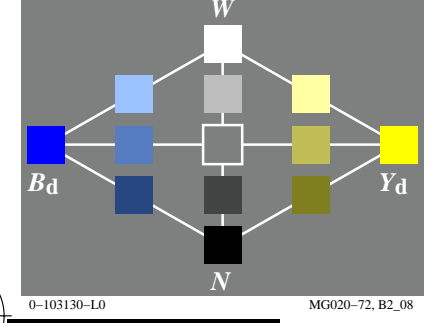
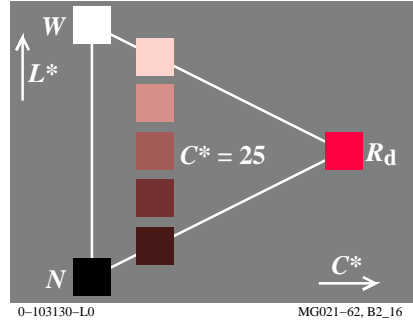
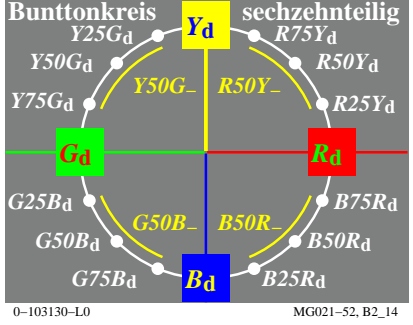
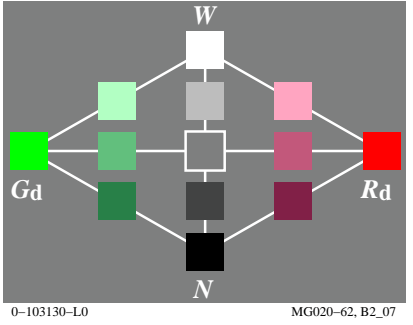
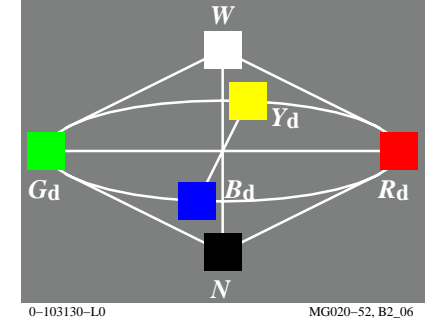
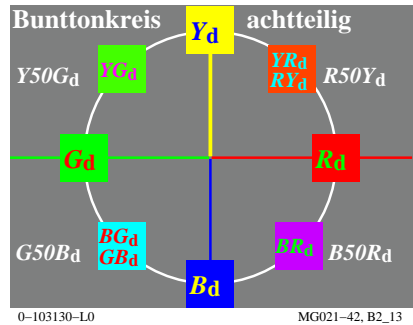
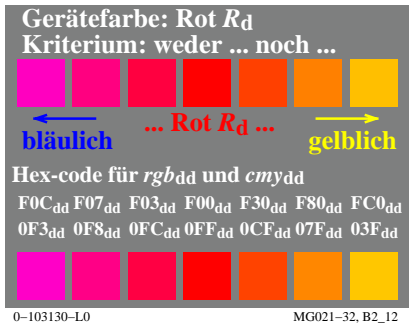
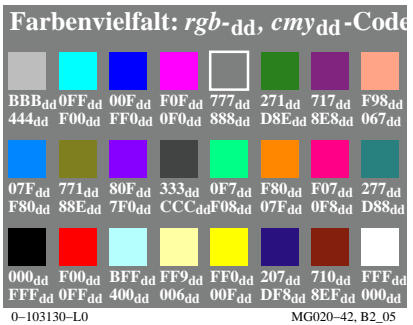
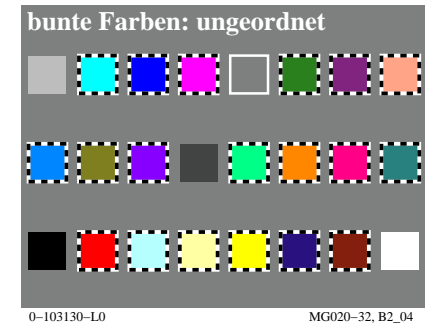
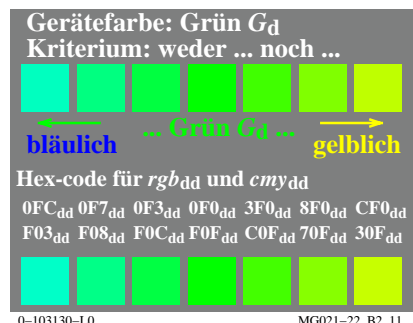
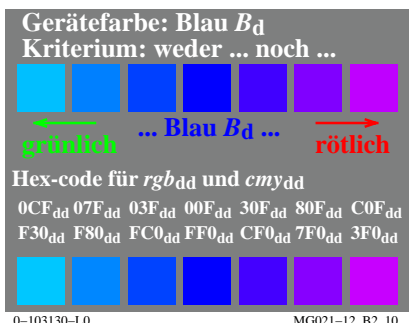
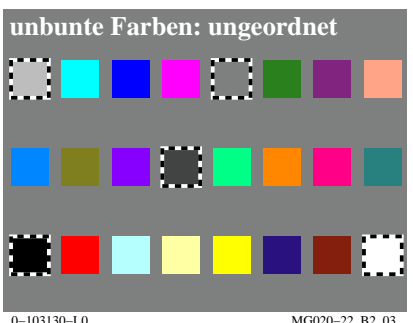
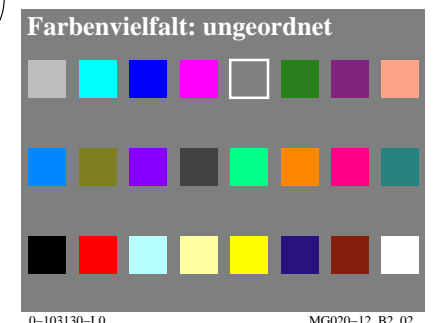
$L^* = 50$

0-103030-L0 MG021-8N, B2\_17



Siehe ähnliche Dateien: <http://130.149.60.45/~farbmetrik/MG02/MG02.HTM>  
Technische Information: <http://www.ps.bam.de> oder <http://130.149.60.45/~farbmetrik>

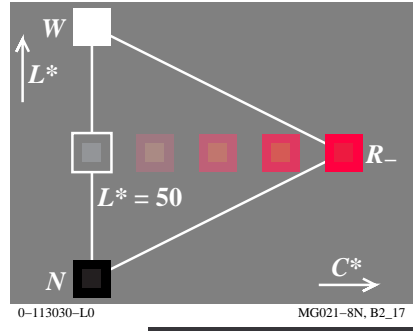
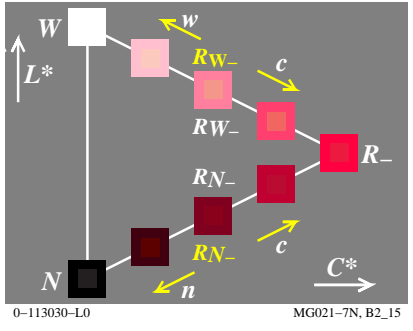
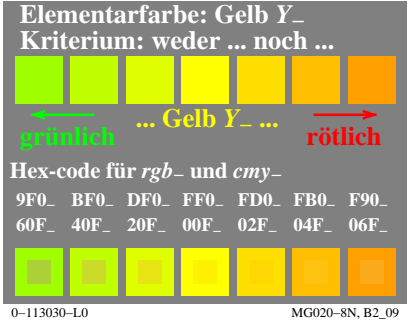
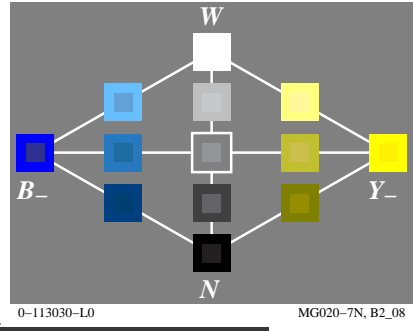
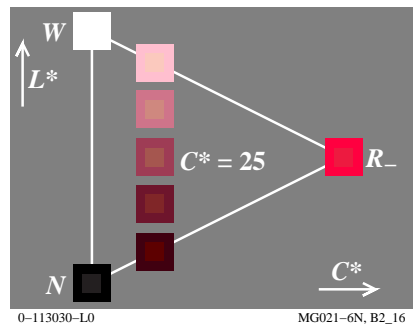
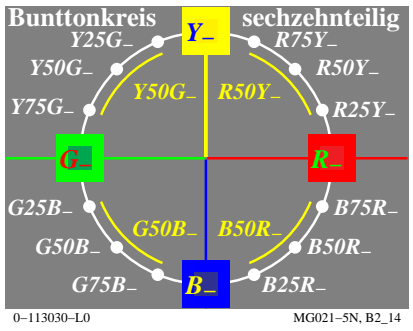
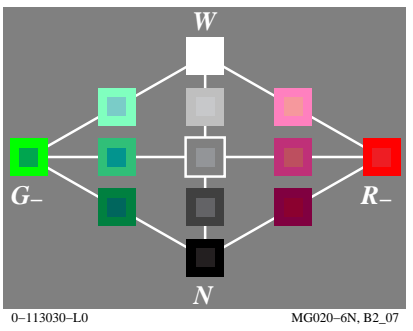
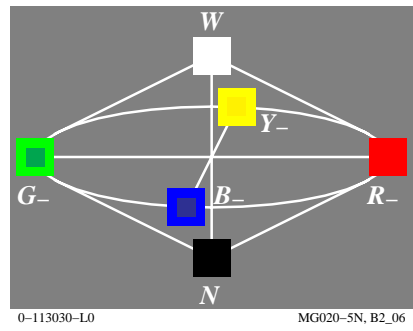
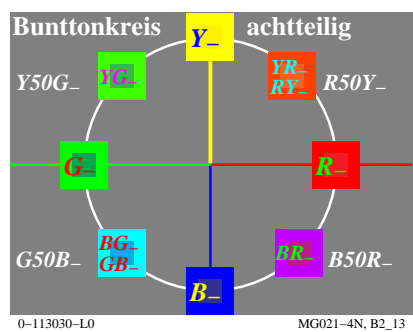
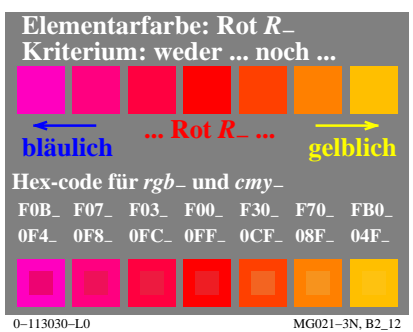
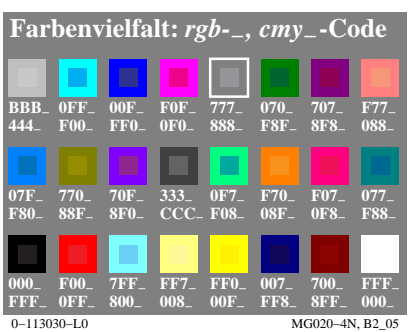
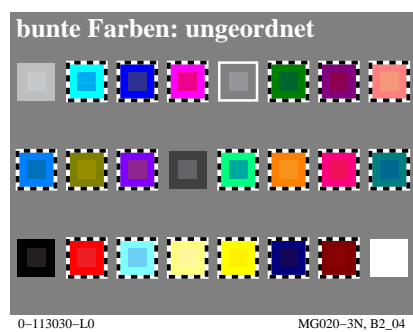
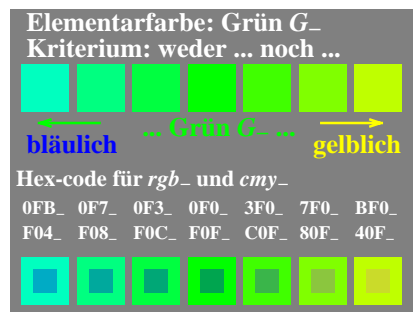
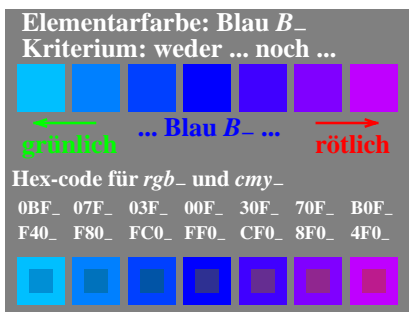
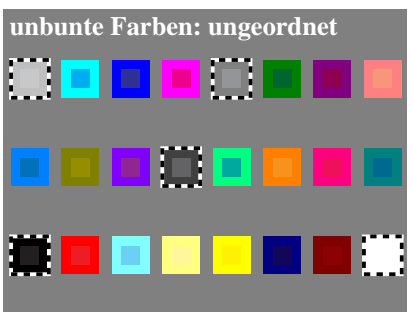
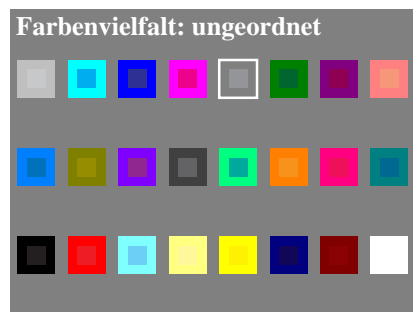
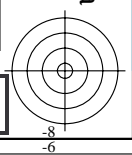
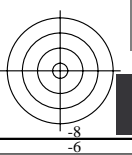
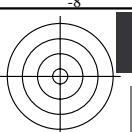
TUB-Registrierung: 20130201-MG02/MG02L0FP.PDF /.PS  
Anwendung für Messung von Display-Ausgabe, keine Separation  
TUB-Material: Code=rh4ta



Siehe ähnliche Dateien: <http://130.149.60.45/~farbmetrik/MG02/MG02.HTM>  
Technische Information: <http://www.ps.bam.de> oder <http://130.149.60.45/~farbmetrik>

TUB-Registrierung: 20130201-MG02/MG02L0FP.PDF /.PS  
Anwendung für Messung von Display-Ausgabe

TUB-Material: Code=rh4ta



Siehe ähnliche Dateien: <http://130.149.60.45/~farbmetrik/MG02/MG02.HTM>  
Technische Information: <http://www.ps.bam.de> oder <http://130.149.60.45/~farbmetrik>

TUB-Registrierung: 20130201-MG02/MG02L0FP.PDF /.PS  
Anwendung für Messung von Display-Ausgabe, keine Separation  
TUB-Material: Code=rh4ta

