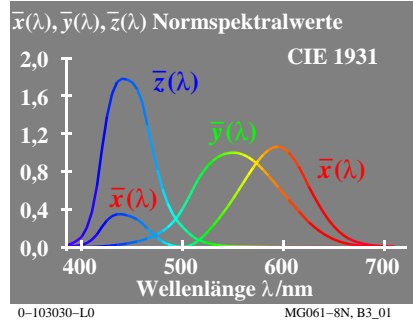
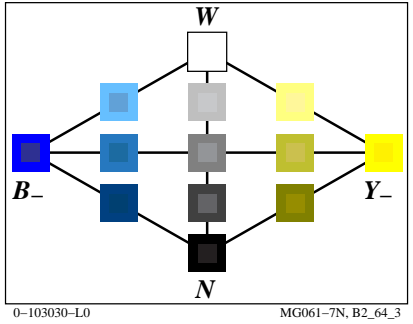
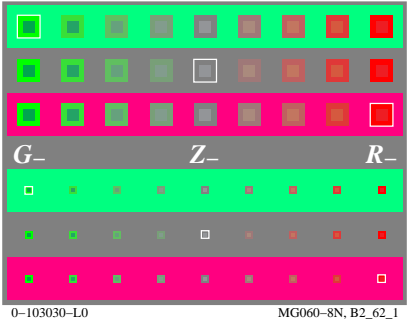
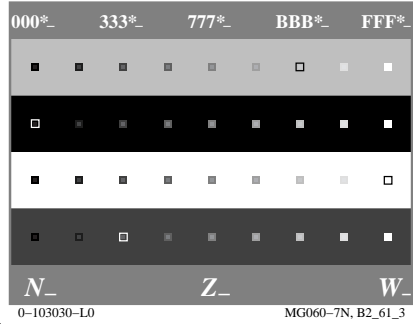
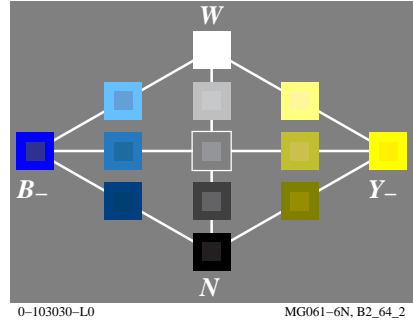
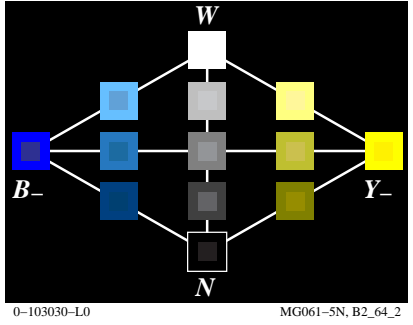
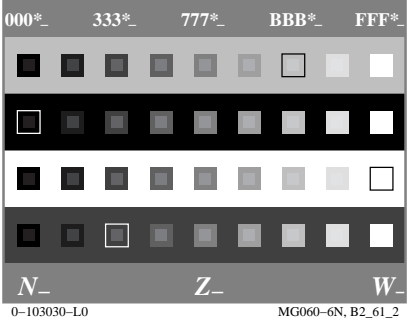
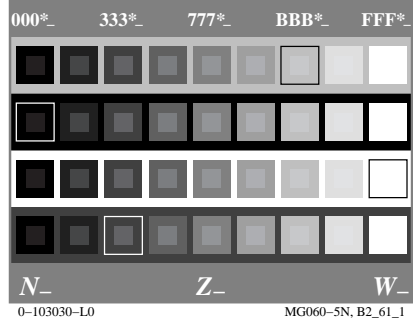
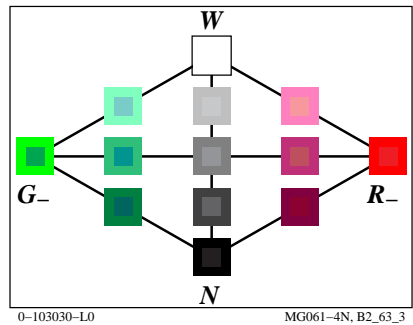
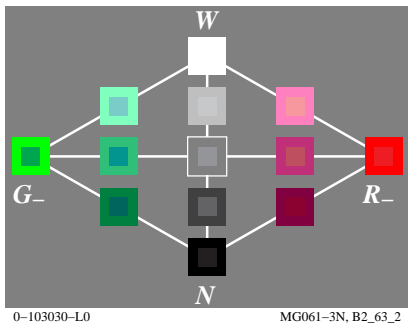
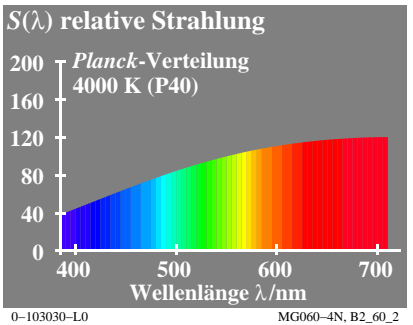
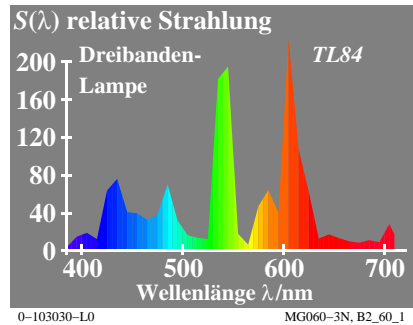
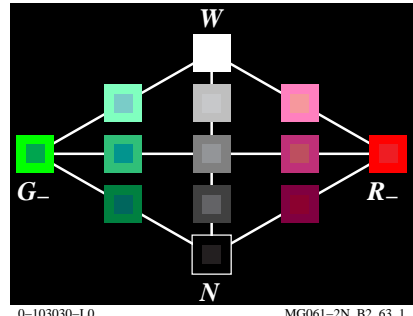
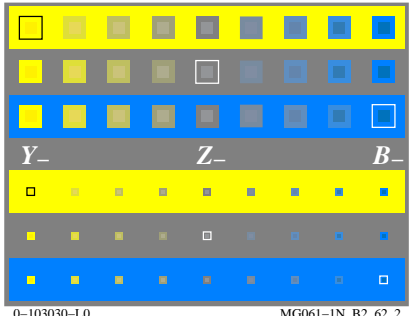
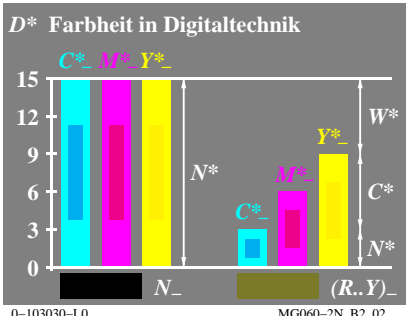
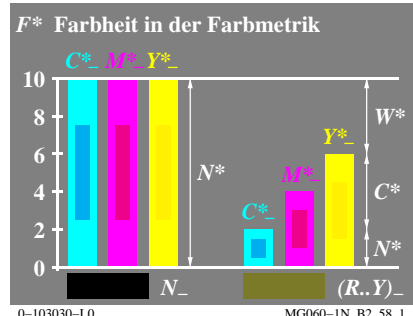
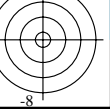
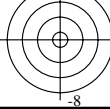
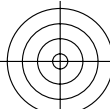


Siehe ähnliche Dateien: <http://130.149.60.45/~farbmetrik/MG06/MG06L0FP.PDF> / .PS
Technische Information: <http://www.ps.bam.de> oder <http://130.149.60.45/~farbmetrik>

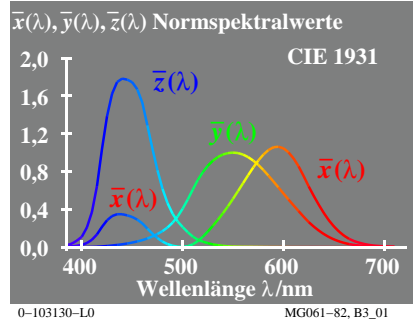
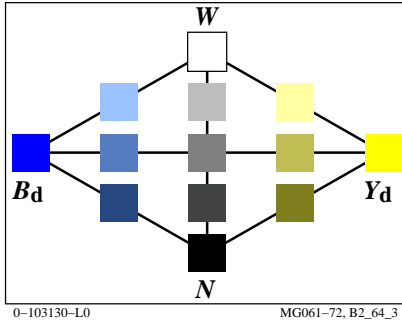
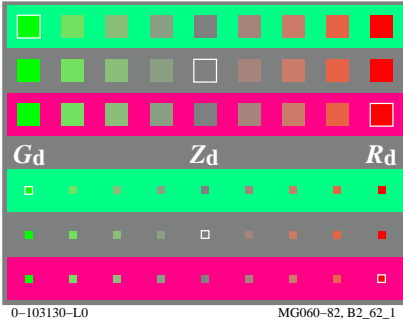
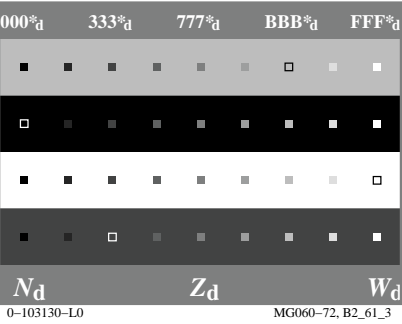
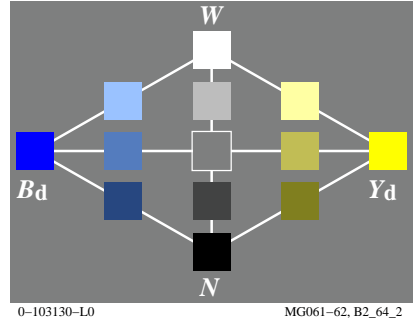
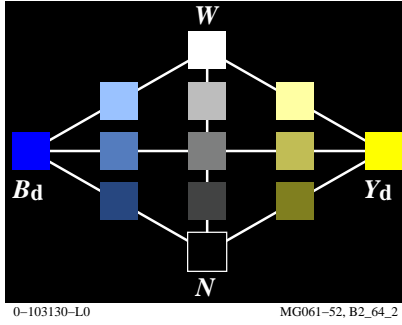
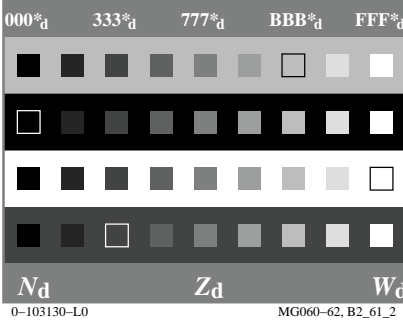
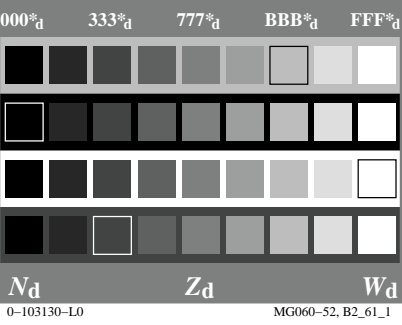
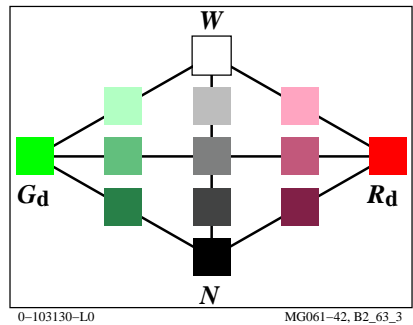
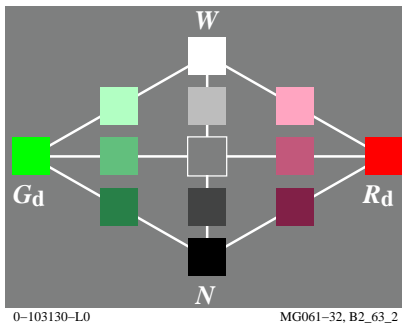
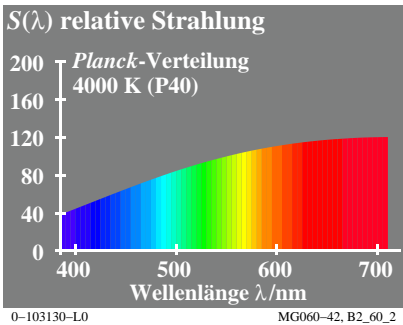
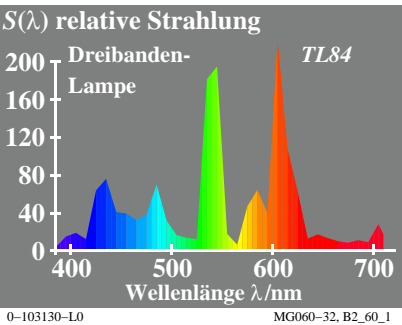
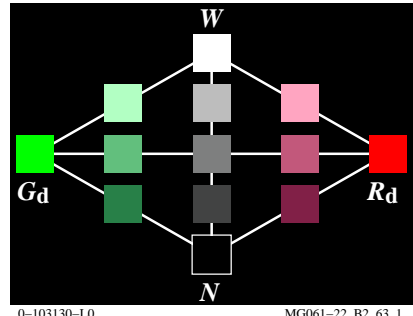
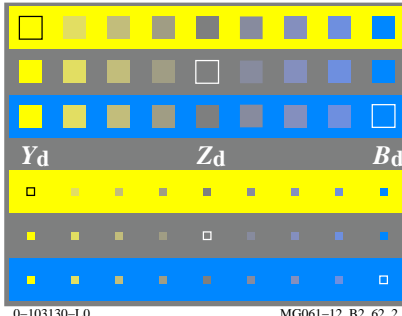
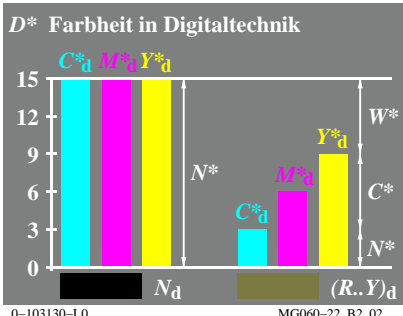
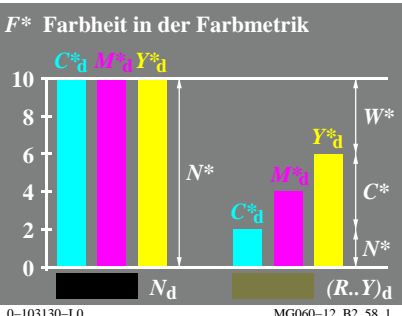
TUB-Registrierung: 20130201-MG06/MG06L0FP.PDF / .PS
Anwendung für Messung von Display-Ausgabe

TUB-Material: Code=rh4ta



Siehe ähnliche Dateien: <http://130.149.60.45/~farbmetrik/MG06/MG06L0FP.PDF> / .PS
Technische Information: <http://www.ps.bam.de> oder <http://130.149.60.45/~farbmetrik>

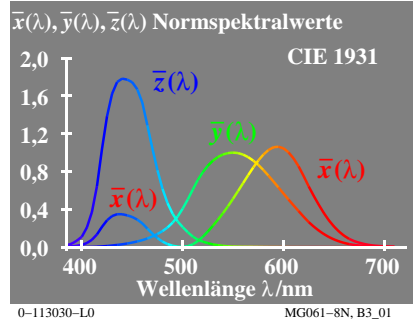
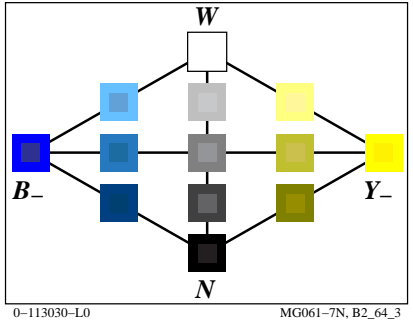
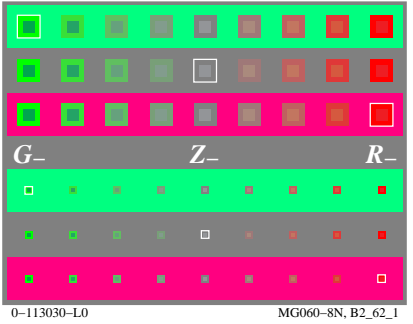
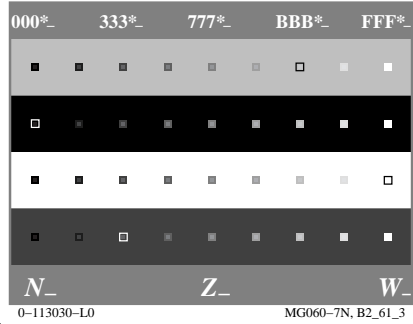
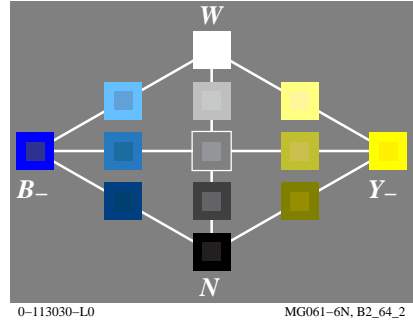
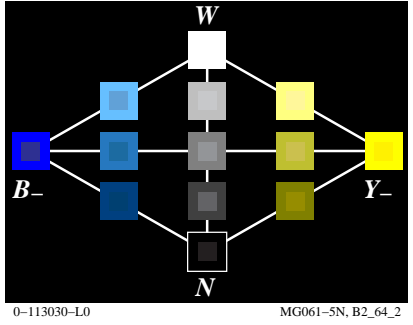
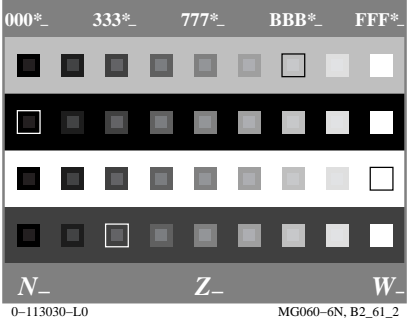
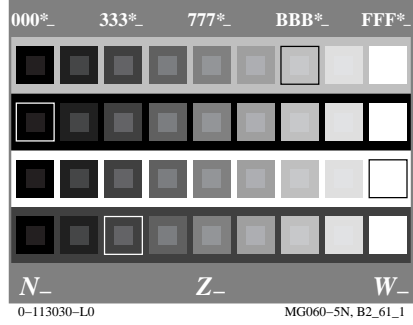
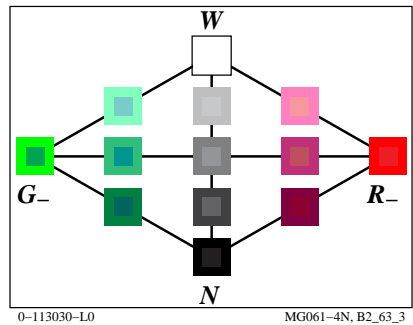
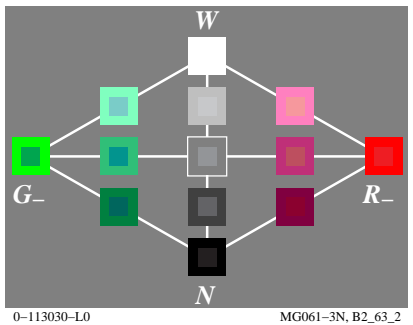
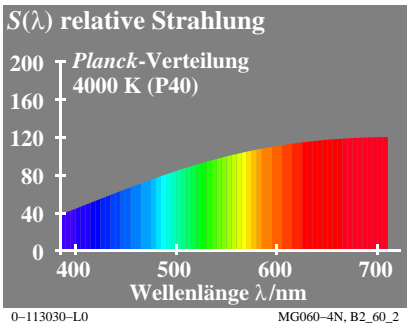
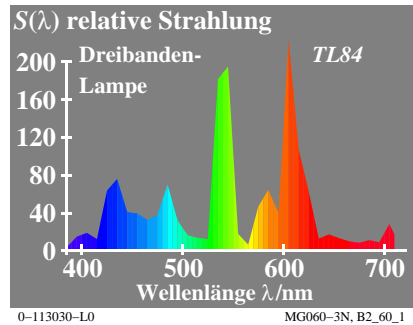
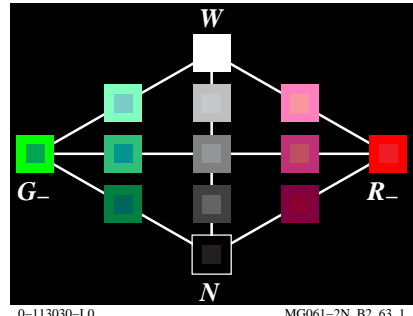
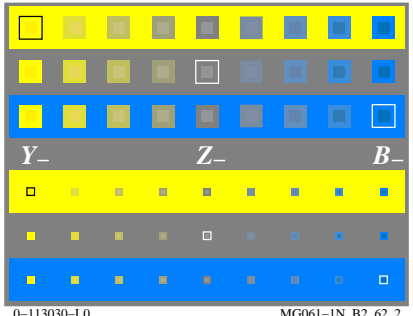
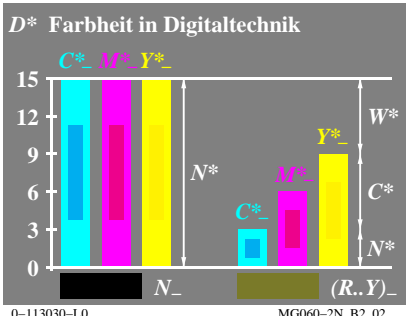
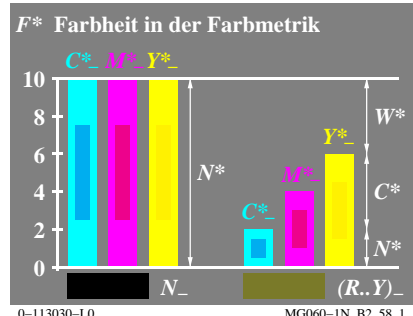
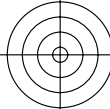
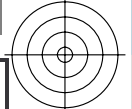
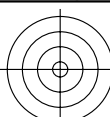
TUB-Registrierung: 20130201-MG06/MG06L0FP.PDF /.PS TUB-Material: Code=rh4ta
Anwendung für Messung von Display-Ausgabe, keine Separation



Siehe ähnliche Dateien: <http://130.149.60.45/~farbmetrik/MG06/MG06L0FP.PDF> / .PS
Technische Information: <http://www.ps.bam.de> oder <http://130.149.60.45/~farbmetrik>

TUB-Registrierung: 20130201-MG06/MG06L0FP.PDF /.PS
Anwendung für Messung von Display-Ausgabe

TUB-Material: Code=rh4ta



Siehe ähnliche Dateien: <http://130.149.60.45/~farbmetrik/MG06/MG06L0FP.PDF> / .PS
Technische Information: <http://www.ps.bam.de> oder <http://130.149.60.45/~farbmetrik>

TUB-Registrierung: 20130201-MG06/MG06L0FP.PDF /.PS
Anwendung für Messung von Display-Ausgabe, keine Separation
TUB-Material: Code=rh4ta

