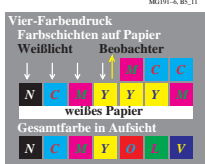
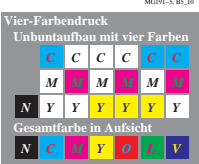
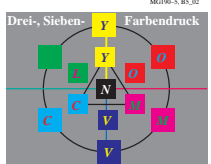
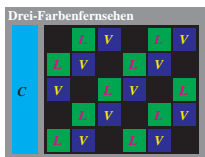
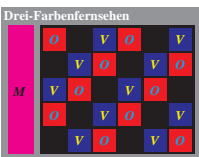
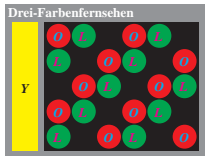
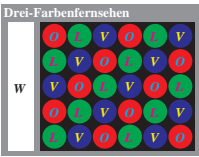
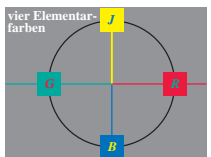
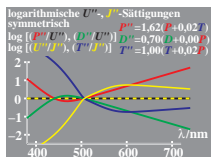
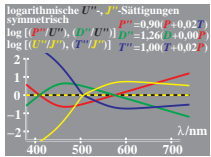
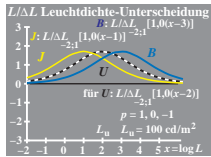


Siehe Originalkopie: <http://web.me.com/klaus-richter/MG19/MG19L0N1.TXT> /.PS  
 Technische Information: <http://www.ps.bam.de> oder <http://130.149.60.45/~farbmetrik>



TUB-Registrierung: 20101101-MG19/MG19L0N1.TXT /.PS  
 Anwendung für Messung von Drucker- oder Monitorsystemen

TUB-Material: Code=th4ta