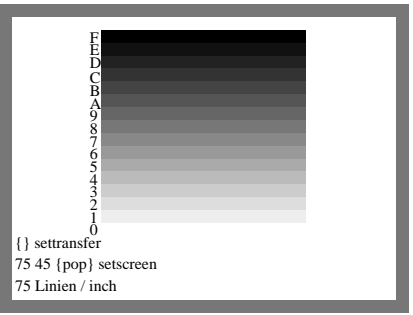


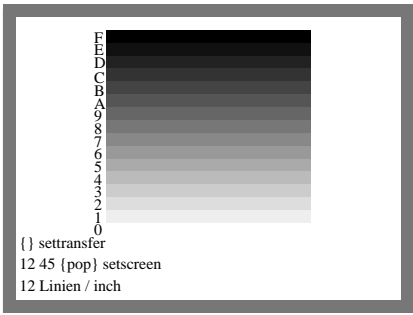
<http://130.149.60.45/~farbmetrik/MG28/MG28L0NA.TXT> /PS; Start-Ausgabe

N: Keine Ausgabe-Linearisierung (OL) in Datei (F), Startup (S), Gerät (D)

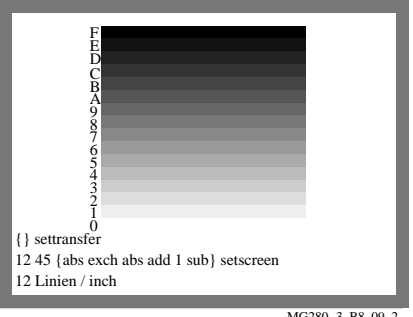
Siehe Original/Kopie: <http://web.me.com/klaus.richter/MG28/MG28L0NA.TXT> /PS
Technische Information: <http://www.ps.bam.de> oder <http://130.149.60.45/~farbmetrik>



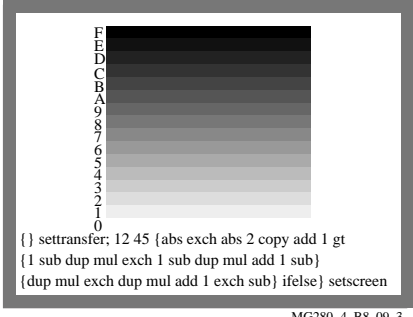
MG280-1, B8_07_3



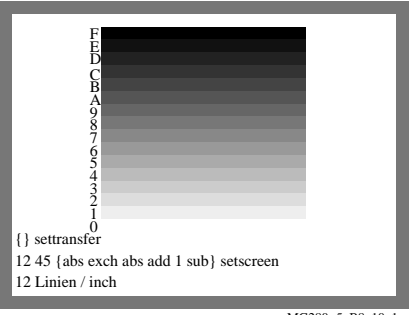
MG280-2, B8_09_1



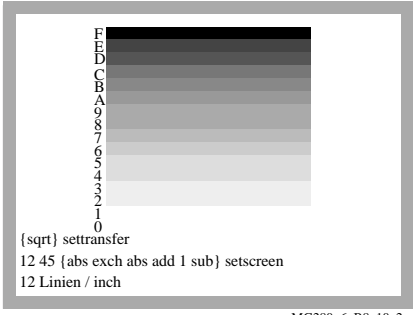
MG280-3, B8_09_2



MG280-4, B8_09_3



MG280-5, B8_10_1



MG280-6, B8_10_2

PSL1-Programmcode: Bildmatrix 32x24 zur Erzeugung von 16 Graustufen

```
!%PS-Adobe-3.0 B8250-ln.eps      20.10.94
%%BoundingBox: 72 90 226 206
/FS {findfont exch scalefont setfont} bind def
/MM {72 25.4 div mul} def
/proz1 {pop} bind def
/proz2 {} bind def
%%EndProlog
gsave

{proz2 } settransfer
12 45 {proz1} setscreen
72 90 translate
32 3600 div 72 mul 240 mul
24 3600 div 72 mul 240 mul scale

/DatenString 16 string def %Bild 32x24 von unten nach oben
{32 24 4 [32 0 0 -24 0 24]}
{currentfile DatenString readhexstring pop} image
7777777777777777777777777777777
7FFFFFFFFFFFFFFFFFFFFFFFFFFFFF7
7FFFFFFFF000000000000000000000000FFFFFFFF7
7FFFFFFFF1111111111111111FFFFFFFF7
7FFFFFFFF2222222222222222FFFFFFFF7
7FFFFFFFF3333333333333333FFFFFFFF7
7FFFFFFFF4444444444444444FFFFFFFF7
7FFFFFFFF5555555555555555FFFFFFFF7
7FFFFFFFF6666666666666666FFFFFFFF7
7FFFFFFFF7777777777777777FFFFFFFF7
7FFFFFFFF8888888888888888FFFFFFFF7
7FFFFFFFF9999999999999999FFFFFFFF7
7FFFFFFFFAAAAAAAAAAAAAAAAFFFFFFFF7
7FFFFFFFFBBBBBBBBBBBBBBBBFFFFFFFF7
7FFFFFFFFCCCCCCCCCCCCCCCCFFFFFFFF7
7FFFFFFFFDDDDDDDDDDDDDDDDDDFFFFFFFF7
7FFFFFFFFEEEEEEEEEEEEEEEEFFFFFFFF7
7FFFFFFFFFFFFFFFFFFFFFFFFFFFFFFFF7
7FFFFFFFFFFFFFFFFFFFFFFFFFFFFFFFF7
7FFFFFFFFFFFFFFFFFFFFFFFFFFFFFFFF7
7FFFFFFFFFFFFFFFFFFFFFFFFFFFFFFFF7
7777777777777777777777777777777
grestore

72 90 translate
6 /Times-Roman FS
6 24 moveto ({} settransfer) show
6 16 moveto (12 45 {pop} setscreen) show
6 8 moveto (12 Linien / inch) show

34 28.75 moveto (0) show
%! hier weiterer Text 0, 1, ..., F, nicht protokolliert
34 101.0 moveto (F) show
showpage
```

MG281-7, B8_08

TUB-Prüfvorlage MG28; Richter: Computergrafik und Farbmetrik Eingabe: *cmymk setcmykcolor*

Farbbuchserien: *PostScript* und CIE-Farbenräume Nr. 2

Ausgabe: keine Farbdatenänderung

TUB-Registrierung: 20101101-MG28/MG28L0NA.TXT /PS
Anwendung für Messung von Drucker- oder Monitorsystemen
TUB-Material: Code=rh4ta