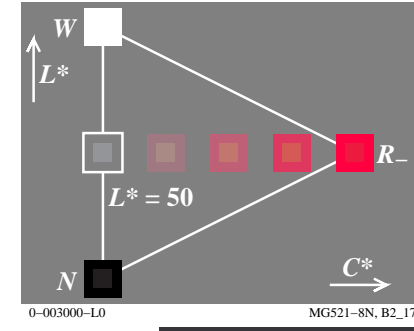
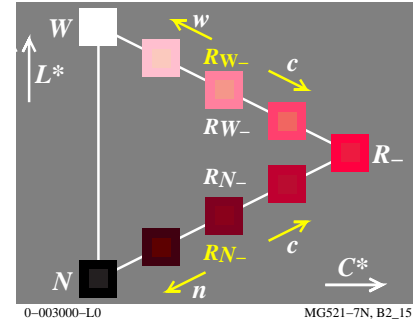
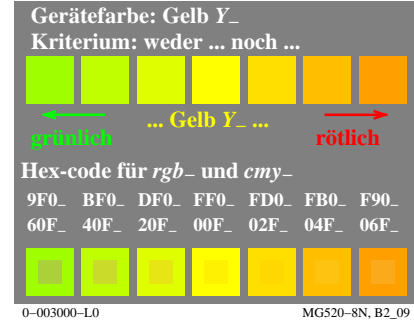
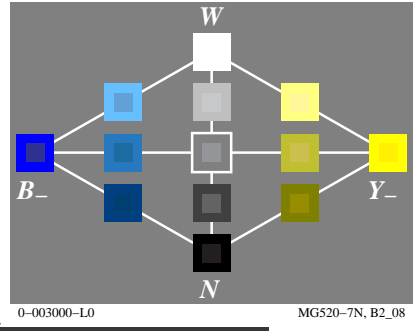
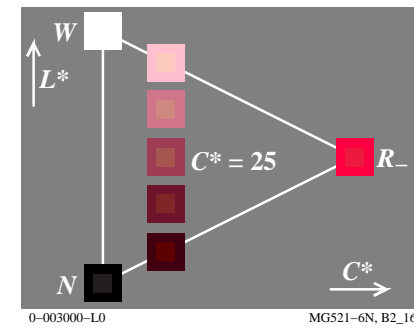
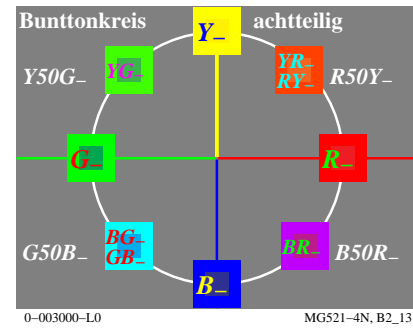
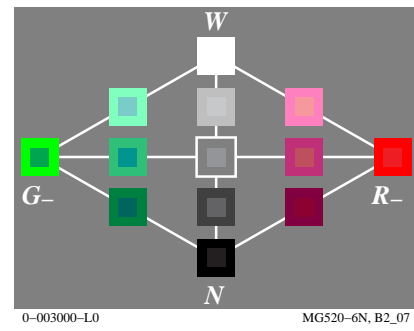
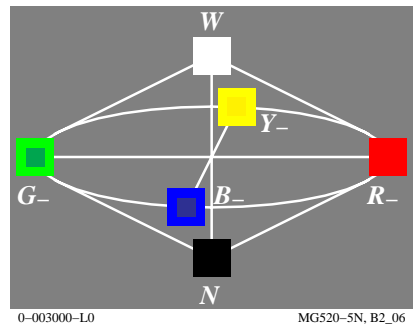
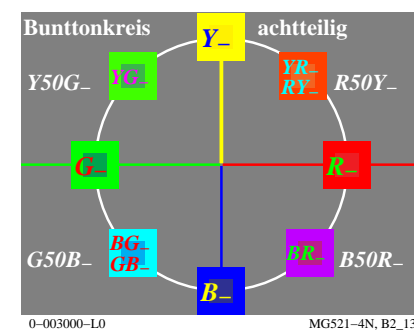
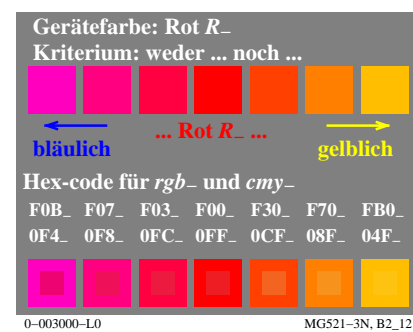
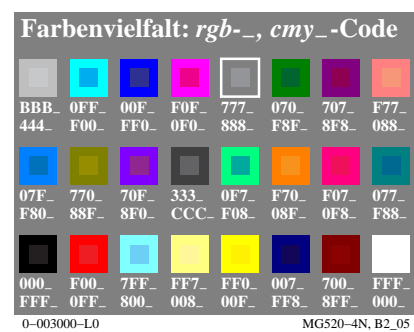
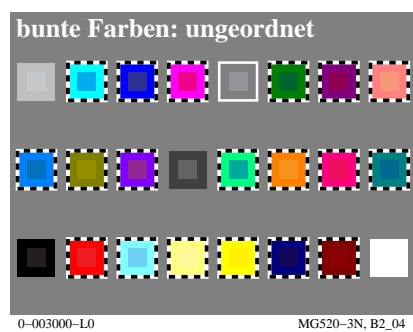
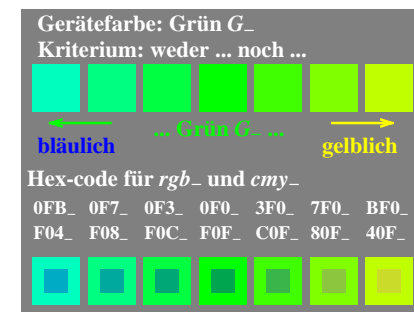
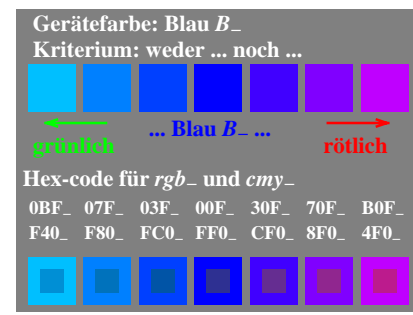
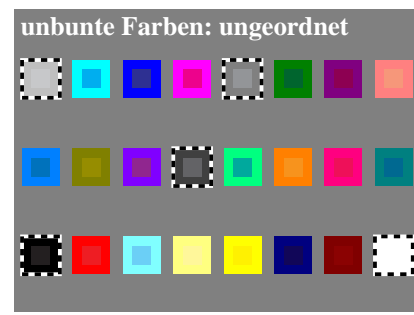
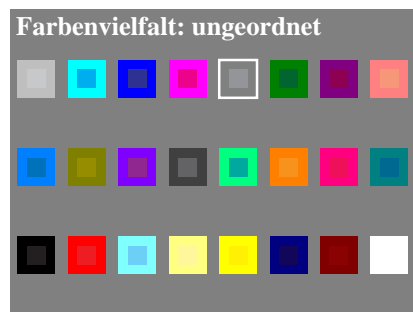
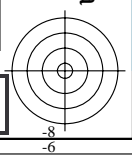
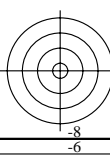
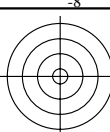


Siehe ähnliche Dateien: <http://farbe.li.tu-berlin.de/MG52/MG52.HTM>
<http://130.149.60.45/~farbmatrik> oder <http://farbe.li.tu-berlin.de>

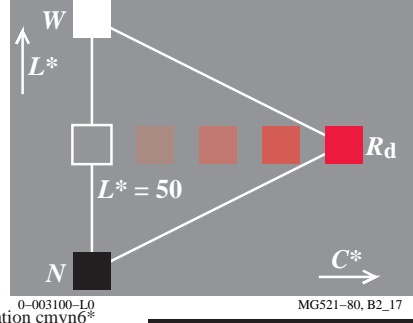
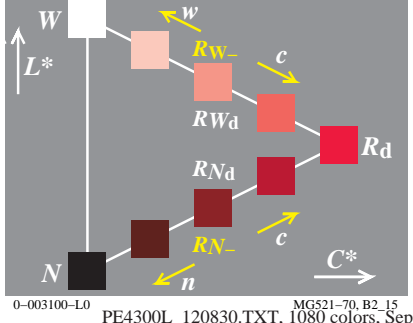
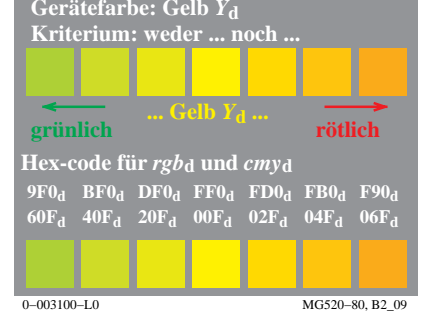
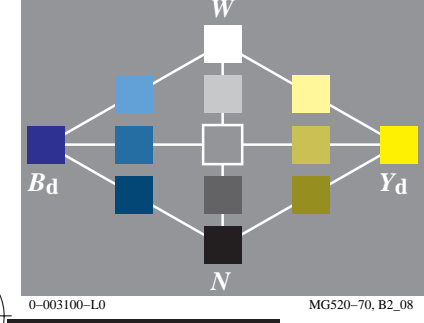
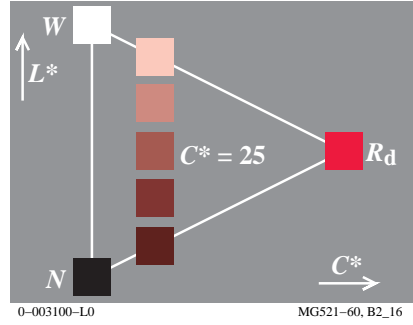
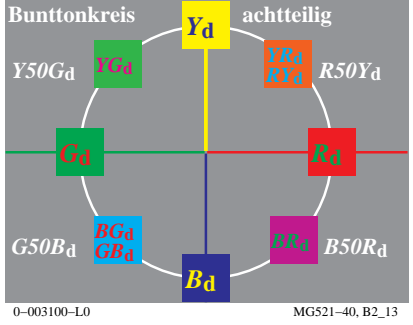
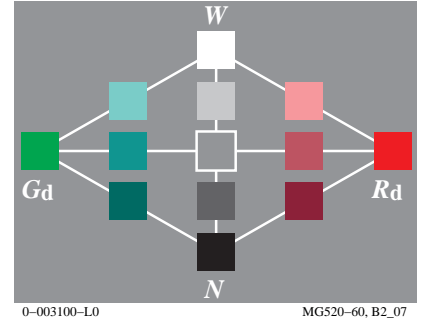
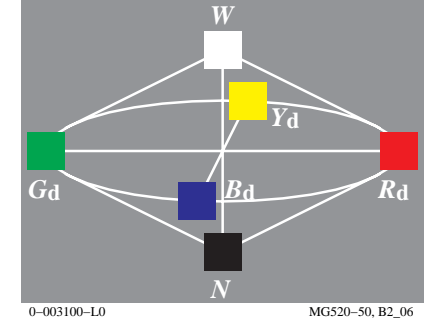
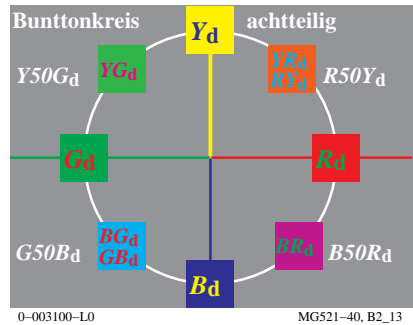
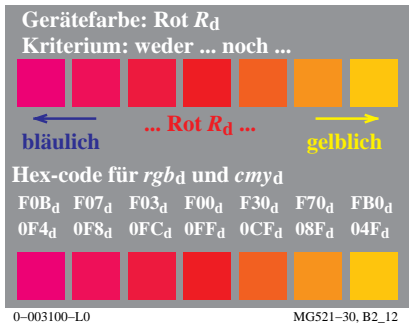
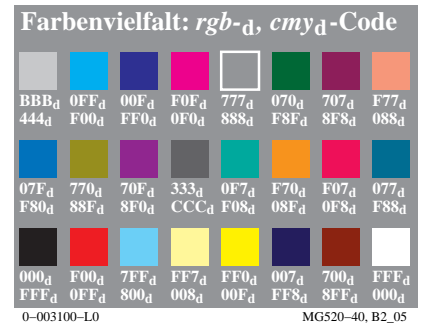
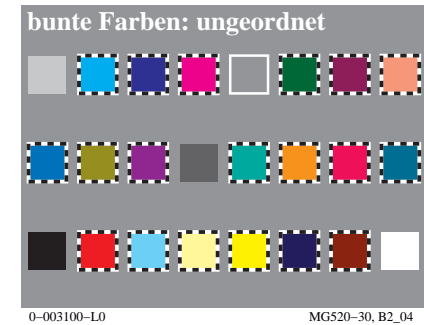
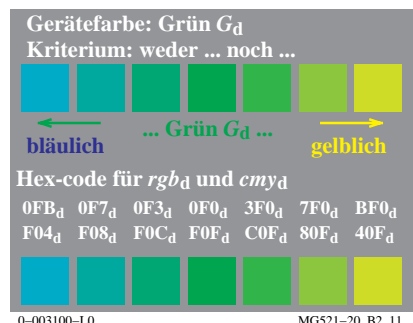
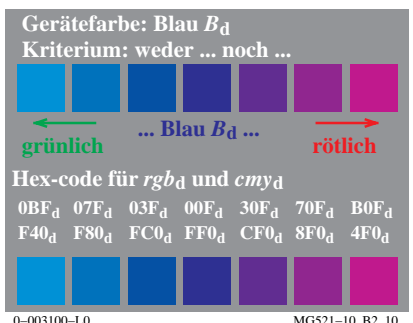
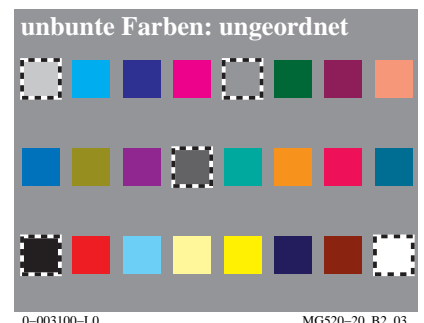
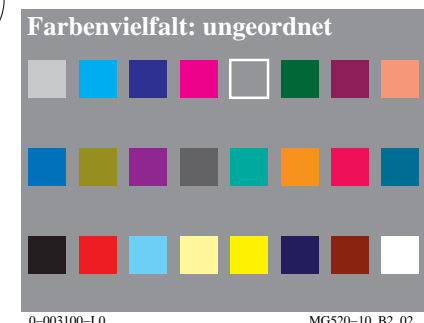
TUB-Registrierung: 20190801-MG52/MG52L0NP.PDF /.PS
Anwendung für Messung von Display-Ausgabe

TUB-Material: Code=rh4ta



Siehe ähnliche Dateien: <http://farbe.li.tu-berlin.de/MG52/MG52.HTM>
<http://130.149.60.45/~farbmetrik> oder <http://farbe.li.tu-berlin.de>

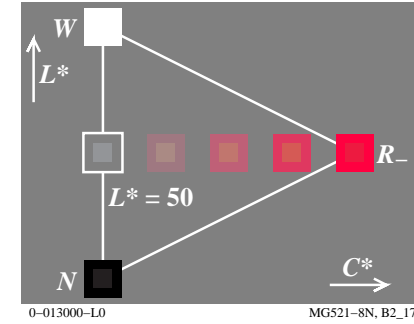
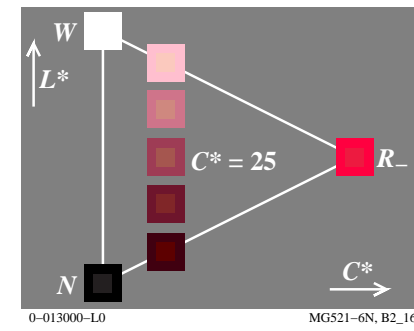
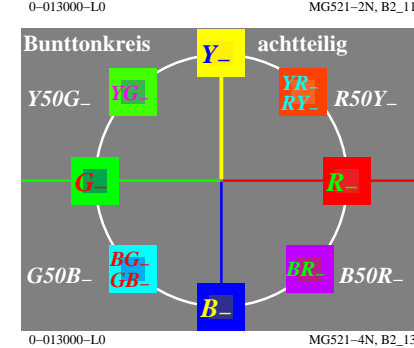
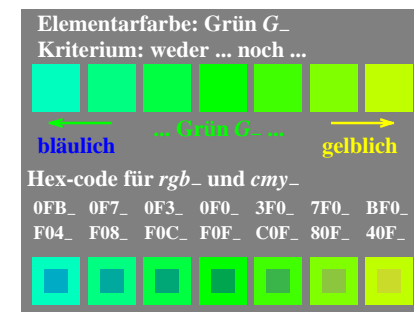
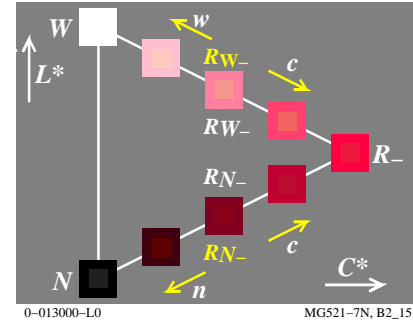
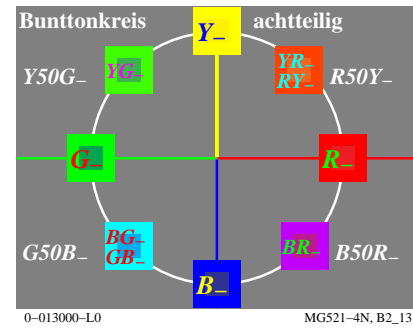
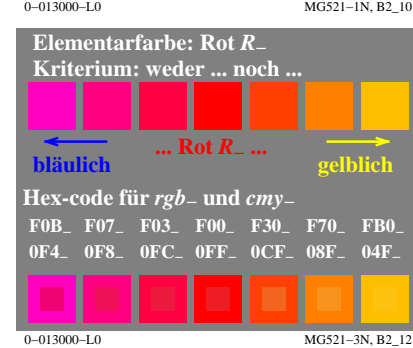
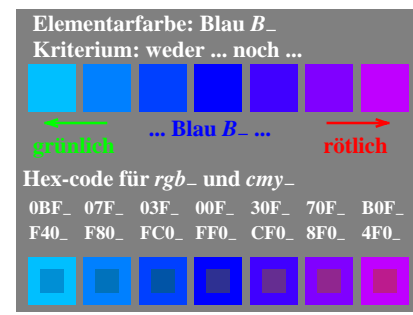
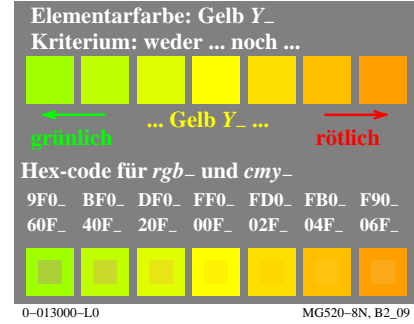
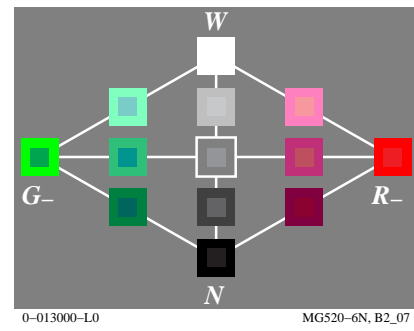
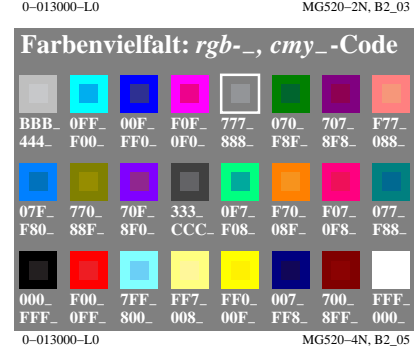
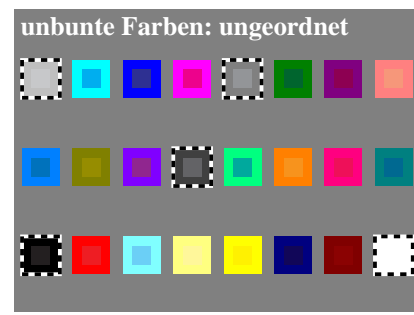
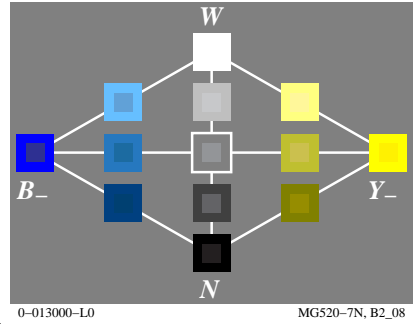
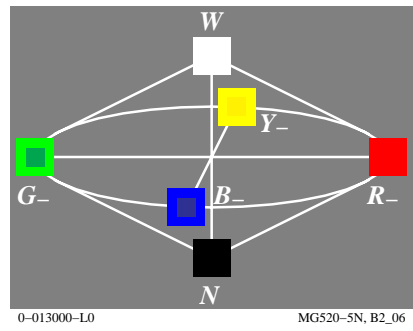
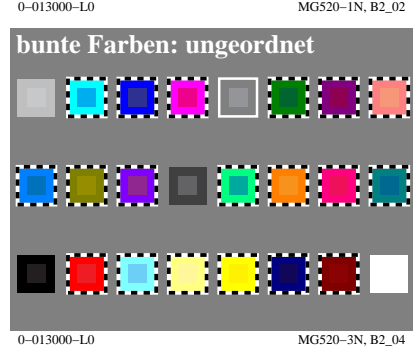
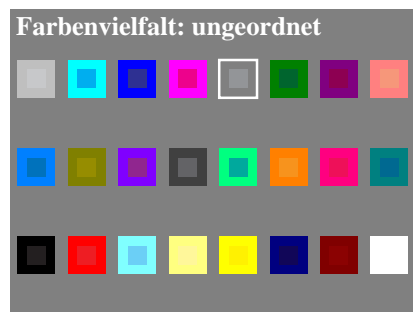
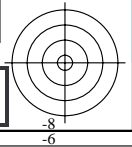
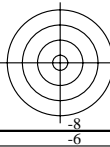
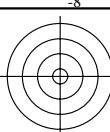
TUB-Registrierung: 20190801-MG52/MG52L0NP.PDF /.PS TUB-Material: Code=rh4ta
Anwendung für Messung von Display-Ausgabe, keine Separation



Siehe ähnliche Dateien: <http://farbe.li.tu-berlin.de/MG52/MG52.HTM>
<http://130.149.60.45/~farbmetrik> oder <http://farbe.li.tu-berlin.de>

TUB-Registrierung: 20190801-MG52/MG52L0NP.PDF /.PS
Anwendung für Messung von Display-Ausgabe

TUB-Material: Code=rh4ta



Siehe ähnliche Dateien: <http://farbe.li.tu-berlin.de/MG52/MG52.HTM>
<http://130.149.60.45/~farbmetrik> oder <http://farbe.li.tu-berlin.de>

TUB-Registrierung: 20190801-MG52/MG52L0NP.PDF /.PS TUB-Material: Code=rh4ta
Anwendung für Messung von Display-Ausgabe, keine Separation

