

http://farbe.li.tu-berlin.de/MI06/MI06L0N2.TXT /PS; inizio dell'output  
N: nessuna linearizzazione 3D (OL) nel file (F) o PS-startup (S), pagine 1/1

vedi file simili: http://farbe.li.tu-berlin.de/MI06/MI06.HTM  
http://130.149.60.45/~farbmtrik o http://farbe.li.tu-berlin.de

iscrizione TUB: 20160501-MI06/MI06L0N2.TXT /PS  
Applicazione per la misura dell'output su display

TUB materiale: code=rh4ta

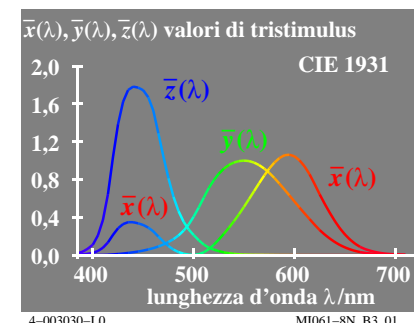
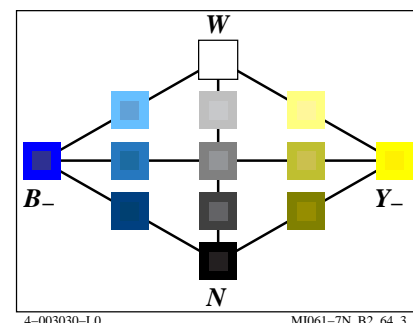
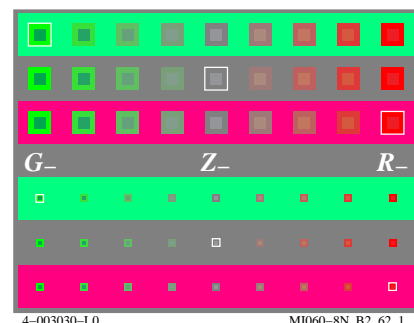
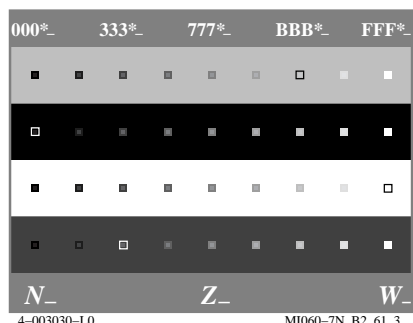
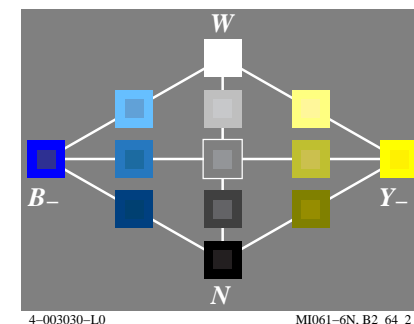
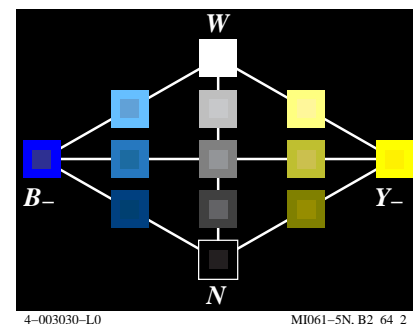
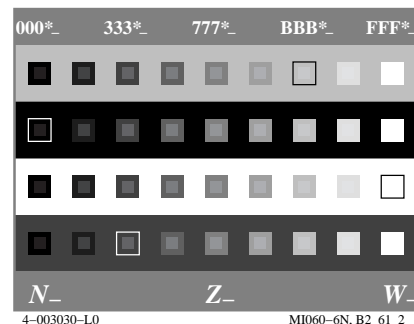
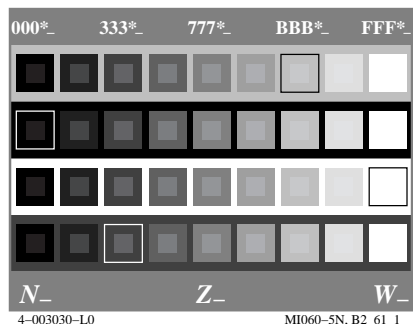
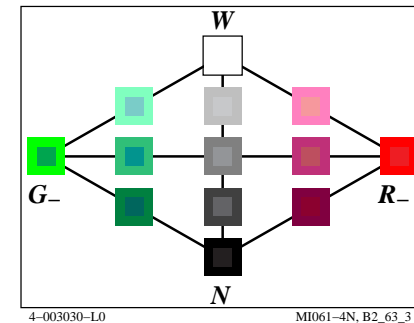
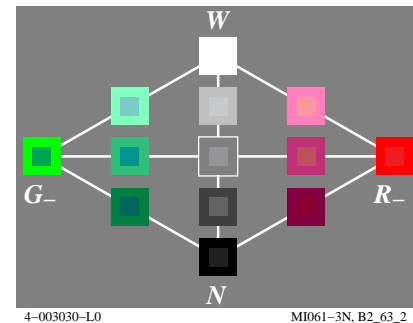
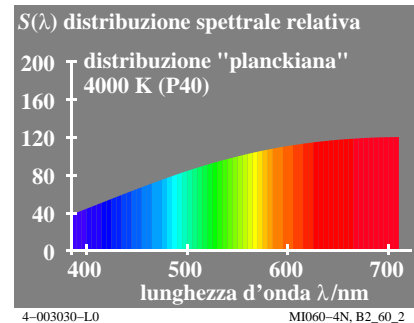
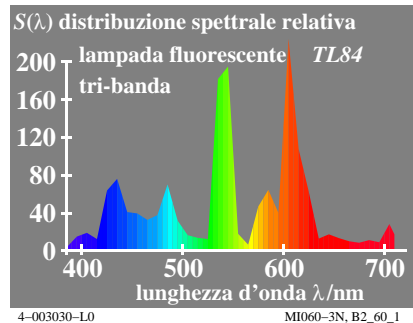
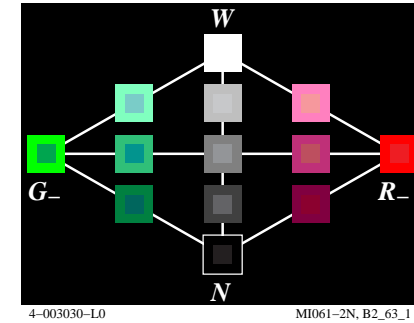
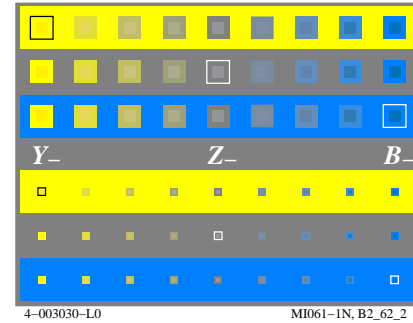
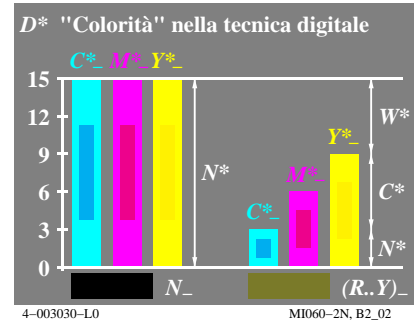
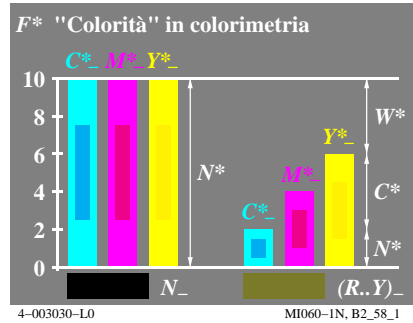
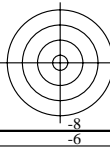
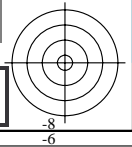
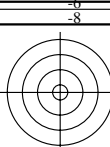


Grafico TUB-MI06; Grafica computerizzata e colorimetria  
Serie di immagini MI06, 3D=0, de=0

Input: *rgb/cmyk* -> *rgb/cmyk*  
Output: nessun cambiamento

