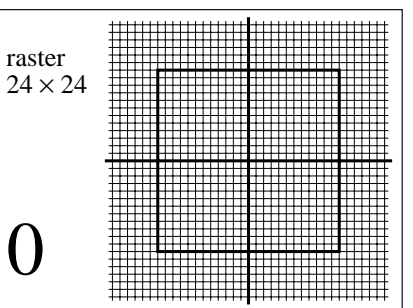


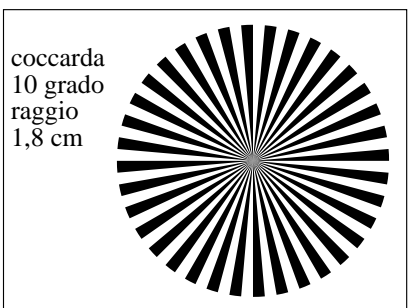
vedi file simili: <http://farbe.li.tu-berlin.de/MI97/MI97.HTM>  
<http://130.149.60.45/~farbmerrick> o <http://farbe.li.tu-berlin.de>

iscrizione TUB: 20190801-MI97/MI97L0FP.PDF /.PS  
Applicazione per la misura dell'output su display

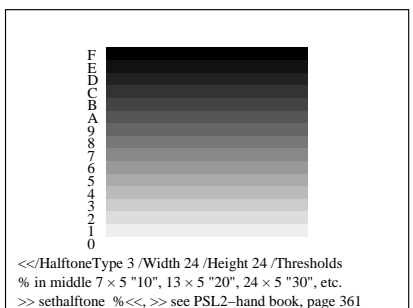
TUB materiale: code=rh4ta



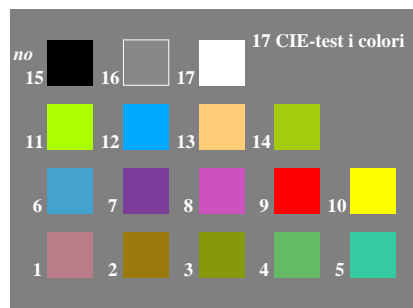
4-103000-L0 MI970-1N, BTe01



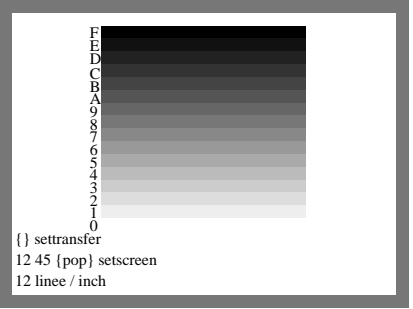
4-103000-L0 MI970-2N, BTe02



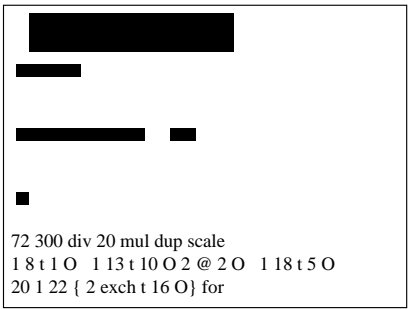
4-103000-L0 MI971-1N, BTe07



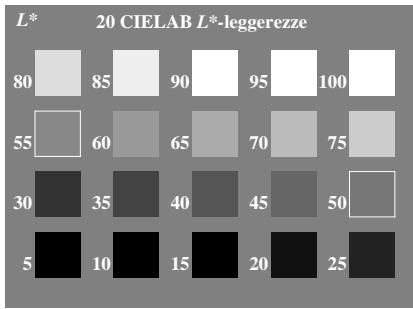
4-103000-L0 MI971-2N, BTe08



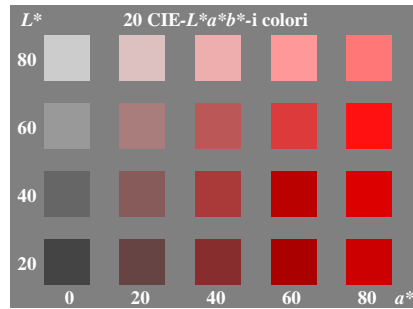
4-103000-L0 MI970-3N, BTe03



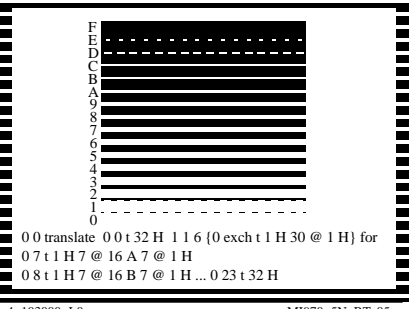
4-103000-L0 MI970-4N, BTe04



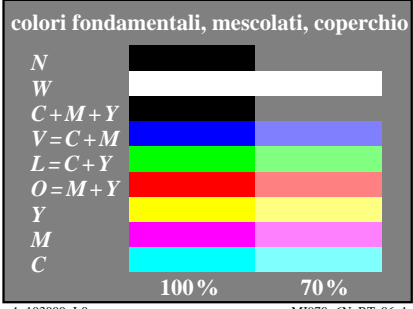
4-103000-L0 MI971-2N, BTe09



4-103000-L0 MI971-4N, BTe10



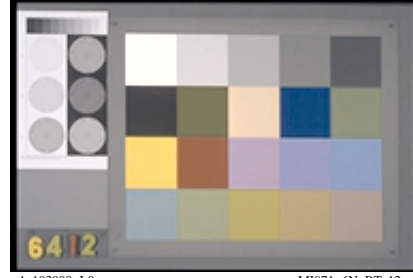
4-103000-L0 MI970-5N, BTe05



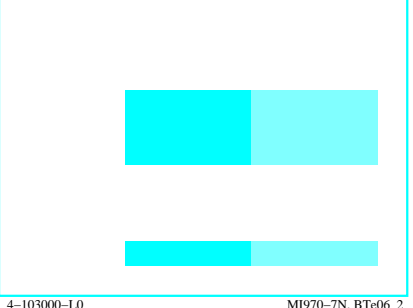
4-103000-L0 MI970-6N, BTe06\_1



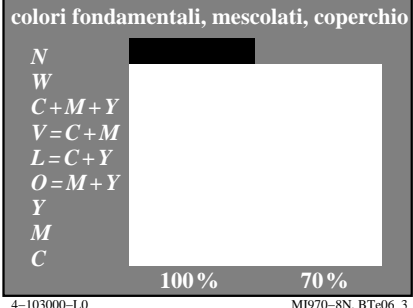
4-103000-L0 MI971-5N, BTe11



4-103000-L0 MI971-6N, BTe12



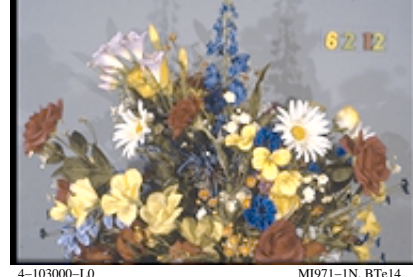
4-103000-L0 MI970-7N, BTe06\_2



4-103000-L0 MI970-8N, BTe06\_3



4-103000-L0 MI971-7N, BTe13



4-103000-L0 MI971-1N, BTe14

