

http://farbe.li.tu-berlin.de/MI97/MI97L0N2.TXT /.PS; inizio dell'output
N: nessuna linearizzazione 3D (OL) nel file (F) o PS-startup (S), pagine 1/1

vedi file simili: http://farbe.li.tu-berlin.de/MI97/MI97.HTM
http://130.149.60.45/~farbmetrik o http://farbe.li.tu-berlin.de

iscrizione TUB: 20190801-MI97/MI97L0N2.TXT /.PS
Applicazione per la misura dell'output su display

TUB materiale: code=rh4ta

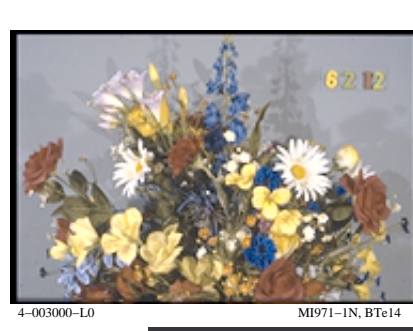
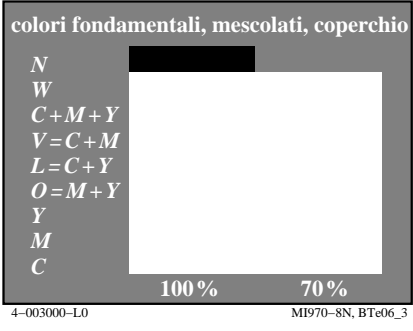
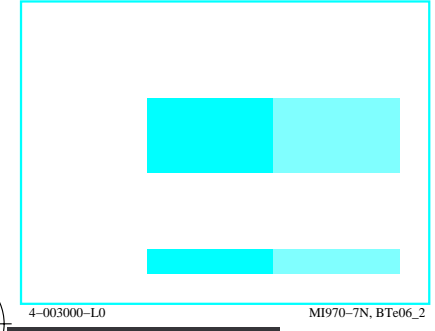
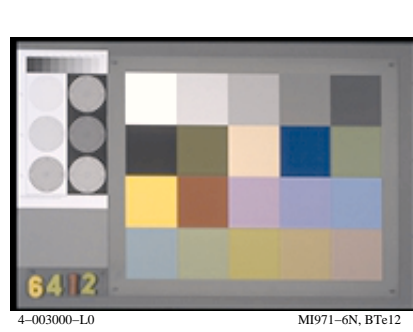
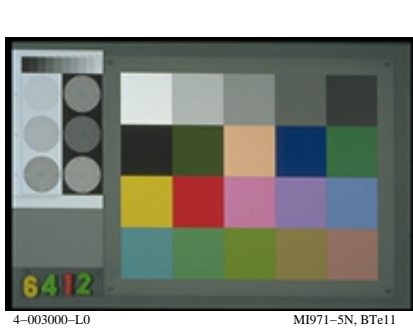
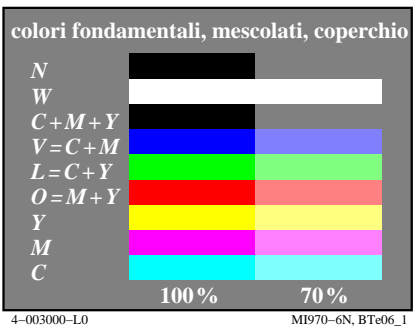
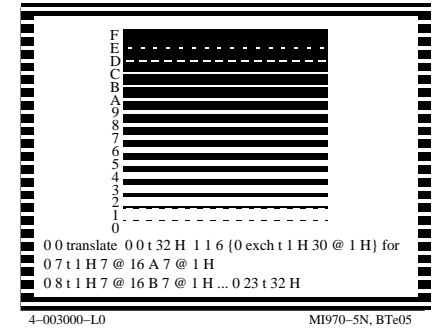
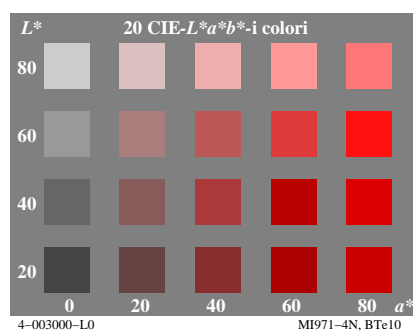
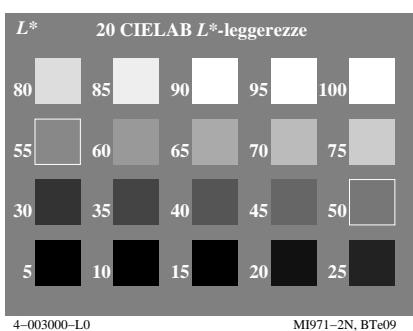
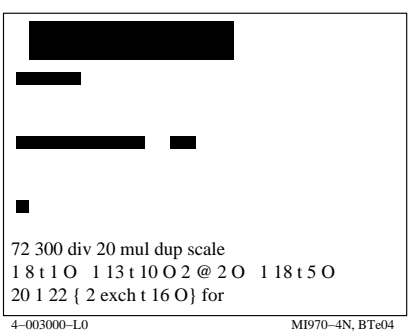
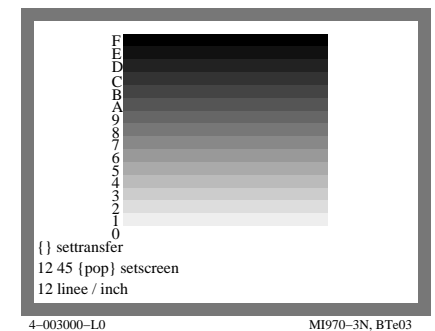
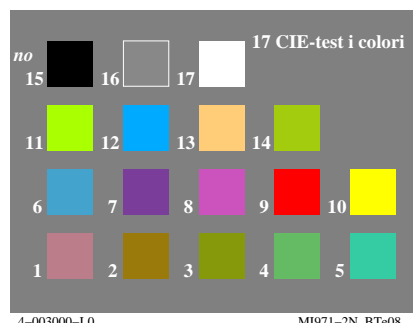
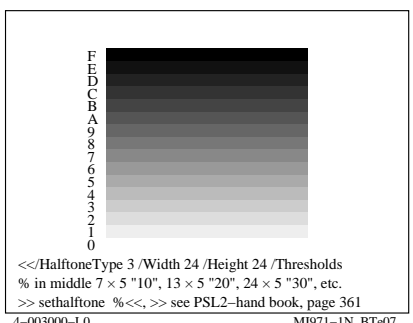
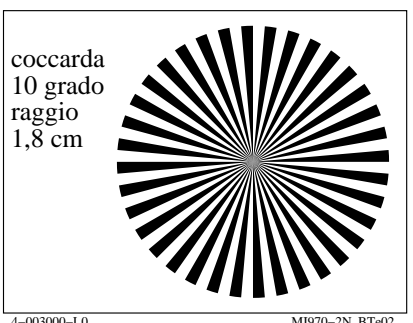
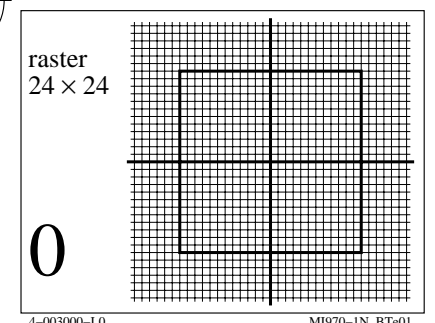
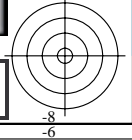
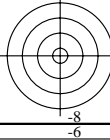
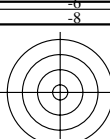


Grafico TUB-MI97; Grafica computerizzata e colorimetria
Serie di immagini MI97, 3D=0, de=0

Input: *rgb/cmyk* -> *rgb/cmyk*
Output: nessun cambiamento