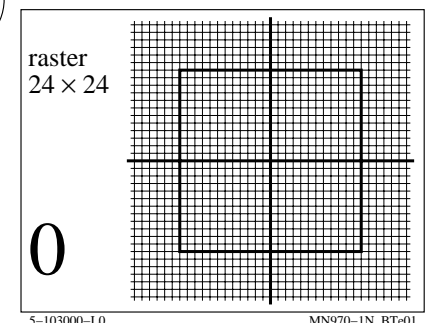
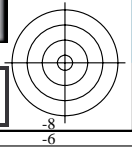
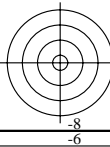
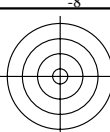


se lignende filer: <http://farbe.li.tu-berlin.de/MN97/MN97.HTM>
<http://130.149.60.45/~farbmetrik> eller <http://farbe.li.tu-berlin.de>

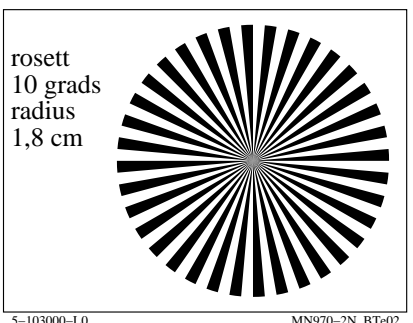
TUB registrering: 20190801-MN97/MN97L0FP.PDF /.PS
anvendelse for måling av display output

TUB materiell: code=rh4da



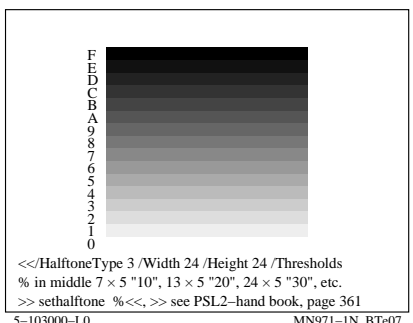
5-103000-L0

MN970-1N, BTe01



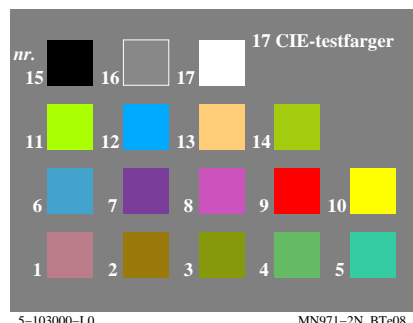
5-103000-L0

MN970-2N, BTe02



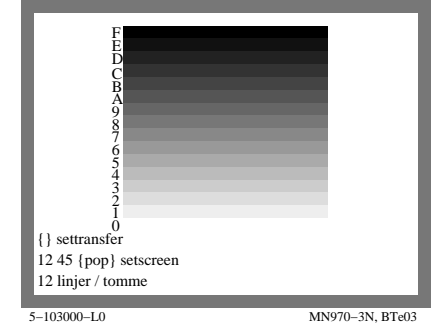
5-103000-L0

MN971-1N, BTe07



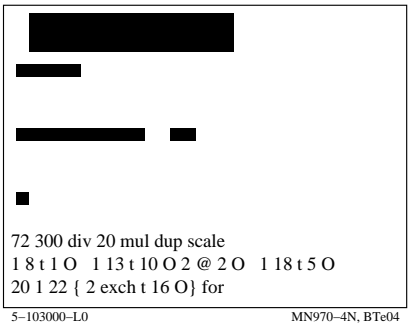
5-103000-L0

MN971-2N, BTe08



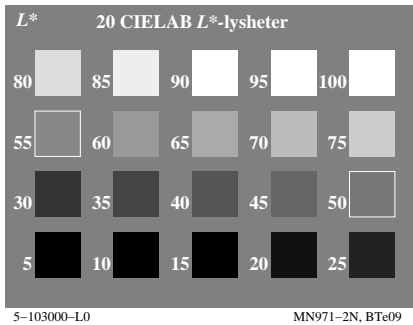
5-103000-L0

MN970-3N, BTe03



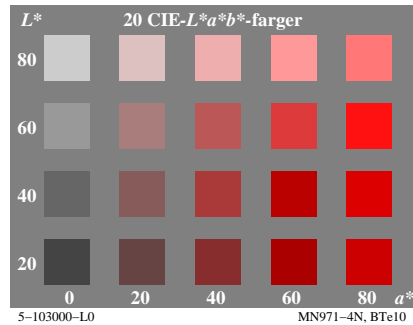
5-103000-L0

MN970-4N, BTe04



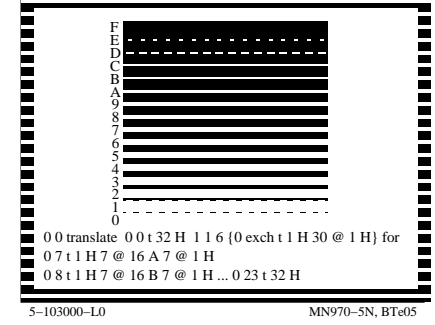
5-103000-L0

MN971-2N, BTe09



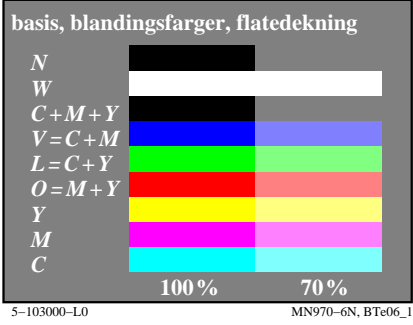
5-103000-L0

MN971-4N, BTe10



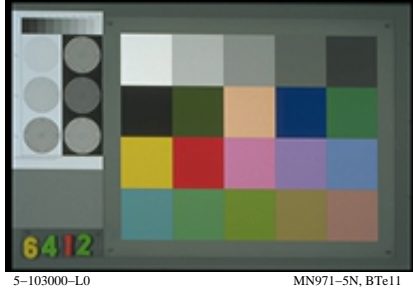
5-103000-L0

MN970-5N, BTe05



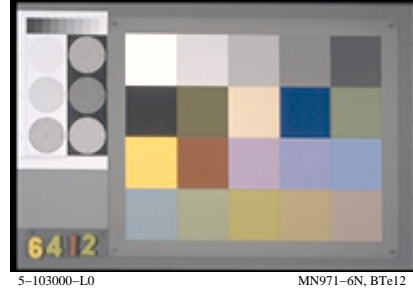
5-103000-L0

MN970-6N, BTe06_1



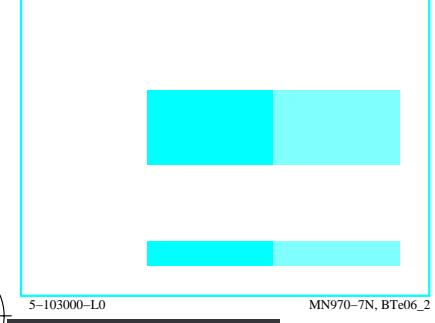
5-103000-L0

MN971-5N, BTe11



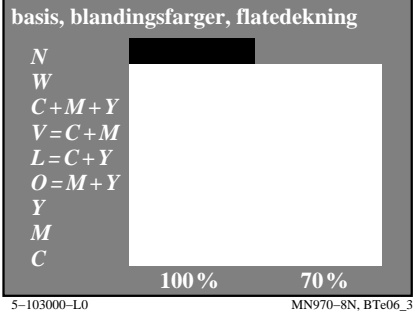
5-103000-L0

MN971-6N, BTe12



5-103000-L0

MN970-7N, BTe06_2



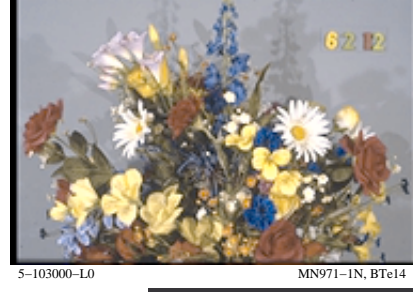
5-103000-L0

MN970-8N, BTe06_3



5-103000-L0

MN971-7N, BTe13



5-103000-L0

MN971-1N, BTe14

