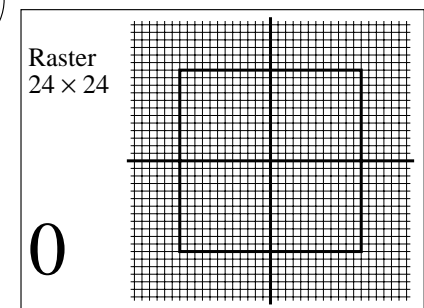
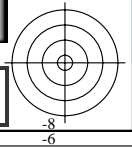
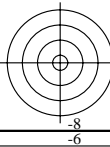
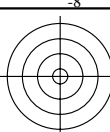


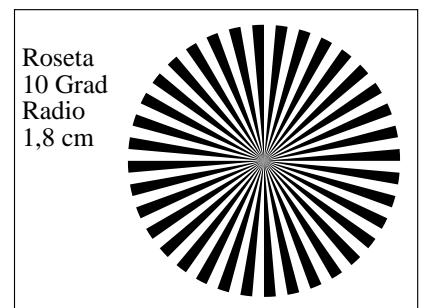
vea archivos semejantes: [http://130.149.60.45/~farbmetrik](http://farbe.li.tu-berlin.de/MS97/MS97.HTM) o <http://farbe.li.tu-berlin.de>

TUB matrícula: 20190801-MS97/MS97L0FA.TXT /.PS
aplicación para la medida de display output

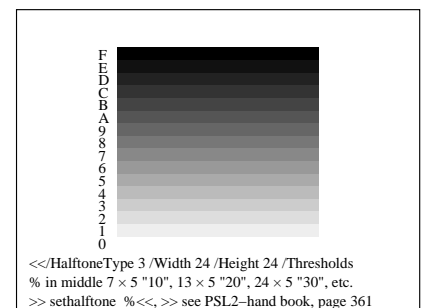
TUB material: code=rh4ta



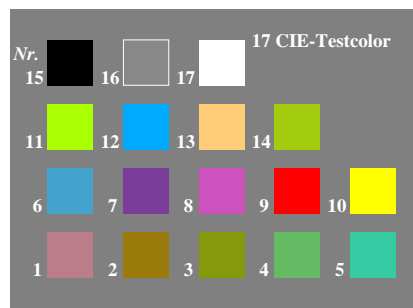
3-103000-L0 MS970-1N, BTe01



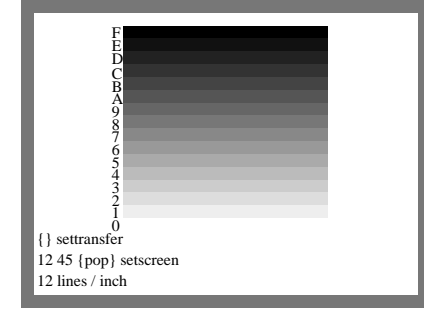
3-103000-L0 MS970-2N, BTe02



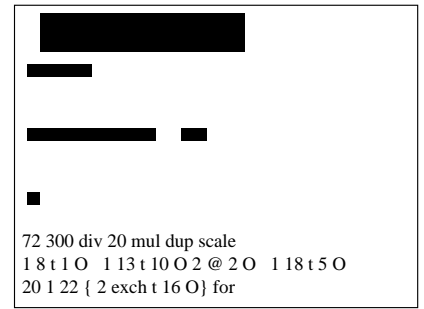
3-103000-L0 MS971-1N, BTe07



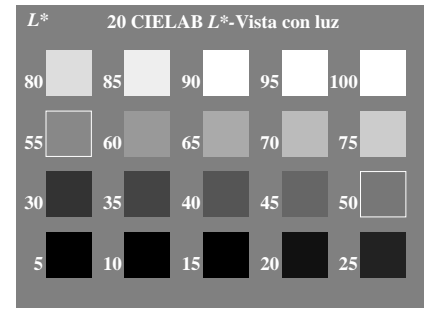
3-103000-L0 MS971-2N, BTe08



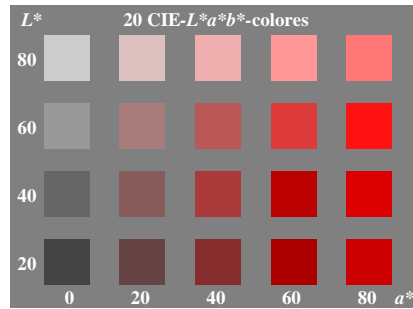
3-103000-L0 MS970-3N, BTe03



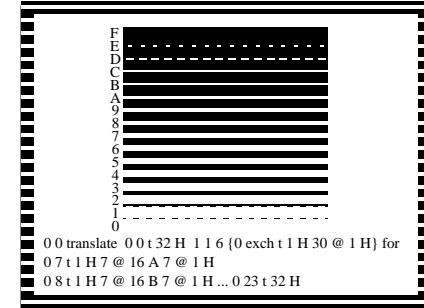
3-103000-L0 MS970-4N, BTe04



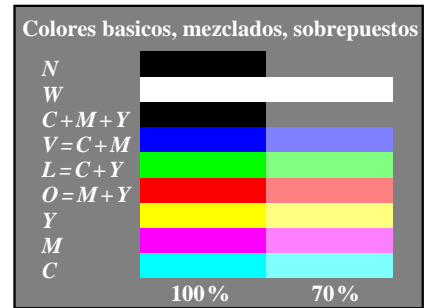
3-103000-L0 MS971-2N, BTe09



3-103000-L0 MS971-4N, BTe10



3-103000-L0 MS970-5N, BTe05



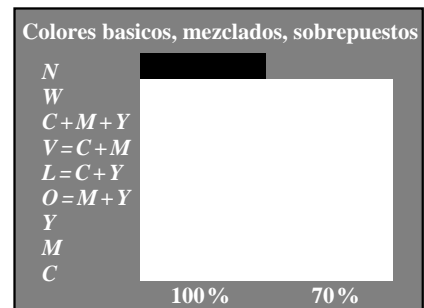
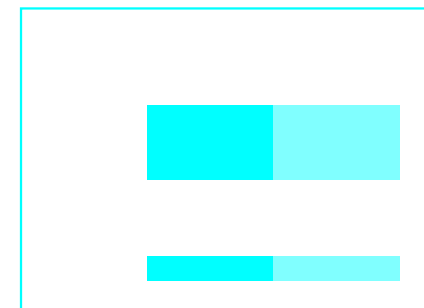
3-103000-L0 MS970-6N, BTe06_1



3-103000-L0 MS971-5N, BTe11



3-103000-L0 MS971-6N, BTe12



3-103000-L0 MS970-8N, BTe06_3



3-103000-L0 MS971-7N, BTe13



3-103000-L0 MS971-1N, BTe14

