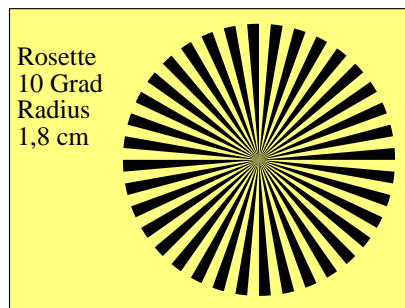


NG270-1, B8_02



NG270-2, B8_04

PSL1-Programmcode: Raster 24x24 mit Linien horizontal, vertikal und Text

```
!PS-Adobe-3.0 B8321-8n.eps 20.10.94
%%BoundingBox: 72 90 226 206
/FS {findfont exch scalefont setfont} bind def
/MM {72 25.4 div mul} def %Umrechnung Inch -> mm
%%EndProlog

%Nullpunkt Bounding-Box
72 90 translate

%Einheiten in 0,01 mm und Rahmen 5,4cm x 4,0cm
0.01 MM 0.01 MM scale
15 setlinewidth
0 0 moveto 5400 0 rlineto 0 4000 rlineto
-5400 0 rlineto closepath stroke

%Text und Zeichnen
10 setlinewidth 350 /Times-Roman FS
100 3250 moveto (Raster) show
100 2900 moveto (24x24) show
1000 /Times-Roman FS 100 500 moveto (0) show

% neuer Rastermittelpunkt und Nullpunkt
3300 2000 translate

% 36 Linien horizontal und vertikal
-1800 100 1800 {dup -1850 moveto 1850 lino} for stroke
-1800 100 1800 {dup -1850 exch moveto 1850 exch lino}
for stroke

% fetteres Quadrat und Nullkreuz
40 setlinewidth
-1200 -1200 moveto 2400 0 rlineto 0 2400 rlineto
-2400 0 rlineto closepath stroke
-1900 0 moveto 3800 0 rlineto stroke
0 -1900 moveto 0 3800 rlineto stroke

showpage
```

NG270-7, B8_03

PSL1-Teilprogrammcode: Text und Zeichnen Rosette (Siemensstern)

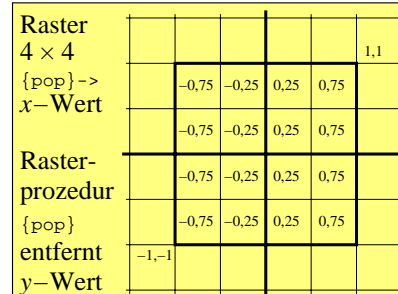
```
10 setlinewidth
350 /Times-Roman FS
100 3250 moveto (rosette) show
100 2900 moveto (10 degree) show
100 2550 moveto (radius) show
100 2200 moveto (1,8 cm) show

%Neuer Raster-Mittelpunkt und Nullpunkt
3300 2000 translate

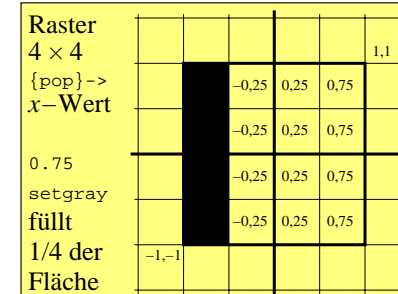
%Zeichnung Rosette, Radius 1,8 cm
0.0 setgray
0 10 350 {newpath 0 0 moveto 0 0 1800
4 -1 roll dup 5 add arc closepath fill} for

showpage
```

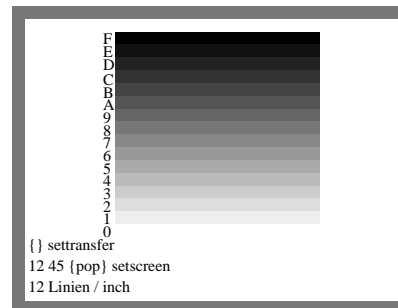
NG271-3, B8_05



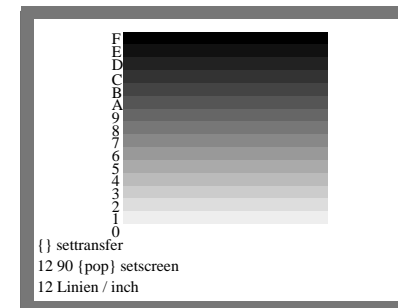
NG271-5, B8_06_1



NG271-6, B8_06_2



NG271-7, B8_07_1



NG271-8, B8_07_2