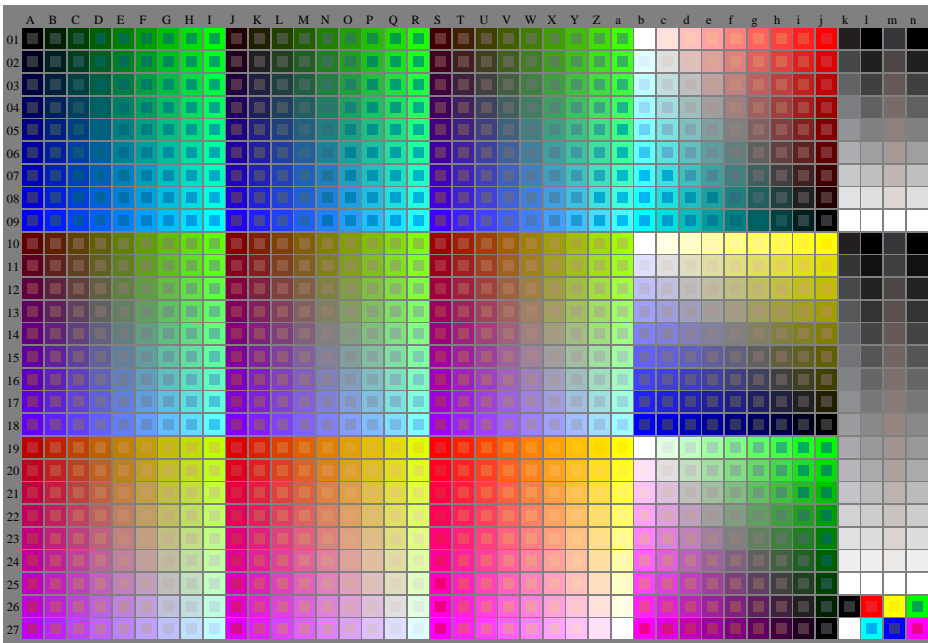


See original or copy: http://web.me.corn.klaus_richter/LE78/LE78L0NA.TXT /PS
Technical information: <http://www.ps.bam.de> or <http://130.149.60.45/~farbmetrik>

TUB registration: 20110301-LE78/LE78L0NA.TXT /PS
application for measurement of printer or monitor systems

TUB material: code=ra4ta



LE780-7N, 1/11, Test chart G with 40x27=1080 colours; digital equidistant 9 or 16 step colour scales; Colour data in column (A-n): **rgb + cmy0 (A_j + k26_n27), 000n (k), w (l), nnn0 (m), www (n), colorm = 0, separation = A**

TUB-test chart LE78: Colorimetric system G, Page 1/1
input: *rgb/000n/w/nnn0/www*
output: no change compared to input