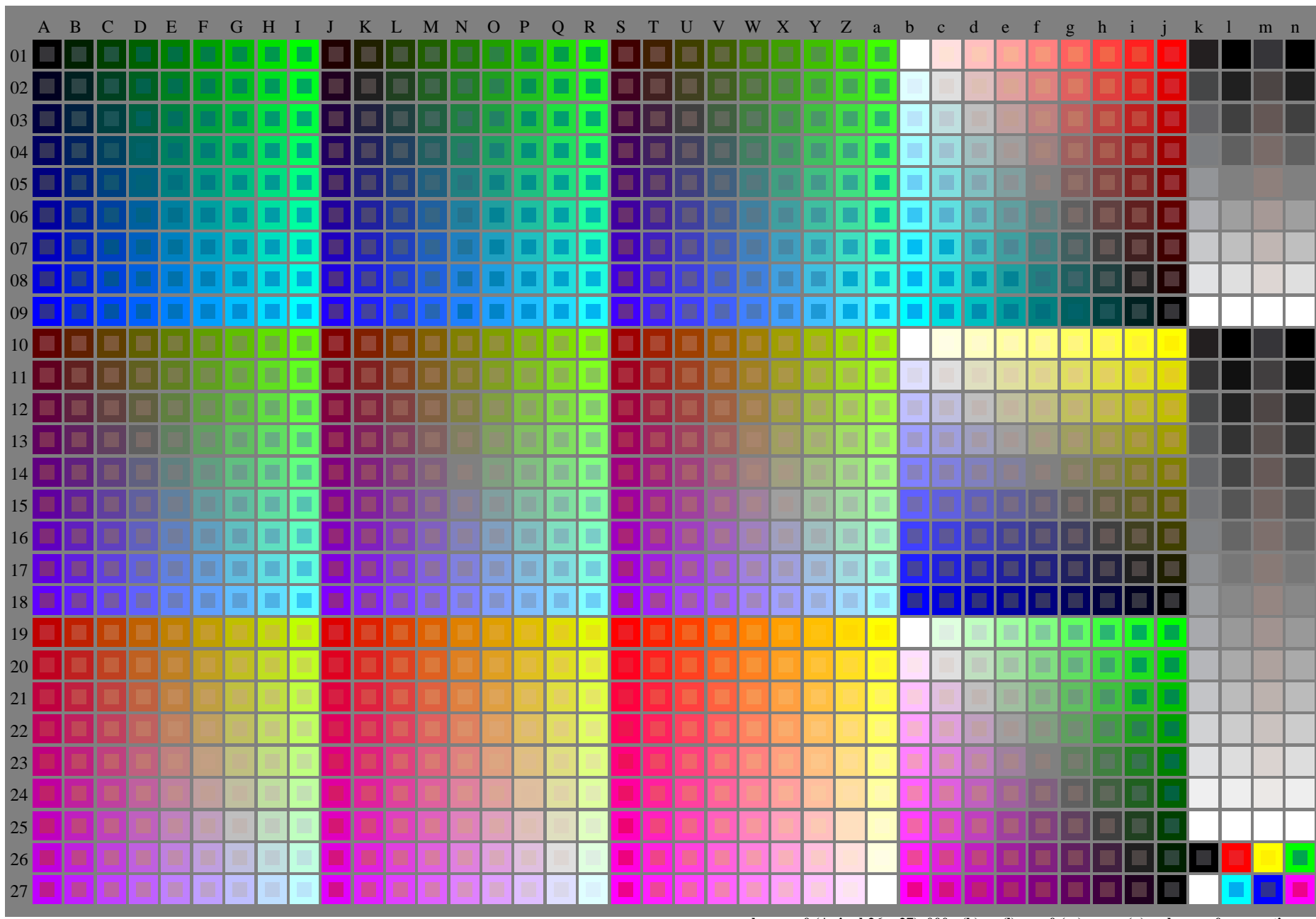


http://130.149.60.45/~farbmetrik/LE78/LE78L0NA.TXT /.PS; start output
N: No Output Linearization (OL) data in File (F), Startup (S) or Device (D)

See original or copy: <http://web.me.com/klaus.richter/LE78/LE78L0NA.TXT> /.PS
Technical information: <http://www.ps.barn.de> or <http://130.149.60.45/~farbmetrik>

TUB registration: 20110301-LE78/LE78L0NA.TXT /.PS
application for measurement of printer or monitor systems

TUB material: code=rh4ta



LE780-7N, 1/11, Test chart G with 40x27=1080 colours; digital equidistant 9 or 16 step colour scales; Colour data in column (A-n): **rgb + cmy0** (A_j + k26_n27), 000n (k), w (l), nnn0 (m), www (n), colorm = 0, separation = A

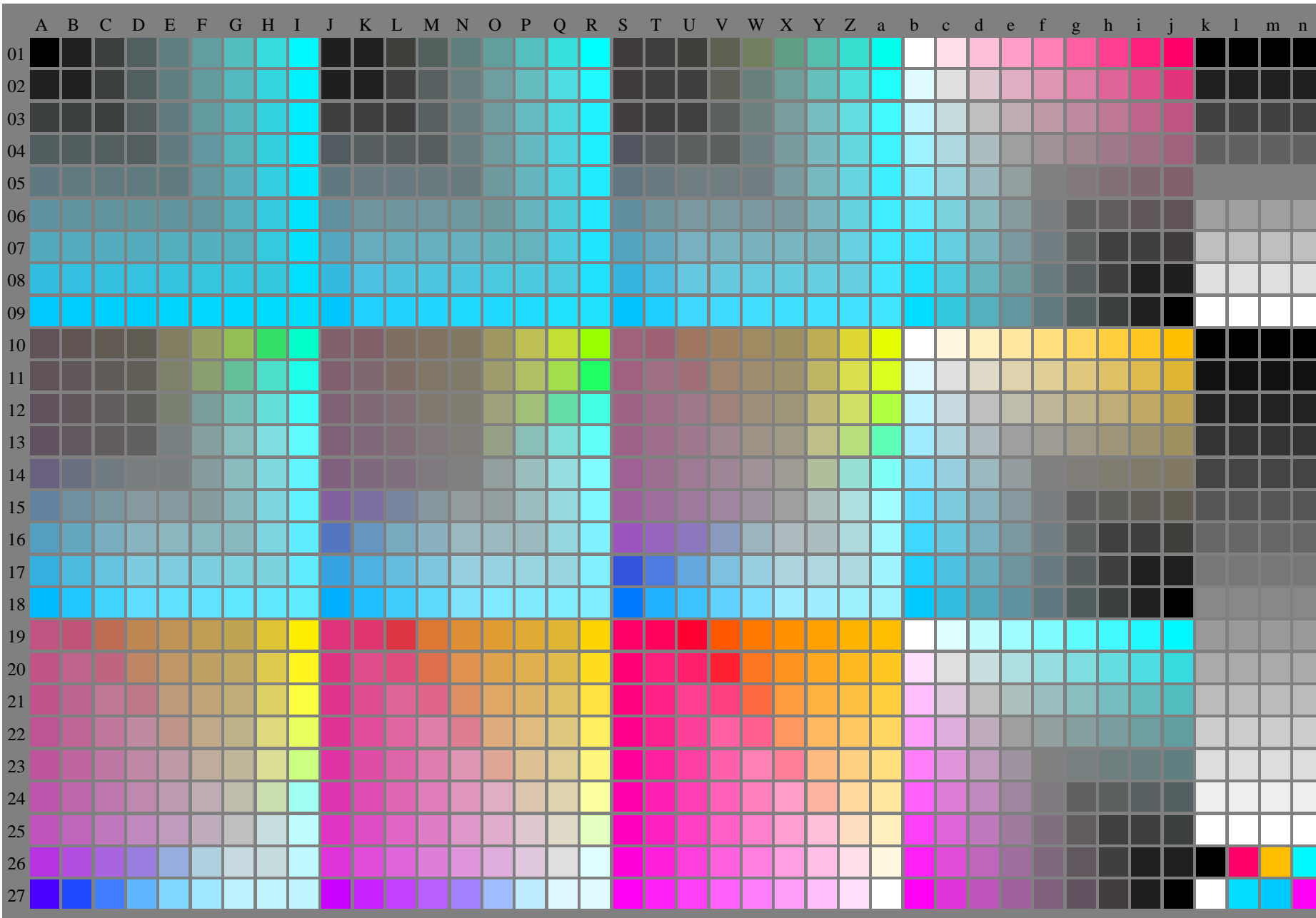
TUB-test chart LE78; Colorimetric system G, Page 1/1
40x27=1080 colours for Measurement: **rgb/000n/w/nnn0/www** input: **rgb/000n/w/nnn0/www**
output: no change compared to input

http://130.149.60.45/~farbmetrik/LE78/LE78L0NA.TXT /.PS; start output
N: No Output Linearization (OL) data in File (F), Startup (S) or Device (D)

See original or copy: <http://web.me.com/klaus.richter/LE78/LE78L0NA.TXT> /.PS
Technical information: <http://www.ps.barn.de> or <http://130.149.60.45/~farbmetrik>

TUB registration: 20110301-LE78/LE78L0NA.TXT /.PS
application for measurement of printer or monitor systems

TUB material: code=rh4ta



LE780-7N, 1/11, Test chart G with 40x27=1080 colours; digital equidistant 9 or 16 step colour scales; Colour data in column (A-n): **rgb*** (A_n), **colorm = 1**, **separation = A**, **cmly0***

TUB-test chart LE78; Colorimetric system G, Page 1/1

input: *rgb/000n/w/nnn0/www*

40x27=1080 colours for Measurement: *rgb/000n/w/nnn0/www*

output: no change compared to input