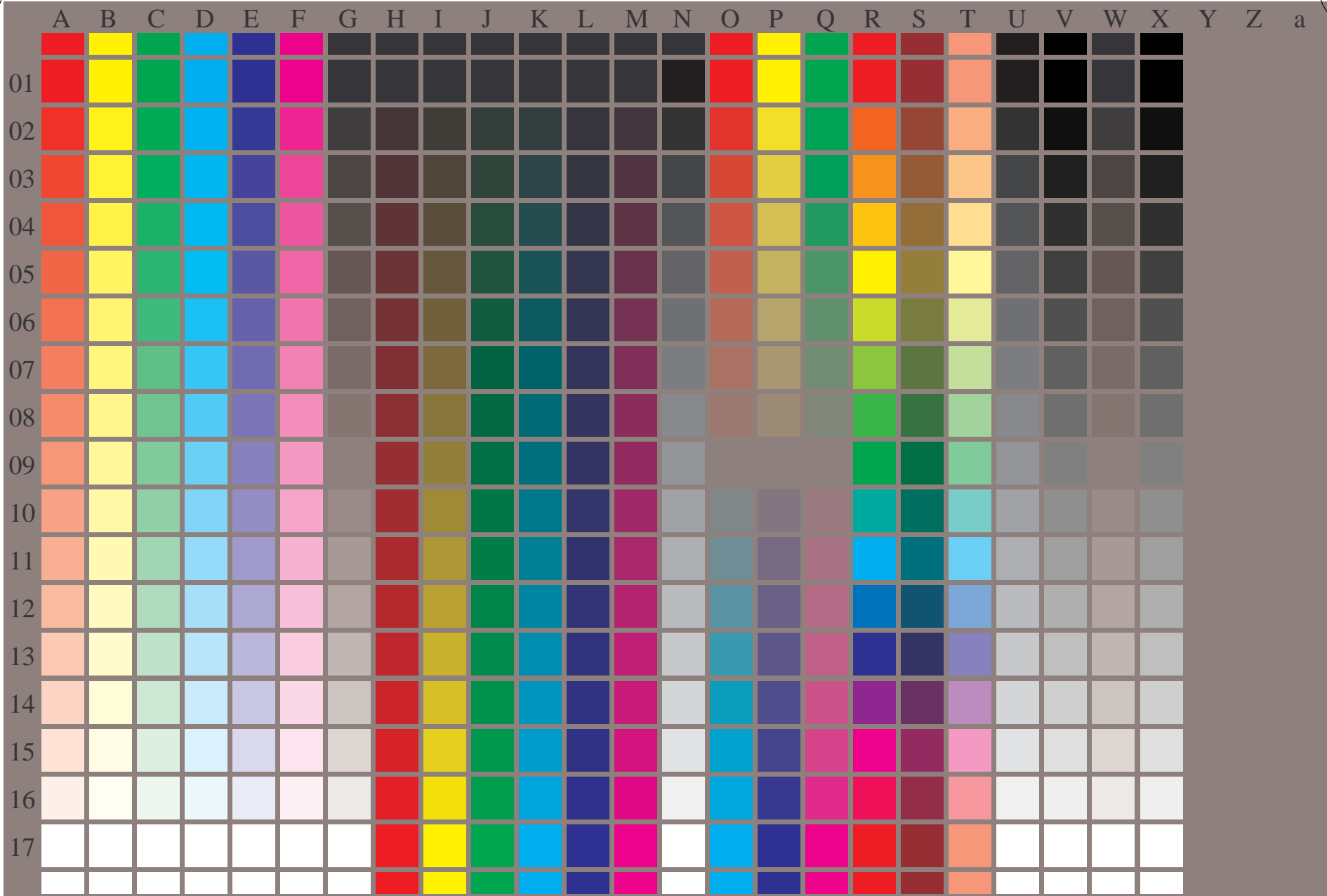


See similar ISO test charts: <http://www.ps.bam.de/24705TE> ; <http://www.ps.bam.de/9241E>
Technical information: <http://www.ps.bam.de/33872E> Version 2.1, io=1,1

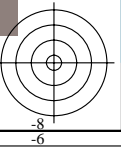
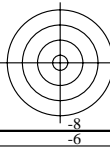
TUB registration: 20110801-OE71/OE71L0NA.TXT /PS
application for output of displays: monitor systems or data projector systems
TUB material: code=rh4ta

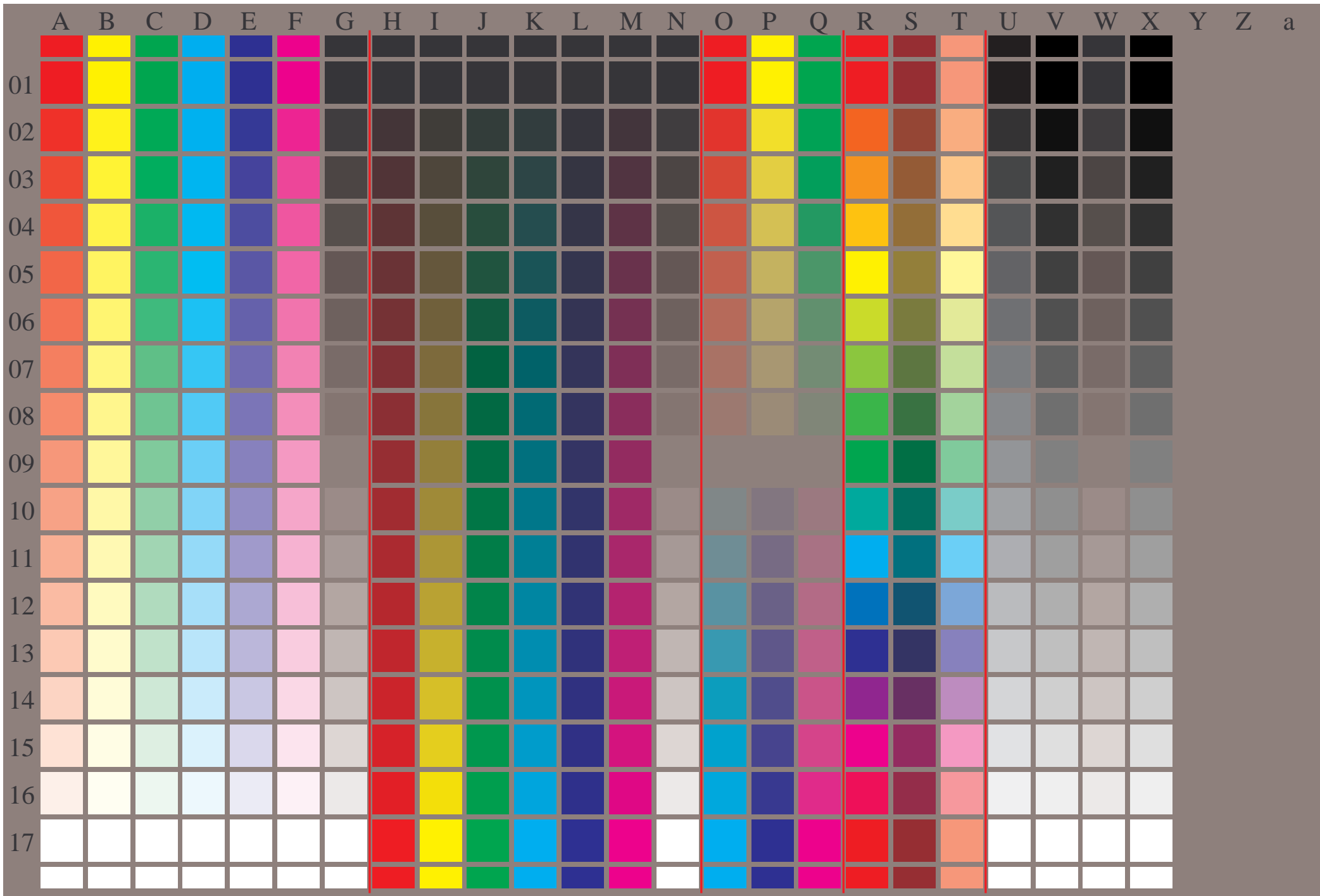


OE710-7N-020-0: Test chart with 24x17=408 colours and digital equidistant 17 step colour scales; compare ISO/IEC 15775:1999; rgb colour data, patch size and grey layout: 8mm x 8mm, 247mm x 170mm, Page 1/3

OE71: Test chart 2 according to DIN 33872-1; DH
17 step equally spaced colours and three hue circles

input: *cmY0* (->*cmY0**_D) *setcmyk*
output 020-0: no change





See similar ISO test charts: <http://www.ps.bam.de/24705TE>; <http://www.ps.bam.de/9241E>
 Technical information: <http://www.ps.bam.de/33872E> Version 2.1, io=1,1

i	LAB*ref	l*out	LAB*out	LAB*out/c-ref	ΔE^*
1	0.0	0.0	0.0	0.0	0.01
2	6.36	0.0	0.07	6.36	0.01
3	12.72	0.0	0.13	12.72	0.01
4	19.08	0.0	0.2	19.08	0.01
5	25.44	0.0	0.27	25.44	0.01
6	31.8	0.0	0.33	31.8	0.01
7	38.16	0.0	0.4	38.16	0.01
8	44.52	0.0	0.47	44.52	0.01
9	50.89	0.0	0.53	50.89	0.01
10	57.25	0.0	0.6	57.25	0.01
11	63.61	0.0	0.67	63.61	0.01
12	69.97	0.0	0.73	69.97	0.01
13	76.33	0.0	0.8	76.33	0.01
14	82.69	0.0	0.87	82.69	0.01
15	89.05	0.0	0.93	89.05	0.01
16	95.41	0.0	1.0	95.41	0.01
17	0.0	0.0	0.0	0.0	0.01
18	23.85	0.0	0.25	23.85	0.01
19	47.71	0.0	0.5	47.71	0.01
20	71.56	0.0	0.75	71.56	0.01
21	95.41	0.0	1.0	95.41	0.01

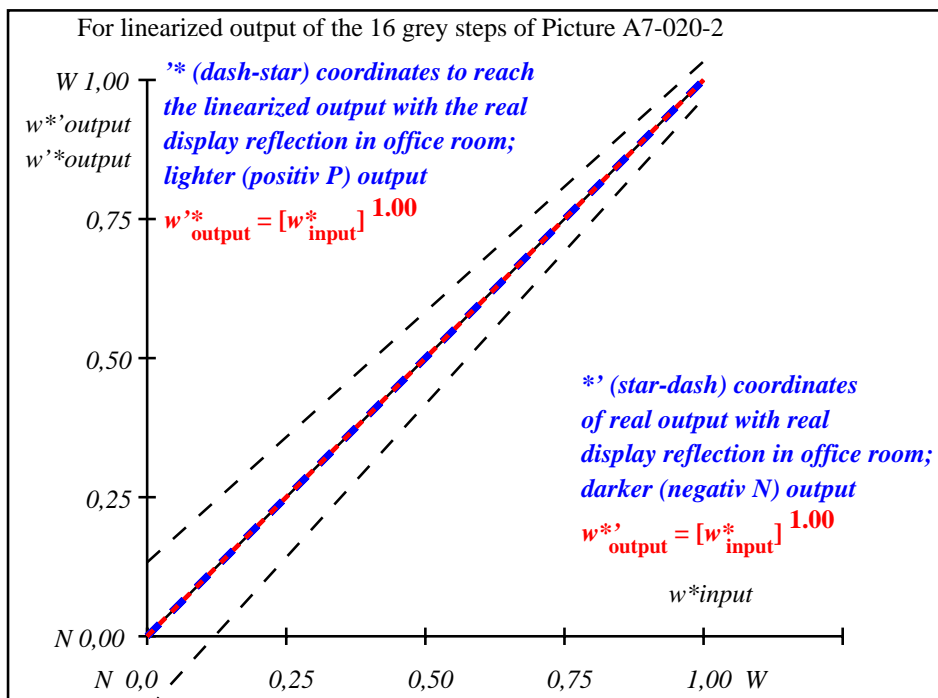
Start output S1
Specification according to ISO/IEC 15775 Annex G and DIN 33866-1 Annex G

Mean lightness difference (16 steps)
 $\Delta E^*_{CIELAB} = 0.0$

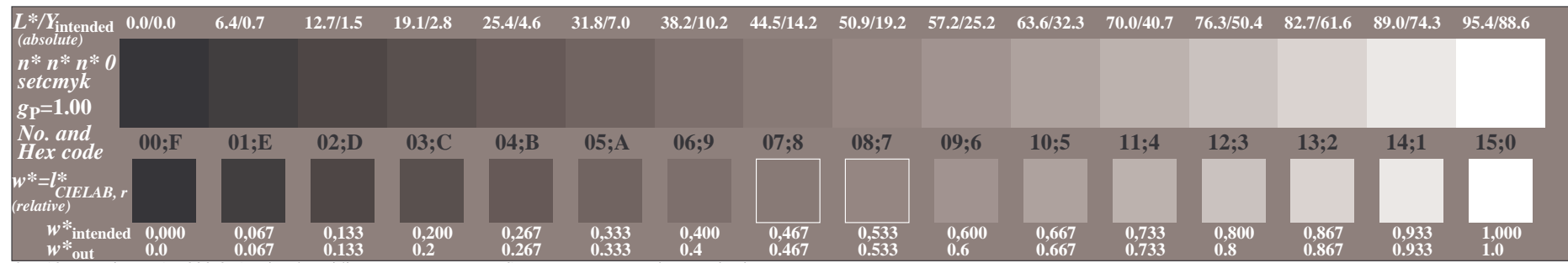
Mean lightness difference (5 steps)
 $\Delta L^*_{CIELAB} = 0.0$

Mean colour reproduction index: $R^*_{ab,m} = 100$

OE710-3N-020-2: File: Measure unknown; Device: Device unknown; Date: Date unknown



OE711-3N-020-2: File: Measure unknown; Device: Device unknown; Date: Date unknown



OE710-7N, Picture A7-020-2: 16 visual equidistant L^* -grey steps; PS operator: $n^* n^* n^* 0$ setcmykcolor

OE71: In-output relation according to ISO 9241-306; DH
 Viewing Y contrast $Y_W:Y_N=88,9:0,31$; Y_N range 0,0 to <0,46

input: cmy0 (->cmy0*_d) setcmyk
 output 020-2: no change

TUB registration: 20110801-OE71/OE71L0NA.TXT /.PS
 application for output of displays: monitor systems or data projector systems
 TUB material: code=rh4ta