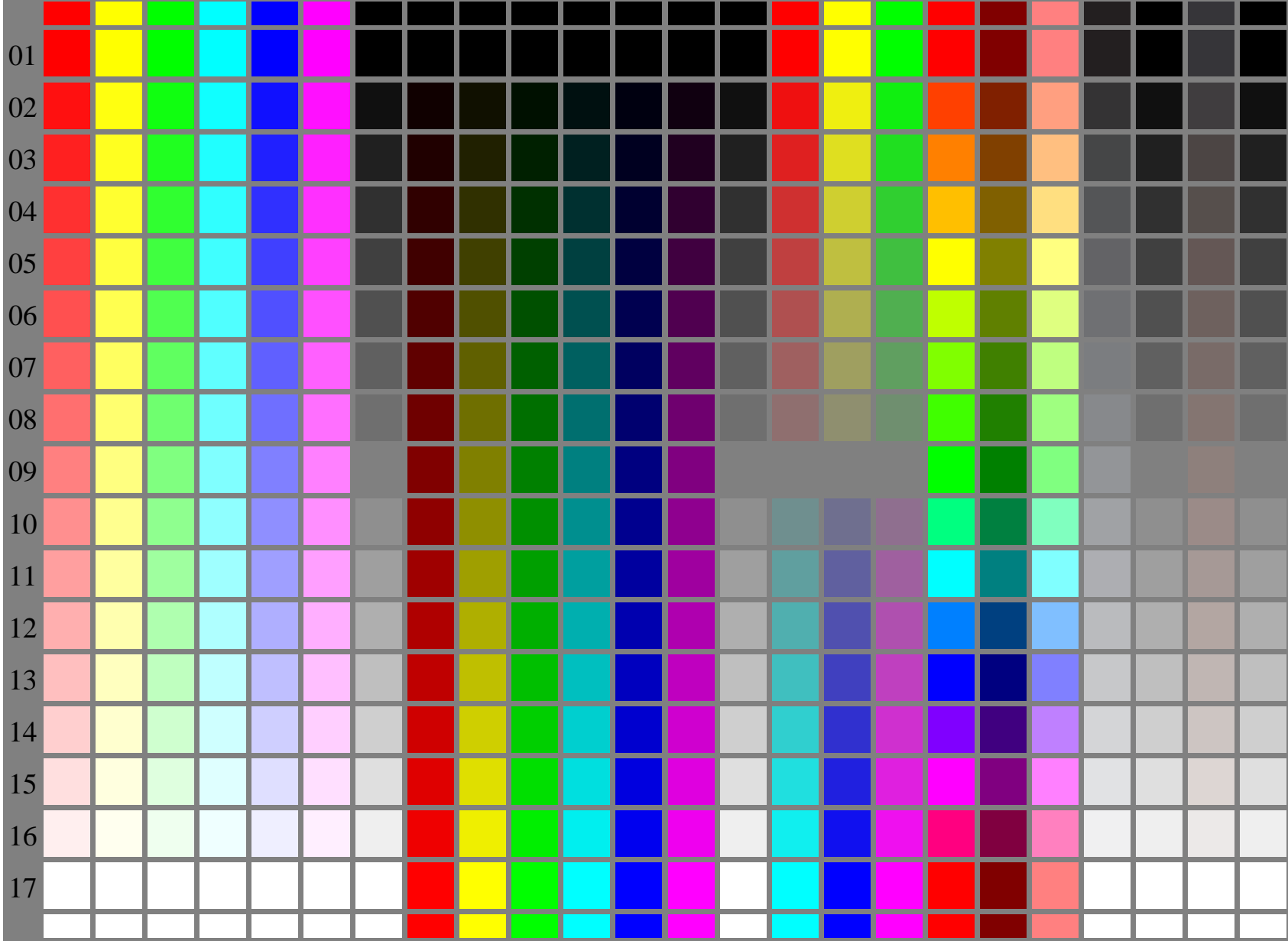
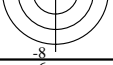


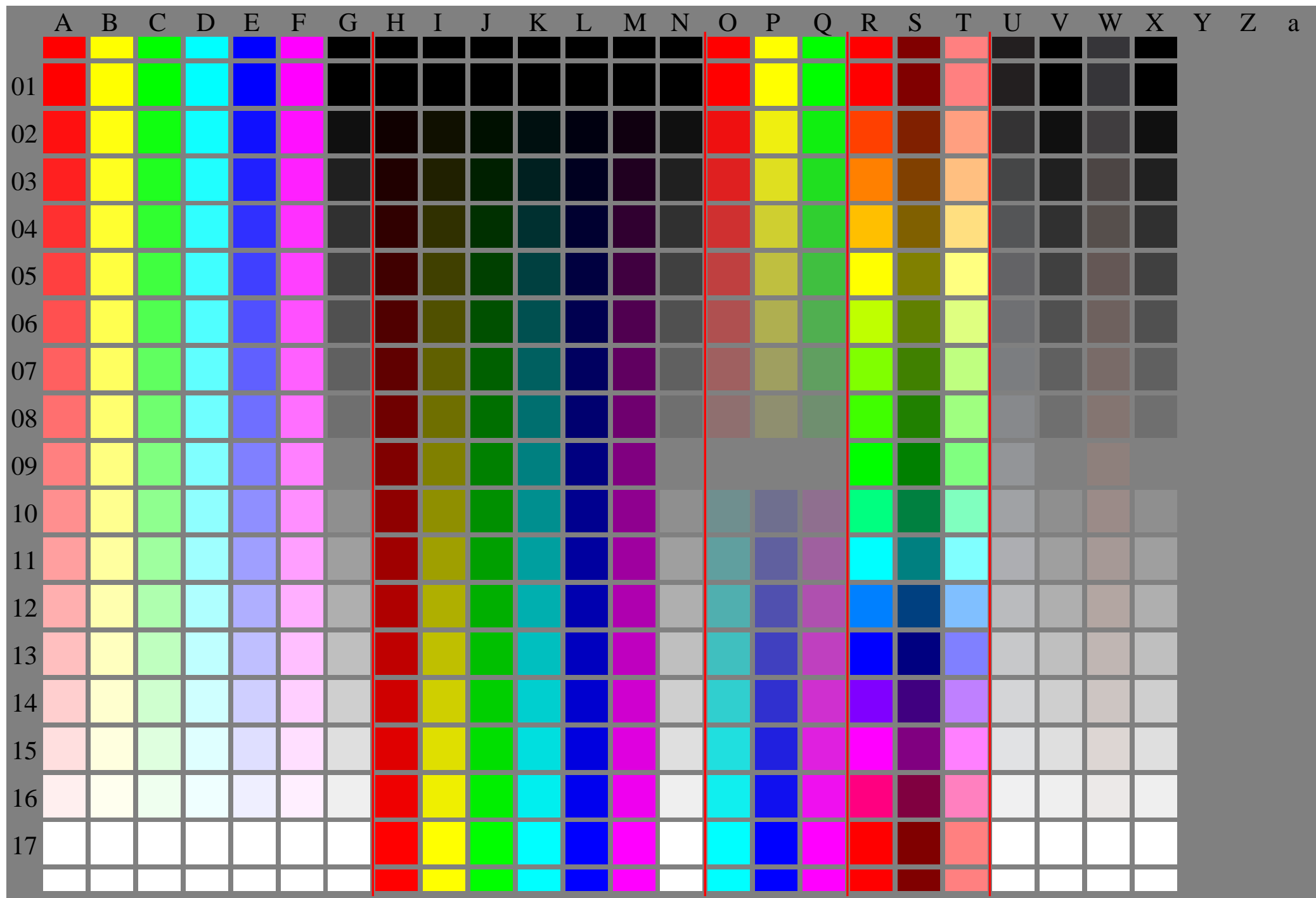
A B C D E F G H I J K L M N O P Q R S T U V W X Y Z a



See similar ISO test charts: <http://www.ps.bam.de/24705TE>, <http://www.ps.bam.de/9241E>
Technical information: <http://www.ps.bam.de/33872E> Version 2.1, io=1,1

TUB registration: 20110801-OE80/OE80L0NA.TXT /.PS
application for output of displays: monitor systems or data projector systems
TUB material: code=rh4ta





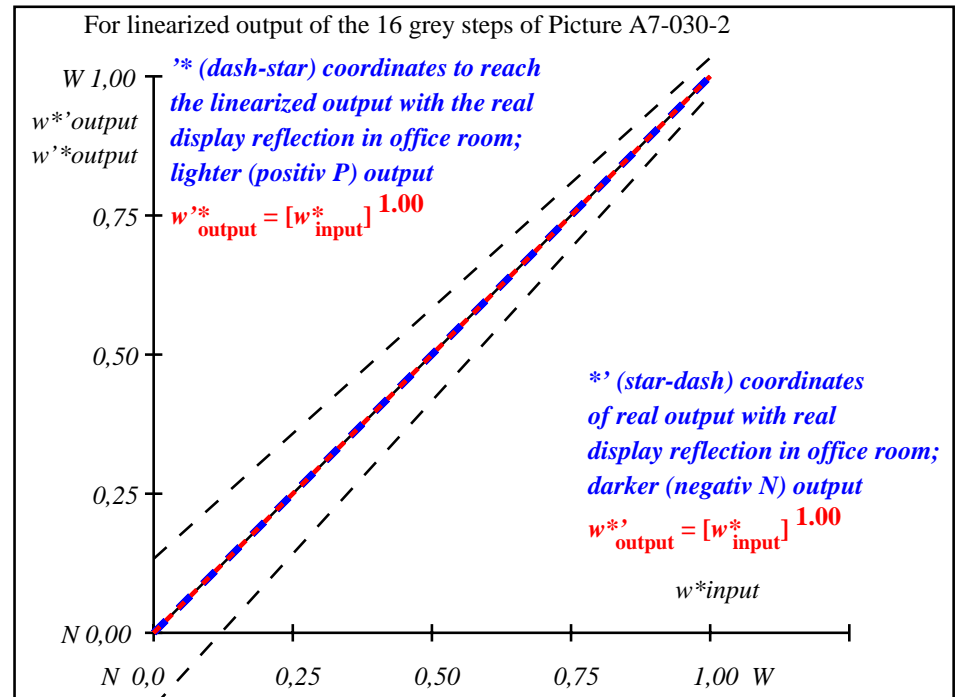
See similar ISO test charts: <http://www.ps.bam.de/24705TE>, <http://www.ps.bam.de/9241E>
 Technical information: <http://www.ps.bam.de/33872E> Version 2.1, io=1,1

TUB registration: 20110801-OE80/OE80L0NA.TXT /.PS
 application for output of displays: monitor systems or data projector systems
 TUB material: code=rhadata

i	LAB*ref	l*out	LAB*out	LAB*out/c-ref	ΔE^*	Start output S1
1	0.0	0.0	0.0	0.0	0.0	Specification according to ISO/IEC 15775 Annex G and DIN 33866-1 Annex G
2	6.36	0.0	0.07	6.36	0.0	
3	12.72	0.0	0.13	12.72	0.0	
4	19.08	0.0	0.2	19.08	0.0	
5	25.44	0.0	0.27	25.44	0.0	
6	31.8	0.0	0.33	31.8	0.0	
7	38.16	0.0	0.4	38.16	0.0	
8	44.52	0.0	0.47	44.52	0.0	
9	50.89	0.0	0.53	50.89	0.0	
10	57.25	0.0	0.6	57.25	0.0	
11	63.61	0.0	0.67	63.61	0.0	
12	69.97	0.0	0.73	69.97	0.0	
13	76.33	0.0	0.8	76.33	0.0	
14	82.69	0.0	0.87	82.69	0.0	
15	89.05	0.0	0.93	89.05	0.0	Mean lightness difference (16 steps)
16	95.41	0.0	1.0	95.41	0.0	$\Delta E^*_{CIELAB} = 0.0$
17	0.0	0.0	0.0	0.0	0.0	
18	23.85	0.0	0.25	23.85	0.0	
19	47.71	0.0	0.5	47.71	0.0	
20	71.56	0.0	0.75	71.56	0.0	Mean lightness difference (5 steps)
21	95.41	0.0	1.0	95.41	0.0	$\Delta L^*_{CIELAB} = 0.0$

Mean colour reproduction index: $R^*_{ab,m} = 100$

OE800-3N-030-2: File: Measure unknown; Device: Device unknown; Date: Date unknown



OE801-3N-030-2: File: Measure unknown; Device: Device unknown; Date: Date unknown

$L^*/Y_{intended}$ (absolute)	0.0/0.0	6.4/0.7	12.7/1.5	19.1/2.8	25.4/4.6	31.8/7.0	38.2/10.2	44.5/14.2	50.9/19.2	57.2/25.2	63.6/32.3	70.0/40.7	76.3/50.4	82.7/61.6	89.0/74.3	95.4/88.6
$w^* w^* w^*$ setrgb																
gp=1.00																
No. and Hex code	00;F	01;E	02;D	03;C	04;B	05;A	06;9	07;8	08;7	09;6	10;5	11;4	12;3	13;2	14;1	15;0
$w^* = l^*_{CIELAB, r}$ (relative)																
$w^*_{intended}$	0,000	0,067	0,133	0,200	0,267	0,333	0,400	0,467	0,533	0,600	0,667	0,733	0,800	0,867	0,933	1,000
w^*_{out}	0.0	0.067	0.133	0.2	0.267	0.333	0.4	0.467	0.533	0.6	0.667	0.733	0.8	0.867	0.933	1.0

OE800-7N, Picture A7-030-2: 16 visual equidistant L^* -grey steps; PS operator: $w^* w^* w^*$ setrgbcolor

OE80: In-output relation according to ISO 9241-306; DH
 Viewing Y contrast $Y_W:Y_N=88,9:0,31$; Y_N range 0,0 to <0,46

input: $rgb (-> rgb^*_D)$ setrgbcolor
 output 030-2: no change