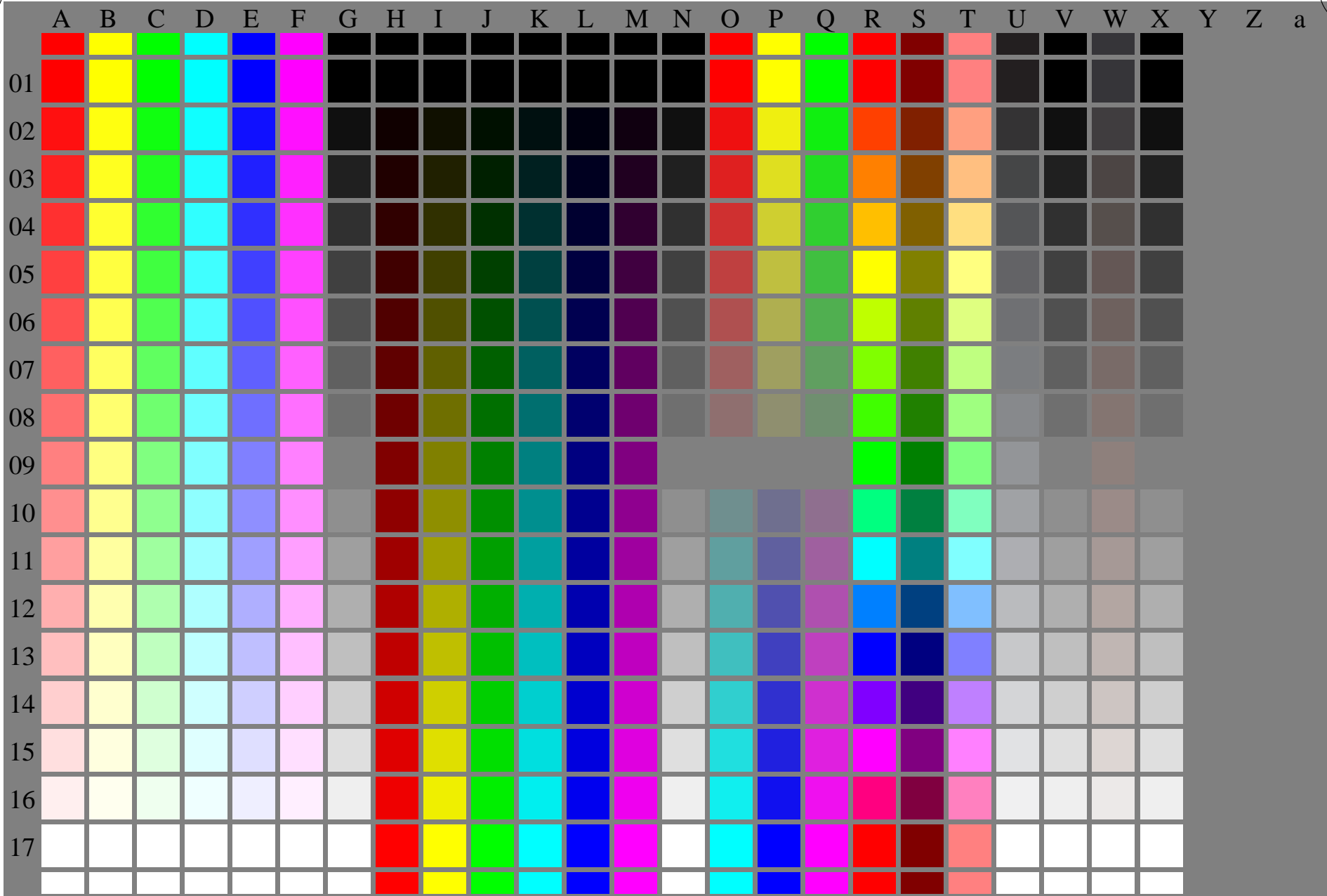


See similar ISO test charts: <http://www.ps.bam.de/24705TE>; <http://www.ps.bam.de/9241E>  
Technical information: <http://www.ps.bam.de/33872E> Version 2.1, io=1,1

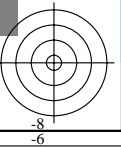
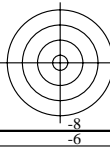
TUB registration: 20110801-OE80/OE80L0NA.TXT /.PS TUB material: code=rh4ta  
application for output of displays: monitor systems or data projector systems

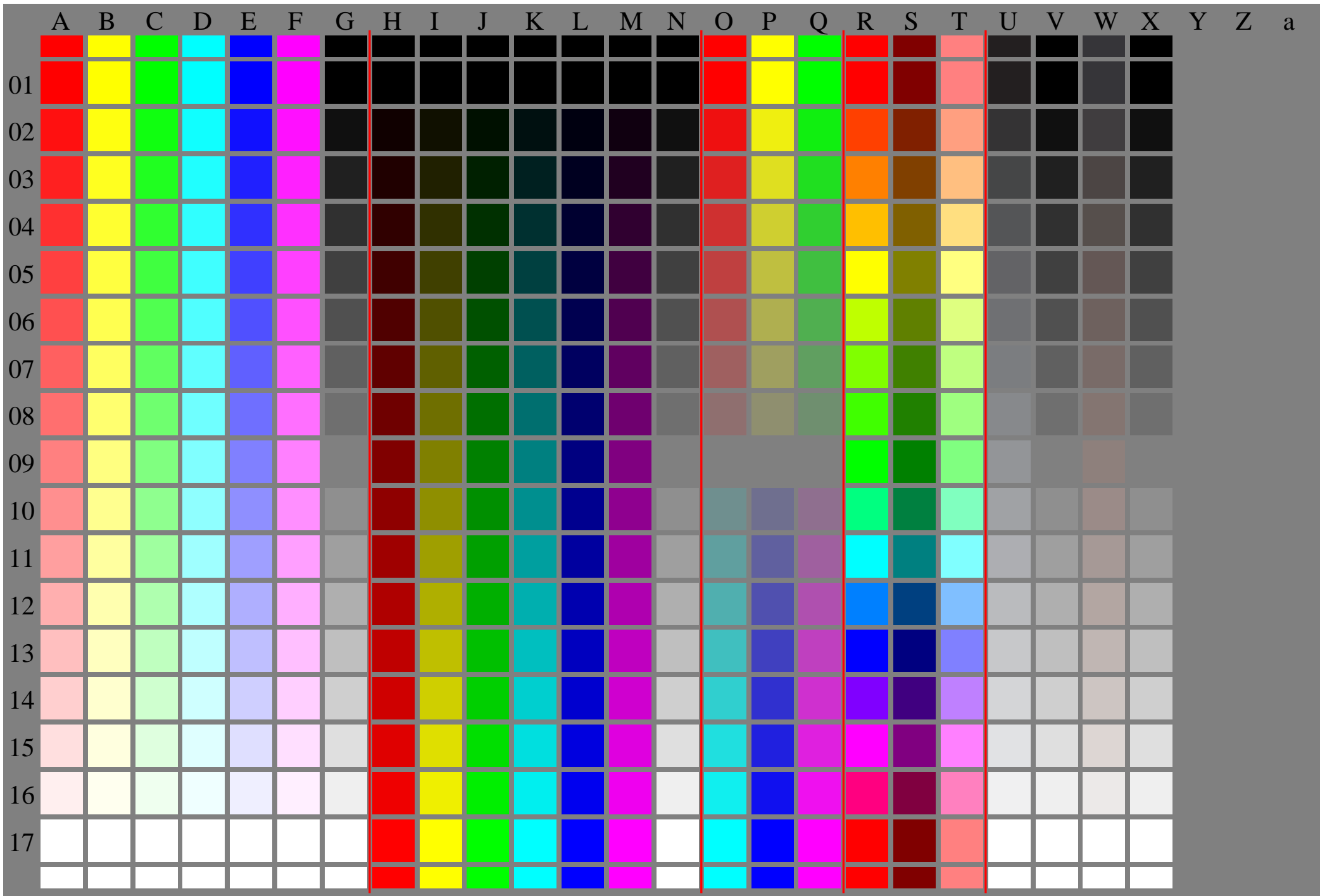


OE800-7N-030-0: Test chart with 24x17=408 colours and digital equidistant 17 step colour scales; compare ISO/IEC 15775:1999; rgb colour data, patch size and grey layout: 8mm x 8mm, 247mm x 170mm, Page 1/3

OE80: Test chart 1 according to DIN 33872-1; DH  
17 step equally spaced colours and three hue circles

input: *rgb* (->*rgb*\*<sub>d</sub>) *setrgbcolor*  
output 030-0: no change





See similar ISO test charts: <http://www.ps.bam.de/24705TE>; <http://www.ps.bam.de/9241E>  
 Technical information: <http://www.ps.bam.de/33872E> Version 2.1, io=1,1

TUB registration: 20110801-OE80/OE80L0NA.TXT /.PS  
 application for output of displays: monitor systems or data projector systems  
 TUB material: code=rh4ta

i	LAB*ref	l*out	LAB*out	LAB*out/c-ref	$\Delta E^*$
1	0.0	0.0	0.0	0.0	0.01
2	6.36	0.0	0.07	6.36	0.01
3	12.72	0.0	0.13	12.72	0.01
4	19.08	0.0	0.2	19.08	0.01
5	25.44	0.0	0.27	25.44	0.01
6	31.8	0.0	0.33	31.8	0.01
7	38.16	0.0	0.4	38.16	0.01
8	44.52	0.0	0.47	44.52	0.01
9	50.89	0.0	0.53	50.89	0.01
10	57.25	0.0	0.6	57.25	0.01
11	63.61	0.0	0.67	63.61	0.01
12	69.97	0.0	0.73	69.97	0.01
13	76.33	0.0	0.8	76.33	0.01
14	82.69	0.0	0.87	82.69	0.01
15	89.05	0.0	0.93	89.05	0.01
16	95.41	0.0	1.0	95.41	0.01
17	0.0	0.0	0.0	0.0	0.01
18	23.85	0.0	0.25	23.85	0.01
19	47.71	0.0	0.5	47.71	0.01
20	71.56	0.0	0.75	71.56	0.01
21	95.41	0.0	1.0	95.41	0.01

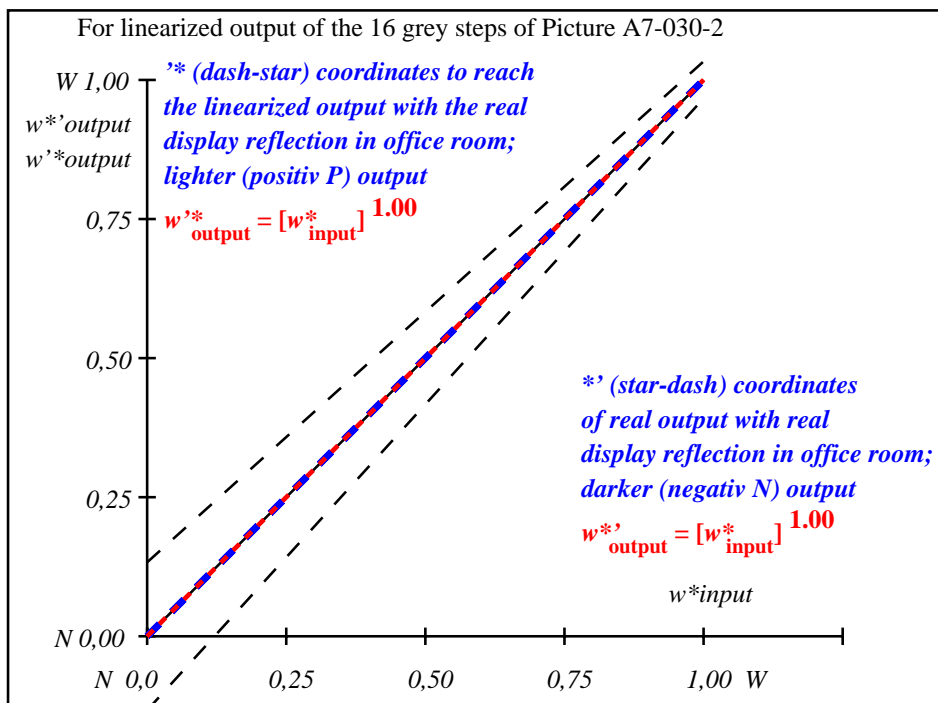
**Start output S1**  
**Specification according to ISO/IEC 15775 Annex G and DIN 33866-1 Annex G**

Mean lightness difference (16 steps)  
 $\Delta E^*_{CIELAB} = 0.0$

Mean lightness difference (5 steps)  
 $\Delta L^*_{CIELAB} = 0.0$

Mean colour reproduction index:  $R^*_{ab,m} = 100$

OE800-3N-030-2: File: Measure unknown; Device: Device unknown; Date: Date unknown



OE801-3N-030-2: File: Measure unknown; Device: Device unknown; Date: Date unknown

$L^*/Y_{intended}$ (absolute)	0.0/0.0	6.4/0.7	12.7/1.5	19.1/2.8	25.4/4.6	31.8/7.0	38.2/10.2	44.5/14.2	50.9/19.2	57.2/25.2	63.6/32.3	70.0/40.7	76.3/50.4	82.7/61.6	89.0/74.3	95.4/88.6
$w^*_{setrgb}$	00;F	01;E	02;D	03;C	04;B	05;A	06;9	07;8	08;7	09;6	10;5	11;4	12;3	13;2	14;1	15;0
$w^*_{CIELAB, r}$ (relative)	0,000	0,067	0,133	0,200	0,267	0,333	0,400	0,467	0,533	0,600	0,667	0,733	0,800	0,867	0,933	1,000
$w^*_{intended}$	0.0	0.067	0.133	0.2	0.267	0.333	0.4	0.467	0.533	0.6	0.667	0.733	0.8	0.867	0.933	1.0
$w^*_{out}$	0.0	0.067	0.133	0.2	0.267	0.333	0.4	0.467	0.533	0.6	0.667	0.733	0.8	0.867	0.933	1.0

OE800-7N, Picture A7-030-2: 16 visual equidistant  $L^*$ -grey steps; PS operator:  $w^*_{setrgbcolor}$

OE80: In-output relation according to ISO 9241-306; DH  
 Viewing  $Y$  contrast  $Y_W:Y_N=88,9:0,31$ ;  $Y_N$  range 0,0 to <0,46

input:  $rgb (->rgb^*_d)$   $setrgbcolor$   
 output 030-2: no change