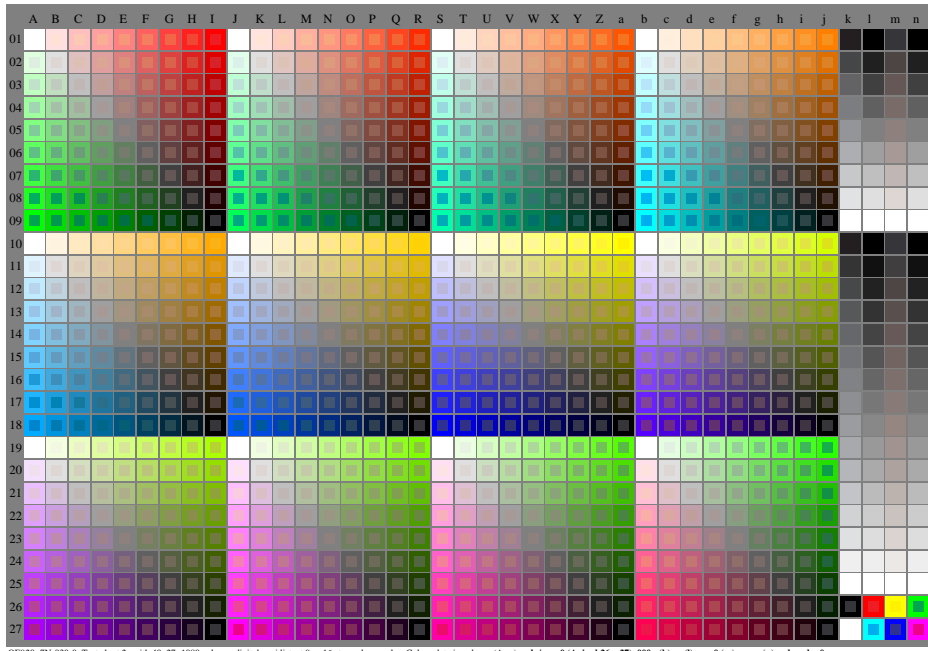


See similar ISO test charts: <http://www.ps.bam.de/24705TE>, <http://www.ps.bam.de/9241E>
Technical information: <http://www.ps.bam.de/3387ZE> Version 2.1, io=1,1



OE920-7N-030-0: Test chart 2e with 40x27=1080 colours; digital equidistant 9 or 16 step colour scales; Colour data in column (A-n): $rgb / cmy0$ (A, J + $k26_n27$), $000n$ (k), w (l), $nnn0$ (m), www (n), $colorml = 0$

OE92: Test chart 2e with 40x27=1080 colours; DH
Digital equidistant 9 or 16 step colour scales

input: $000n/w/cmy0/rgb$ ($\rightarrow rgb*_d$)
output 030-0: no change

TUB registration: 20110801-OE92/OE92L0N1.TXT /PS
application for output of displays: monitor systems or data projector systems
TUB material: code=rhata