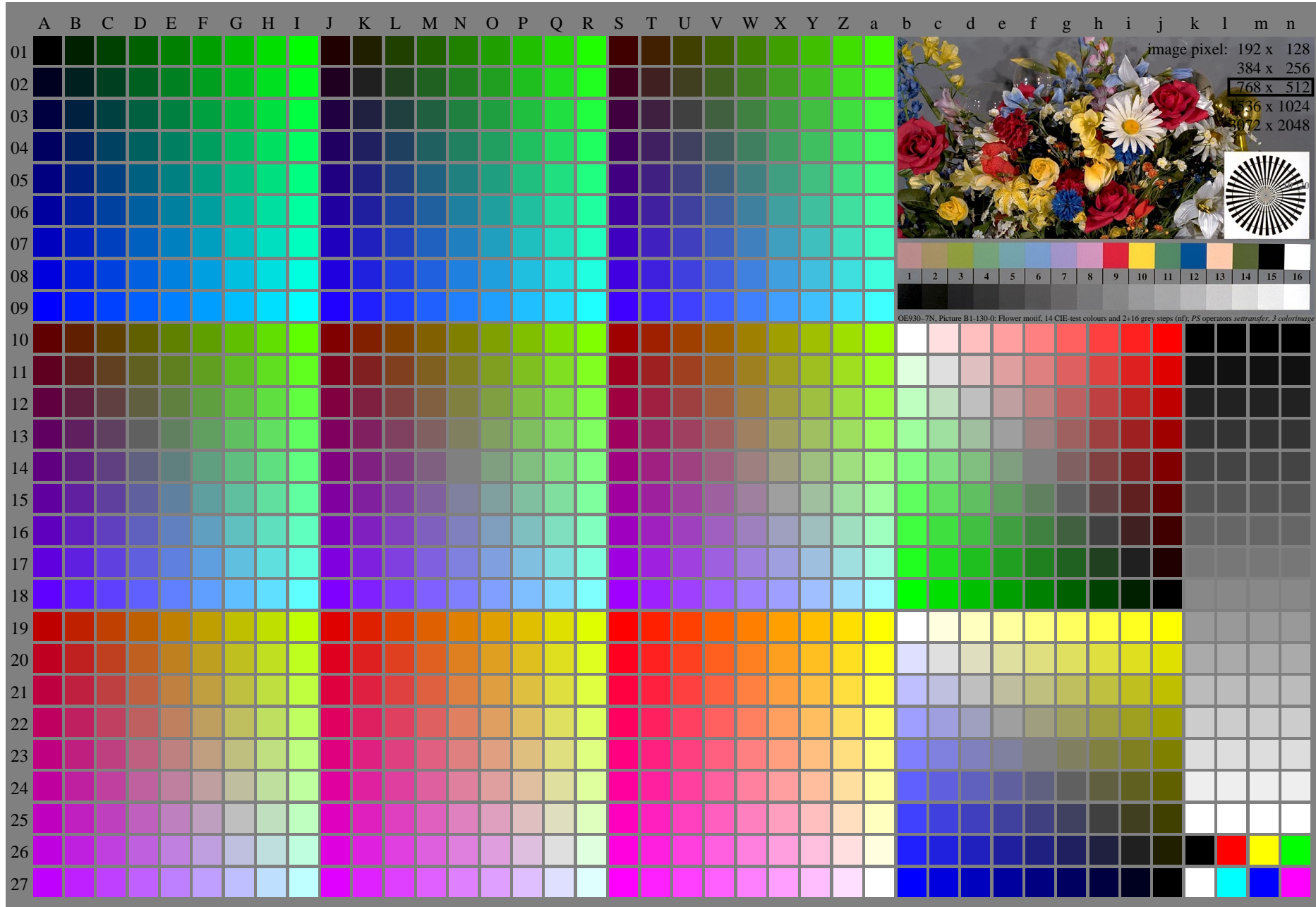


See similar ISO test charts: <http://www.ps.bam.de/24705TE>, <http://www.ps.bam.de/9241E>
Technical information: <http://www.ps.bam.de/33872E> Version 2.1, io=1,1, CIHLAB

TUB registration: 20110801-OE93/OE93L0NA.TXT /.PS
application for output of displays: monitor systems or data projector systems
TUB material: code=thada4ta



OE930-7N, Page 1/16, Test chart 2G with 40x27=1080 colours; digital equidistant 9 or 16 step colour scales; Colour data in column (A-n): $rgb^*_{i,j}$ (A_n), colorm = 1, xchart = 0, pchart = 0

OE93: Test chart 2G with 40x27=1080 colours; 1MR, DH
Digital equidistant 9 or 16 step colour scales

input: 000n/w/cmy0/rgb (->rgb*_d)
output 130-0: $g_p=1.0$; $g_N=1.0$

