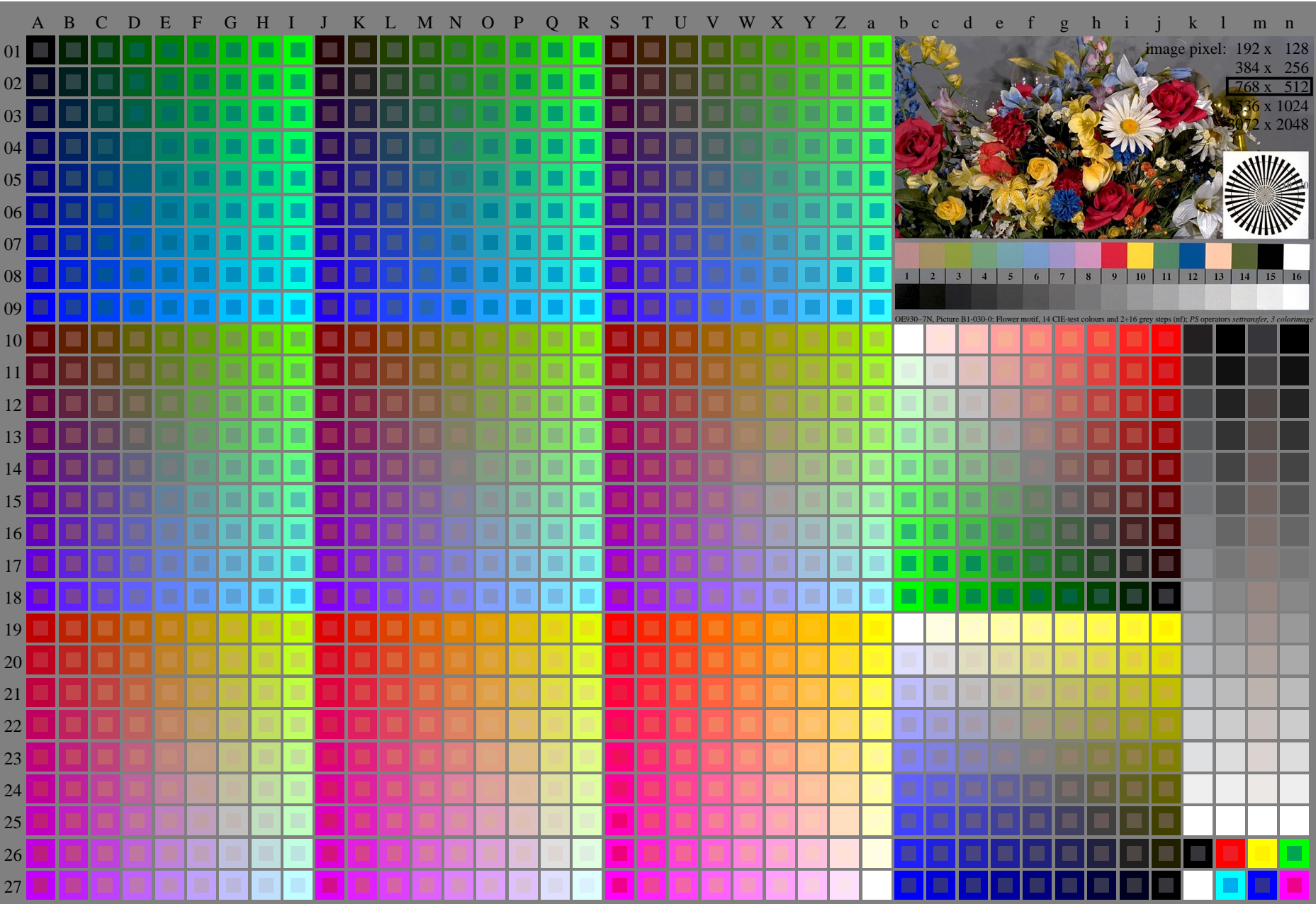


See similar ISO test charts: <http://www.ps.bam.de/24705TTE> ; <http://www.ps.bam.de/9241E>
Technical information: <http://www.ps.bam.de/33872E> Version 2.1, io=1,1



TUB registration: 20110801-OE93/OE93L1NA.TXT /.PS
application for output of displays: monitor systems or data projector systems
TUB material: code=rh4ta

OE930-7N, Page 1/16, Test chart 2G with 40x27=1080 colours; digital equidistant 9 or 16 step colour scales; Colour data in column (A-n): rgb + cmy0 (A_j + k26_n27), 000n (k), w (l), nnn0 (m), www (n), colorm = 0, xchart = 0, pchart = 0

OE93: Test chart 2G with 40x27=1080 colours; DH
Digital equidistant 9 or 16 step colour scales

input: 000n/w/cmy0/rgb (->rgb*d)
output 030-0: no change