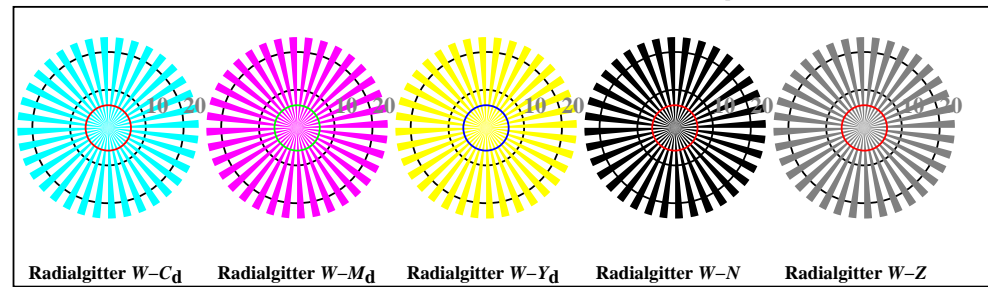
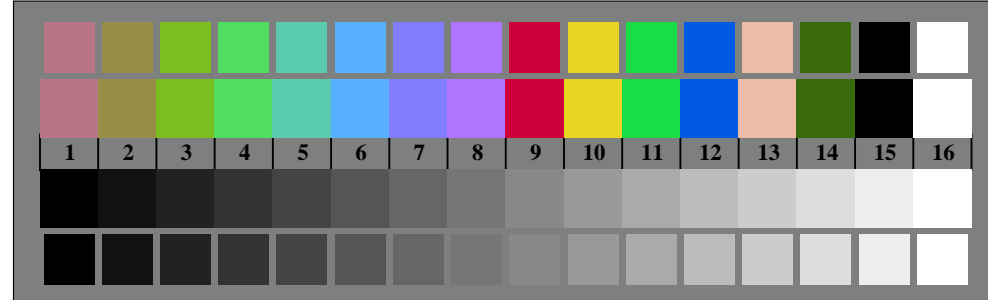




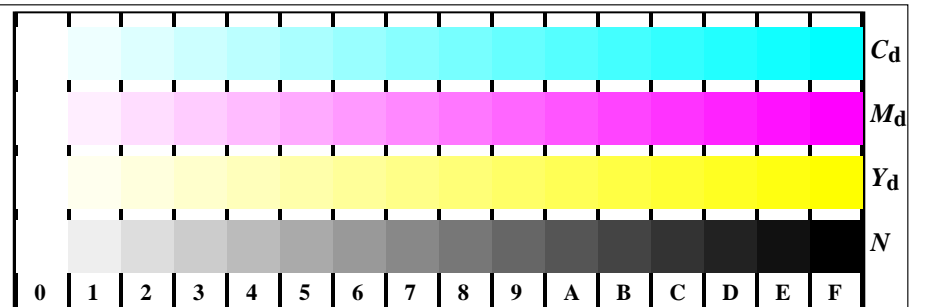
OG570-7, Bild B1-000-0: Blumenmotiv, 14 CIE-Prüffarben und 2 + 16 Graustufen (sf); PS-Operatoren settransfer, 3 colorimage



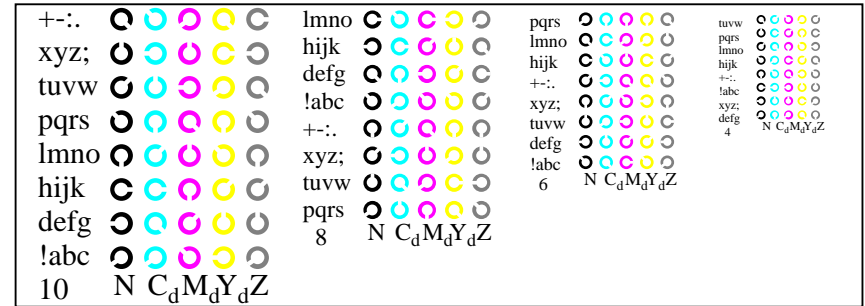
OG570-5, Bild B2W-000-0: Radialgitter W-C_d; W-M_d; W-Y_d; W-N; PS-Operator ->rgb_d setrgbcolor



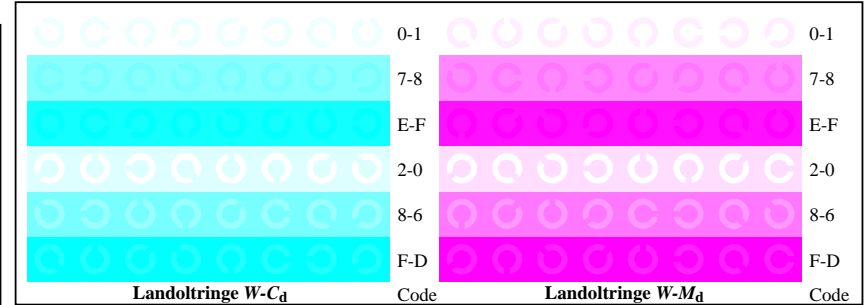
OG570-7, Bild B3W-000-0: 14 CIE-Prüffarben sowie 2 + 16 Graustufen; PS-Operator ->rgb_d setrgbcolor



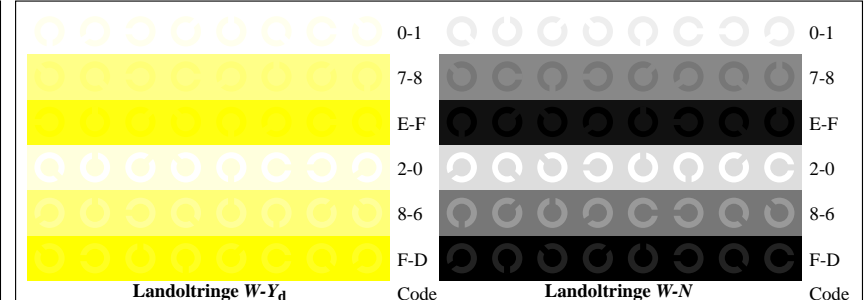
OG571-1, Bild B4W-L-000-0: 16 gleichabständige Stufen W-C_d; W-M_d; W-Y_d; W-N; PS: ->rgb_d setrgbcolor



OG571-3, Bild B5W-000-0: Schrift und Landoltringe N; C_d; M_d; Y_d; Z; PS-Operator ->rgb_d setrgbcolor



OG571-5, Bild B6W-L-000-0: Landoltringe W-C_d; W-M_d; PS-Operator ->rgb_d setrgbcolor



OG571-7, Bild B7W-L-000-0: Landoltringe W-Y_d; W-N; PS-Operator ->rgb_d setrgbcolor

$L^*/Y_{intended}$ (absolut)	0.0/0.0	6.4/0.7	12.7/1.5	19.1/2.8	25.4/4.6	31.8/7.0	38.2/10.2	44.5/14.2	50.9/19.2	57.2/25.2	63.6/32.3	70.0/40.7	76.3/50.4	82.7/61.6	89.0/74.3	95.4/88.6
$w^* w^* w^*$ <i>setrgb</i> $g_p=1.00$																
Nr. und Hex-Code	00;F	01;E	02;D	03;C	04;B	05;A	06;9	07;8	08;7	09;6	10;5	11;4	12;3	13;2	14;1	15;0
$w^*=J^*$ <i>CIELAB, r</i> (relativ)																
$w^*_{intended}$	0,000	0,067	0,133	0,200	0,267	0,333	0,400	0,467	0,533	0,600	0,667	0,733	0,800	0,867	0,933	1,000
w^*_{out}	0.0	0.067	0.133	0.2	0.267	0.333	0.4	0.467	0.533	0.6	0.667	0.733	0.8	0.867	0.933	1.0

OG570-7A, Bild A7-030-2: 16 visuell gleichabständige L^* -Graustufen; PS-Operator: $w^* w^* w^* setrgbcolor$