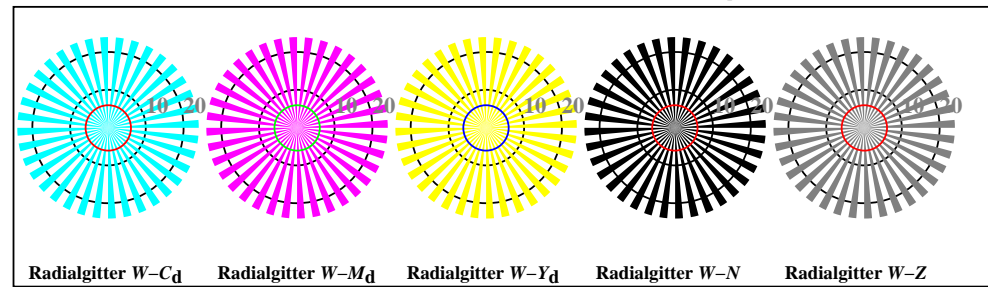
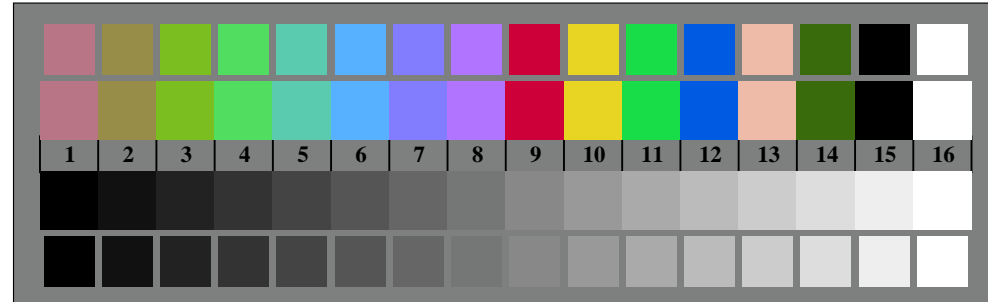




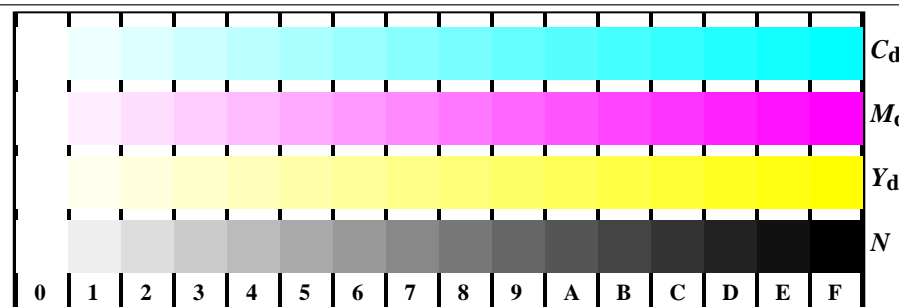
OG570-7, Bild B1-130-0: Blumenmotiv, 14 CIE-Prüffarben und 2 + 16 Graustufen (nf); PS-Operatoren *settransfer*, *3 colorimage*



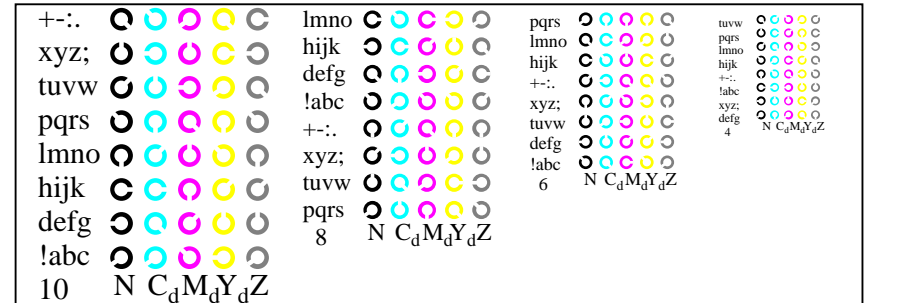
OG570-5, Bild B2W-130-0: Radialgitter $W-C_d$; $W-M_d$; $W-Y_d$; $W-N$; PS-Operator $\rightarrow rgb_d$ *setrgbcolor*



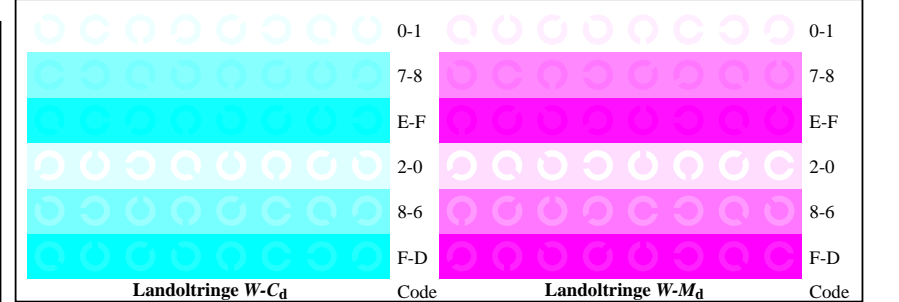
OG570-7, Bild B3W-130-0: 14 CIE-Prüffarben sowie 2 + 16 Graustufen; PS-Operator $\rightarrow rgb_d$ *setrgbcolor*



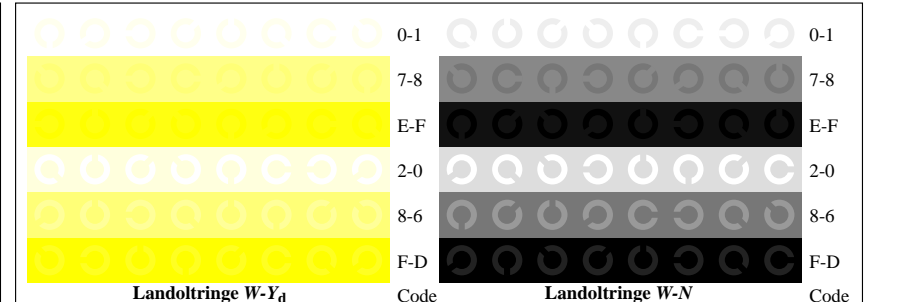
OG571-1, Bild B4W-L-130-0: 16 gleichabständige Stufen $W-C_d$; $W-M_d$; $W-Y_d$; $W-N$; PS: $\rightarrow rgb_d$ *setrgbcolor*



OG571-3, Bild B5W-130-0: Schrift und Landoltringe N ; C_d ; M_d ; Y_d ; Z ; PS-Operator $\rightarrow rgb_d$ *setrgbcolor*



OG571-5, Bild B6W-L-130-0: Landoltringe $W-C_d$; $W-M_d$; PS-Operator $\rightarrow rgb_d$ *setrgbcolor*



OG571-7, Bild B7W-L-130-0: Landoltringe $W-Y_d$; $W-N$; PS-Operator $\rightarrow rgb_d$ *setrgbcolor*