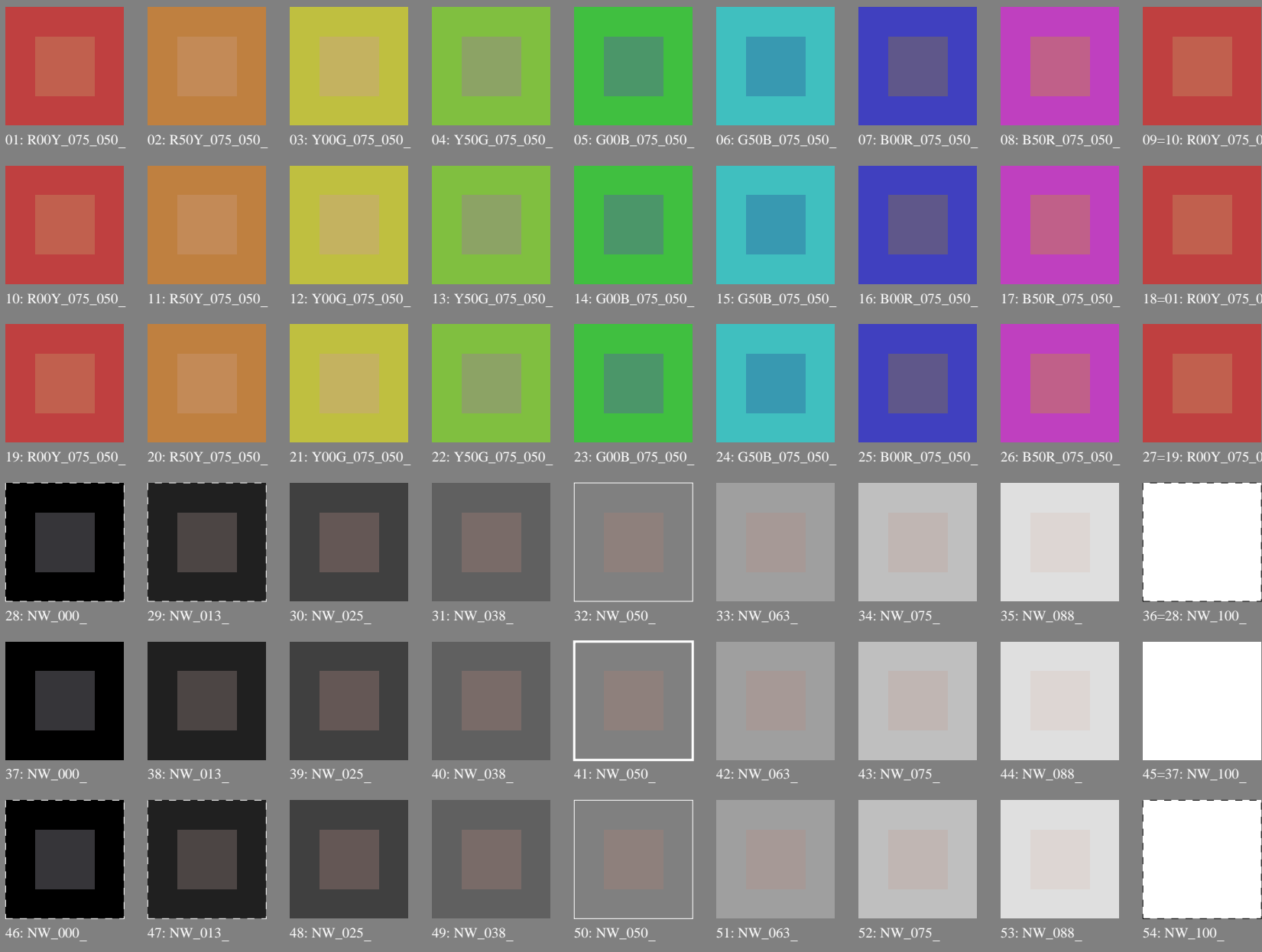


Test chart 2 for color rendering: metameric colours D65 and D50; offset print (CMYK)



Series:
metameric
m
D65

central
z
D65/D50

metameric
m
D50

metameric
m
D65

grey
g
D65/D50

metameric
m
D50

see similar files: <http://130.149.60.45/~farbmetrik/PE23/PE23.HTM>
technical information: <http://www.ps.bam.de> or <http://130.149.60.45/~farbmetrik>

TUB registration: 20130201-PE23/PE23L0NA.TXT /.PS
application for measurement of offset print output

TUB material: code=rh4ta

Test chart 2 for color rendering: metameric colours D65 and D50; offset print (CMYK); rgb->rgb_d

see similar files: http://130.149.60.45/~farbmetrik/PE23/PE23.HTM
technical information: http://www.ps.bam.de or http://130.149.60.45/~farbmetrik

TUB registration: 20130201-PE23/PE23L0NA.TXT /.PS
application for measurement of offset print output, separation cmyk6 (CMYK)
TUB material: code=rh4ta



Series:
metameric
m
D65

central
z
D65/D50

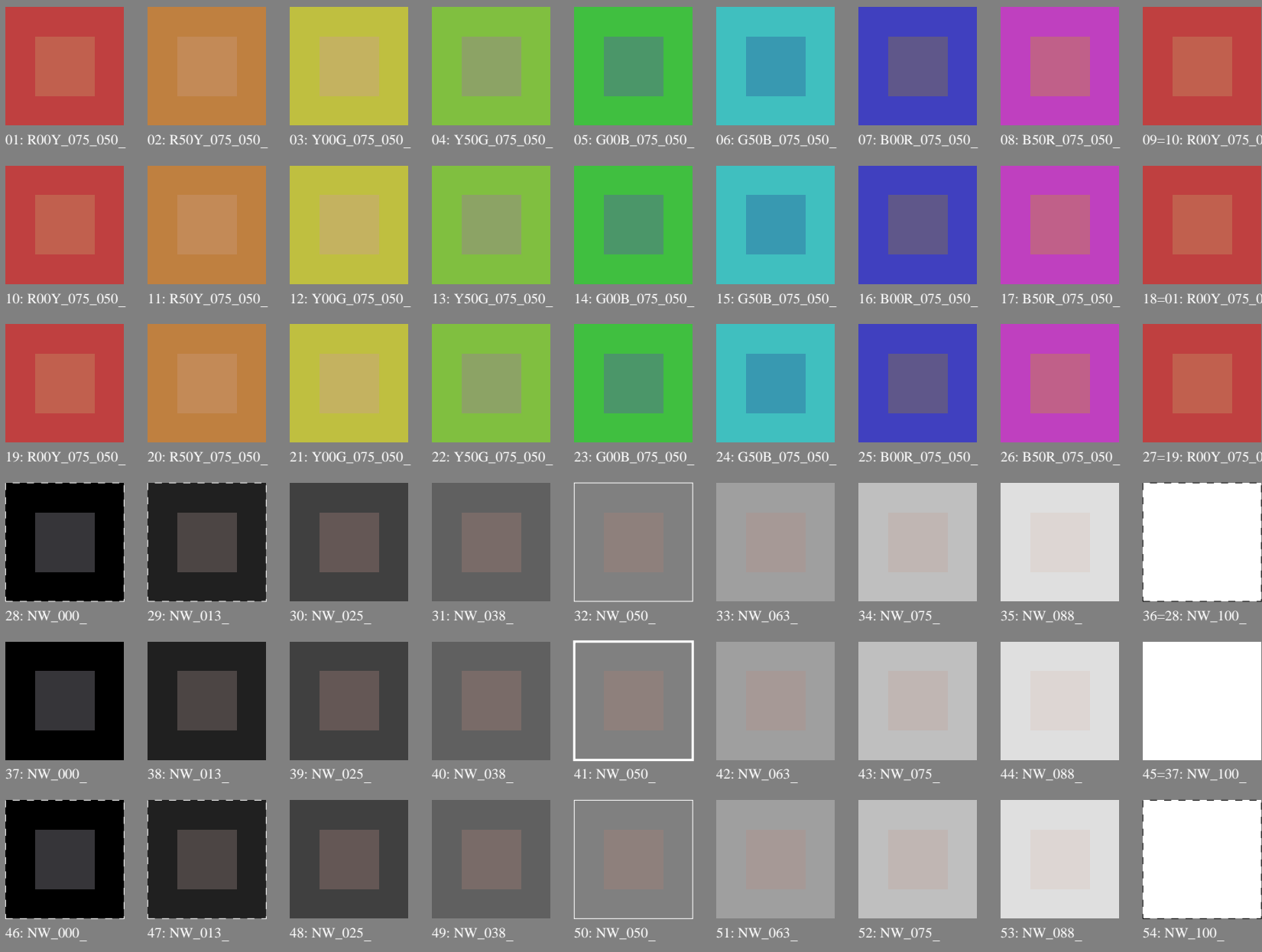
metameric
m
D50

metameric
m
D65
*Lab*N0=17.7, 0.6, 0.6*
*Lab*W0=95.4, 1.3, -4.9*
*Lab*N1=24.3, -5.6, -6.8*
*Lab*W1=95.6, 1.4, -5.0*

grey
g
D65/D50
*Lab*N0=17.7, 0.6, 0.6*
*Lab*W0=95.4, 1.3, -4.9*
*Lab*N1=17.7, 0.8, 0.6*
*Lab*W1=95.4, 0.8, -4.9*

metameric
m
D50
*Lab*N1=17.7, 0.8, 0.6*
*Lab*W1=95.4, 0.8, -4.9*
*Lab*N=24.0, -5.6, -7.3*
*Lab*W=95.5, 0.9, -5.0*

Test chart 2 for color rendering: metameric colours D65 and D50; offset print (CMYK)



Series:
metameric
m
D65

central
z
D65/D50

metameric
m
D50

metameric
m
D65

grey
g
D65/D50

metameric
m
D50

see similar files: <http://130.149.60.45/~farbmetrik/PE23/PE23.HTM>
technical information: <http://www.ps.bam.de> or <http://130.149.60.45/~farbmetrik>

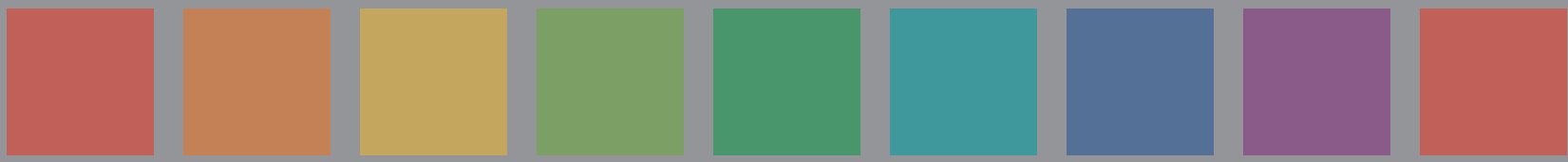
TUB registration: 20130201-PE23/PE23L0NA.TXT /.PS
application for measurement of offset print output

TUB material: code=rh4ta

Test chart 2 for color rendering: metameric colours D65 and D50; offset print (CMYK); rgb->rgbe

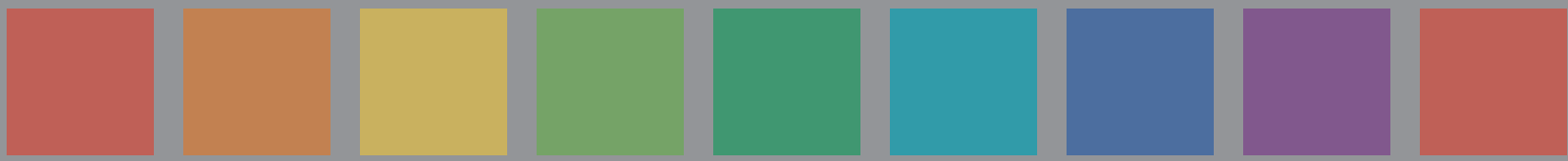
see similar files: <http://130.149.60.45/~farbmetrik/PE23/PE23.HTM>
technical information: <http://www.ps.bam.de> or <http://130.149.60.45/~farbmetrik>

TUB registration: 20130201-PE23/PE23L0NA.TXT /.PS
application for measurement of offset print output, separation cmykn6 (CMYK)
TUB material: code=rh4ta



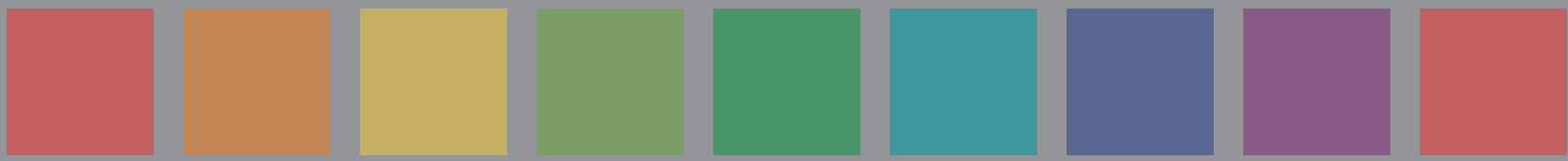
Series:
metameric
m
D65

01: R00Y_075_050_e 02: R50Y_075_050_e 03: Y00G_075_050_e 04: Y50G_075_050_e 05: G00B_075_050_e 06: G50B_075_050_e 07: B00R_075_050_e 08: B50R_075_050_e 09=10: R00Y_075_050_e



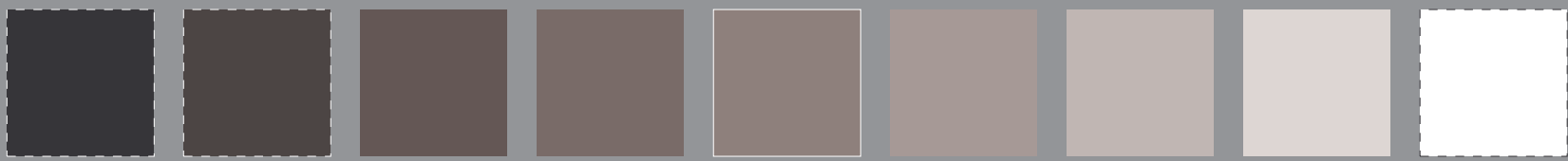
central
Z
D65/D50

10: R00Y_075_050_e 11: R50Y_075_050_e 12: Y00G_075_050_e 13: Y50G_075_050_e 14: G00B_075_050_e 15: G50B_075_050_e 16: B00R_075_050_e 17: B50R_075_050_e 18=01: R00Y_075_050_e



metameric
m
D50

19: R00Y_075_050_e 20: R50Y_075_050_e 21: Y00G_075_050_e 22: Y50G_075_050_e 23: G00B_075_050_e 24: G50B_075_050_e 25: B00R_075_050_e 26: B50R_075_050_e 27=19: R00Y_075_050_e



metameric
m
D65

Lab*N0=17.7, 0.6, 0.6
Lab*W0=95.4, 1.3, -4.9
Lab*N=24.3, -5.6, -6.8
Lab*W=95.6, 1.4, -5.0

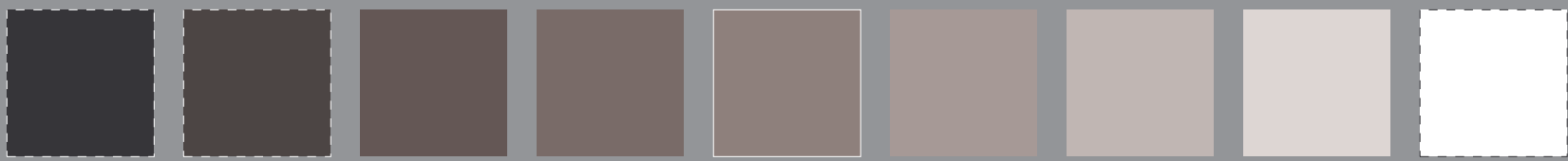
28: NW_000_e 29: NW_013_e 30: NW_025_e 31: NW_038_e 32: NW_050_e 33: NW_063_e 34: NW_075_e 35: NW_088_e 36=28: NW_100_e



grey
g
D65/D50

Lab*N0=17.7, 0.6, 0.6
Lab*W0=95.4, 1.3, -4.9
Lab*N1=17.7, 0.8, 0.6
Lab*W1=95.4, 0.8, -4.9

37: NW_000_e 38: NW_013_e 39: NW_025_e 40: NW_038_e 41: NW_050_e 42: NW_063_e 43: NW_075_e 44: NW_088_e 45=37: NW_100_e



metameric
m
D50

Lab*N1=17.7, 0.8, 0.6
Lab*W1=95.4, 0.8, -4.9
Lab*N=24.0, -5.6, -7.3
Lab*W=95.5, 0.9, -5.0

46: NW_000_e 47: NW_013_e 48: NW_025_e 49: NW_038_e 50: NW_050_e 51: NW_063_e 52: NW_075_e 53: NW_088_e 54: NW_100_e