

http://130.149.60.45/~farbmetrik/PE23/PE23L0NP.PDF /.PS; start output
N: no 3D-linearization (OL) in file (F) or PS-startup (S), page 1/2

Test chart 2 for color rendering: metameric colours D65 and D50; offset print (CMYK)

Series:
metameric
m
D65

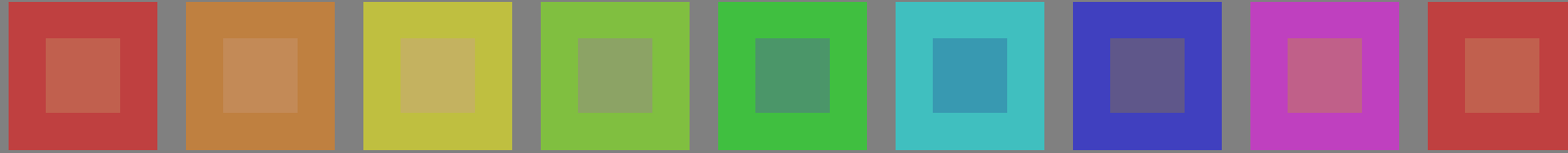
central
z
D65/D50

metameric
m
D50

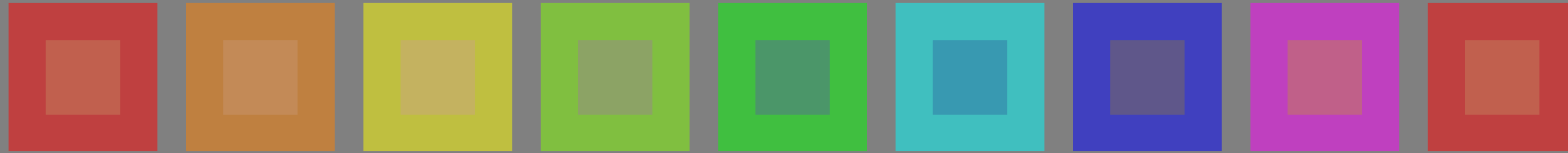
metameric
m
D65

grey
g
D65/D50

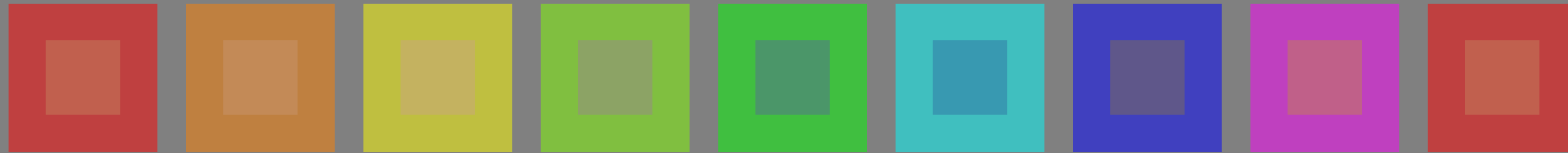
metameric
m
D50



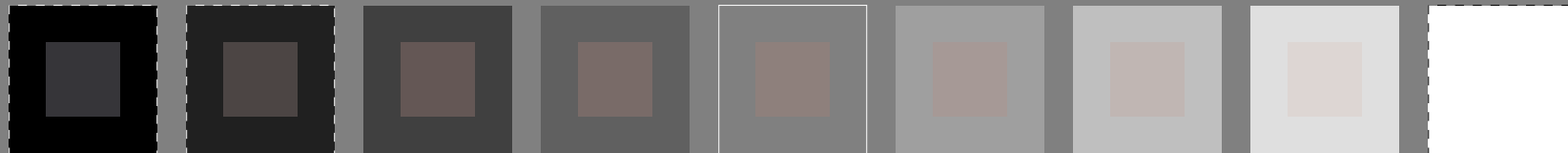
01: R00Y_075_050_ 02: R50Y_075_050_ 03: Y00G_075_050_ 04: Y50G_075_050_ 05: G00B_075_050_ 06: G50B_075_050_ 07: B00R_075_050_ 08: B50R_075_050_ 09=10: R00Y_075_050_



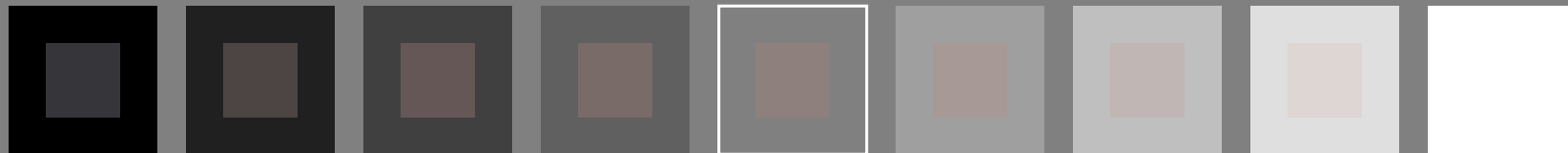
10: R00Y_075_050_ 11: R50Y_075_050_ 12: Y00G_075_050_ 13: Y50G_075_050_ 14: G00B_075_050_ 15: G50B_075_050_ 16: B00R_075_050_ 17: B50R_075_050_ 18=01: R00Y_075_050_



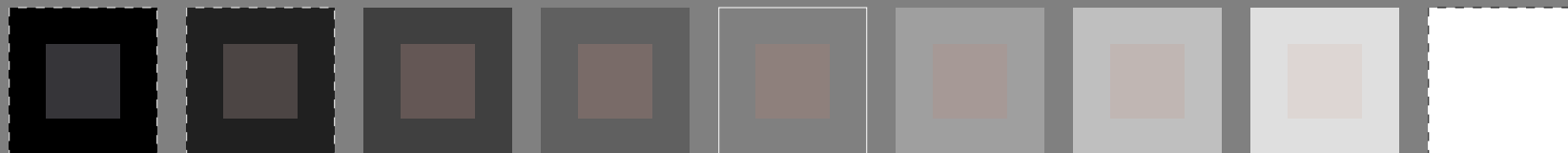
19: R00Y_075_050_ 20: R50Y_075_050_ 21: Y00G_075_050_ 22: Y50G_075_050_ 23: G00B_075_050_ 24: G50B_075_050_ 25: B00R_075_050_ 26: B50R_075_050_ 27=19: R00Y_075_050_



28: NW_000_ 29: NW_013_ 30: NW_025_ 31: NW_038_ 32: NW_050_ 33: NW_063_ 34: NW_075_ 35: NW_088_ 36=28: NW_100_



37: NW_000_ 38: NW_013_ 39: NW_025_ 40: NW_038_ 41: NW_050_ 42: NW_063_ 43: NW_075_ 44: NW_088_ 45=37: NW_100_



46: NW_000_ 47: NW_013_ 48: NW_025_ 49: NW_038_ 50: NW_050_ 51: NW_063_ 52: NW_075_ 53: NW_088_ 54: NW_100_

see similar files: <http://130.149.60.45/~farbmetrik/PE23/PE23.HTM>
technical information: <http://www.ps.bam.de> or <http://130.149.60.45/~farbmetrik>

TUB registration: 20130201-PE23/PE23L0NP.PDF /.PS
application for measurement of offset print output

TUB material: code=thata

I-003030-L0 PE230-7N

TUB-test chart PE23; colour rendering
54 colours; metameric for D65&D50; image technology

input: *rgb/cmyk* -> *rgb/cmyk*
output: no change

