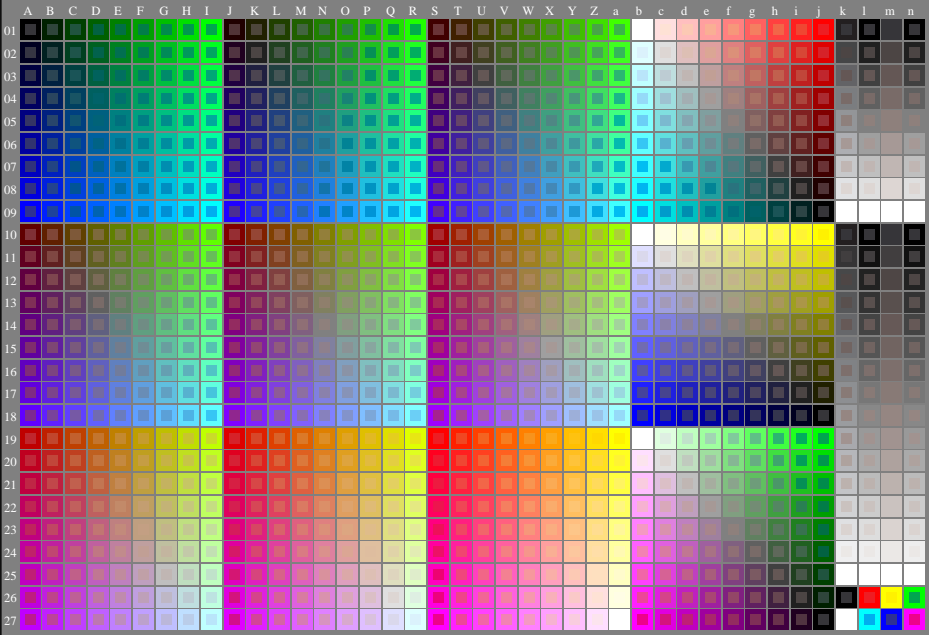


http://130.149.60.45/~farbmetrik/PE44/PE44L0N1.TXT /PS; start output
N: no 3D-linearization (OL) in file (F) or PS-startup (S), page 1/1

see similar files: <http://130.149.60.45/~farbmetrik/PE44/PE44.HTM>
technical information: <http://www.ps.bam.de> or <http://130.149.60.45/~farbmetrik>

TUB registration: 20130201-PE44/PE44L0N1.TXT /PS
application for measurement of offset print output

TUB material: code=rhata



1-003030-L0

PE440-7N

Test chart G with 1080 colours; 9 or 16 step colour scales; data in column (A-n): **rgb** (A..j+k26..n27), **000h** (k), **w** (l), **nnn0** (m), **www** (n) + **cmY0**(all)

TUB-test chart PE44; standard test chart
1080 standard colours; image technology

input: *rgb/cmyk* -> *rgb/cmyk*
output: no change

