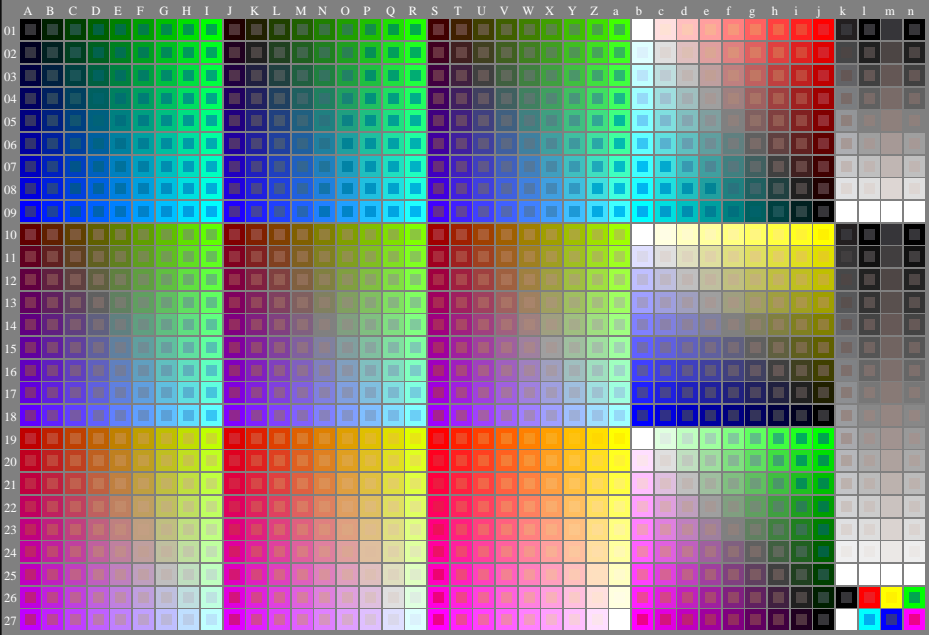


http://130.149.60.45/~farbmetrik/PE45/PE45L0N1.TXT /PS; start output  
N: no 3D-linearization (OL) in file (F) or PS-startup (S), page 1/1

see similar files: <http://130.149.60.45/~farbmetrik/PE45/PE45L0N1.TXT> /PS  
technical information: <http://www.ps.bam.de> or <http://130.149.60.45/~farbmetrik>

TUB registration: 20130201-PE45/PE45L0N1.TXT /PS  
application for measurement of offset print output

TUB material: code=rhata



1-003030-L0

PE450-7N

Test chart G with 1080 colours; 9 or 16 step colour scales; data in column (A-n):  $rgb(A_j+k26_n27)$ , 000n (k), w (l), nnn0 (m), www (n) + cny0(all)

TUB-test chart PE45; standard test chart  
1080 standard colours; image technology

input:  $rgb/cmyk \rightarrow rgb/cmyk$   
output: no change

