

Input and Output: Printer Reflective System FRS06a

Data for any device (d) or elementary (e) colour:

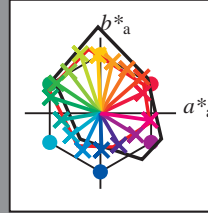
$$HIC^*_e$$

hue text for the colours of this page:

$$H^*_e = R00Y_e, R25Y_e, \dots, B75R_e$$

LRS18a; adapted (a) CIELAB data

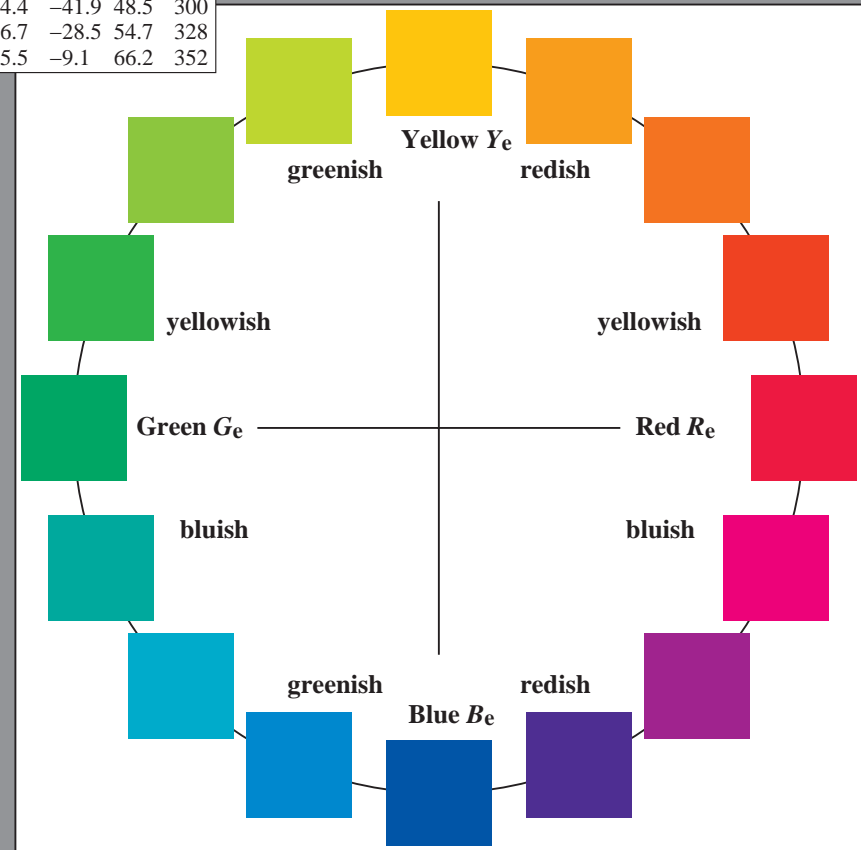
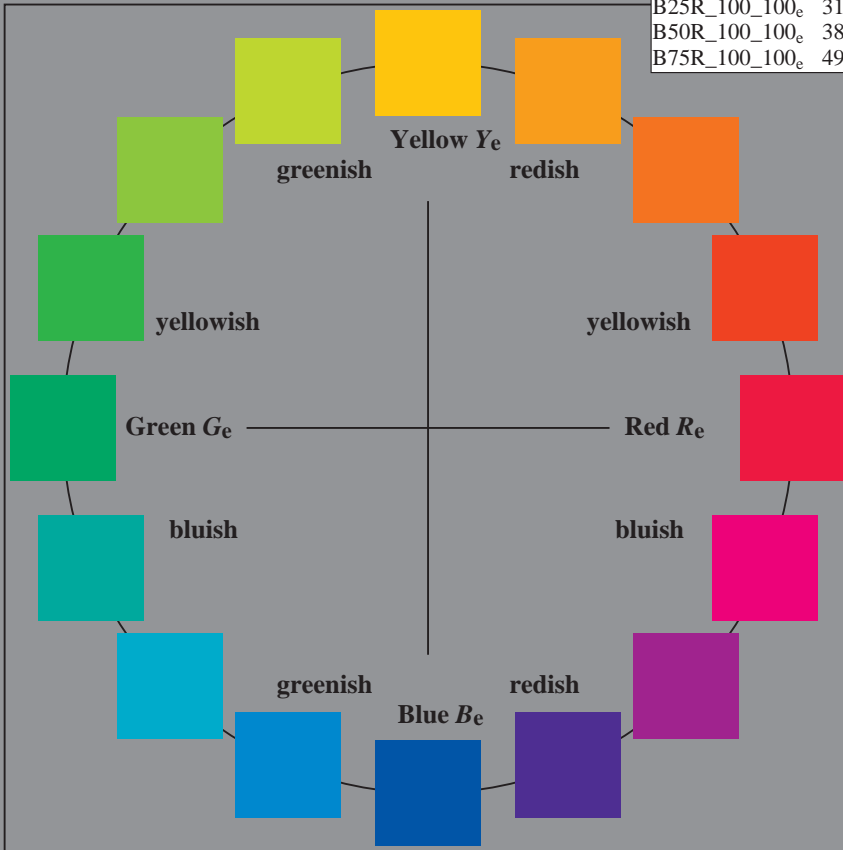
$H^*_e$	$L^*=L^*_a a^*_a$	$b^*_a$	$C^*_{ab,a}$	$h^*_{ab,a}$	
R00Y_100_100_e	47.5	56.0	26.7	62.1	25
R25Y_100_100_e	51.4	54.8	47.7	72.6	41
R50Y_100_100_e	61.8	35.2	58.4	68.2	58
R75Y_100_100_e	72.3	16.1	68.2	70.1	76
Y00G_100_100_e	83.6	-3.1	76.8	76.9	92
Y25G_100_100_e	85.8	-26.4	78.5	82.9	108
Y50G_100_100_e	71.0	-41.7	54.8	68.9	127
Y75G_100_100_e	59.9	-58.2	39.3	70.2	145
G00B_100_100_e	53.8	-65.9	21.1	69.2	162
G25B_100_100_e	55.0	-51.6	-8.7	52.3	189
G50B_100_100_e	54.9	-38.7	-29.1	48.4	216
G75B_100_100_e	51.7	-23.3	-48.6	53.9	244
B00R_100_100_e	37.3	1.4	-48.6	48.7	271
B25R_100_100_e	31.5	24.4	-41.9	48.5	300
B50R_100_100_e	38.5	46.7	-28.5	54.7	328
B75R_100_100_e	49.4	65.5	-9.1	66.2	352



%Gamut  
 $u^*_{rel} = 114$   
 %Regularity  
 $g^*_{H,rel} = 28$   
 $g^*_{C,rel} = 38$

LRS18a; adapted (a) CIELAB data

name	$L^*=L^*_a a^*_a$	$b^*_a$	$C^*_{ab,a}$	$h^*_{ab,a}$	
Re,Ma	47.5	56.0	26.7	62.1	25
Ye,Ma	83.6	-3.1	76.8	76.9	92
Ge,Ma	53.8	-65.9	21.1	69.2	162
Ce,Ma	54.9	-38.7	-29.1	48.4	216
Be,Ma	37.3	1.4	-48.6	48.7	271
Me,Ma	38.5	46.7	-28.5	54.7	328
Ne,Ma	23.8	0.0	0.0	0.0	0
We,Ma	95.8	0.0	0.0	0.0	0
Re,CIE	39.9	58.7	27.9	65.0	25
Ye,CIE	81.2	-2.8	71.5	71.6	92
Ge,CIE	52.2	-42.4	13.6	44.5	162
Be,CIE	30.5	1.4	-46.4	46.4	271



see similar files: http://130.149.60.45/~farbmetrik/PE89/PE89.HTM  
technical information: http://www.ps.bam.de or http://130.149.60.45/~farbmetrik

TUB registration: 20150701-PE89/PE89L0NP.PDF /.PS  
application for measurement of laser printer output, separation cmyk6 (CMYK)  
TUB material: code=rhadata

1-013130-L0 PE890-71

TUB-test chart PE89; 16 step hue circle  
Test chart according to DIN 33872, 3D=0, de=1, cmyk

input:  $rgb/cmyk \rightarrow rgb_e$   
output: transfer to  $cmyk_e$

1-013130-F0